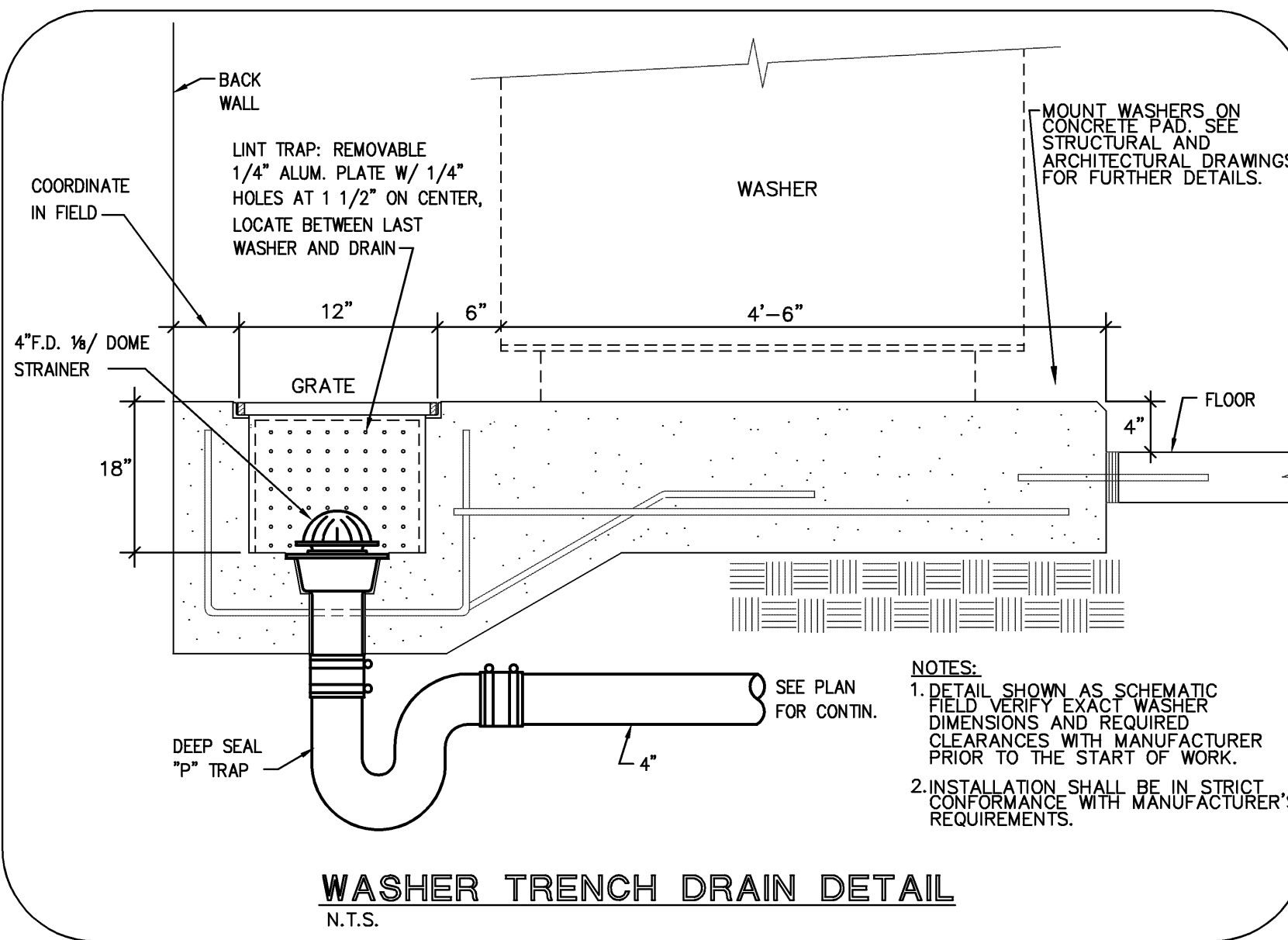
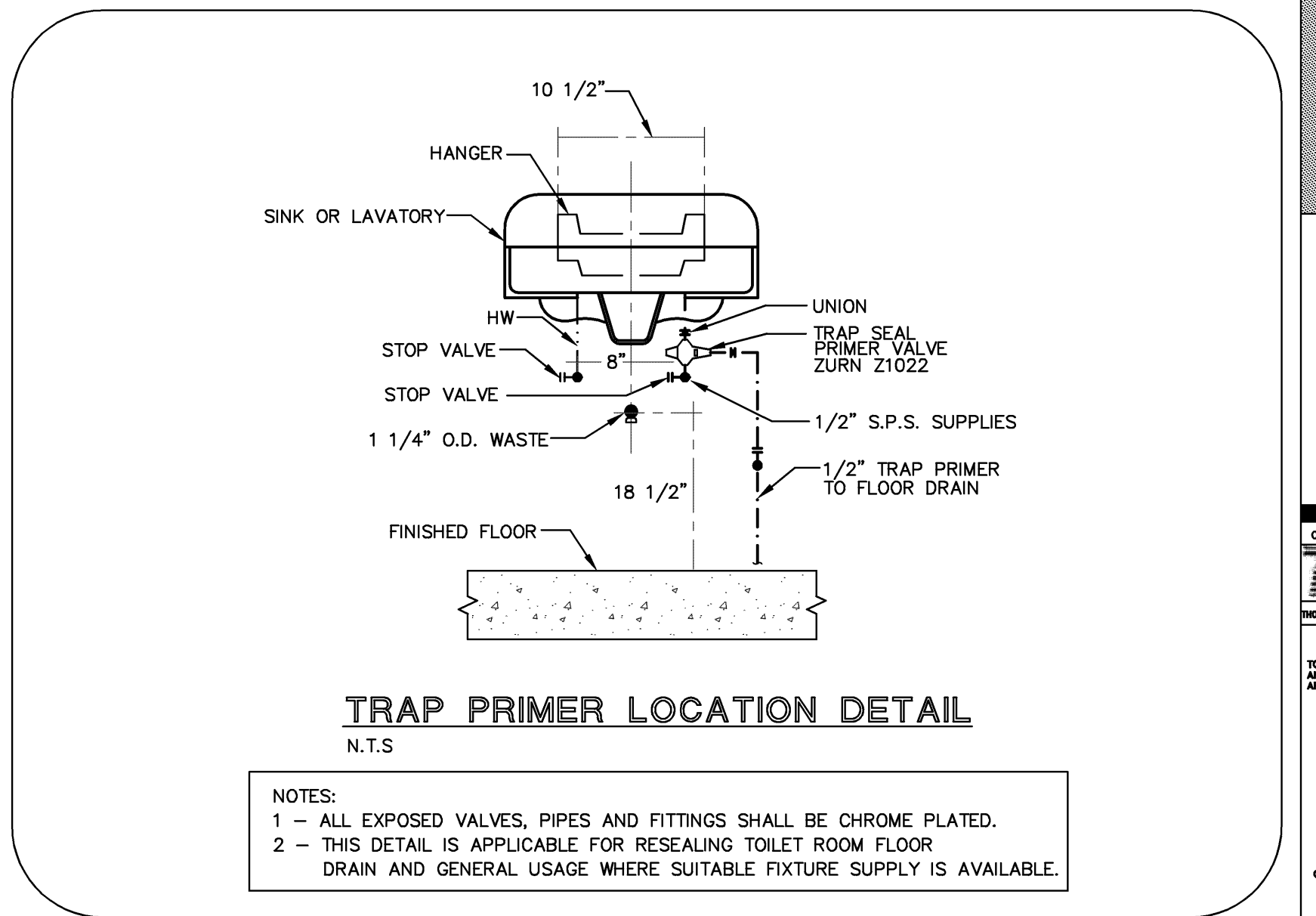


CONDENSATE P-TRAP DETAIL
N.T.S.

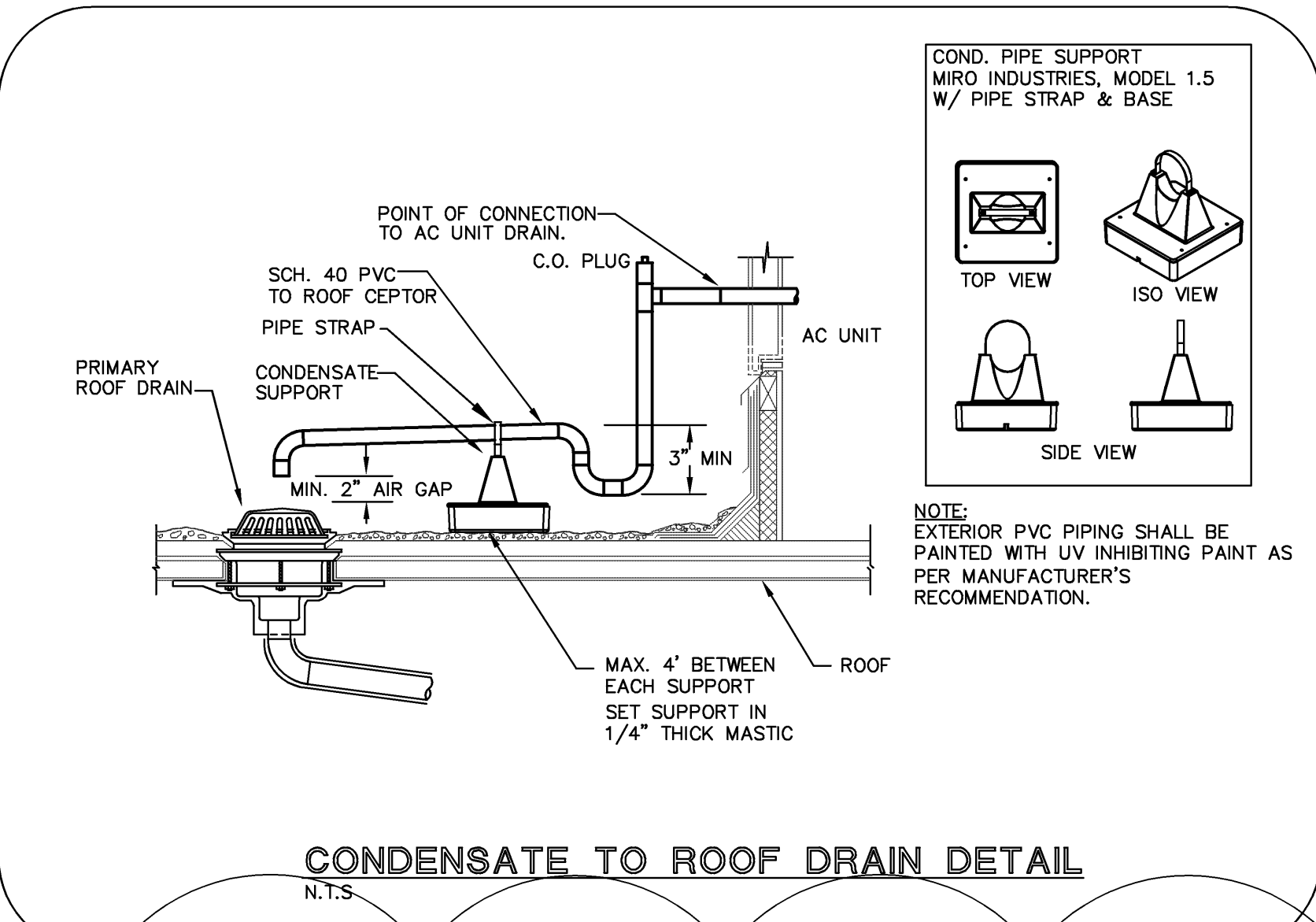


WASHER TRENCH DRAIN DETAIL
N.T.S.

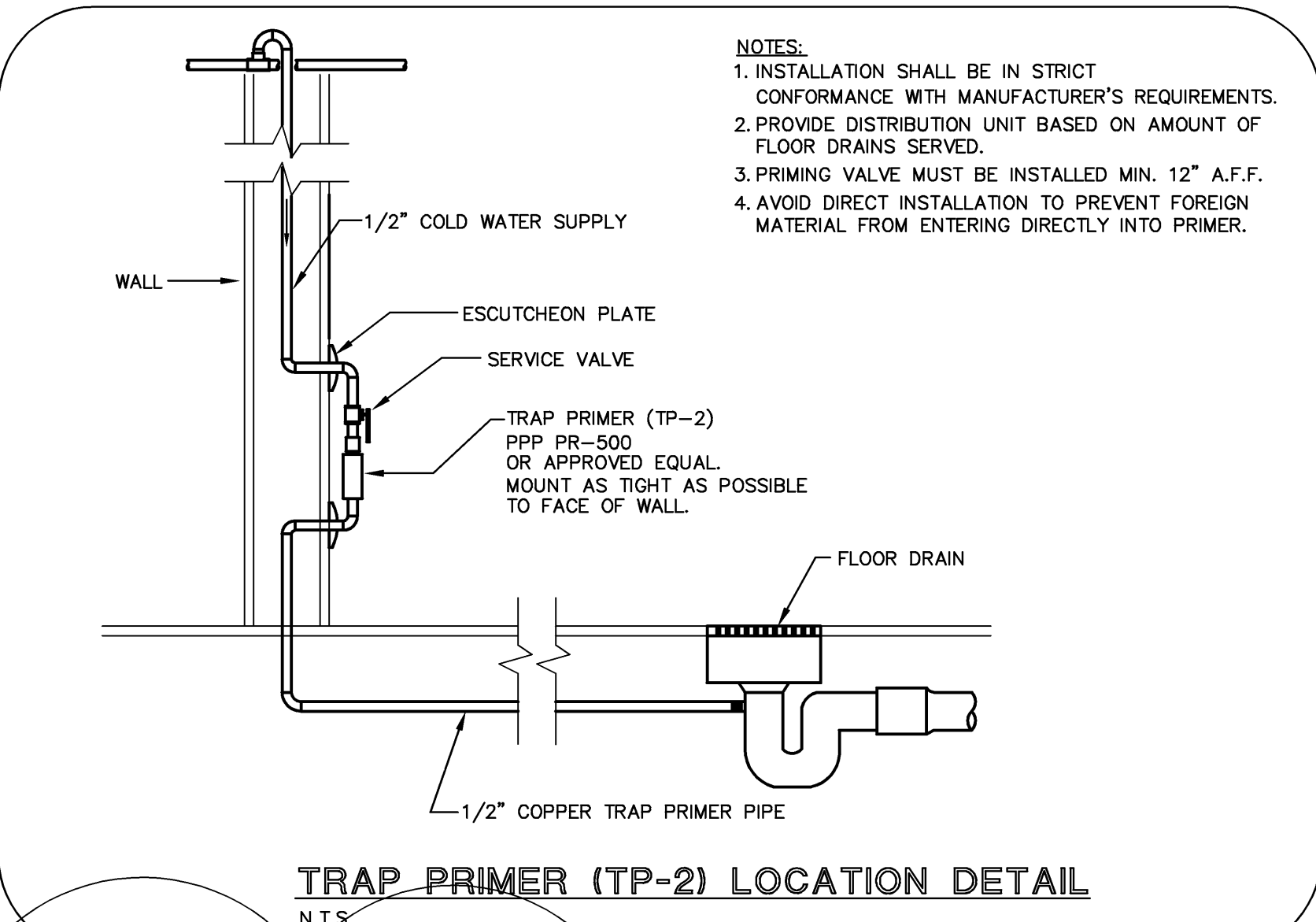


TRAP PRIMER LOCATION DETAIL
N.T.S.

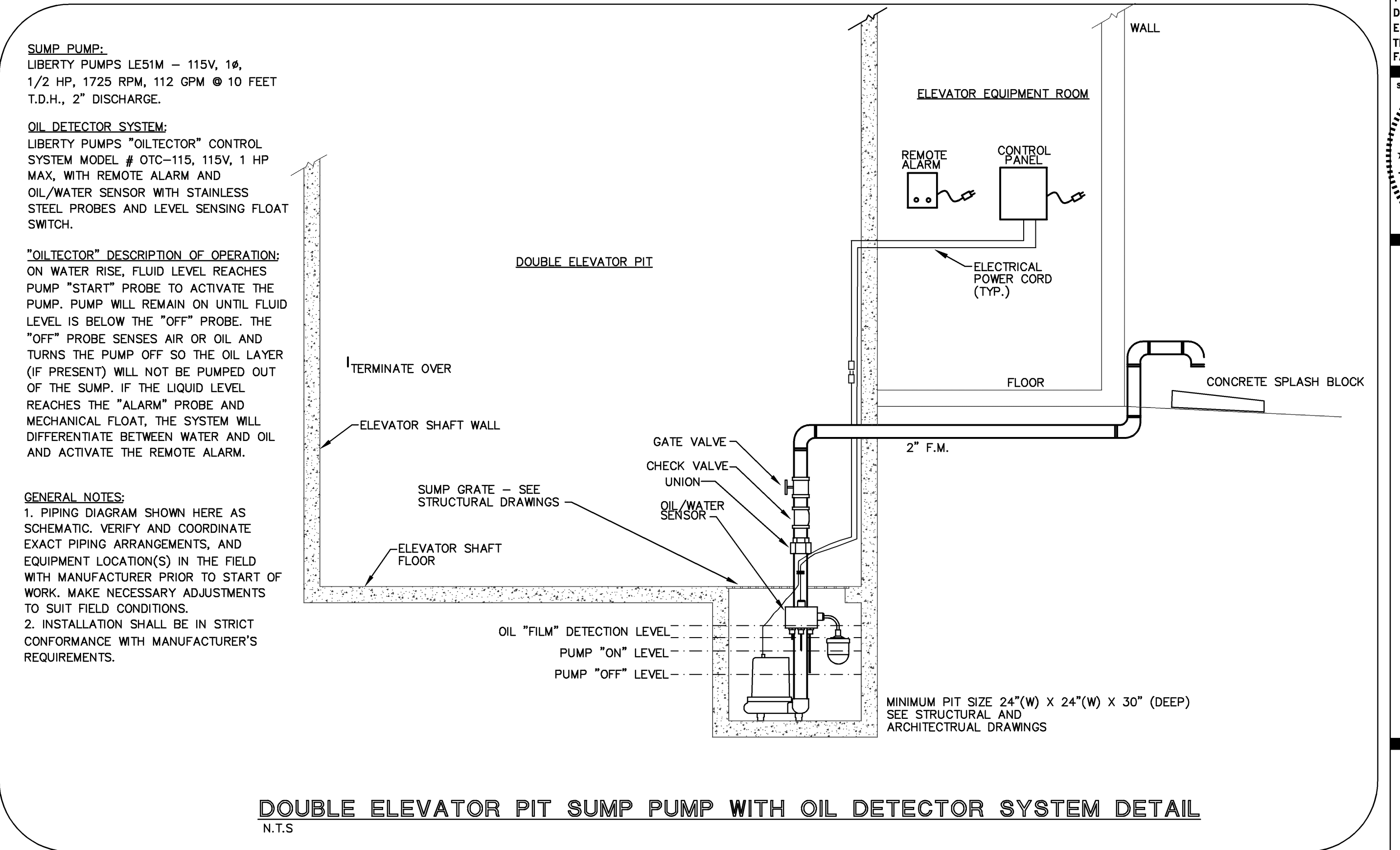
NOTES:
1 - ALL EXPOSED VALVES, PIPES AND FITTINGS SHALL BE CHROME PLATED.
2 - THIS DETAIL IS APPLICABLE FOR RESEALING TOILET ROOM FLOOR DRAIN AND GENERAL USAGE WHERE SUITABLE FIXTURE SUPPLY IS AVAILABLE.



CONDENSATE TO ROOF DRAIN DETAIL
N.T.S.



TRAP PRIMER (TP-2) LOCATION DETAIL
N.T.S.



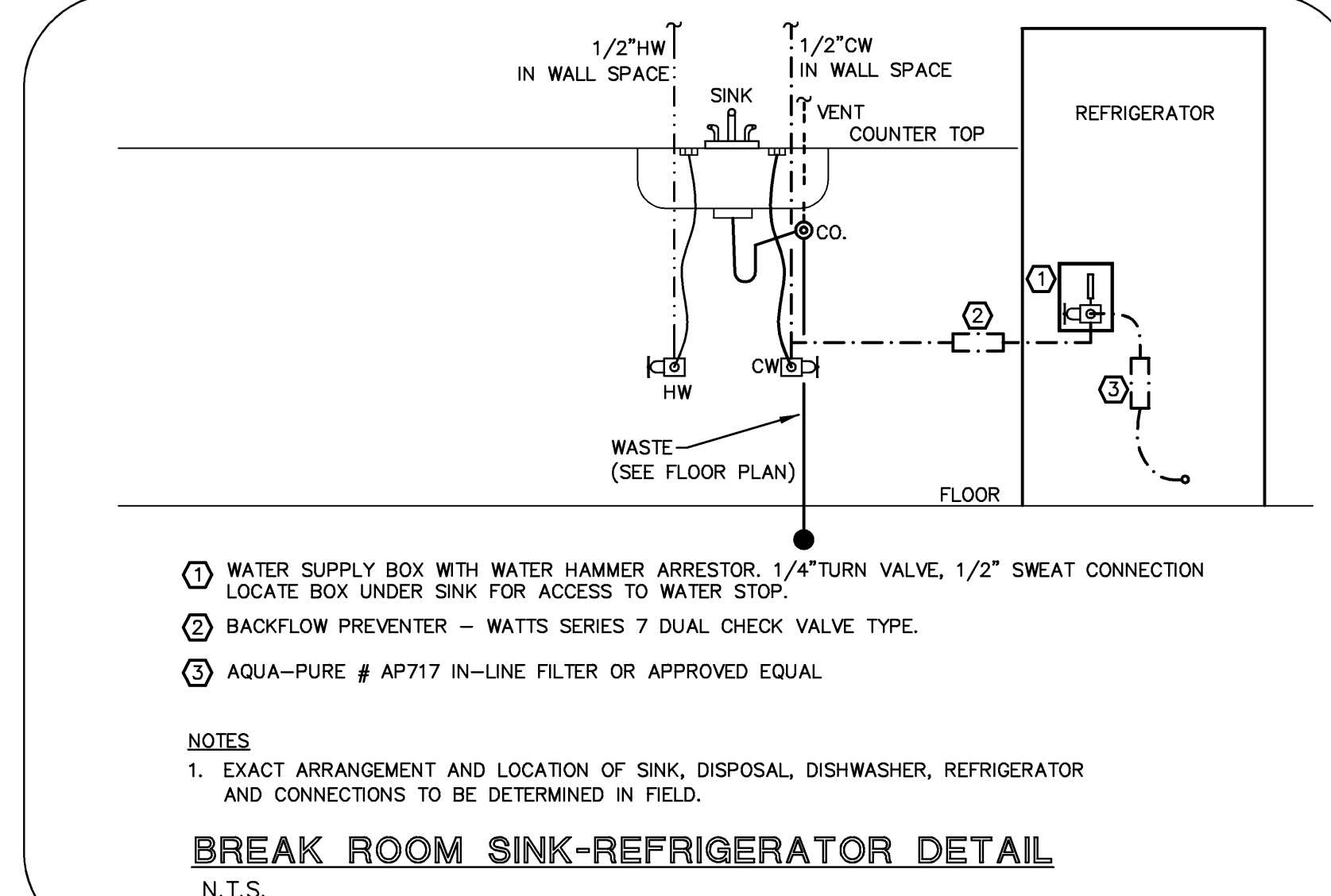
DOUBLE ELEVATOR PIT SUMP PUMP WITH OIL DETECTOR SYSTEM DETAIL
N.T.S.

SUMP PUMP:
LIBERTY PUMPS LES1M - 115V, 1 ϕ , 1/2 HP, 1725 RPM, 112 GPM @ 10 FEET T.D.H., 2" DISCHARGE.

OIL DETECTOR SYSTEM:
LIBERTY PUMPS "OILTECTOR" CONTROL SYSTEM MODEL # OTC-115, 115V, 1 HP MAX, WITH REMOTE ALARM AND OIL/WATER SENSOR WITH STAINLESS STEEL PROBES AND LEVEL SENSING FLOAT SWITCH.

"OILTECTOR" DESCRIPTION OF OPERATION:
ON WATER RISE, FLUID LEVEL REACHES PUMP "START" PROBE TO ACTIVATE THE PUMP. PUMP WILL REMAIN ON UNTIL FLUID LEVEL IS BELOW THE "OFF" PROBE. THE "OFF" PROBE SENSES AIR OR OIL AND TURNS THE PUMP OFF SO THE OIL LAYER (IF PRESENT) WILL NOT BE PUMPED OUT OF THE SUMP. IF THE LIQUID LEVEL REACHES THE "ALARM" PROBE AND MECHANICAL FLOAT, THE SYSTEM WILL DIFFERENTIATE BETWEEN WATER AND OIL AND ACTIVATE THE REMOTE ALARM.

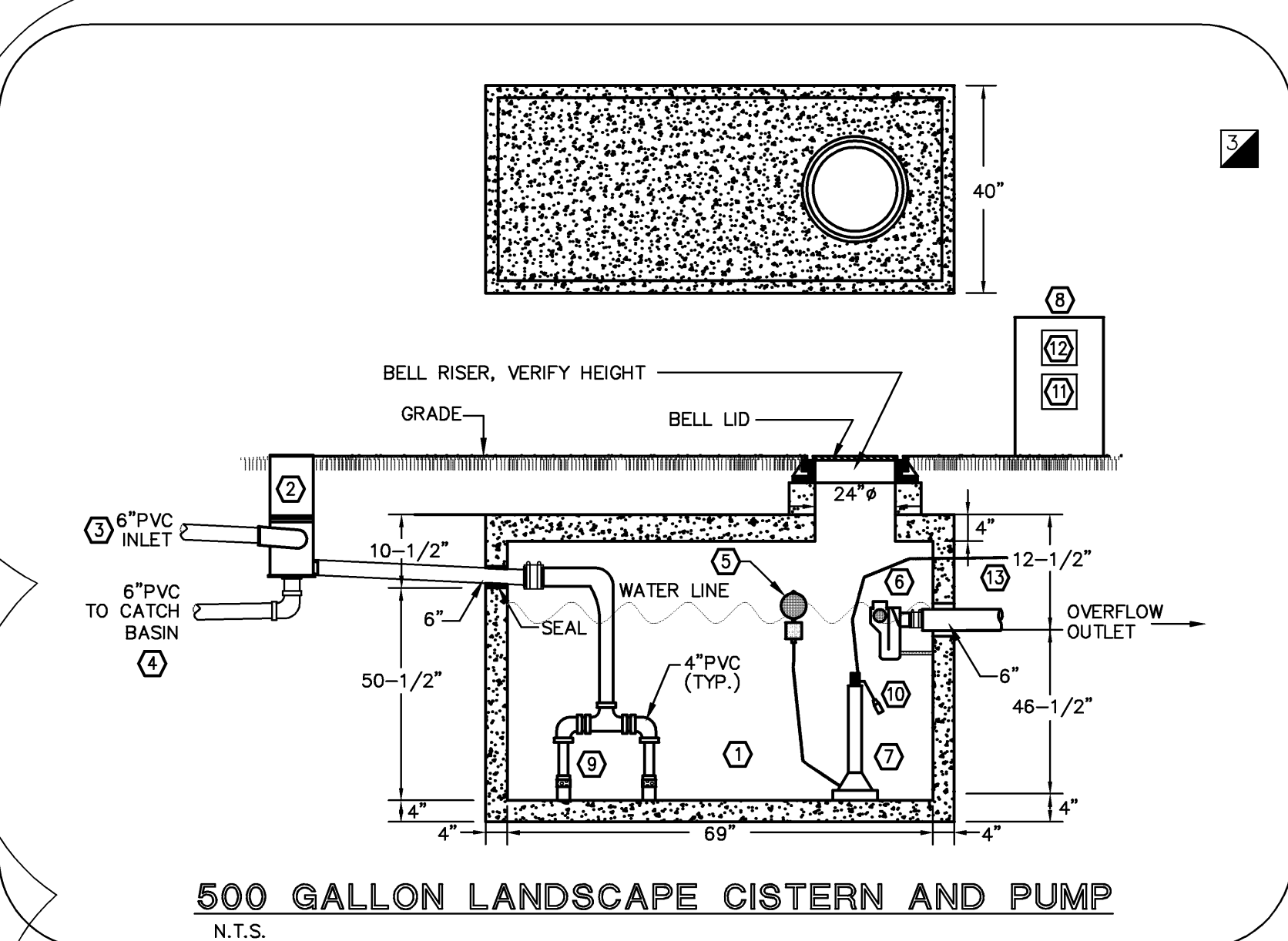
GENERAL NOTES:
1. PIPING DIAGRAM SHOWN HERE AS SCHEMATIC. VERIFY AND COORDINATE EXACT PIPING ARRANGEMENTS, AND EQUIPMENT LOCATION(S) IN THE FIELD WITH MANUFACTURER PRIOR TO START OF WORK. MAKE NECESSARY ADJUSTMENTS TO SUIT FIELD CONDITIONS.
2. INSTALLATION SHALL BE IN STRICT CONFORMANCE WITH MANUFACTURER'S REQUIREMENTS.



- 1 WATER SUPPLY BOX WITH WATER HAMMER ARRESTOR. 1/4" TURN VALVE, 1/2" SWEAT CONNECTION. LOCATE BOX UNDER SINK FOR ACCESS TO WATER STOP.
- 2 BACKFLOW PREVENTER - WATTS SERIES 7 DUAL CHECK VALVE TYPE.
- 3 AQUA-PURE # AP717 IN-LINE FILTER OR APPROVED EQUAL.

NOTES:
1. EXACT ARRANGEMENT AND LOCATION OF SINK, DISPOSAL, DISHWASHER, REFRIGERATOR AND CONNECTIONS TO BE DETERMINED IN FIELD.

BREAK ROOM SINK-REFRIGERATOR DETAIL
N.T.S.



500 GALLON LANDSCAPE CISTERN AND PUMP
N.T.S.

CISTERN	
1	PRECAST PUMP TANK ECB ABBERT INC. DIMENSIONS SHOWN ARE APPROXIMATE AND TO BE VERIFIED WITH TANK MANUFACTURER PRIOR TO RELEASE OF TANK ORDER. PROVIDE APPROX. 500 GALLONS OF CAPACITY. TANK SHALL MEET ALL LOCAL CODE REQUIREMENTS FOR NON-POTABLE WATER STORAGE. CONCRETE SHALL MEET 4,500 PSI IN 27 DAYS MIN.
2	MEDIUM CAPACITY VORTEX RAINWATER FINE FILTER RAINWATER MANAGEMENT SOLUTIONS PRODUCT # WFF 150 OR J.R. SMITH FIGURE #RH9520-06. ACCESSORIES: STAINLESS STEEL LIFT HANDLE. FILTER IS PROVIDED TO REMOVE DEBRIS AND DIVERT 95% OF THE CLEAN RAINWATER TO THE UNDERGROUND STORAGE TANK.
3	6" PVC STORM WATER INLET FROM LAUNDRY ROOM ROOF AND PARTIAL PORTE COCHERE. COORDINATE EXACT LOCATION, INVERT, POINT OF CONNECTION, ETC. WITH PLUMBING CONTRACTOR PRIOR TO INSTALLATION.
4	6" FILTER OVERFLOW TO CATCH BASIN
5	CISTERN TANK FLOATING FILTER AND HOSE RAINWATER MANAGEMENT SOLUTIONS PRODUCT #SAFF OR J.R. SMITH FIGURE #RH9532F. THE FLOATING FILTER IS USED TO EXTRACT AND FILTER RAINWATER OUT OF THE STORAGE TANK. THE FLOATING BALL IS MADE OF POLYETHYLENE AND THE FILTER IS MADE OF STAINLESS STEEL. FINE FILTER HOUSING WITH 0.47" MESH AND 1-1/4" NOZZLE CONNECTION.
6	MULTI-FUNCTIONAL OVERFLOW DEVICES. RAINWATER MANAGEMENT SOLUTIONS PRODUCT # US 1002 OR J.R. SMITH FIGURE #RH953000K. TOP INLET SHALL BE VISIBLE FROM 24" LID OPENING FOR MAINTENANCE PURPOSES. DEVICE ELIMINATES DRAIN ODORS IN THE TANK, PROVIDES VERMIN AND BACKFLOW PROTECTION AND SKIMS SURFACE DEBRIS. Gould 1.25HP SUBMERSIBLE PUMP, HEAVY-DUTY, HIGH PERFORMANCE 115V/60Hz, 3-STAGE SUBMERSIBLE PUMP, 1-1/4" THREADED INLET TO ACCEPT A FLOATING EXTRACTOR. PROVIDE BASE.
7	PROVIDE MONUMENT SIGN AS PER ARCHITECTS REQUIREMENTS. BACKSIDE OF SIGN TO SERVE AS MOUNTING LOCATION FOR PUMP CONTROLLER AND TIMER. COORDINATE WITH OWNER ALL REQUIREMENTS PRIOR TO COMMENCEMENT.
8	4" SMOOTHING INLET FITTING, RAINWATER MANAGEMENT SOLUTIONS PRODUCT #EB 0300 OR J.R. SMITH FIGURE #RH9530SI. STAINLESS STEEL, SMOOTHS INLET WATER AS IT ENTERS TANK IN ORDER TO PREVENT STIRRING. A TOTAL OF TWO FITTINGS SHALL BE PROVIDED.
9	LOW WATER CUT-OFF FLOAT SWITCH.
10	RAINMASTER 115V AUTOMATIC PUMP CONTROLLER
11	PROVIDE OSHA APPROVED BILINGUAL SIGN INDICATING "NON-POTABLE WATER. DO NOT DRINK". LOCATE AS REQUIRED.
12	PROVIDE 1-1/4" RAINWATER SUPPLY TO LOCAL AREA FOR IRRIGATION.

PERMIT SET 09-27-12

NOTE

THESE DRAWINGS ARE PREPARED PER ESTABLISHED INDUSTRY STANDARDS AND REPRESENT THE ENGINEERS DESIGN CONCEPT. THEY ARE NOT INTENDED TO PROVIDE EVERY DETAIL OR CONDITION REQUIRED TO CONSTRUCT THE BUILDING. THE CONTRACTOR THROUGH SUBMITTALS AND OTHER COORDINATION EFFORTS IS FULLY RESPONSIBLE FOR PROVIDING A COMPLETE AND OPERATIONAL BUILDING WHETHER INDICATED ON THE PLANS OR NOT.

1/4" = 1'

22 P