

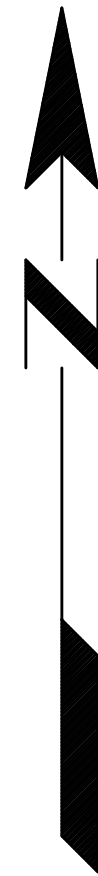
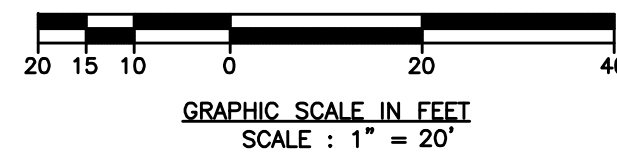
”PARCEL A”
(VACANT)

GROVE PARC PLAT
PLAT BOOK 178, PAGE 148

Wood
Power
Pole

S89°36'22"W 369.42' (P)
S89°31'02"W 369.12' (F)

ACREAGE
NOT INCLUDED

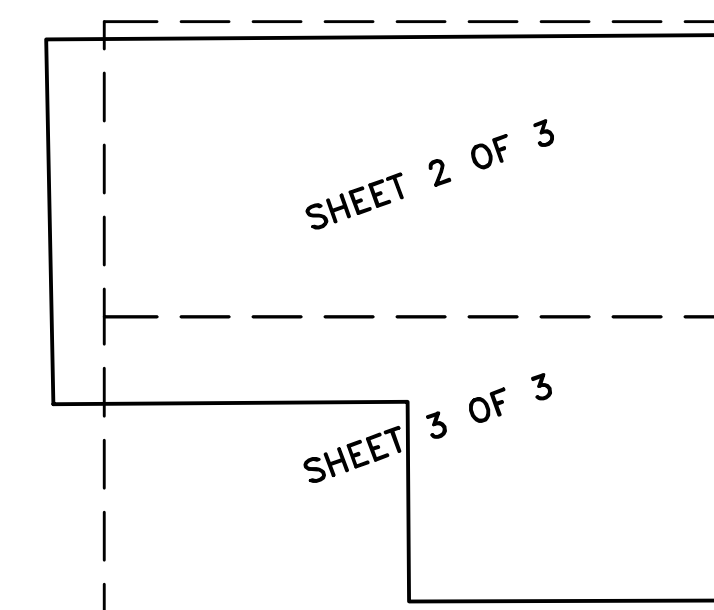


N0°24'49"W 208.14' (P)
N0°30'38"W 208.06' (F)

SEE SHEET 2 OF 3
MATCHLINE A-A

S89°45'03"W 330.00' (P)
S89°44'58"W (P2) S89°40'10"W (F)

S0°24'49"E 588.97' (P)
S0°24'54"E (P2)
S0°30'11"E 589.13' (F)



KEY MAP
TREE DETAIL AREAS

SEE SHEET 2 OF 3 FOR TREE LIST
SEE SHEET 1 OF 3 FOR LEGEND, CERTIFICATION AND BOUNDARY SURVEY

NO.	REVISION	BY	DATE
9	ADD TREE LOCATIONS AND DESCRIPTIONS	SAR	1/23/12
8	Update Boundary Survey and Topo FB 2065/17	SAR	1/23/12
7	Remove cert./change survey for name	RL	3/3/08
6	Add Topo FB 1945 Pages 57-61	AJHE	11/16/07
5	Revise per attorneys comments	RL	10/26/07
4	Revise per attorneys comments	RL	9/24/07
3	Revise per comments	RL	5/21/07
2	Revise Parcel Area	AJHE	4/6/07
1	UPDATE SURVEY / CONVERT TO CAD FB 1890 PGS 49-56	AJHE	3/30/07

**SURVEY OF PROPERTY
DESCRIBED HEREON**

GROVE PARC PLAT

JOHN A. GRANT, JR., INC.
CONSULTING ENGINEERS
3333 NORTH FEDERAL HIGHWAY
BOCA RATON, FLORIDA 33431
PH. NO. 561-395-3333 FAX NO. 561-395-3315
LICENSED BUSINESS NO. LB 50

MADE BY WR DATE 7/15/01 FB 1110/5-10
CHECKED DATE _____ SCALE 1" = 40'
JOB NO. JG-100-6531 SHEET 3 OF 3