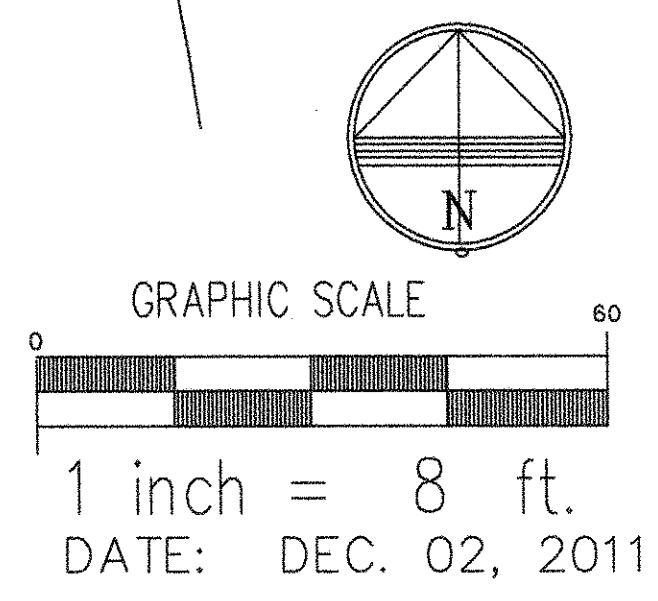


- PROPOSED LANDSCAPE PLANT LIST**
- PALM & TREE PLANT LIST**
- | abv. | sym. | qty. | botanical name | size | |
|------|----------|------|--------------------|------|--------|
| RYP | (Symbol) | 3 | FLORIDA ROYAL PALM | | NATIVE |
| | (Symbol) | 8 | GRAY WOOD, 24" DA | | |
| | (Symbol) | 3 | TOTAL TREES | | |

- SHRUB & GROUND COVER PLANT LIST**
- | abv. | sym. | qty. | botanical name | size | |
|------|----------|------|--|----------------------------------|--------|
| JAT | (Symbol) | 7 | JATROPHA CORAL PLANT | 4"HT. X 3"SPR. | |
| BBF | (Symbol) | 244 | BLUEBERRY FLAX | 12" OA. 1 GAL. CAN. SPUT, 18"OC. | |
| OYS | (Symbol) | 120 | OYSTER PLANT | 12" OA. 1 GAL. CAN. 18"OC. | |
| CBP | (Symbol) | 19 | ZAMIA FLURFURACEA CAROLINENSIS PALM | 36"HT. X 24"SPR. | NATIVE |
| GBP | (Symbol) | 5 | STRELITZIA REGINAE, GIANT BIRD OF PARADISE | 5' HT. X 5' SPR. 15 GAL. | |
| CFJ | (Symbol) | 4 | CONFEDERATE JASMINE VINE | 3' HT. X 3' SPR. 3 GAL. | |
| BOG | (Symbol) | 3 | BOUGAINVILLEA VINE, PINK | 6' HT. X 4' SPR. 15 GAL. | |
| | | | 392 TOTAL SHRUBS | | |

- LANDSCAPE IRRIGATION LEGEND**
- (Symbol) TDRD 570-4-SST IRRIGATION HEAD
 - (Symbol) TDRD 570-8-F IRRIGATION HEAD
 - (Symbol) TDRD 570-15-H IRRIGATION HEAD
 - (Symbol) TDRD 570-15-D IRRIGATION HEAD
 - (Symbol) IRRIGATION SLEEVE UNDER PAVEMENT
 - (Symbol) 1-1/2" IRRIGATION LINE AND PIPE SIZE



LANDSCAPE PLANTING PLAN

GENERAL NOTE: IRRIGATION SYSTEM LAY-OUT EXISTING WATER METER, BACKFLOW PREVENTOR, VALVES, CONTROLLERS, AND MISC. EQUIPMENT SHALL BE USED AS PART OF THE NEW SYSTEM. PARTS OF THE EXISTING SYSTEM IN DISREPAIR SHALL BE REPLACED WITH NEW EQUIPMENT.

PROPOSED LANDSCAPE PLANTING PLAN
 INFINITY SHOWROOM LANDSCAPE PLAN, COCONUT CREEK FLA.
 H. KURT KETTELHUT AND ASSOCIATES
 LANDSCAPE ARCHITECTURE & SITE PLANNING
 227 Cooby Blvd., Deerfield Beach, FL 33442, 954-428-4305

Robert Reid Wedding Architects & Planners, AIA, Inc.
 4112 Cypress Street - Tampa, Florida 33607-8133-879-6896
 612 South Military Trail - Deerfield Beach, Florida 33442-954-428-9361
 Florida License #s: Architectural/Interior Design: AA-C001123 - Engineering: 00002655

INFINITY OF COCONUT CREEK
 SAMPLE ROAD
 BUILDING EXTERIOR REFRESH
 5501 WEST SAMPLE ROAD,
 COCONUT CREEK, FLORIDA 33073

date	description
10/31/11	

THE DESIGN AND CONCEPTS DEPICTED HEREWITH ARE THE SOLE PROPERTY OF ROBERT REID WEDDING ARCHITECTS & PLANNERS, AIA, INC. NO REPRODUCTION, REVISIONS OR REUSE OF THIS DRAWING IS AUTHORIZED WITHOUT SPECIFIC WRITTEN PERMISSION. ALL RIGHTS RESERVED.