

<b>VIPER L SERIES</b> ENHANCED LARGE VIPER LUMINAIRE	Cat.#		
	Job		

**Specifications:**  
The Beacon Viper luminaire is available in two sizes with a wide choice of different LED Wattage configurations and optical distributions designed to replace HID lighting up to 1000W MH or HPS. Luminaires are suitable for wet locations.

**Construction:**

- Manufactured with die cast aluminum.
- Coated with a polyester finish that meets ASTM B117 corrosion test requirements and ASTM D522 coating and loss of adhesion test requirements.
- External hardware is corrosion resistant.
- One piece optical cartridge system consisting of an LED engine, LED lamps, optics, gasket and stainless steel base.
- Cartridge is held together with internal brass standoffs soldered to the board so that it can be field replaced as a one piece optical system.
- Two-piece silicone and micro-cellular polyurethane foam gasket ensures a weather-proof seal around each individual LED.

**Electrical:**

- Luminaire accepts 100V through 277V, 50 Hz to 60 Hz (UNV) 347V or 480V input.
- Power factor is  $\geq .90$  at full load.
- All electrical components are rated at 50,000 hours at full load and 25°C ambient conditions per MIL-C177-Notice 2.
- Dimming drivers are standard, but must contact factory to request wiring leads for purpose of external dimming controls.
- Component-to-component wiring within the luminaire may carry no more than 80% of rated load and is certified by UL for use at 600VAC at 90°C or higher.
- Plug disconnects are certified by UL for use at 600 VAC, 13A or higher, 13A rating applies to primary (AC) side only.
- Future electrical compartment shall contain all LED driver components and shall be provided with a push-button terminal block for AC power connections.
- Ambient operating temperature -40°C to 40°C.
- Optional 7-pin ANSI C136-41-2013 twist-lock photo control receptacle available. Compatible with ANSI C136-41 external wireless control devices.
- Surge protection - 20KA.
- LifeShield™ Circuit - protects luminaire from excessive temperature. The device shall activate at a specific, factory preset temperature, and progressively reduce power over a finite temperature range. Operation shall be smooth and undetectable to the eye. Thermal circuit is designed to "fall out", allowing the luminaire to revert to full power in the event of an interruption of its power supply, or faulty wiring connection to the drivers. The device shall be able to co-exist with other 0-10V control devices (occupancy sensors, external dimmers, etc.).

**Controls/Options:**

- Available with an optional passive infrared (PIR) motion sensor capable of detecting motion 360° around the luminaire. When no motion is detected for the specified time, the Motion Response system reduces the Wattage to factory preset level, reducing the light level accordingly. When motion is detected by the PIR sensor, the luminaire returns to full Wattage and full light output. Please contact Beacon Products if project requirements vary from standard configuration.
- Available with Energent for optional set dimming, speed dimming with simple delay, or timed dimming based on time of night (see [www.beaconproducts.com/products/energent/](http://www.beaconproducts.com/products/energent/)).
- In addition, Viper can be specified with SiteSync™ wireless control system for reduction in energy and maintenance cost while optimizing light quality (S47). See ordering information or visit [www.hubbellighting.com/site-sync](http://www.hubbellighting.com/site-sync) for more details.

**Installation:**

- Mounting options for horizontal arm, vertical tension or traditional arm mounting available. Mounting hardware included.

**Finish:**

- IPS polyester powder-coat electrostatically applied and thermocured.
- IPS finish consists of a five stage pretreatment regimen with a polymer primer base and top coated with a thermocured super TGIC polyester powder coat finish.
- The finish meets the AAMA 605.2 performance specification which includes passing a 3000 hour salt spray test for corrosion resistance and resists cracking or loss of adhesion per ASTM D522 and resists surface impacts of up to 160 mph pounds.

**Listings:**

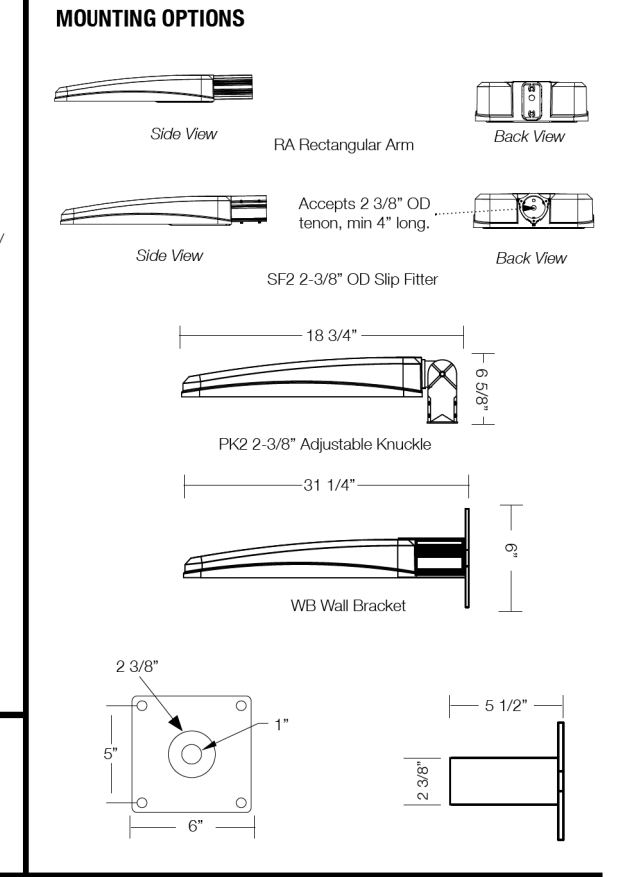
- DesignLights Consortium (DLC) qualified, consult DLC website for more details: <http://www.designlights.org/DLC/>
- Listed to UL 1598 and CSA C22.2/250.0-24 for wet locations and 40°C ambient temperature.
- 3G rated for ANSI C136.31 high vibration applications with SF2 mounting.
- IDA approved.

**Warranty:**  
Five year limited warranty for more information visit [www.hubbellighting.com/resources/warranty](http://www.hubbellighting.com/resources/warranty)



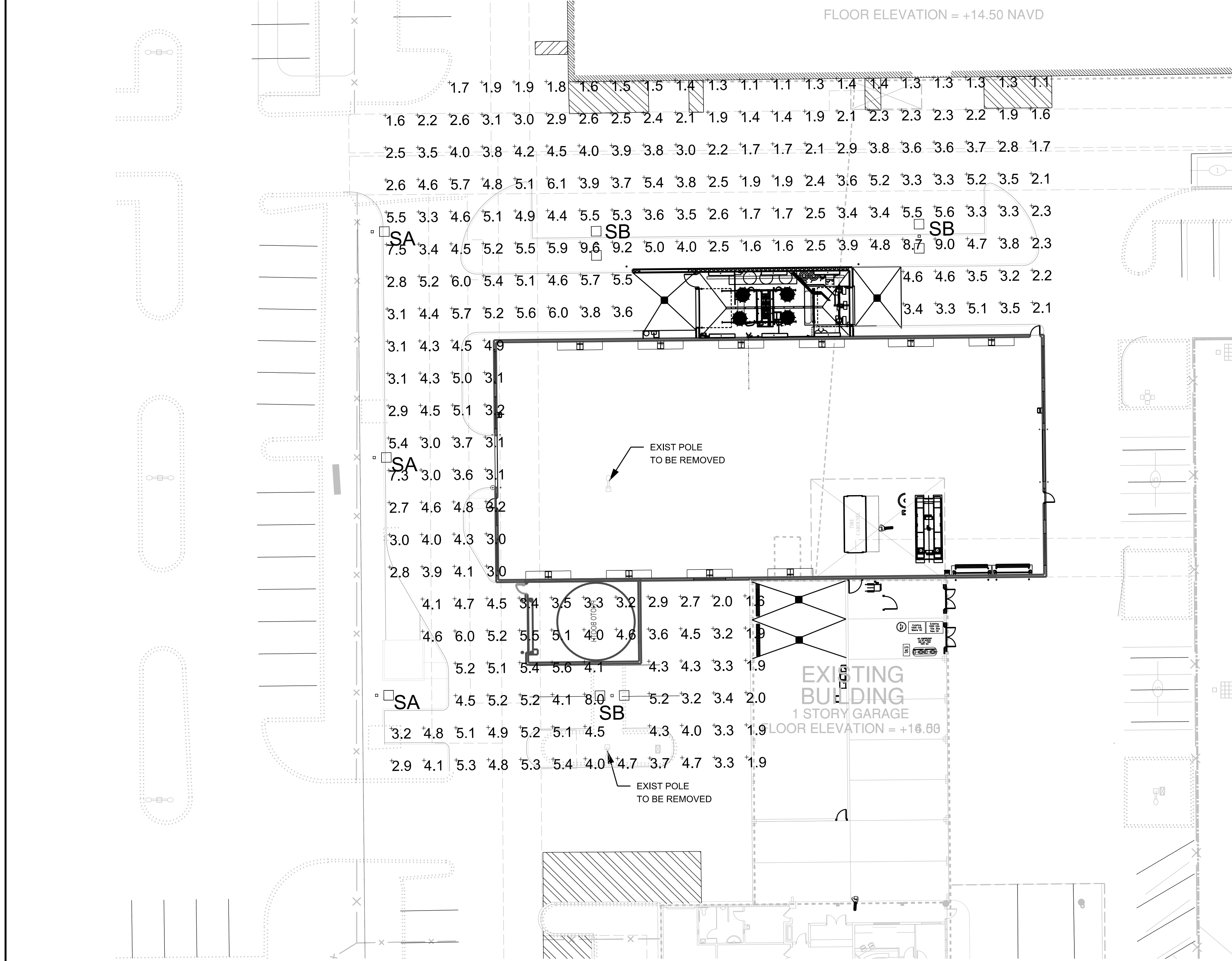
**DIMENSIONS**

Dimension	Value	Weight	EPA
A	29.12"	14.25"	25.0 lbs
B	24.19"	14.25"	25.0 lbs
C	14.25"	14.25"	25.0 lbs
D	4.13"	14.25"	25.0 lbs
E	1.00"	14.25"	25.0 lbs
F	7.04 mm	62 mm	115 mm
G	62 mm	105 mm	11.3 kg



Beacon Products • 2041 59th Avenue Circle East, Bradenton, FL 34203 • Phone: 800-345-4928  
Due to our continued efforts to improve our products, product specifications are subject to change without notice.  
© 2016 BEACON PRODUCTS. All Rights Reserved • For more information visit our website: [www.beaconproducts.com](http://www.beaconproducts.com) • Printed in USA, SPEC 11/16

NOTE: PROPOSED LIGHT POLES SHALL BE DIRECT BURIED CONCRETE POLES MEETING LATEST FBC WIND REQUIREMENTS. LIGHT FIXTURES SHALL BE 25' ABOVE ADJACENT GRADE.



**LUMINAIRE SCHEDULE**

Symbol	Label	Qty	Catalog Number	File	LLF	Watts
□	SA	3	BEACON PRODUCTS VPL 80NB-180 3K T4 UNV COLOR (POLE MT @ 25 FT AFG)	VP-L-80NB-180-3K-T4.ies	1.00	180
□	SB	3	BEACON PRODUCTS VPL 80NB-180 3K T4 UNV COLOR (POLE MT @ 25 FT AFG)	VP-L-80NB-180-3K-T4.ies	1.00	360

**TOTAL LUMENS ALLOWED PER SITE (PROPOSED AREA ONLY)**

HARDSCAPE AREA (SF)	22,483
ALLOWED LUMENS PER SF OF HARDSCAPE (COMMERCIAL)	7.5
SITE ALLOWED TOTAL LUMENS	168,622
9 FIXTURES @ 17,485 LUMENS EACH	157,365

**STATISTICS**

Description	Symbol	Avg	Max	Min	Max/Min	Avg/Min
New Parking Lot/Drive Area (FC @ 3 FT AFG)	+	3.7 fc	9.6 fc	1.1 fc	8.7:1	3.4:1

PROPOSED LIGHTS TO BE INSTALLED WITH TIMERS TO DIM LIGHTS AT NIGHT TO 20% OF MAXIMUM LIGHT OUTPUT.

NO.	DATE	BY	REVISIONS	NO.	DATE	BY	REVISIONS
4	10/17/17	JMH	ADD TOTAL LUMENS ALLOWED TABLE				
3	8/29/17	JMH	ADD LIGHT POLE NOTES				
2	6/9/17	JMH	REVISE PLANS PER CITY STAFF COMMENTS				
1	2/20/17	JMH	ADD PLAN PER DRC COMMENTS				

Designed by: JH Date: 3/16  
 Drawn by: AZ Date: 3/16  
 Checked by: JH Date: 3/16



**HSQ GROUP, INC.**  
 Engineers · Planners · Surveyors  
 1489 West Palmetto Park Road, Suite 340  
 Boca Raton, Florida 33486 · 561.392.0221  
 C26258 · LB7924

**INFINITI OF COCONUT CREEK**  
**PHOTOMETRICS PLAN**

SCALE: 1" = 20'  
 PROJECT NUMBER: 1604-27  
 SHEET NUMBER: PH-1

Date: 3/16  
 Approved by: JAY HUEBNER, P.E.  
 Registered Engineer No. 54615  
 State of Florida

z:\projects\2015\1502-15\_greenacres\_hillside\drainage\state plan\1502-15-Pre.dgn