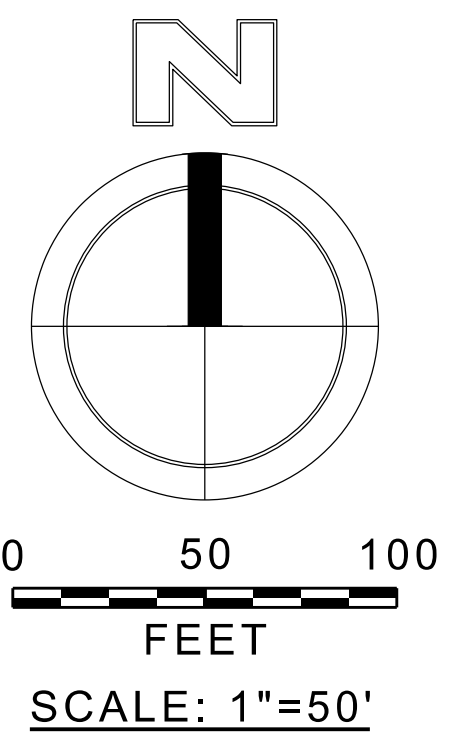
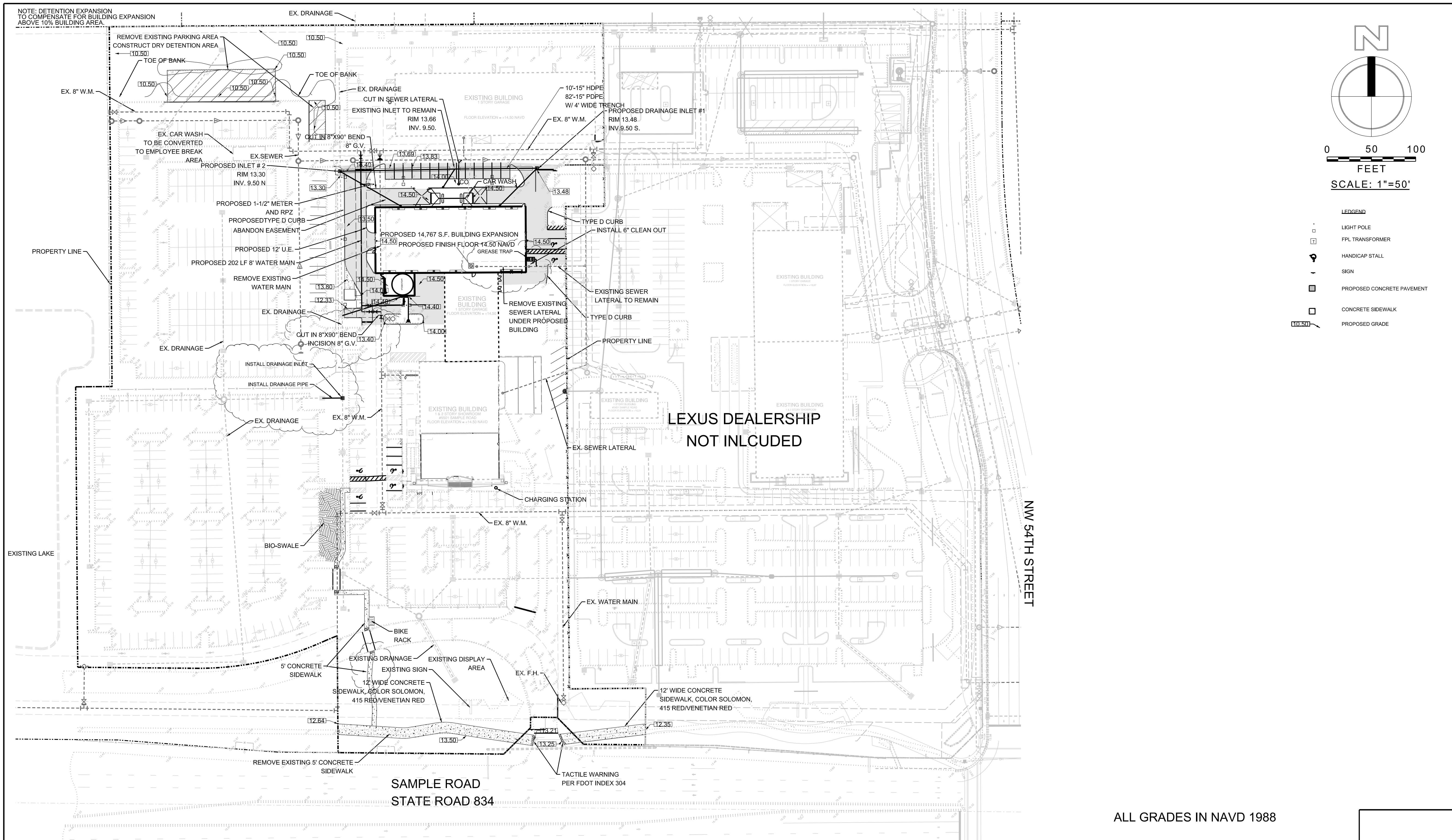


NOTE: DETENTION EXPANSION TO COMPENSATE FOR BUILDING EXPANSION ABOVE 10% BUILDING AREA.

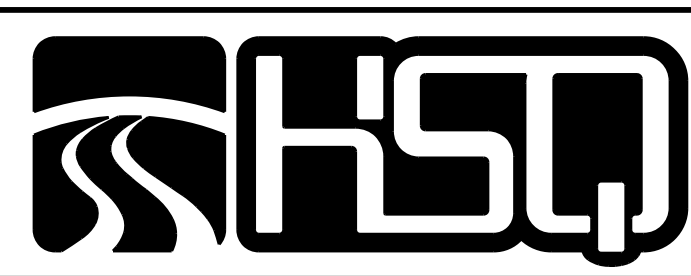


- LEGEND**
- LIGHT POLE
  - FPL TRANSFORMER
  - ♿ HANDICAP STALL
  - ⊕ SIGN
  - ▣ PROPOSED CONCRETE PAVEMENT
  - ▤ CONCRETE SIDEWALK
  - ▨ PROPOSED GRADE

ALL GRADES IN NAVD 1988

NO.	DATE	BY	REVISIONS	NO.	DATE	BY	REVISIONS
2	1/3/18	JMH	REVISE PER PERMITTING PROCESS				
1	2/20/17	JMH	REVISE PER DRC COMMENTS				

Designed by: JH Date: 3/16  
 Drawn by: AZ Date: 3/16  
 Checked by: JH Date: 3/16



**HSQ GROUP, INC.**  
 Engineers · Planners · Surveyors  
 1489 West Palmetto Park Road, Suite 340  
 Boca Raton, Florida 33486 · 561.392.0221  
 C26258 · LB7924

**INFINITI OF COCONUT CREEK**  
 CONCEPTUAL ENGINEERING PLAN

SCALE:  
 1" = 50'  
 PROJECT NUMBER:  
 1604-27  
 SHEET NUMBER:  
 CE-1

Date: 3/16/18  
 Approved by: JAY HUEBNER, P.E.  
 Registered Engineer No. 54615  
 State of Florida

2:\projects\2016\1604-27\4\infiniti of coconut creek\drawings\site plan\160427-ec001.dgn