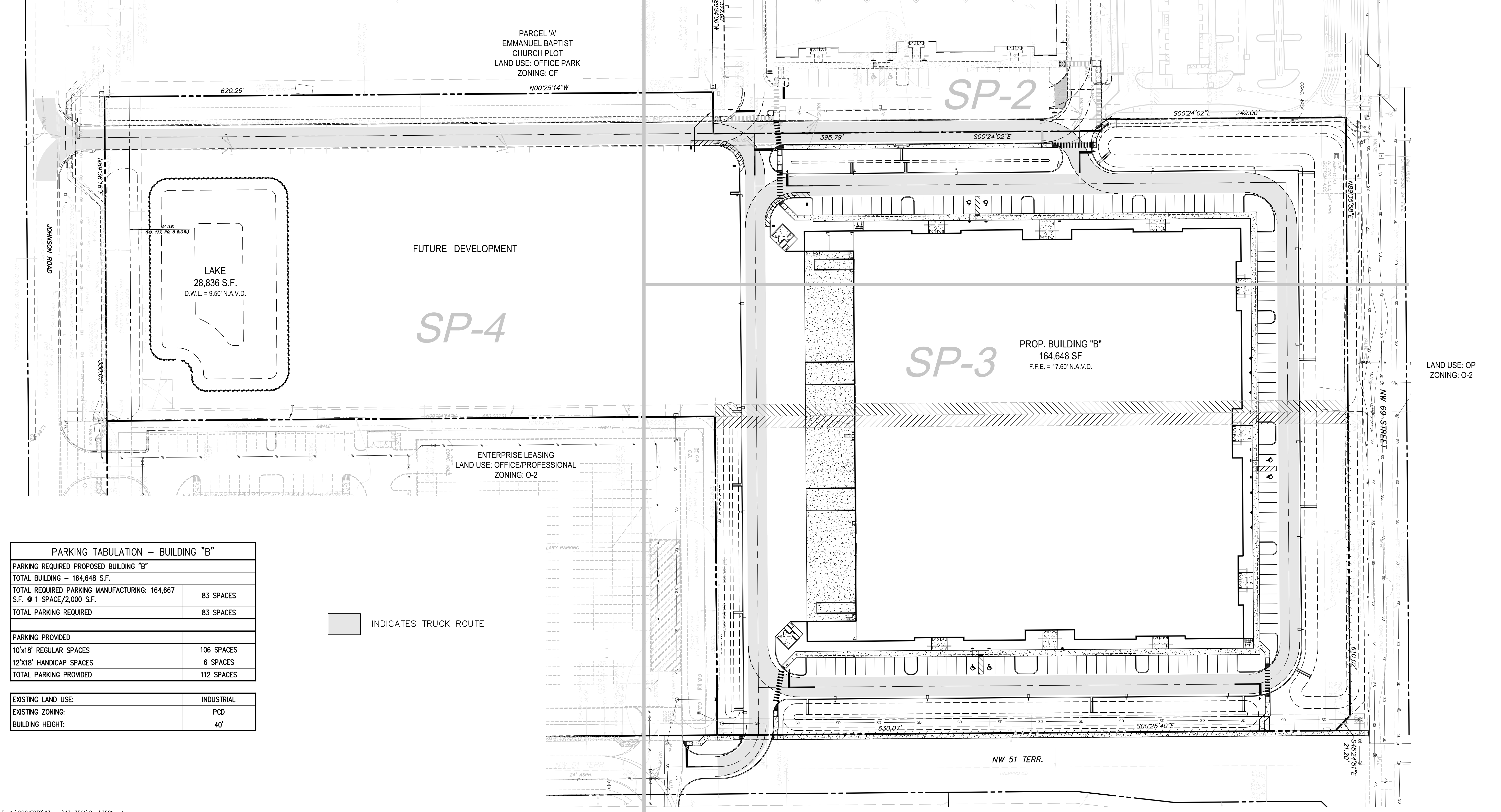


SITE PLAN DATA			
	S.F.	AC.	%
GREEN SPACE AREA	285,715	6.56	38.06%
PAVEMENT AREA	91,267	2.10	12.16%
EXIST. PAVEMENT AREA	80,798	1.85	10.76%
CONCRETE AREA	32,696	0.75	4.36%
EXIST. CONCRETE AREA	21,638	0.50	2.88%
BUILDING AREA "B"	164,648	3.78	21.93%
EXIST. BUILDING AREA "A"	45,057	1.03	6.00%
LAKE	28,836	0.66	3.84%
TOTAL AREA	750,656	17.23	100.00%

PERVIOUS CALCULATIONS			
	S.F.	AC.	%
PERVIOUS	285,715	6.56	38.06%
IMPERVIOUS	464,941	10.67	61.94%
	PRE-DEVELOPMENT	POST DEVELOPMENT	
PERVIOUS	15.90 AC.	6.56 AC.	
IMPERVIOUS	1.33 AC.	10.67 AC.	

PARKING TABULATION - BUILDING "A"	
PARKING REQUIRED EXISTING BUILDING "A"	
TOTAL BUILDING - 45,057 S.F.	
TOTAL OFFICE - 5,100 S.F.	
10% CREDIT FOR OFFICE - 4,506 S.F.	
TOTAL ADDITIONAL OFFICE - 594 S.F.	
TOTAL REQUIRED PARKING MANUFACTURING: 44,463 S.F. @ 1 SPACE/1,200 S.F.	38 SPACES
ADDITIONAL PARKING OFFICE OVER 10% 594 S.F. @ 1 SPACE/300 S.F.	2 SPACES
TOTAL PARKING REQUIRED	40 SPACES
PARKING PROVIDED	
10'x18' REGULAR SPACES	43 SPACES
12'x18' HANDICAP SPACES	2 SPACES
TOTAL PARKING PROVIDED	45 SPACES

EXISTING LAND USE:	INDUSTRIAL
EXISTING ZONING:	PCD
BUILDING HEIGHT:	40'



PARKING TABULATION - BUILDING "B"	
PARKING REQUIRED PROPOSED BUILDING "B"	
TOTAL BUILDING - 164,648 S.F.	
TOTAL REQUIRED PARKING MANUFACTURING: 164,667 S.F. @ 1 SPACE/2,000 S.F.	83 SPACES
TOTAL PARKING REQUIRED	83 SPACES
PARKING PROVIDED	
10'x18' REGULAR SPACES	106 SPACES
12'x18' HANDICAP SPACES	6 SPACES
TOTAL PARKING PROVIDED	112 SPACES

EXISTING LAND USE:	INDUSTRIAL
EXISTING ZONING:	PCD
BUILDING HEIGHT:	40'

INDICATES TRUCK ROUTE

Sun-Tech Engineering, Inc.
 Engineers - Planners - Surveyors
 Certificate of Auth. # 7097
 Phone (954)777-3123
 FL Lauderdale, FL 33311
 www.suntecheng.com

NO.	DATE	DESCRIPTION

JOHNSON TECHNOLOGY PARK II
 FLORIDA
 CITY OF COCONUT CREEK
SITE PLAN

DATE:
Oct. 2014

SCALE:
1"=50'

DESIGNED BY:
M.G.

DRAWN BY:
M.A.S.

JOB NUMBER
13-3581

SHEET No.
SP-1

SEAL

Apr 11 2016
 CLIFFORD R. LOITAN, P.E.
 FL. REG. NO. 56890

K:\PROJECTS\13-3581\DWG\SP-1.dwg, SP-1, 4/11/2016 2:25:31 PM, I:\Sun-Tech Engineering, Inc. (NAS)

FILE: K:\PROJECTS\13-3581\DWG\SP-1.dwg
 PLOT DATE: 4/11/2016 2:25 PM BY: Miguel A. Sosa
 LAYOUT: [SP-1]