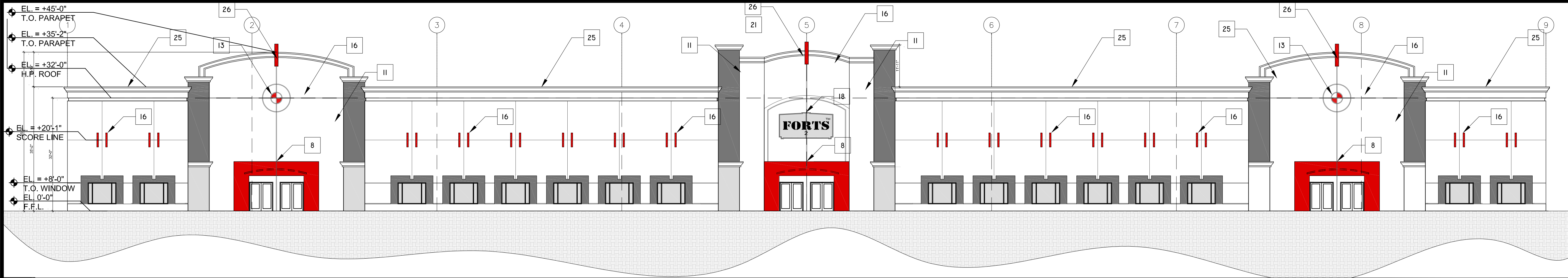


I am accepting and utilizing any form of media generated and provided by T&T Design and Development Inc. who shall be deemed the author of the drawings and data, and shall retain all common law and other rights, including copyrights. The Recipient further agrees not to use the documents in whole or in part, for any purpose other than the project which is the subject of this Agreement. The Recipient agrees to waive all claims against T&T Design and Development Inc. harmless from any damage, liability or cost, from any unauthorized changes or reuse of the drawings and data for any other project by anyone other than T&T Design and Development Inc. In addition, the Recipient agrees, to the fullest extent permitted by law, to indemnify and hold T&T Design and Development Inc. harmless from any damage, liability or cost, from any unauthorized changes or reuse of the drawings and data for any other project by anyone other than T&T Design and Development Inc. Under no circumstances shall transfer of the drawings and other instruments of service on electronic media for use by the Recipient be deemed a sale by the Recipient of any particular purpose.



1 FRONT ELEVATION (NORTH)

SCALE: 1/16" = 1'-0"

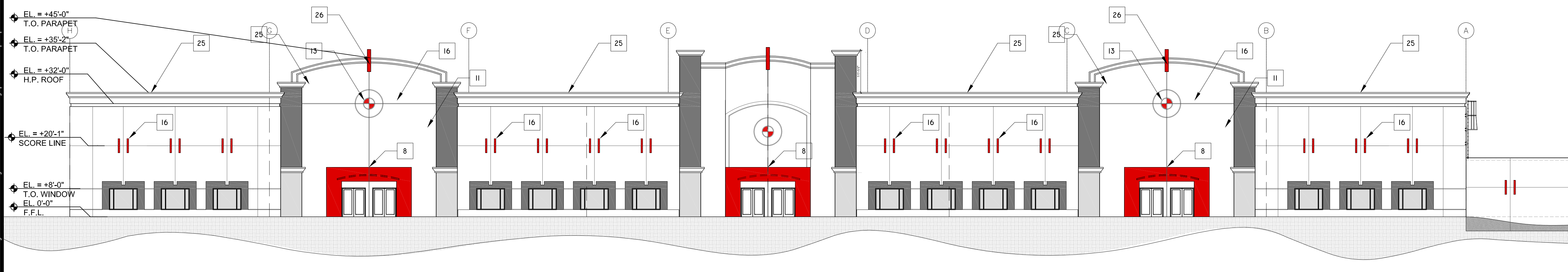
MATERIAL / COLOR SCHEDULE		
KEY NOTES	COLOR TYPE	COLOR CODE
1 IMPACT GLASS	DARK GRAY	T-121
2 IMPACT GLASS "WINDOW FRAME"	WHITE TO MATCH PURE WHITE	SW 7005
3 IMPACT GLASS "STOREFRONT"	WHITE TO MATCH PURE WHITE	SW 7005
4 SPANDREL GLASS		
5 CANVAS COVER	BLACK	BLACK
6 METAL FRAME CANOPY SUPPORT	BLACK	BLACK
7 CONCRETE COLUMN	MISTY	SW 6232
8 PANEL COLOR	POINSETTIA	SW 6594 (ENTRY)
9 PANEL COLOR	ROCK CANDY	BW 6231 (BASE)
10 PANEL COLOR	UNCERTAIN GRAY	SW 6234 (BANDING)
11 PANEL COLOR	MISTY	SW 6232 (2ND BASE)
12 RECESS SCORE LINE (3/4" X 3/4")	FLORIDA WHITE	T-121
13 RECESS SCORE LINE (2" X 3/4")	FLORIDA WHITE	T-121
14 RECESS SCORE LINE (10" X 3/4")	FLORIDA WHITE	T-121
15 MAN DOOR 3'-0" x 6'-8"	COLOR TO MATCH	
16 RECESS SCORE	POINSETTIA	SW 6594 (ABOVE WINDOWS)
17 10'-0" X 10'-0" GALVANIZED DOOR	COLOR TO MATCH	
18 FUTURE SIGN (SEPARATE PERMIT)	N/A	N/A
19 DOWN SPOT	ROCK CANDY	BW 6231
20 WATER LEADER	ROCK CANDY	BW 6231
21 SINGAGE LOCATION		
22 EXTERIOR BLDG. LIGHTS		
23 MAN DOOR LIGHTS		
24 EXTERIOR METAL RAILING		
25 FOAM TRIM BANDING	FLORIDA WHITE	BW 6231
26 FOAM TRIM ACCENT	POINSETTIA	T-121
27 SKYLIGHT TYPICAL	BASE WHITE	SW 6594
28 SCUPPER	TO MATCH WALL	
29 DOCK BUMPER	RUBBER BLACK	
30 ACCESS LADDER	TO MATCH WALL	BW 6231

GENERAL NOTES:

- A. ALL WINDOWS SHALL HAVE IMPACT RESISTANT GLASS AND FRAME SYSTEMS.
- B. COLORS FOR RECESS TO BE SELECTED BY ARCHITECT.
- C. ALL GUTTERS ARE TO BE CENTERED OVER CONTROL JOINTS WHERE APPLICABLE.
- D. ALL AIR CONDITION UNITS WILL BE LOCATED ON TOP OF BUILDING ADJACENT TO PARAPET WALL AND WILL BE SCREENED FROM VIEW.
- E. ALL COLOR FINISH TO BE TEXCOTE OR EQUAL.
- F. PANEL COLORS TO MATCH SHERWIN WILLIAMS OR EQUAL.
- G. CONTRACTOR TO SUBMIT ALL COLOR SAMPLES AND SHOP DRAWINGS FOR APPROVAL.

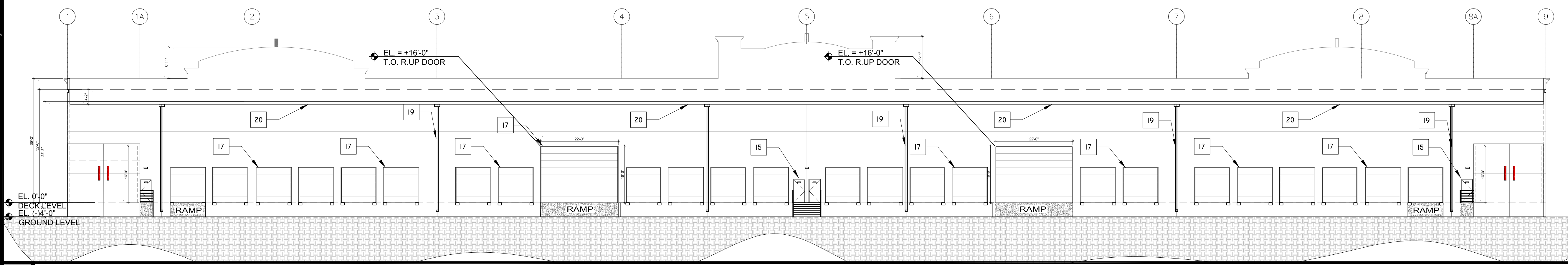
1 FINISH SCHEDULE

SCALE: N/A



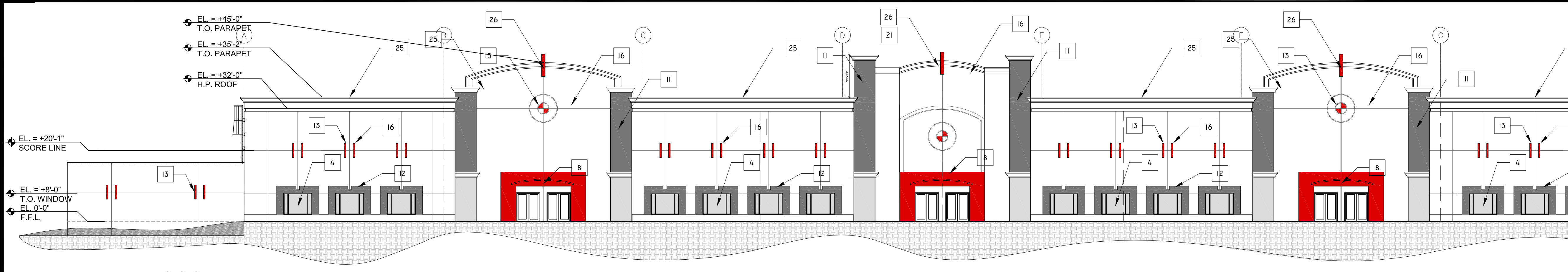
2 SIDE ELEVATION (WEST)

SCALE: 1/16" = 1'-0"



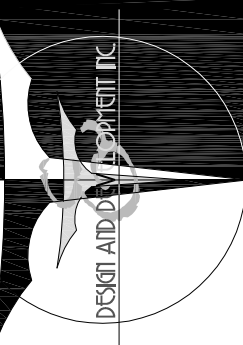
3 REAR ELEVATION (SOUTH)

SCALE: 1/16" = 1'-0"




4 SIDE ELEVATION (EAST)

SCALE: 1/16" = 1'-0"



T&T Design and Development Inc.
6810 Lyons Technology Circle
Suite 140, Coconut Creek, FL
Ph: (954) 725-9499
Fax: (954) 725-9188
www.ttdesigninc.com

JOHNSON TECHNOLOGY PARK 2
COCONUT CREEK, FLORIDA, 33073



ISSUE FOR: DRC SUBMITTAL
DATE: 10-02-2015
REV: 2
DRC CORRECTIONS #1: 02-17-2016
DRC CORRECTIONS #2: 04-11-2016

SHEET TITLE:
BUILDING 2 ELEVATIONS

DRAWING NO.
A201

EDUARDO TORRES AR 94792