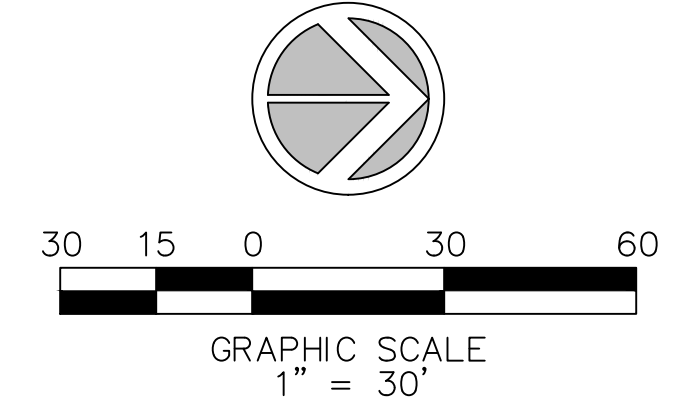
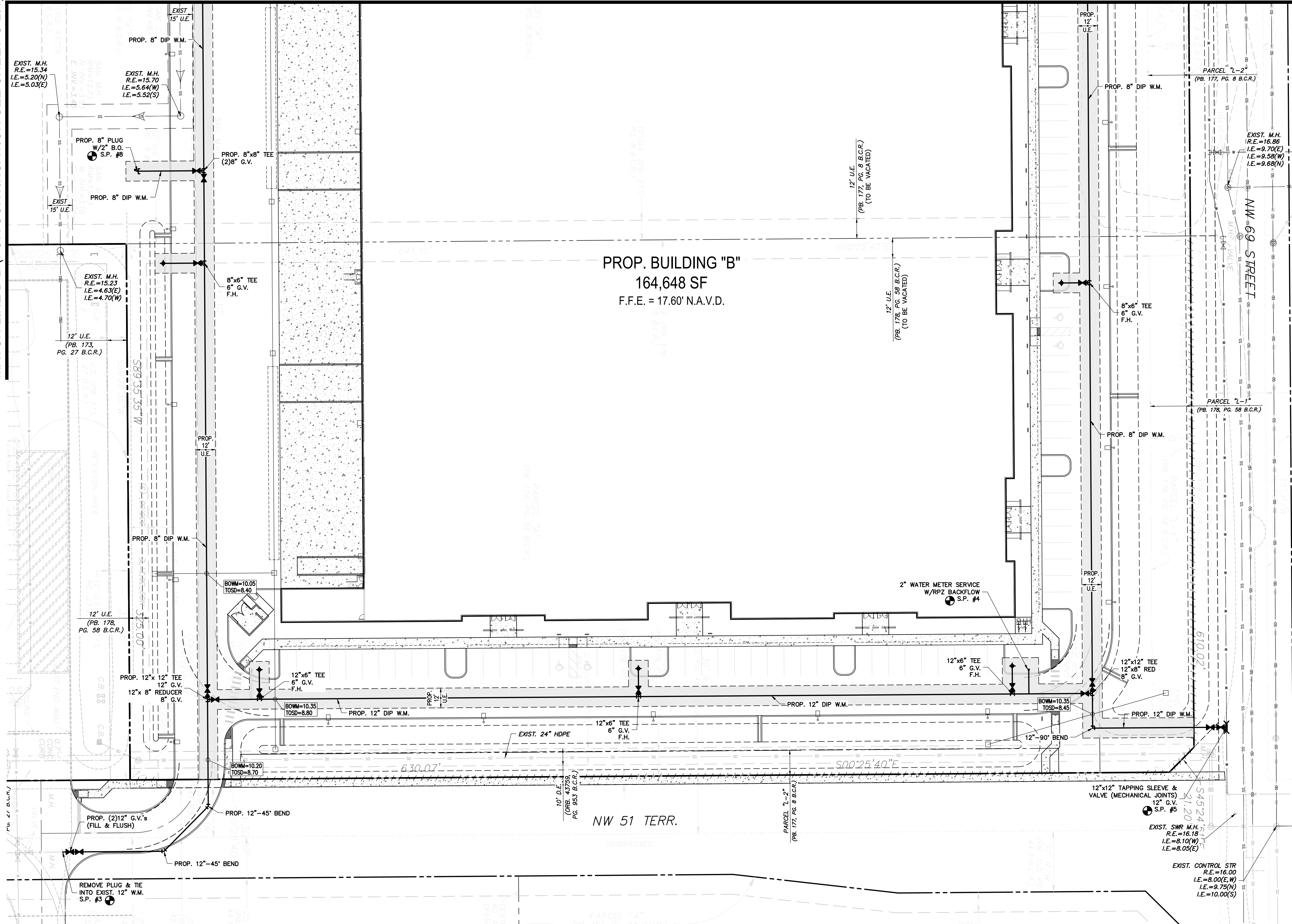


MATCH LINE A-A (FOR CONTINUATION SEE SHEET C-2.2)

MATCH LINE B-B (FOR CONTINUATION SEE SHEET C-2.4)



- NOTE:
1. ALL TAPPING SLEEVES TO BE MECHANICAL JOINT.
 2. FIRE HYDRANTS TO BE A MINIMUM 6' FROM FDC.
 3. GATE VALVES SHALL BE A MINIMUM OF 4' AND MAXIMUM 7' FROM FIRE HYDRANTS.
 4. DOUBLE VALVES REQUIRED IN ALL TIE-IN LOCATIONS.

WATER & SEWER LEGEND	
	DOUBLE WATER METER SERVICE
	SINGLE WATER METER SERVICE
	LENGTH, SIZE & TYPE OF WATER MAIN
	FIRE HYDRANT, GATE VALVE & TEE ASSEMBLY
	PROPOSED GATE VALVE
	BACTERIOLOGICAL SAMPLING POINT
	EXISTING OR FUTURE UTILITIES
	D.I.P. PIPE
	R.E.
	I.E.
	MANHOLE DESIGNATION
	LENGTH & SLOPE OF PIPE
	DOUBLE SEWER LATERAL
	SINGLE SEWER LATERAL
	CLEAN OUT TO GRADE

NOTE: ALL ELEVATIONS IN NAVD 88

FILE: K:\PROJECTS\13-xxx\13-3581\Draw\3581ws.dwg
 PLOT DATE: 4/11/2016 2:56 PM BY: Miguel A. Sosa
 LAYOUT: [C-2.3]

Sun-Tech Engineering, Inc.
 Engineers - Planners - Surveyors
 1600 West Oakland Park Boulevard
 Ft. Lauderdale, FL 33311
 www.suntecheng.com
 Certificate of Auth. # 7097
 Phone (954)777-3123
 Fax (954)777-3114

NO.	DATE	DESCRIPTION

JOHNSON TECHNOLOGY PARK II
 CITY OF COCONUT CREEK
WATER AND SEWER PLAN
 FLORIDA

DATE:
 Oct. 2014

SCALE:
 1"=30'

DESIGNED BY:
 M.G.

DRAWN BY:
 M.A.S.

JOB NUMBER
 13-3581

SHEET No.
 C-2.3

SEAL

Apr 11 2016
 CLIFFORD R. LOITAN, P.E.
 FL. REG. NO. 56890