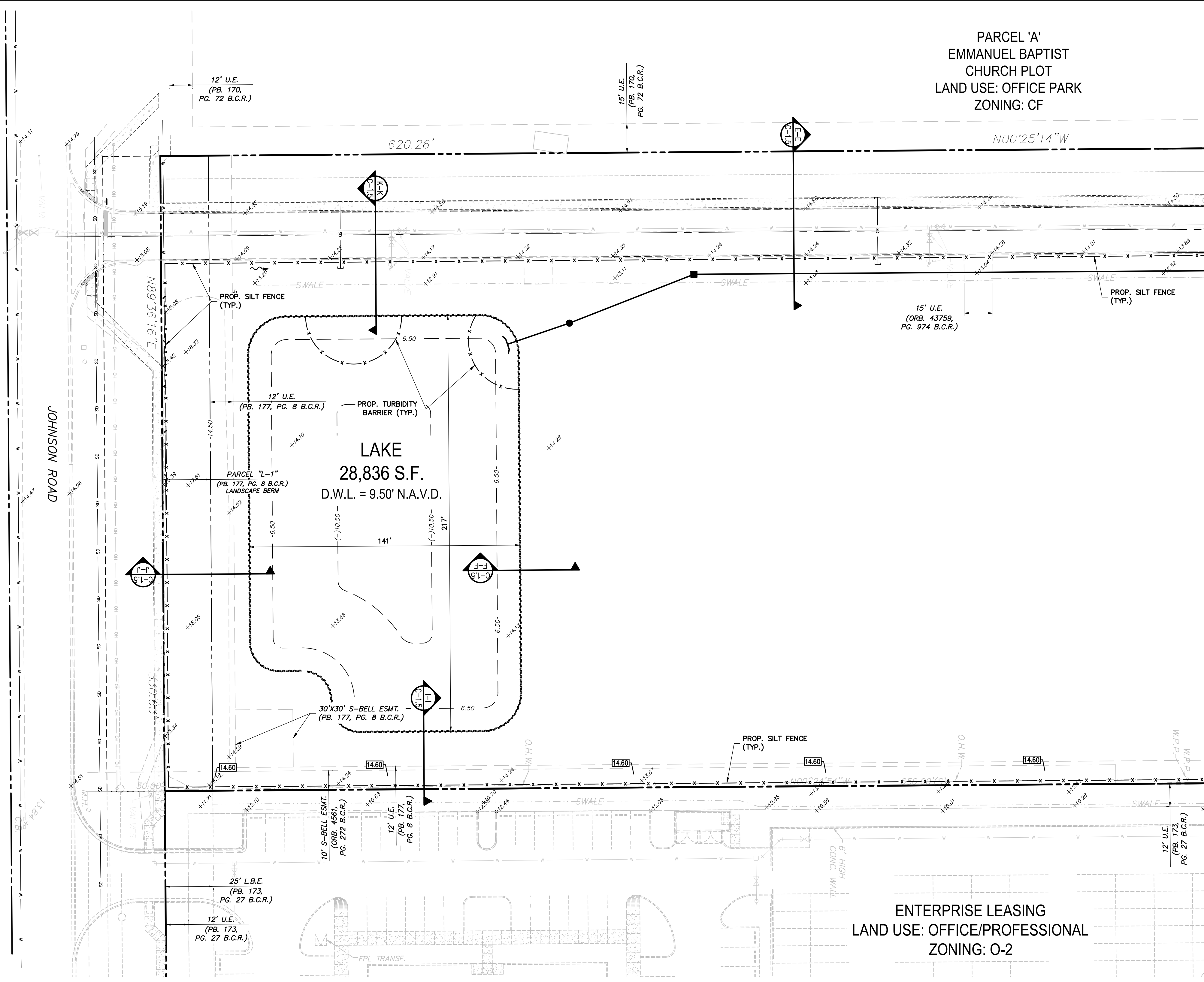


K:\PROJECTS\13-3581\DWG\13-3581\13-3581.dwg, C:\4-4112016\13-3581\13-3581.dwg, C:\4-4112016\13-3581\13-3581.dwg, C:\4-4112016\13-3581\13-3581.dwg, C:\4-4112016\13-3581\13-3581.dwg

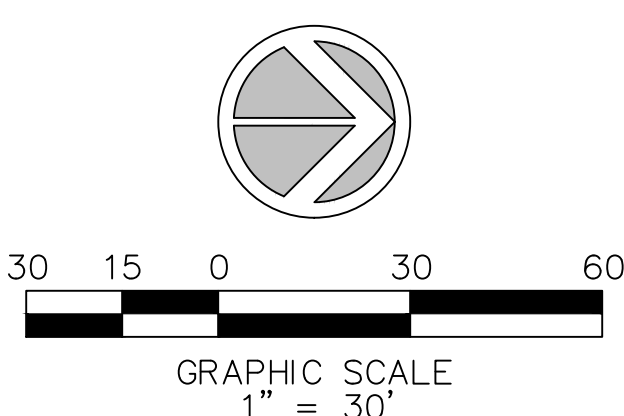
FILE: K:\PROJECTS\13-3581\13-3581\13-3581.dwg
 PLOT DATE: 4/11/2016 3:00 PM BY: Miguel A. Sosa
 LAYOUT: [C-3.4]



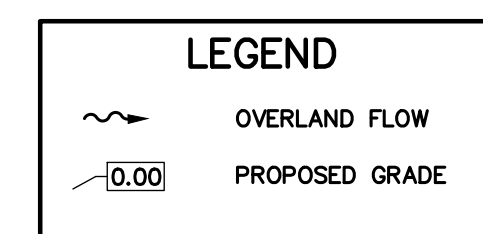
PARCEL 'A'
 EMMANUEL BAPTIST
 CHURCH PLOT
 LAND USE: OFFICE PARK
 ZONING: CF

ENTERPRISE LEASING
 LAND USE: OFFICE/PROFESSIONAL
 ZONING: O-2

MATCH LINE B-B (FOR CONTINUATION SEE SHEET C-3.3)
 MATCH LINE B-B (FOR CONTINUATION SEE SHEET C-3.2)



NOTES:
 1. THIS PLAN REFLECTS REQUIREMENTS APPLICABLE TO PROTECTING SURFACE WATER RESOURCES IN STORMWATER MANAGEMENT SITE PLANS OR SITE PERMITS APPROVED BY STATE, TRIBAL OR LOCAL OFFICIALS.
 2. SEDIMENT CONTROL MEASURES ARE TO BE MAINTAINED SO THAT SEDIMENT IS REMOVED FROM SEDIMENT BARRIERS WHEN THE DESIGN CAPACITY IS REDUCED BY 50%
 TOTAL SITE = 17.23 Ac.
 SITE AREA TO BE DISTURBED = 17.23 Ac.
 WETLAND AREA TO BE MITIGATED = 00.00 Ac.
 RUNOFF COEFFICIENT "C"
 BEFORE CONSTRUCTION = 0.90
 DURING CONSTRUCTION = 0.70
 AFTER CONSTRUCTION = 0.80



NOTE: ALL ELEVATIONS IN NAVD 88

Sun-Tech Engineering, Inc.
 Engineers - Planners - Surveyors
 Certificate of Auth. # 7097
 Phone (954)777-3123
 Fax (954)777-3114
 1600 West Oakland Park Boulevard
 Ft. Lauderdale, FL 33311
 www.suntecheng.com

NO.	DATE	DESCRIPTION

JOHNSON TECHNOLOGY PARK II
 CITY OF COCONUT CREEK, FLORIDA
STORMWATER POLLUTION PREVENTION PLAN

DATE:
 Aug. 2015

SCALE:
 1"=30'

DESIGNED BY:
 M.G.

DRAWN BY:
 M.A.S.

JOB NUMBER
 13-3581

SHEET No.
 C-3.4

SEAL

Apr 11 2016
 CLIFFORD R. LOITAN, P.E.
 FL. REG. NO. 56890