

ON THEIR DOOR IN WHITE VINYL. LETTERING SHALL NOT EXCEED 4" IN HEIGHT.

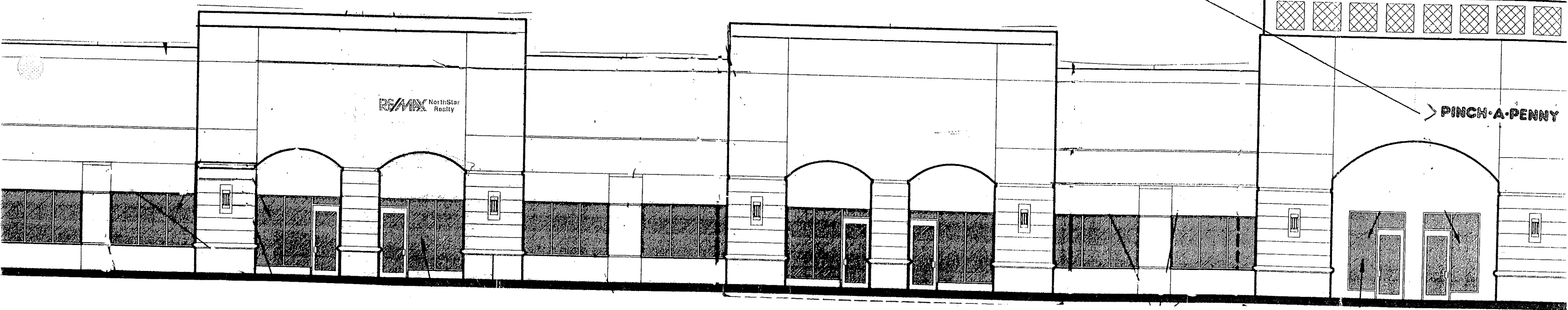
3/32" = 1 FOOT

TYPICAL TENANT SIGN SIGN BAND REVERSE CHANNEL LETTERS 1/4" ALUMINUM PLATE LETTERS

RE/MAX NorthStar Realty

PINCH·A·PENNY

PINCH·A·PENNY



Building Facade

**SIGN CRITERIA
4171 HILLSBORO**

REVERSE CHANNEL LETTERS FABRICATED OF .063 ALUMINUM.

SECONDARY COPY [EXAMPLE REMAX] THAT IS LESS THAN 8" TALL MAY BE FABRICATED IN 1/4" ALUMINUM PLATE LETTERS, STUD-MOUNTED TO WALL, 1/2" STAND-OFF.

REVERSE CHANNEL LETTERS MAY BE, ILLUMINATED OR NON-ILLUMINATED, WHITE NEON ONLY.

RETURNS TO BE 2" DEEP WITH LETTERS MOUNTED ON BUILDING WITH ALUMINUM STAND-OFFS, APPROXIMATELY 3" OFF WALL.

LETTERS SHALL NOT EXCEED 24" IN HEIGHT, NOR EXCEED 75% OF THE FAÇADE IT IS LOCATED ON.

TENANTS WITH A REGISTERED LOGO MAY USE THEIR LOGO, FONT AND COLORS. ALL OTHERS SHALL USE WHITE LETTERS AND THE FONT OF THEIR CHOICE.

ALL SIGNS MUST HAVE WRITTEN APPROVAL OF LEDER HILLSBORO COMPANY, LTD., AND MUST BE PERMITTED WITH THE CITY OF COCONUT CREEK. A COPY OF THE PERMIT MUST BE SUBMITTED TO THE OWNER AFTER INSPECTIONS ARE FINALED.

WINDOW LETTERING IS NOT PERMITTED. TENANTS MAY HAVE THEIR NAME AND HOURS OF OPERATION ON THEIR DOOR IN WHITE VINYL. LETTERING SHALL NOT EXCEED 4" IN HEIGHT.