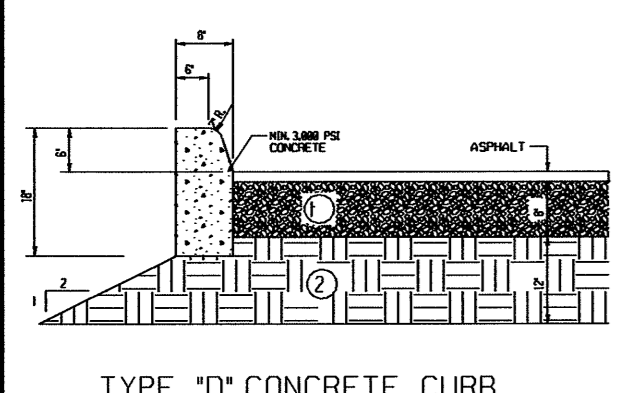
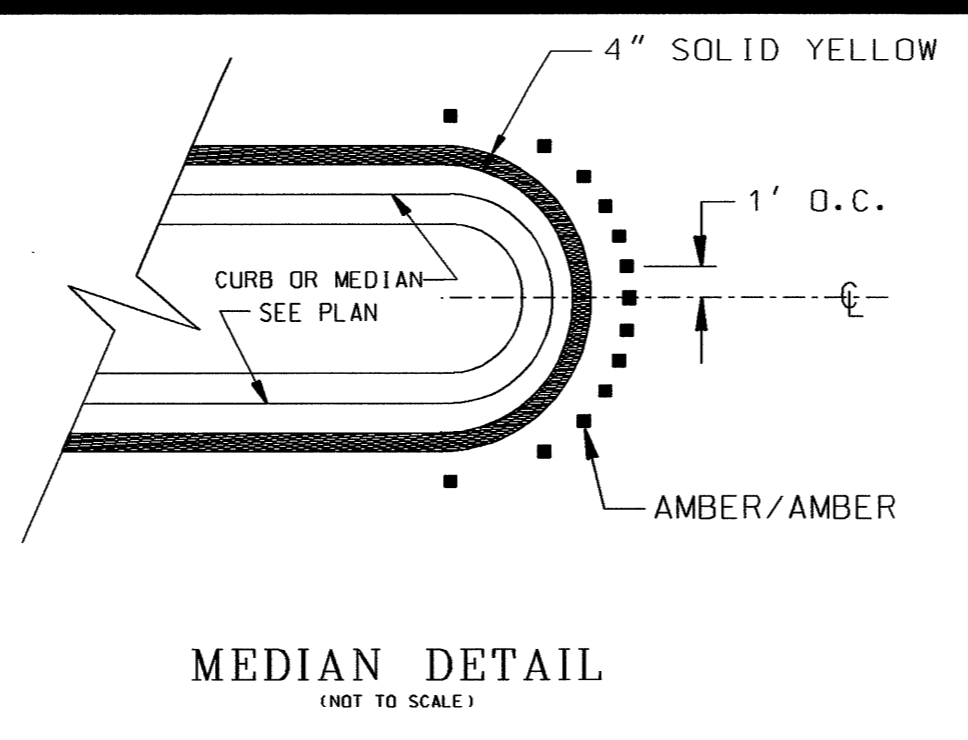
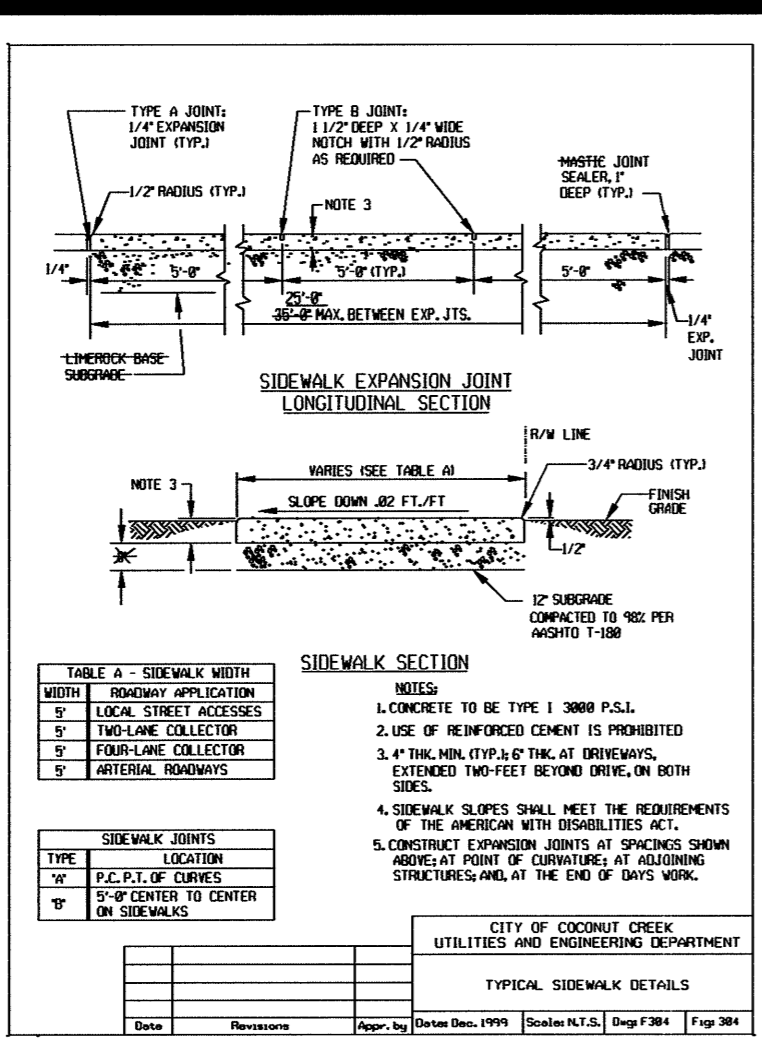
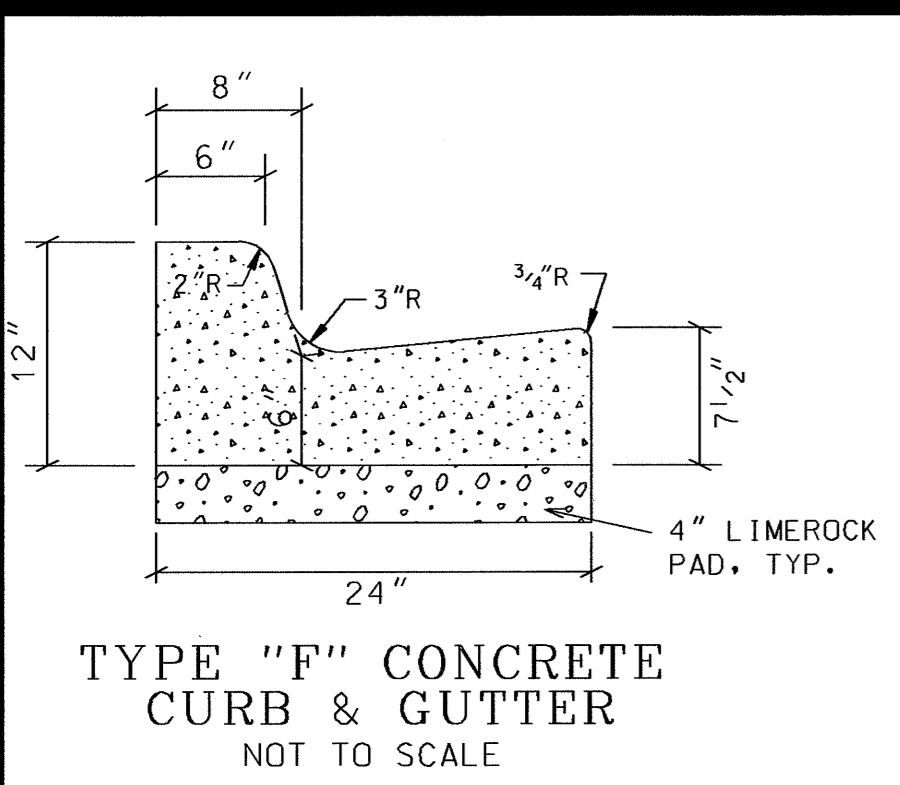


BCED REF#: \_\_\_\_\_



**GENERAL NOTES:**  
 1. LIMEROCK CURB TESTS SHALL BE REQUIRED AT A MINIMUM BY ONE PER 500 LBS. OF CURB AND FORWARDED TO AN APPROVED TESTING LABORATORY AT THE CONTRACTOR'S EXPENSE.  
 2. CURB SHALL BE PROVED MECHANICALLY AND CONSTRUCTED IN ACCORDANCE WITH THIS DETAIL.  
 3. CURB JOINTS SHALL BE TOoled OR CUT EVERY 100 FEET.  
 4. ALL CURB RIBS SHALL BE UNFILLED WITH 2" MINIMUM OF PLASTER.

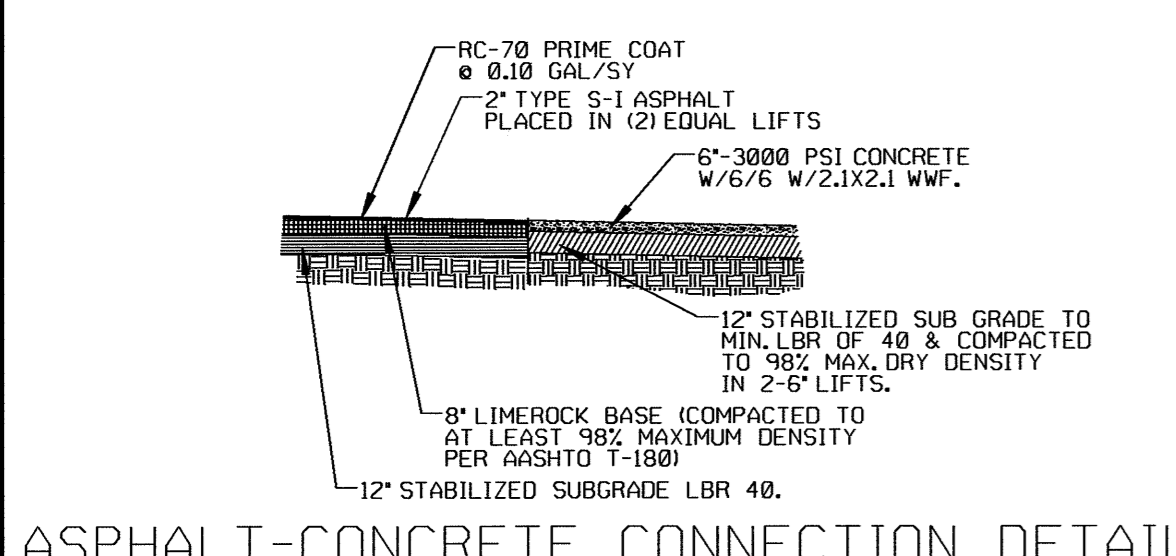
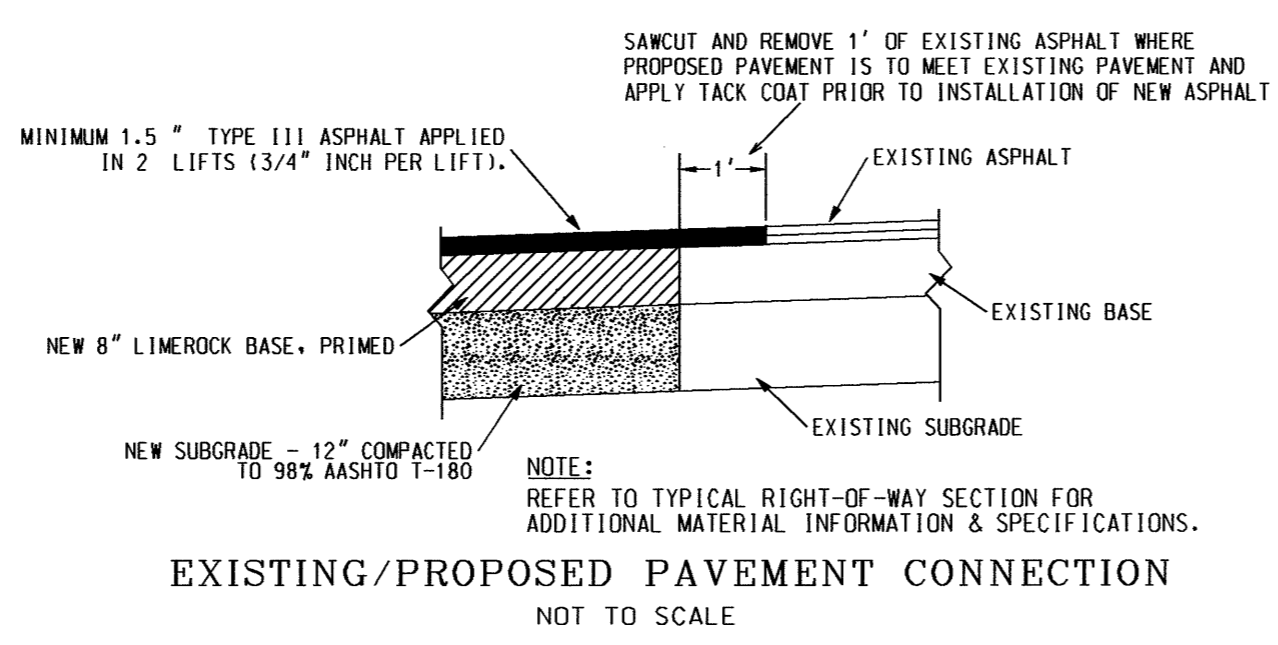
**TABLE A - SIDEWALK WIDTH**

DESIGN	ROADWAY APPLICATION	WIDTH
1	LOCAL STREET ACCESS	5'
2	LOCAL STREET	5'
3	FOUR-LANE COLLECTOR	5'
4	ARTERIAL	5'

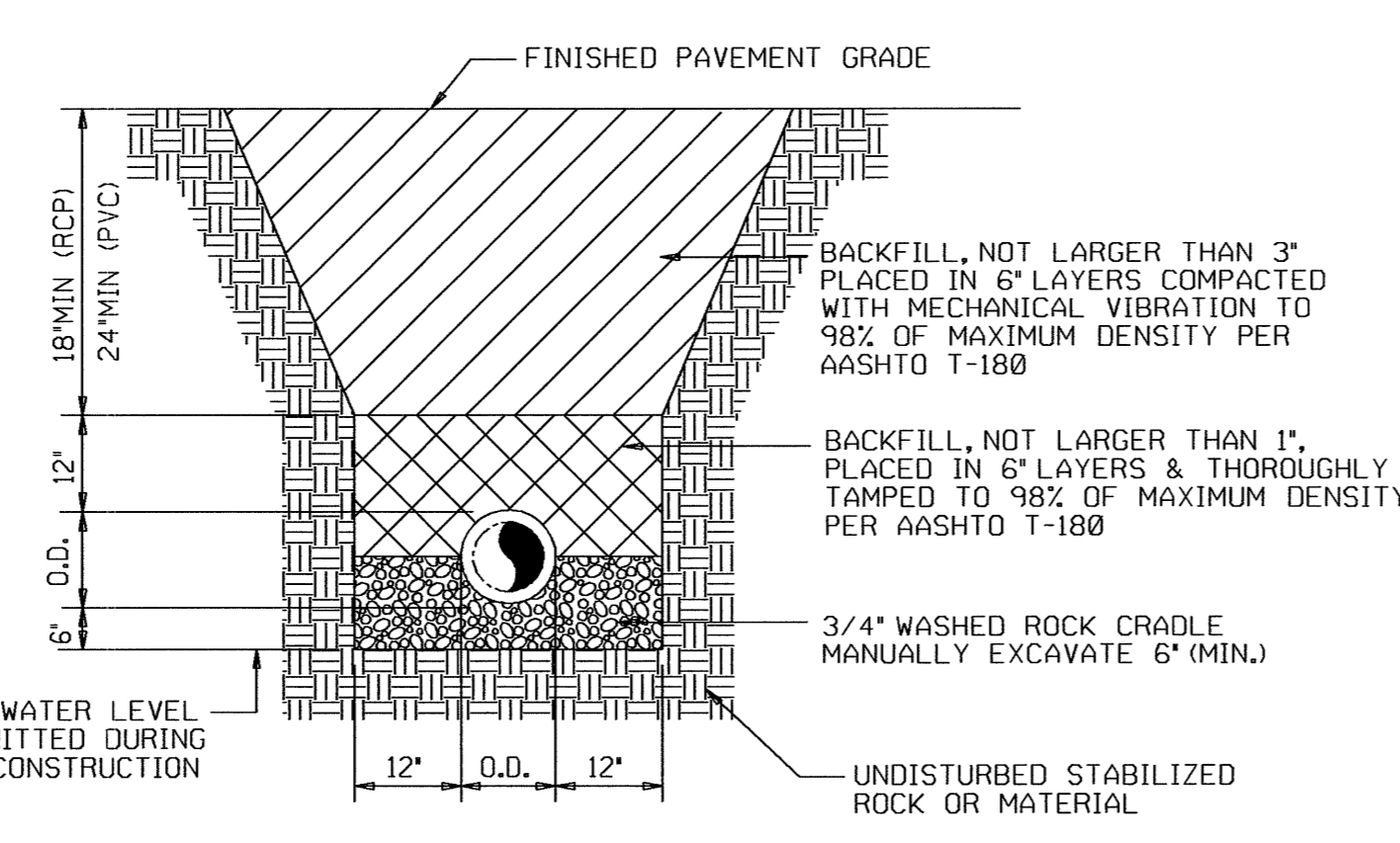
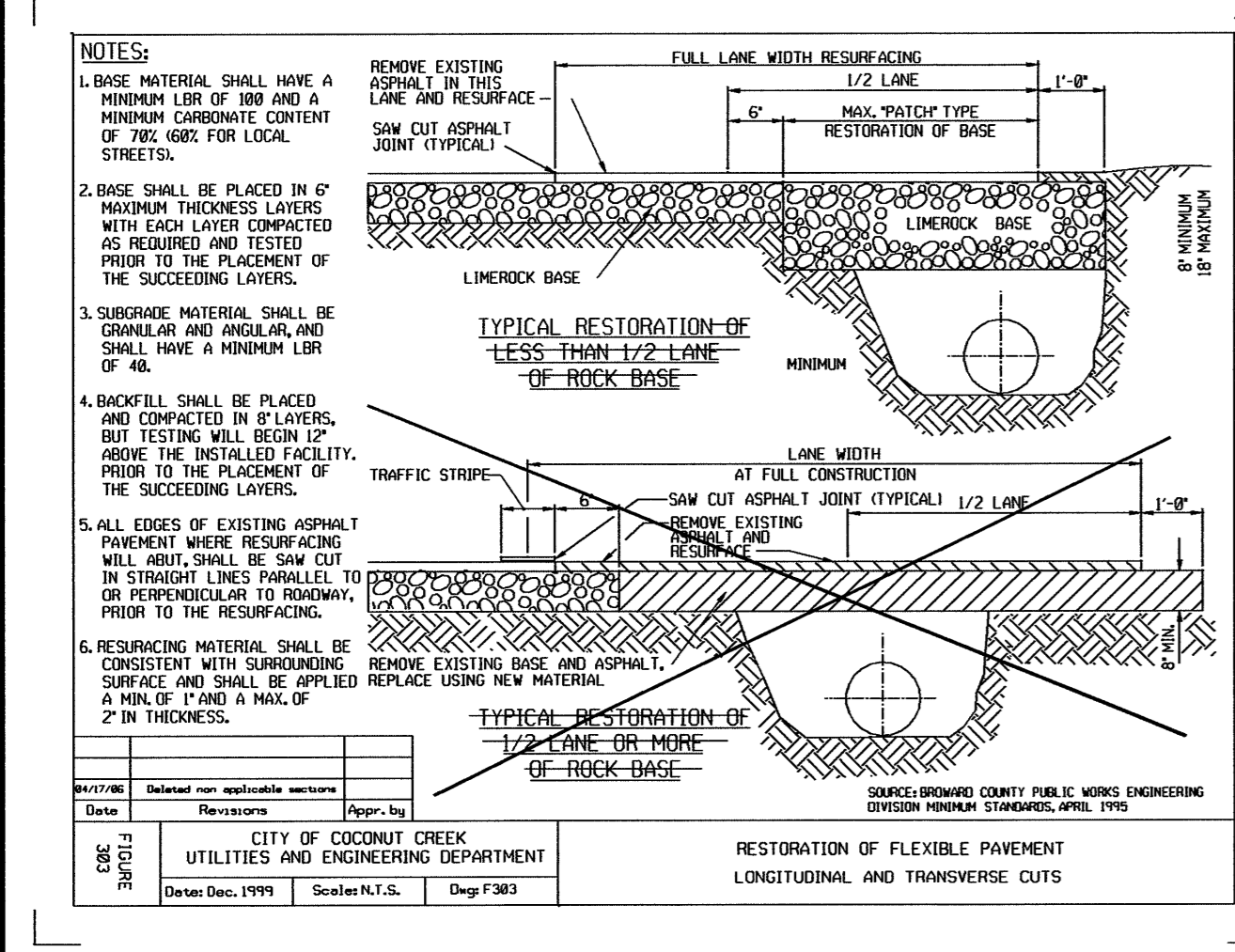
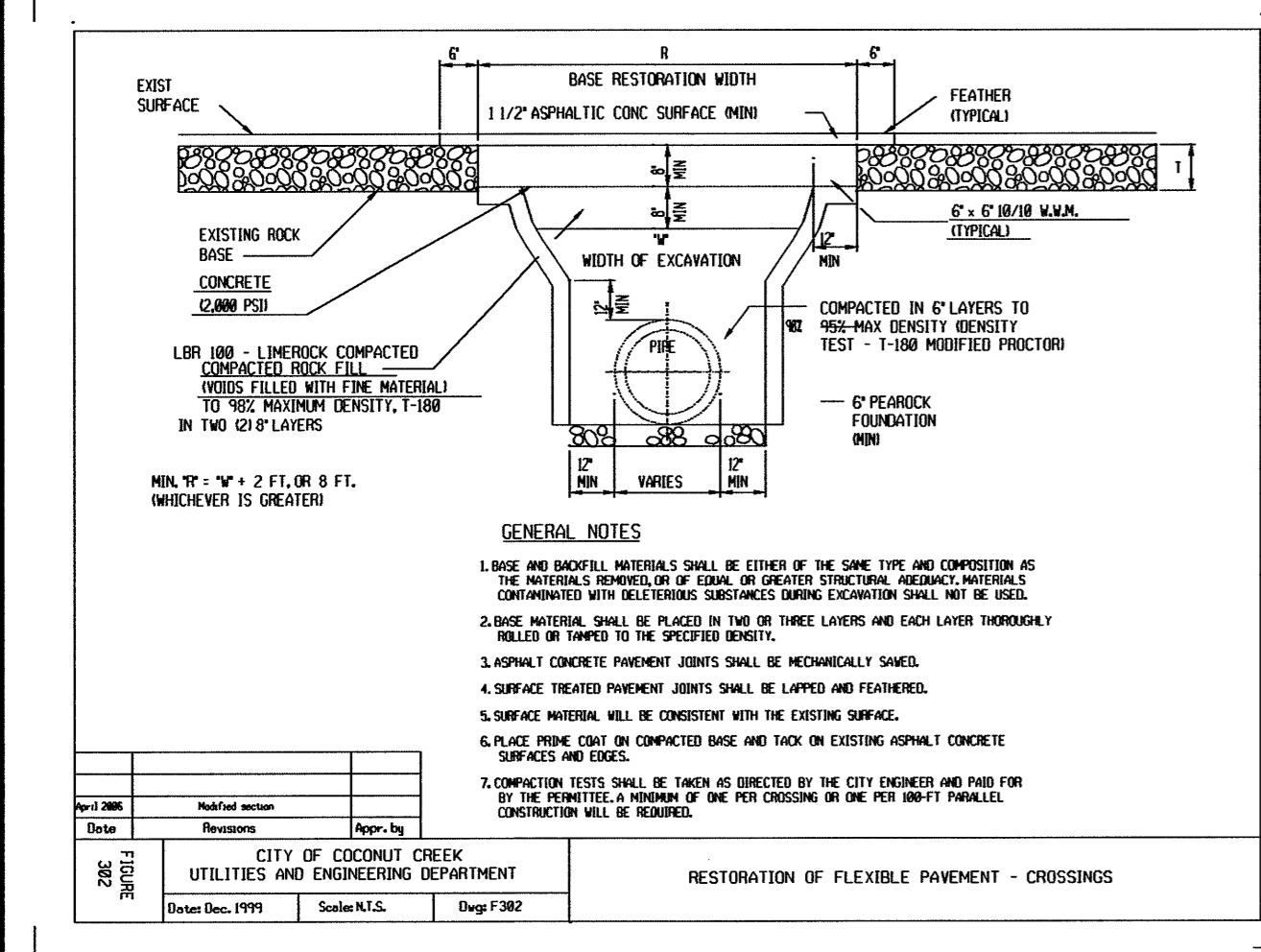
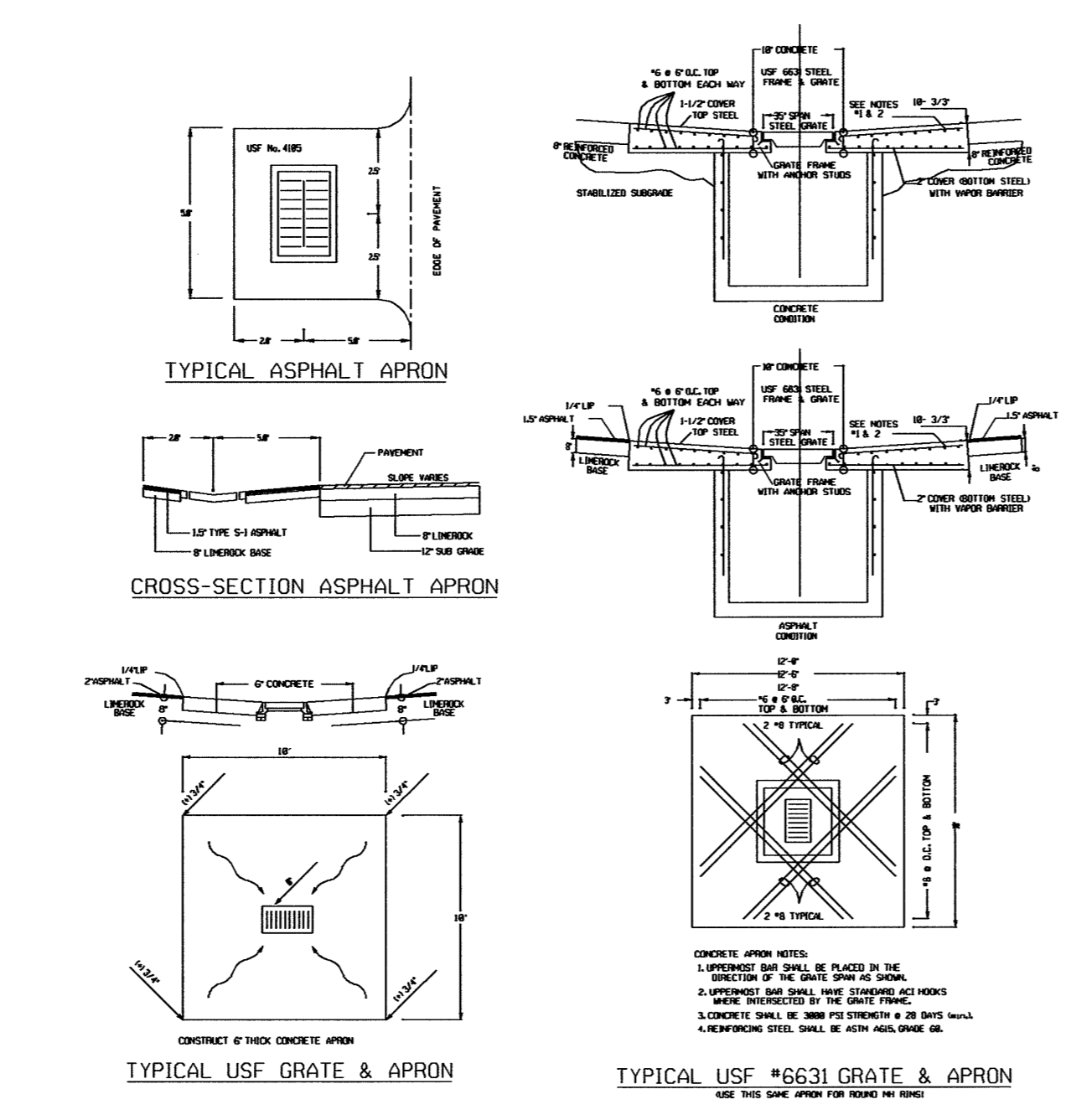
**SIDEWALK JOINTS**

TYPE	LOCATION
1	AT ALL CURB ENDS
2	AT ALL CURB CHANGES
3	AT ALL CURB TO CENTER OR SIDEWALK

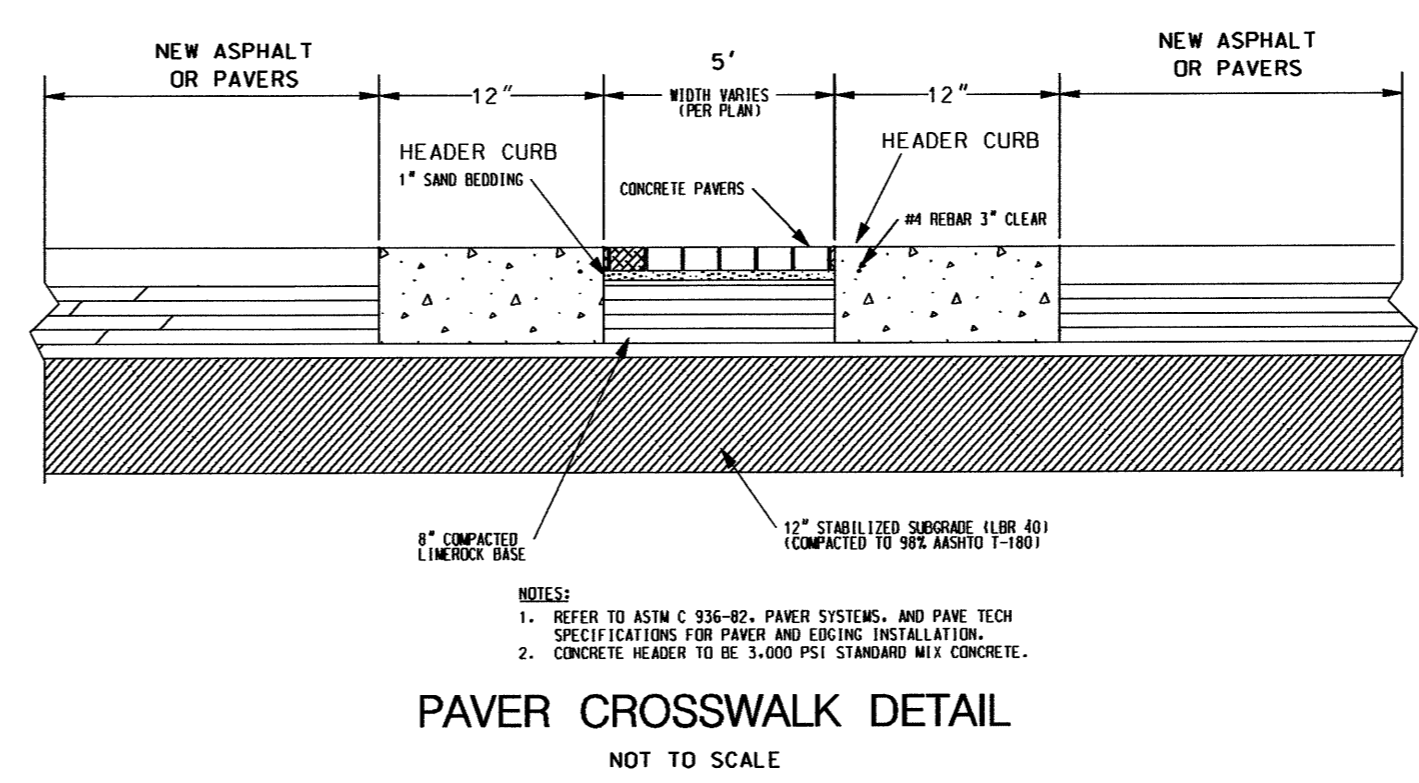
**CITY OF COCONUT CREEK UTILITIES AND ENGINEERING DEPARTMENT**  
 TYPICAL SIDEWALK DETAILS  
 Date: \_\_\_\_\_ Revisions: \_\_\_\_\_ Appr. by: \_\_\_\_\_ Scale: N.T.S. Drawn by: \_\_\_\_\_ Date: \_\_\_\_\_



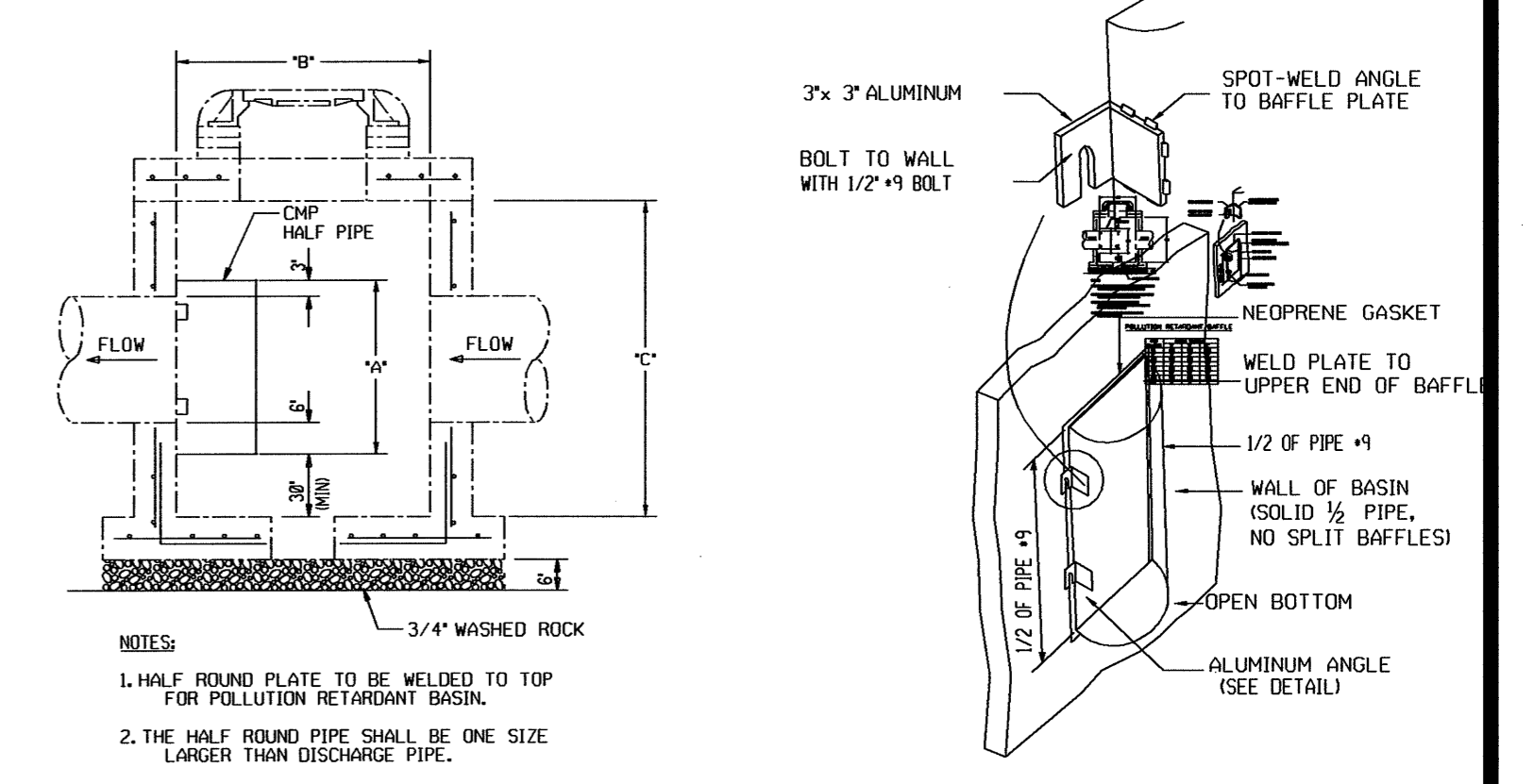
ASPHALT-CONCRETE CONNECTION DETAIL



TYPICAL TRENCH DETAIL



**CITY OF COCONUT CREEK PERMIT SET MUST BE ON SITE AT ALL TIMES DURING CONSTRUCTION. NOTICE INSPECTION REQUIRED.**  
 48 HRS. PRIOR TO COMMENCING ANY WORK IN THE PUBLIC RIGHT OF WAY CONTACT THE CITY OF COCONUT CREEK ENGINEERING DEPARTMENT FOR INSPECTION.  
 NOTE: APPROVAL OF THIS PLAN DOES NOT CONSTITUTE A PERMIT FOR CONSTRUCTION. A PERMIT FOR CONSTRUCTION MUST BE OBTAINED FROM THE CITY OF COCONUT CREEK ENGINEERING DEPARTMENT PRIOR TO COMMENCING CONSTRUCTION IN THE PUBLIC RIGHT OF WAY.



**NOTES:**  
 1. HALF ROUND PIPE TO BE WELDED TO TOP FOR POLLUTION RETARDANT BASIN.  
 2. THE HALF ROUND PIPE SHALL BE ONE SIZE LARGER THAN DISCHARGE PIPE.  
 3. FOR STRUCTURE'S CONSTRUCTION DIMENSIONS AND SPEC'S. SEE PRECAST CATCH BASIN DETAIL.  
 4. WEEP HOLES ARE NOT PERMITTED IN WELLFIELD AREAS.

**PIPE DIAMETER**

PIPE DIAMETER	14"	18"	24"	30"	36"	42"	48"	54"	60"
BAFFLE SCHEDULE	27"	30"	36"	42"	48"	54"	60"	66"	72"

48 HOURS BEFORE DIGGING  
**CALL SUNSHINE**  
 TOLL FREE  
 1-800-432-4770  
 UNDERGROUND UTILITIES NOTIFICATION  
 CENTER OF FLORIDA

PROJECT: <b>LONG PINES</b>	TITLE: <b>PAVING, GRADING, &amp; DRAINAGE DETAILS</b>	SHEET NUMBER: <b>PD5</b>
DATE: <b>02/28/12</b>	REVISIONS:	OF: <b>6</b>
SCALE: <b>NA</b>	DATE: <b>10/15/12</b>	COMMENTS: <b>UPDATE DETAILS</b>
DRAWN BY: <b>HEJ</b>	DATE: <b>03/05/13</b>	COMMENTS: <b>UPDATE DETAILS</b>
CHECKED BY: <b>LL</b>		
APPROVED BY: <b>HEJ</b>		
PROJECT #: <b>10-0180</b>		

**AJ HYDRO ENGINEERING, INC.**  
 5932 NW 73RD COURT  
 PARKLAND, FL 33067  
 TEL (954) 344-7866  
 FAX (954) 344-7866