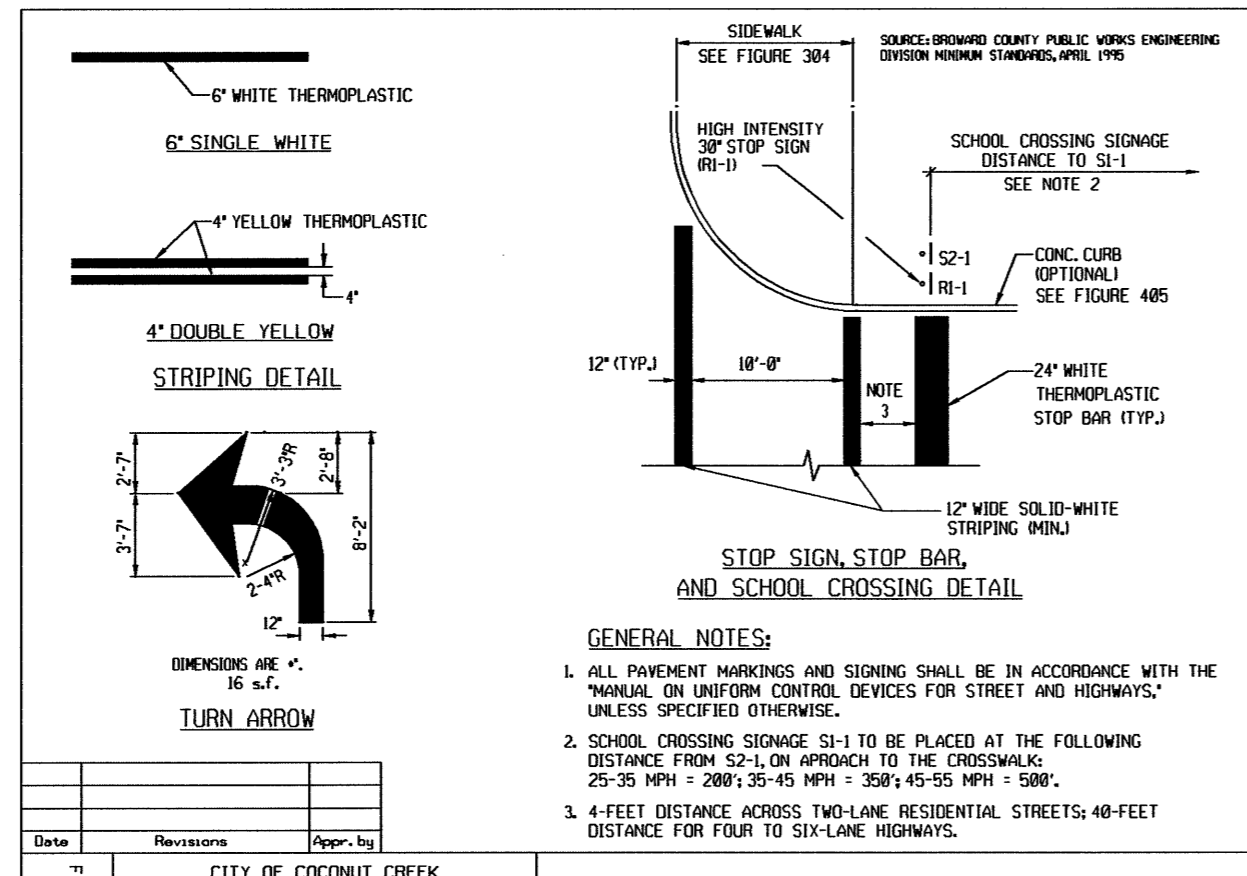


GENERAL NOTES:

1. ALL PAVEMENT MARKINGS AND SIGNING SHALL BE IN ACCORDANCE WITH THE "MANUAL ON UNIFORM TRAFFIC CONTROL DEVICES FOR STREET AND HIGHWAYS" UNLESS SPECIFIED OTHERWISE.
2. SEE FIGURE 301 FOR ADDITIONAL SIGNAGE, MARKINGS AND CROSSWALK DETAILS.
3. 4-FOOT DISTANCE ACROSS TWO-LANE RESIDENTIAL STREETS; 40-FOOT DISTANCE FOR FOUR TO SIX-LANE HIGHWAY.
4. DOUBLE-SIGNING SHALL BE INSTALLED BY WORK ORDER REQUEST.

Date	Revisions	Appr. by	Date	Scale	Sheet No.	Drawn	Checked	Appr. by



GENERAL NOTES:

1. ALL PAVEMENT MARKINGS AND SIGNING SHALL BE IN ACCORDANCE WITH THE "MANUAL ON UNIFORM TRAFFIC CONTROL DEVICES FOR STREET AND HIGHWAYS" UNLESS SPECIFIED OTHERWISE.
2. SCHOOL CROSSING SIGNAGE (S-1) TO BE PLACED AT THE FOLLOWING DISTANCE FROM S-2-1 ON APPROACH TO THE CROSSING: 25-75 MPH = 200-250 FT; 30-45 MPH = 200-250 FT; 50-55 MPH = 300-350 FT.
3. 4-FOOT DISTANCE ACROSS TWO-LANE RESIDENTIAL STREETS; 40-FOOT DISTANCE FOR FOUR TO SIX-LANE HIGHWAYS.

Date	Revisions	Appr. by	Date	Scale	Sheet No.	Drawn	Checked	Appr. by

INSPECTIONS:

THE CONTRACTOR SHALL NOTIFY THE CITY OF COCONUT CREEK AT LEAST 48 HOURS PRIOR TO THE BEGINNING OF CONSTRUCTION AND PRIOR TO THE INSPECTION OF THE FOLLOWING ITEMS:

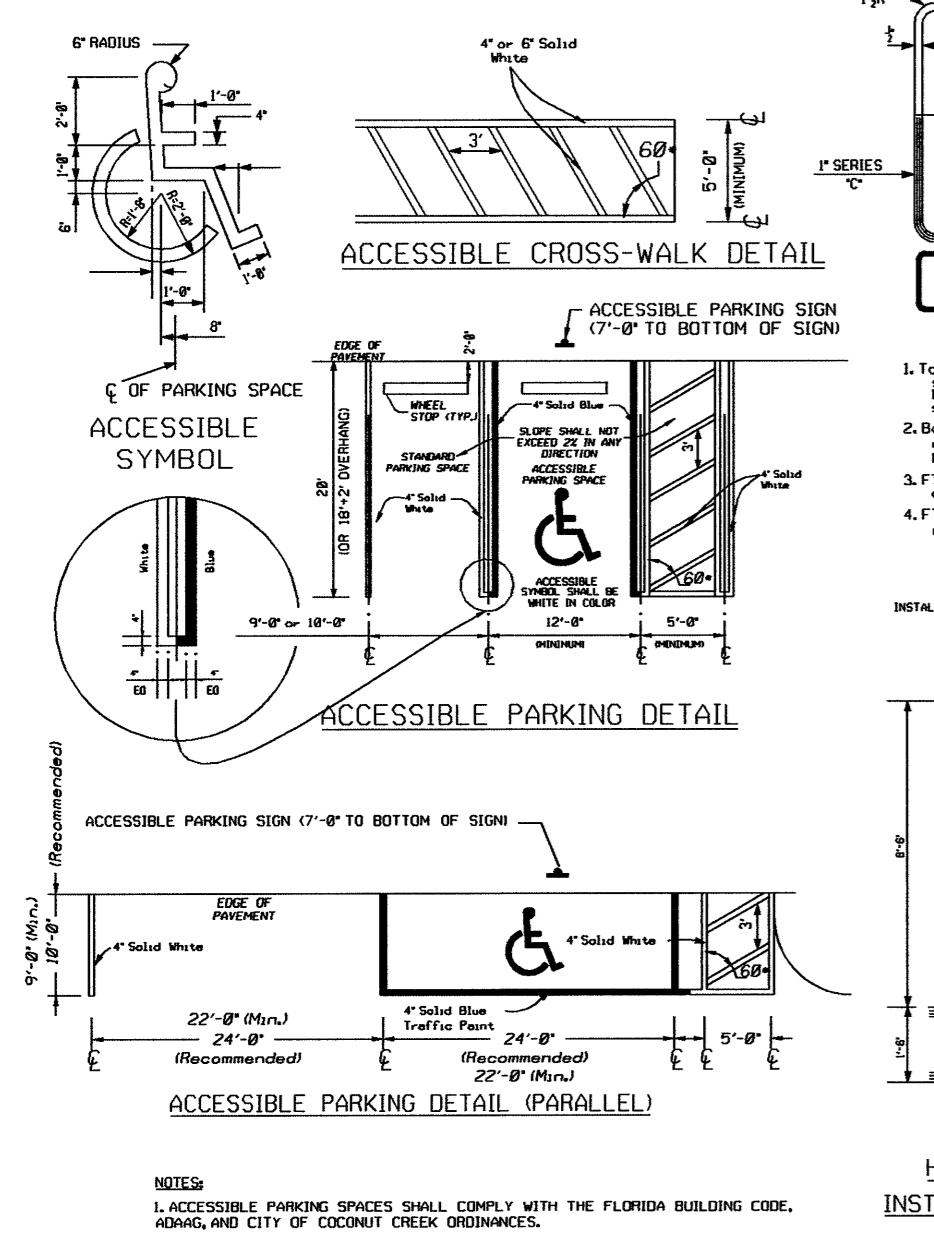
1. CLEARING & FILLING.
2. STORM DRAINAGE LAMPING.
3. SUBGRADE (DENSITY TESTS SHALL BE APPROVED PRIOR TO THE PLACEMENT OF LIMEROCK).
4. LIMEROCK BASE (DENSITY TESTS AND AS-BUILTS MUST BE SUBMITTED WITH A CERTIFIED LETTER FROM THE ENGINEER OF RECORD INDICATING THEY CONFORM WITH THE APPROVED PLAN PRIOR TO THE PLACEMENT OF ASPHALT).
5. ASPHALTIC CONCRETE.
6. FINAL.
7. THE CONTRACTOR SHALL NOTIFY THE CITY AND THE ENGINEER OF RECORD AT LEAST 48 HOURS PRIOR TO BEGINNING OF CONSTRUCTION AND IN ADVANCE OF REQUIRED INSPECTIONS. TESTING WILL BE REQUIRED FOR THE FOLLOWING TASKS:
 - A. STORM DRAINAGE
 - B. WATER DISTRIBUTION SYSTEM
 - C. SANITARY SEWER SYSTEM
 - D. ROAD SUBGRADE
 - E. FINISHED LIMEROCK BASE
 - F. ASPHALTIC CONCRETE
 - G. PIPE BACKFILL
8. ALL TESTING WILL BE WITNESSED BY THE CITY OF COCONUT CREEK. THE ENGINEER OF RECORD WILL PROVIDE CONSTRUCTION OBSERVATION SERVICES AND COPY REPORTS TO THE CITY ENGINEER ON A BI-WEEKLY BASIS. FINAL SITE GRADING WORK SHALL BE INSPECTED BY THE ENGINEER OF RECORD. EMERGENCY SITUATIONS AND CHANGE OF PLANS SHALL BE REPORTED AT THE TIME OF EACH OCCURRENCE.

GENERAL PAVING, GRADING, & DRAINAGE NOTES

1. ALL CONSTRUCTION SHALL BE IN ACCORDANCE WITH THE LATEST FLORIDA D.O.T. STANDARD SPECIFICATIONS FOR ROAD AND BRIDGE CONSTRUCTION WITH THE STANDARD SPECIFICATIONS OF THE CITY/COUNTY HAVING JURISDICTION AND WITH BROWARD COUNTY ENGINEERING DIVISION "MINIMUM STANDARDS".
2. ALL APPLICABLE CITY/COUNTY PERMITS MUST BE OBTAINED PRIOR TO COMMENCEMENT OF CONSTRUCTION.
3. ALL WORK SHALL BE DONE IN A GOOD WORKMANLIKE MANNER. MATERIAL INSTALLATION SHALL BE IN ACCORDANCE WITH MANUFACTURER'S RECOMMENDATIONS.
4. SHOP DRAWINGS OF ALL MATERIALS BEING USED SHALL BE SUBMITTED TO THE ENGINEER OF RECORD AND THE CITY AND/OR COUNTY FOR APPROVAL PRIOR TO COMMENCEMENT OF CONSTRUCTION.
5. CONTRACTOR SHALL NOTIFY THE CITY AND/OR COUNTY AND THE ENGINEER OF RECORD A MINIMUM OF 48 HOURS PRIOR TO COMMENCING WORK IN THE RIGHT OF WAY.
6. CONTRACTOR TO BE TOTALLY RESPONSIBLE FOR MAINTENANCE OF TRAFFIC AND SAFETY OF MOTORISTS AND PEDESTRIANS USING THIS SITE, ADJACENT STREET, ROADWAYS AND WATERWAYS DURING CONSTRUCTION. MAINTENANCE AND SAFETY PROCEDURES SHALL CONFORM TO M.U.T.C.D. CONTRACTOR TO PROVIDE M.O.T. PLAN TO CITY OF COCONUT CREEK PRIOR TO PRECONSTRUCTION MEETING.
7. ALL ELEVATIONS REFER TO NATIONAL GEODETIC VERTICAL DATUM OF 1929.
8. THE EXISTING ELEVATIONS SHOWN ARE FOR THE PURPOSE OF INDICATING THE APPROXIMATE GROUND ELEVATION AT THE LOCATION SHOWN AND IN NO WAY REFLECT SURFACE CONDITIONS OR SUBSURFACE SOIL CONDITIONS.
9. THE LOCATIONS OF EXISTING UTILITIES SHOWN ON THE APPROVED PLANS ARE TO BE VERIFIED IN THE FIELD BY THE CONTRACTOR. ANY DISCREPANCIES SHALL BE BROUGHT TO THE ATTENTION OF THE CITY ENGINEER AND THE ENGINEER OF RECORD. AT NO TIME IS THE CONTRACTOR TO TAMPER WITH EXISTING UTILITIES, EXCEPT AS NOTED ON THE PLANS.
10. THE CONTRACTOR SHALL BE RESPONSIBLE, AT ALL TIMES THROUGHOUT THE DURATION OF CONSTRUCTION, FOR THE PROTECTION OF EXISTING AND NEWLY INSTALLED UTILITIES FROM DAMAGE OR DISRUPTION OF SERVICE.
11. ALL MUCK, YIELDING, & DELETERIOUS MATERIAL WITHIN ROAD RIGHT OF WAYS, PAVED AREAS, SIDEWALK, BUILDING PADS, DRAINAGE AND UTILITY TRENCHES SHALL BE REMOVED COMPLETELY AND REPLACED WITH CLEAN FILL MATERIAL IN 8" LAYERS COMPACTED TO 100% MAXIMUM DENSITY AS DETERMINED BY A.A.S.H.T.O. T-99C.
12. BACKFILL AND BEDDING MATERIAL SHALL BE NON-COHESIVE AND NON-PLASTIC, FREE OF DEBRIS, LUMPS, CLOUDS, WOOD, BROKEN PAVEMENT OR ANY ORGANIC OR UNSTABLE MATERIAL. NO ROCKS LARGER THAN 6" SHALL BE PERMITTED AS BACKFILL OR BEDDING.
13. RECORD DRAWINGS, CERTIFIED BY A PROFESSIONAL SURVEYOR REGISTERED IN THE STATE OF FLORIDA, SHALL BE SUBMITTED TO THE ENGINEER OF RECORD, CITY ENGINEER, AND COUNTY ENGINEER PRIOR TO FINAL ACCEPTANCE OF THE SYSTEM.
14. CONTRACTOR SHALL CONTACT SUNSHINE ONE CALL (1-800-432-4770) & ALL OTHER UTILITY COMPANIES PRIOR TO CONSTRUCTION. SUNSHINE REGISTRATION NUMBER MUST BE SHOWN ON DRAWINGS PRIOR TO START OF CONSTRUCTION IN RIGHT-OF-WAY AND PRIOR TO PERMIT ISSUANCE BY CITY. CONTRACTOR SHALL BE RESPONSIBLE TO PROTECT ALL EXISTING UTILITIES & SHALL REPAIR DAMAGED UTILITIES AT HIS EXPENSE.
15. TURBIDITY BARRIERS MUST BE INSTALLED AT ALL OUTFALL LOCATIONS PRIOR TO PIPE CONNECTION TO RECEIVING WATERS. TURBIDITY BARRIERS MUST REMAIN IN PLACE UNTIL CONSTRUCTION IS COMPLETED. SOILS ARE STABILIZED AND VEGETATION HAS BEEN ESTABLISHED.
16. A PRE-CONSTRUCTION MEETING WILL BE REQUIRED WITH THE CITY OF COCONUT CREEK, THE RECORD ENGINEER, THE CONTRACTOR, & OTHER AGENCIES WITH JURISDICTION IN ATTENDANCE.

PAVING, GRADING, & DRAINAGE NOTES

1. ASPHALT PAVEMENT SHALL CONFORM TO APPLICABLE PARTS OF SECTION 300-339, AS DESCRIBED IN FLORIDA D.O.T. STANDARD SPECIFICATION FOR ROAD AND BRIDGE CONSTRUCTION. ASPHALT SHALL BE TYPE S-3, UNLESS OTHERWISE NOTED.
 2. LIMEROCK BASE CONSTRUCTION SHALL CONFORM TO APPLICABLE PARTS OF SECTION 200-230, AS DESCRIBED IN THE FLORIDA D.O.T. STANDARD SPECIFICATIONS FOR ROAD AND BRIDGE CONSTRUCTION. BASE COURSE SHALL BE COMPACTED TO A DENSITY NOT LESS THAN 98% OF THE MAXIMUM DENSITY AS DETERMINED BY A.A.S.H.T.O. T-180, AND HAVE A MINIMUM L.B.R. OF 100. PRIME COAT APPLICATION RATE AT 0.10 GAL/S.Y.
 3. COMPACTED SUBGRADE CONSTRUCTION SHALL CONFORM TO APPLICABLE PARTS OF SECTION 120, AS DESCRIBED IN FLORIDA D.O.T. STANDARD SPECIFICATIONS FOR ROAD AND BRIDGE CONSTRUCTION. COMPACTED SUBGRADE SHALL BE COMPACTED TO 100% MAXIMUM DENSITY AS DETERMINED BY A.A.S.H.T.O. T-99C.
 4. PROCTOR TESTS FOR SUBGRADE AND BASE MATERIALS SHALL BE SUPPLIED BY THE DEVELOPER PRIOR TO SCHEDULED DENSITY TESTS. DENSITY TESTS SHALL BE TAKEN A MINIMUM OF ONE PER 500 SQUARE YARDS. THE DEVELOPER SHALL PAY FOR ALL TESTING IF THE REQUIRED DENSITY IS ACHIEVED. THE CONTRACTOR SHALL BE LIABLE FOR ALL RETESTS FOR ANY FAILURES. TEST LOCATIONS SHALL BE DETERMINED BY THE CITY OF COCONUT CREEK ENGINEERING DEPARTMENT AND/OR THE "ENGINEER OF RECORD." BASE/ASPHALT CONSTRUCTION SHALL NOT COMMENCE UNTIL SATISFACTORY DENSITY TESTS HAVE BEEN REVIEWED BY THE CITY ENGINEER AND THE "ENGINEER OF RECORD."
 5. ALL UNDERGROUND UTILITIES SITUATED IN PAVED AREAS, INCLUDING BUT NOT LIMITED TO, SEWER AND WATER MAINS, GAS MAINS, ELECTRICAL DISTRIBUTION, TELEPHONE, ETC., SHALL BE COMPLETED AND APPROVED BEFORE ANY SUBGRADE WORK COMMENCES.
 6. CONCRETE FOR CURBS, GUTTERS, DRAINAGE INLETS, SIDEWALKS, ETC., SHALL BE CLASS 1, IN ACCORDANCE WITH FLORIDA D.O.T. STANDARD SPECIFICATIONS FOR ROAD AND BRIDGE CONSTRUCTION, SECTION 345. FOR CURB & GUTTER & VALLEY GUTTER PROVIDE 1/8"-1/4" CONTRACTION JOINTS AT 10' CENTERS. CONCRETE SHALL BE 3,000 PSI.
 7. PAVEMENT MARKINGS AND SIGNAGE SHALL CONFORM TO THE FLORIDA D.O.T. ROADWAY AND TRAFFIC DESIGN STANDARDS, THE MANUAL ON UNIFORM TRAFFIC CONTROL DEVICES, AND WITH THE CITY OF COCONUT CREEK, AND SHALL BE REFLECTORIZED THERMOPLASTIC.
 8. RADII REFER TO EDGE OF PAVEMENT UNLESS OTHERWISE NOTED.
 9. REFER TO CALCULATION SHEETS FOR SITE GEOMETRY.
 10. MATERIALS AND WORKMANSHIP IN CITY/COUNTY RIGHT-OF-WAYS SHALL MEET THE REQUIREMENTS OF THE CITY OF COCONUT CREEK & BROWARD COUNTY MINIMUM STANDARDS.
 11. NO ASPHALT SHALL BE PLACED IN CITY/COUNTY RIGHT-OF-WAYS UNTIL CERTIFIED AS-BUILTS OF THE FINISHED ROCK BASE HAVE BEEN SUBMITTED TO AND APPROVED BY THE RECORD ENGINEER & THE CITY OR COUNTY HAVING JURISDICTION.
 12. LIMEROCK SHALL BE MIAMI LIMEROCK HAVING A MINIMUM 70% OF CARBONATES IN COUNTY RIGHT OF WAYS, & 70% OF CARBONATES IN COUNTY RIGHT OF WAYS. LIQUID LIMIT LESS THAN 35. PLASTICITY INDEX LESS THAN 6 AND LBR 100.
 13. ALL DRAINAGE PIPE SHALL BE REINFORCED CONCRETE PIPE UNLESS WRITTEN APPROVAL IS OBTAINED FROM THE ENGINEER OF RECORD & THE CITY OF COCONUT CREEK CITY ENGINEER.
 14. ALL TRENCHING, PIPE LAYING, BACKFILL, LAMPING, ETC. MUST BE IN CONFORMANCE WITH THE CITY OF COCONUT CREEK & BROWARD COUNTY MINIMUM STANDARDS. ADDITIONALLY, ALL PIPE MUST BE BACKFILLED IN NO GREATER THAN 12" LIFTS AND EACH LIFT TAMPED & DENSITY TESTED, UNLESS OTHERWISE APPROVED BY THE RECORD ENGINEER AND THE AGENCY HAVING JURISDICTION.
 15. AS-BUILT PIPE INVERTS AND ROADWAY GRADING WILL BE STRICTLY ENFORCED.
 16. PRECAST CONCRETE MANHOLES/INLETS SHALL CONFORM TO THE REQUIREMENTS OF ASTM C-478-70, LATEST REVISIONS. ALL PRE-CAST MANHOLES/INLETS SHALL BEAR THE STAMP OF A CERTIFIED ENGINEERING TESTING LABORATORY, SIGNED AND DATED, CERTIFYING THAT THEY MEET THE REQUIREMENTS OF ASTM C-478 FOR CONCRETE STRENGTH, STEEL REINFORCEMENT AREA AND PLACEMENT, AND APPEARANCE WHEN MANUFACTURED. MANHOLES/INLETS MUST BE INSPECTED BY THE CITY OF COCONUT CREEK BEFORE UNLOADING.
 17. CONCRETE FOR PRECAST MANHOLES/INLETS OR CAST IN PLACE MANHOLES/INLETS SHALL ATTAIN A MINIMUM COMPRESSIVE STRENGTH OF 4000 P.S.I. AT 28 DAYS.
 18. MINIMUM WALL AND BASE THICKNESS FOR PRECAST MANHOLES SHALL BE 8 INCHES.
 19. REINFORCING STEEL FOR MANHOLES/INLETS SHALL CONFORM TO THE REQUIREMENTS OF ASTM A-615 AND A-305, LATEST REVISIONS. SPLICES SHALL HAVE A MINIMUM LAP OF 24 BAR DIAMETERS. MINIMUM COVER OVER REINFORCING STEEL SHALL BE 3 INCHES.
 20. ALL OPENINGS IN PRECAST MANHOLES/INLETS SHALL BE CAST AT TIME OF MANUFACTURE.
 21. PRECAST MANHOLE/INLET SHOP DRAWINGS SHALL BE SUBMITTED TO THE RECORD ENGINEER & THE CITY OF COCONUT CREEK FOR APPROVAL PRIOR TO FABRICATION.
 22. MANHOLE/INLET LIDS SHALL BE CAPABLE OF WITHSTANDING AASHTO H-20 LOADING.
 23. IN ACCORDANCE WITH FLORIDA STATUTE 90-096 FS, KNOWN AS "THE FLORIDA TRENCH SAFETY ACT," CONTRACT BID DOCUMENTS MUST IDENTIFY ALL COSTS AND METHOD OF TRENCH EXCAVATIONS EXCEEDING (5) FIVE FEET IN DEPTH.
- THE CONTRACTOR IS RESPONSIBLE THAT ALL SHEETING AND SHORING INSTALLED COMPLY WITH OSHA EXCAVATION STANDARDS 29 C.F.R. 1926.650 SUBPART F. THE CONTRACTOR MUST EVALUATE GEOTECHNICAL DATA AND DESIGN THE TRENCH SAFETY SYSTEM ACCORDINGLY.
- THE CONTRACTOR MUST SUBMIT A LETTER, TO THE ENGINEER, ACKNOWLEDGING THAT HE HAS COMPLIED WITH THE FORGOING PRIOR TO CONSTRUCTION.

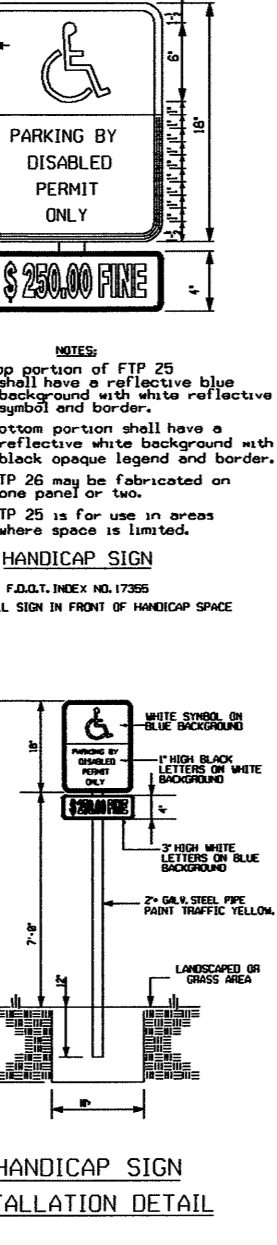


ACCESSIBLE CROSS-WALK DETAIL

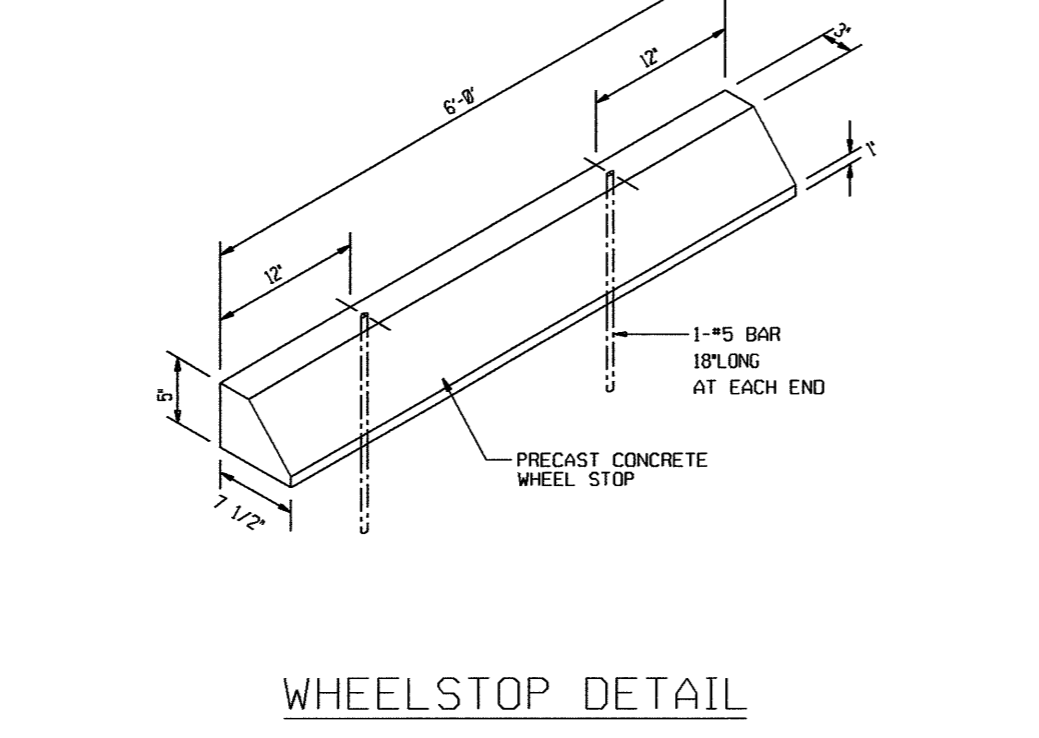
ACCESSIBLE PARKING SYMBOL

ACCESSIBLE PARKING DETAIL

ACCESSIBLE PARKING DETAIL (PARALLEL)

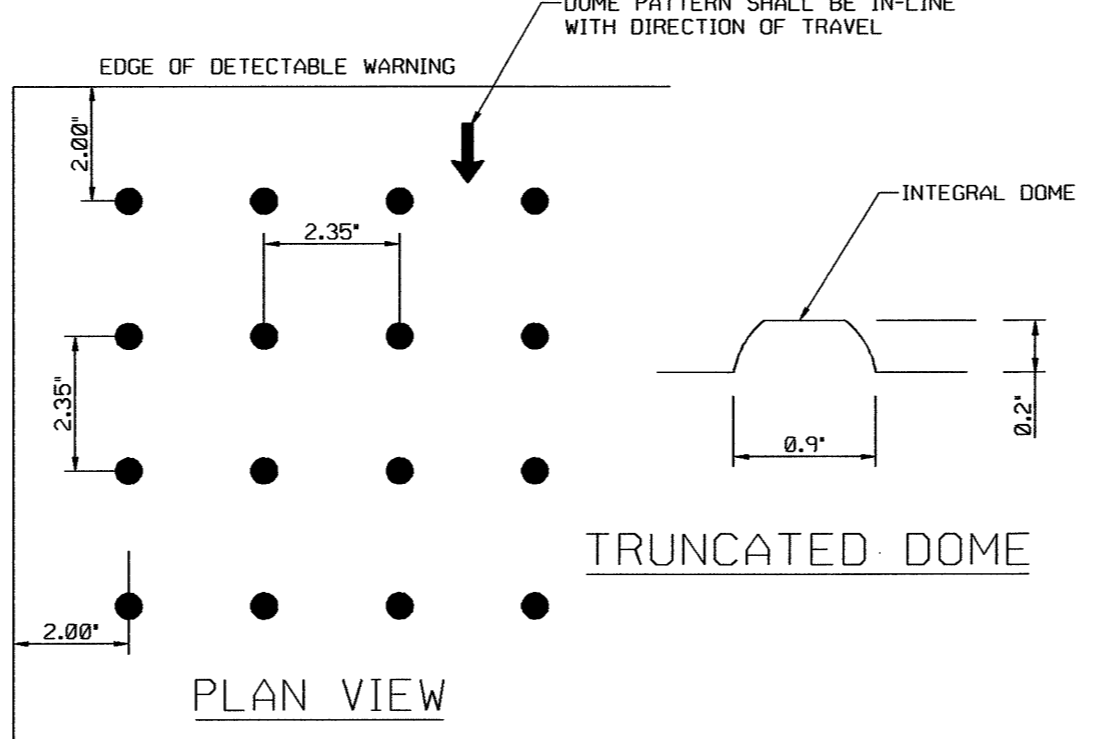


HANDICAP SIGN INSTALLATION DETAIL



WHEELSTOP DETAIL

NOTES:
1. CONCRETE STRENGTH SHALL BE 3,000 P.S.I.



TRUNCATED DOME

PLAN VIEW

NOTES:

1. DETECTABLE WARNING PER FOOT INDEX = 304
2. ALL SIDEWALK CURB RAMPS SHALL HAVE DETECTABLE WARNING SURFACES THAT EXTEND THE FULL WIDTH OF THE RAMP AND IN THE DIRECTION OF TRAVEL 24" INCHES FROM THE BACK OF CURB.

DETECTABLE WARNING DETAIL

CITY OF COCONUT CREEK PERMIT SET

MUST BE ON SITE AT ALL TIMES DURING CONSTRUCTION.

NOTICE INSPECTION REQUIRED

48 HRS. PRIOR TO COMMENCING ANY WORK IN THE PUBLIC RIGHT OF WAY CONTACT THE CITY OF COCONUT CREEK ENGINEERING DEPARTMENT FOR INSPECTION.

NOTICE

APPROVAL OF THIS PLAN DOES NOT CONSTITUTE A PERMIT FOR CONSTRUCTION. A PERMIT FOR CONSTRUCTION MUST BE OBTAINED FROM THE CITY OF COCONUT CREEK ENGINEERING DEPARTMENT PRIOR TO COMMENCING CONSTRUCTION IN THE PUBLIC RIGHT OF WAY.

48 HOURS BEFORE DIGGING CALL SUNSHINE

TOLL FREE 1-800-432-4770

UNDERGROUND UTILITIES NOTIFICATION CENTER OF FLORIDA

PROJECT: LONG PINES	TITLE: PAVING, GRADING, & DRAINAGE DETAILS & NOTES
DATE: 02/28/12	REVISIONS
SCALE: NA	DATE
DRAWN BY: H.E.J.	COMMENTS
CHECKED BY: H.E.J.	
APPROVED BY: H.E.J.	
PROJECT #: 10-0180	

AJ HYDRO ENGINEERING, INC.

5932 NW 73RD COURT
PARKLAND, FL 33067
TEL (954) 344-7866
FAX (954) 344-7866

SHEET NUMBER **PD6** OF **6**