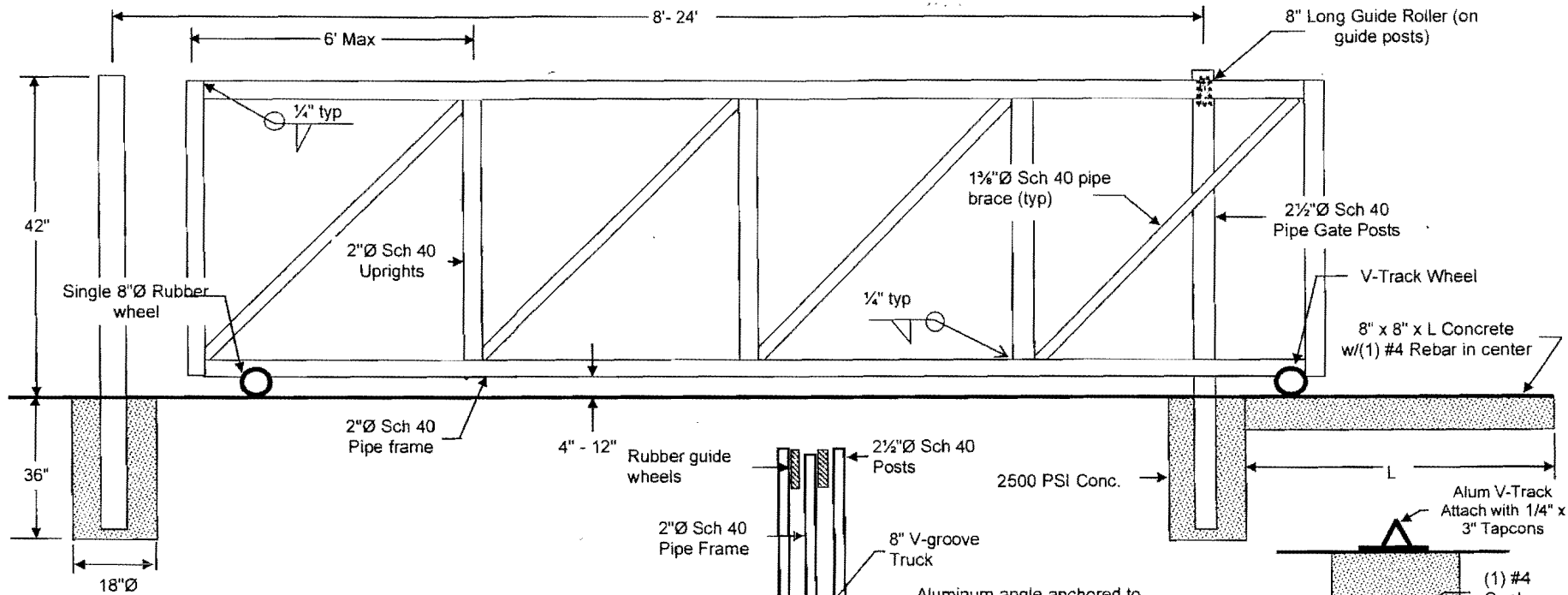
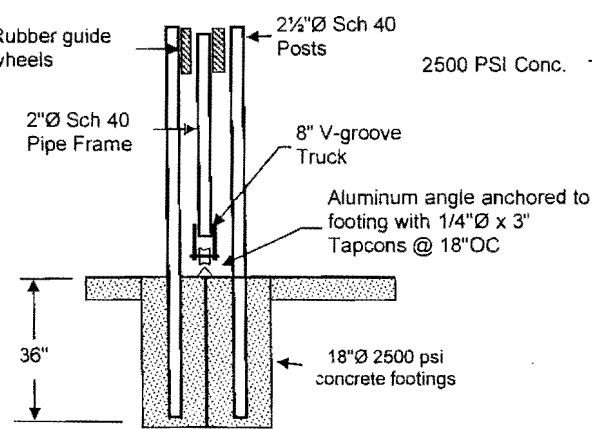


**Roll gate detail**  
(75 MPH design)



**Notes:**

1. Wheel assemblies shall be welded to gate frame 1/4" all surfaces.
2. Posts shall be 2 1/2"Ø Schedule 40 hot dipped galvanized.
3. Concrete footings shall be minimum of 18" diameter x 36" deep 3000 PSI Conc. Bell bottoms to 20".
4. Materials: Sch 40 Galvanized Iron Pipe. Weld all joints min. 1/4" all around.
6. Apply zinc based coating to all welds.
7. Design: 2007 FBC, (2009 supplement), & ASCE 7-05, wind speed 75 MPH, exp. C.
8. No changes allowed without written authorization from the engineer.
9. Copies of this drawing without an original signature and seal of the engineer are invalid.



**Guide Post Detail**

*William F. Flaherty*  
3/8/11

**FLAHERTY ASSOCIATES INC.**

William F. Flaherty, P.E. #25221  
1351 SE 4th Avenue  
Pompano Beach, FL 33060  
Certificate of Authorization #26223  
954-562-9300