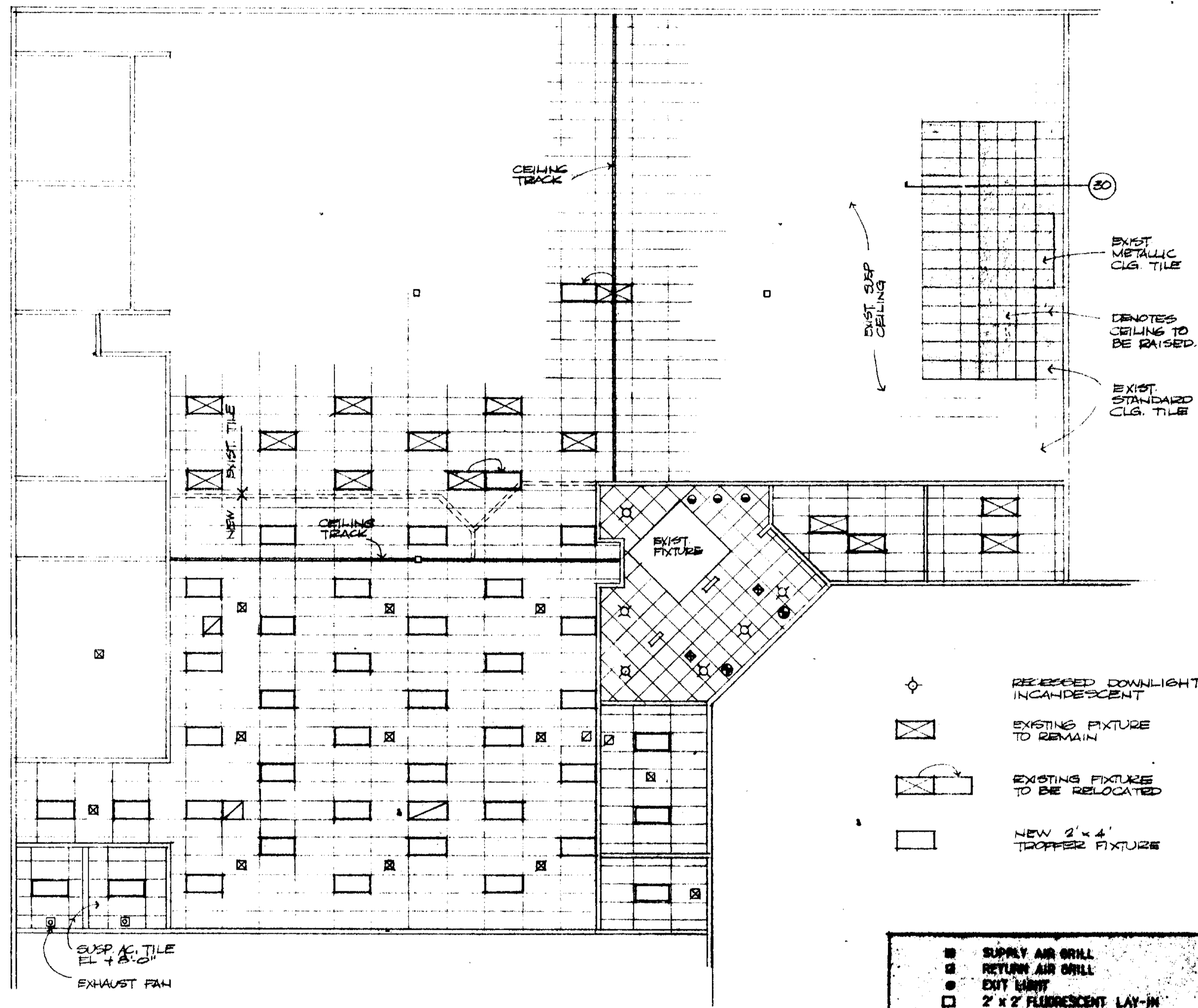
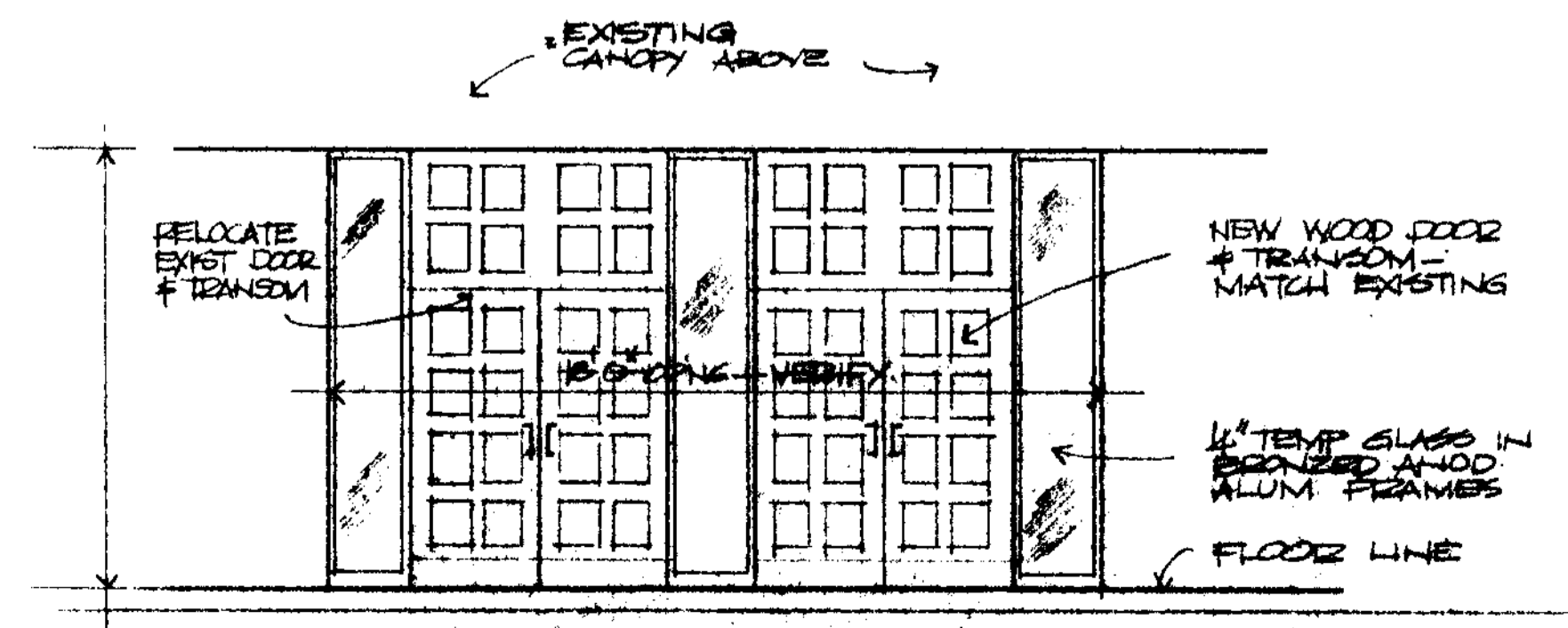


NOTE:
CONTRACTOR TO SUBMIT
DETAILED SHOP DRAWINGS
TO ARCHITECT FOR
REVIEW AND APPROVAL



- RECESSED DOWNLIGHT INCANDESCENT
- EXISTING FIXTURE TO REMAIN
- EXISTING FIXTURE TO BE RELOCATED
- NEW 2' x 4' TROFFER FIXTURE

- SUPPLY AIR GRILL
- RETURN AIR GRILL
- EXIT LIGHT
- 2' x 2' FLUORESCENT LAY-IN
- 2' x 4' FLUORESCENT LAY-IN
- 8'-8" FLUORESCENT INDUSTRIAL
- EMERGENCY BATTERY PACK - 300 WATT
- DUPLEX OUTLET
- FLUSH FLOOR MTD. DUPLEX OUTLET
- PROVIDE GROUND FAULT INTERRUPTER
- DUPLEX MTD ABOVE SHOW WINDOW
- JUNCTION BOX
- JUNCTION BOX ABOVE SHOW WINDOW
- TELEPHONE OUTLET
- FLUSH FLOOR MTD. TELEPHONE OUTLET



ELEVATION OF ENTRANCE

REVISIONS	BY
16 APRIL 90	
11 JULY 90	

WILLIAM HERRER - ARCHITECT
1150 SOUTH FEDERAL
SUITE 305
MIAMI BEACH, FL 33131
(305) 361-0886

Willy Herrero

CONSERVATIVE SYNAGOGUE
OF COCONUT CREEK
LYONS PLAZA
COCONUT CREEK, FL

DATE	12 MAR 90
SCALE	
FIG. NO.	12-00