

LANDSCAPE NOTES

All plant material shall meet or exceed standards for Florida No. 1, as presented in "Grades and Standards for Nursery Plants", Part I, 1963 and Part II, State of Florida, Department of Agriculture, Tallahassee, and any amendments, thereto.

All areas to receive sod shall be top rolled and dressed with sand.

All landscaped areas to receive Automatic Underground Sprinkler System with 14 day-24 hour time clock, to provide 100% coverage of all landscaped areas.

Trees shall be a minimum of 8 ft. in height immediately after planting and a minimum trunk diameter of 2 in. when measured at a point 4-1/2' above grade, unless noted otherwise.

All trees to be balled and burlapped - Plant in muck 12 in. thick around ball.

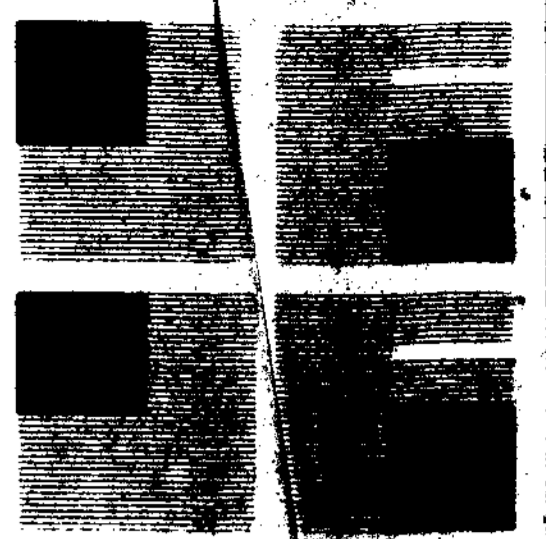
All trees and hedges to be mulched with 2 in. shredded cypress.

PLANTING LEGEND

- (A) QUERCUS VIRGINIA (LIVE OAK)
- (B) SWIETENIA MAHOGANI (MAHOGANY)
- (C) SABAL PALMETTO (SABAL PALM)
- (D) TABEBUIA AGENTIA (YELLOW TAB)
- (E) CONOCARPUS ERECTUS VARSERICEUS (SILVER BUTTWOOD)
- [Pattern] BITTER BLUE STRAIN OF SAINT AUGUSTINE SOD.
- [Pattern] FICUS BENJAMINA HEDGE - Min. 24" high after planting and 24" o.c.
- [Pattern] * CORCORDARAY (PAMPAS GRASS) - Min. 36" high.
- [Pattern] ASPARAGUS SPRINGERI (ASPARAGUS FERN) - Solid coverage with 2" shredded Cypress mulch.
- [Pattern] HIBISCUS ROSA - SINENSIS RED (RED HIBISCUS) - 3 gal. @ 2.5' o.c.

LANDSCAPE CALCULATIONS

LANDSCAPE AREA:	
ABUTTING PROPERTY	25,400 S.F.
DIVIDER MEDIAN	4,250 S.F.
INTERIOR LANDSCAPING	2,529 S.F.
TOTAL REQUIRED	32,179 S.F.
TOTAL PROVIDED	105,556 S.F.
TREES:	
TREES REQUIRED -	
ABUTTING PROPERTY	67 TREES
DIVIDER MEDIAN	22 TREES
PARKING SPACES (466/10)	46 TREES
OPEN SPACES	73 TREES
TOTAL REQUIRED	208 TREES
TOTAL PROVIDED	210 TREES



ARCHITECT
JEFF FALKANGER & ASSOCIATES INCORPORATED

614 SOUTH FEDERAL HWY
 FT LAUDERDALE, FL 33301
 (305)764-6575

[Handwritten signature]

5 NOV 84
 REVISIONS PER DDC

84149 23 OCT 84

LYONS PLAZA

CITY OF COCONUT CREEK
RECEIVED
 NOV 6 1984
 DEPARTMENT OF COMMUNITY DEVELOPMENT

COCONUT CREEK FL
LANDSCAPE PLAN

LANDSCAPE PLAN

1" = 40'-0"