

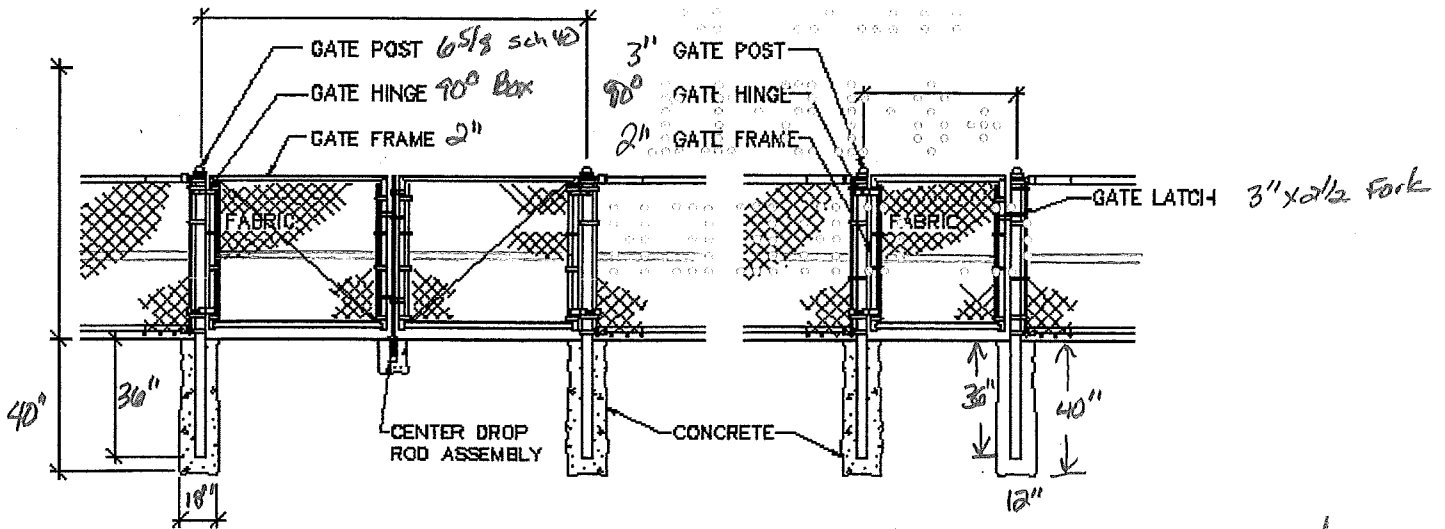
⊙ **TYPICAL BRACE UNIT DETAILS** Black Vinyl



AMERICAN  
 FENCE  
 ASSOCIATION

PROJECT: Tradewinds North maintenance Facility

SUBMITTED BY: BAUER CONSTRUCTION CORP.  
 DATE: 8/15/2011



**4' - 7' HIGH CHAIN LINK FENCE GATE DETAILS** *Black Vinyl*  
**ASSEMBLED W/ CORNER CONNECTIONS**

NOTES:

- 1. GATE FABRIC TO MATCH FENCE
- 2. FOR WELDED FRAMES OMIT TRUSS RODS



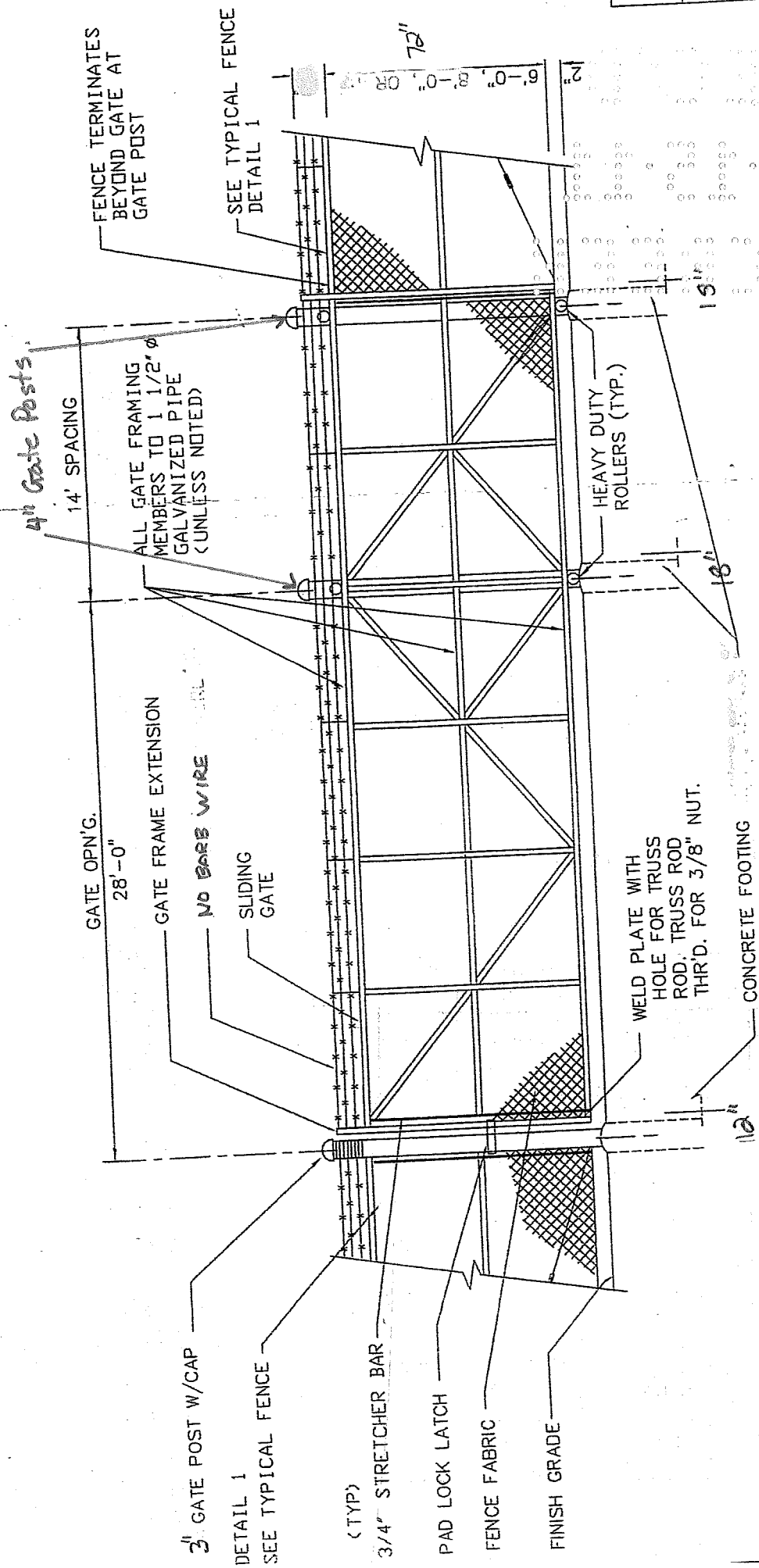
AMERICAN  
 FENCE  
 ASSOCIATION

PROJECT: *Tradewinds North maintenance Facility*

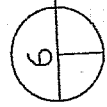
SUBMITTED BY: *Bauer Construction Corp*

DATE: *8/15/2011*

HO TC MI BC GA L CC GG GF V ST BT



TYPICAL 28' WIDE x 6', 8', OR 10' HIGH SLIDING GATE  
(REF. PAY ITEM No. 10&42)



N.T.S.