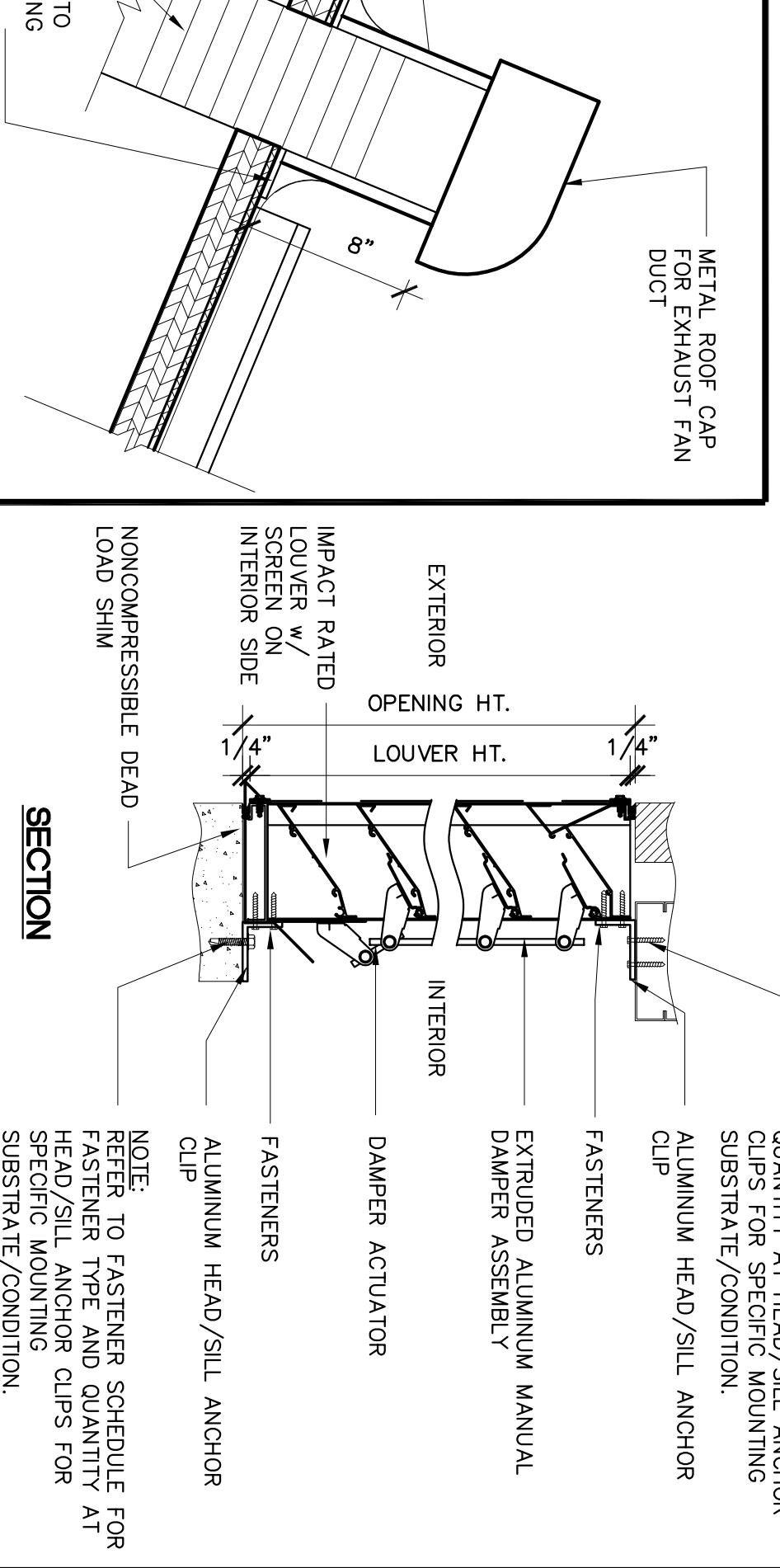
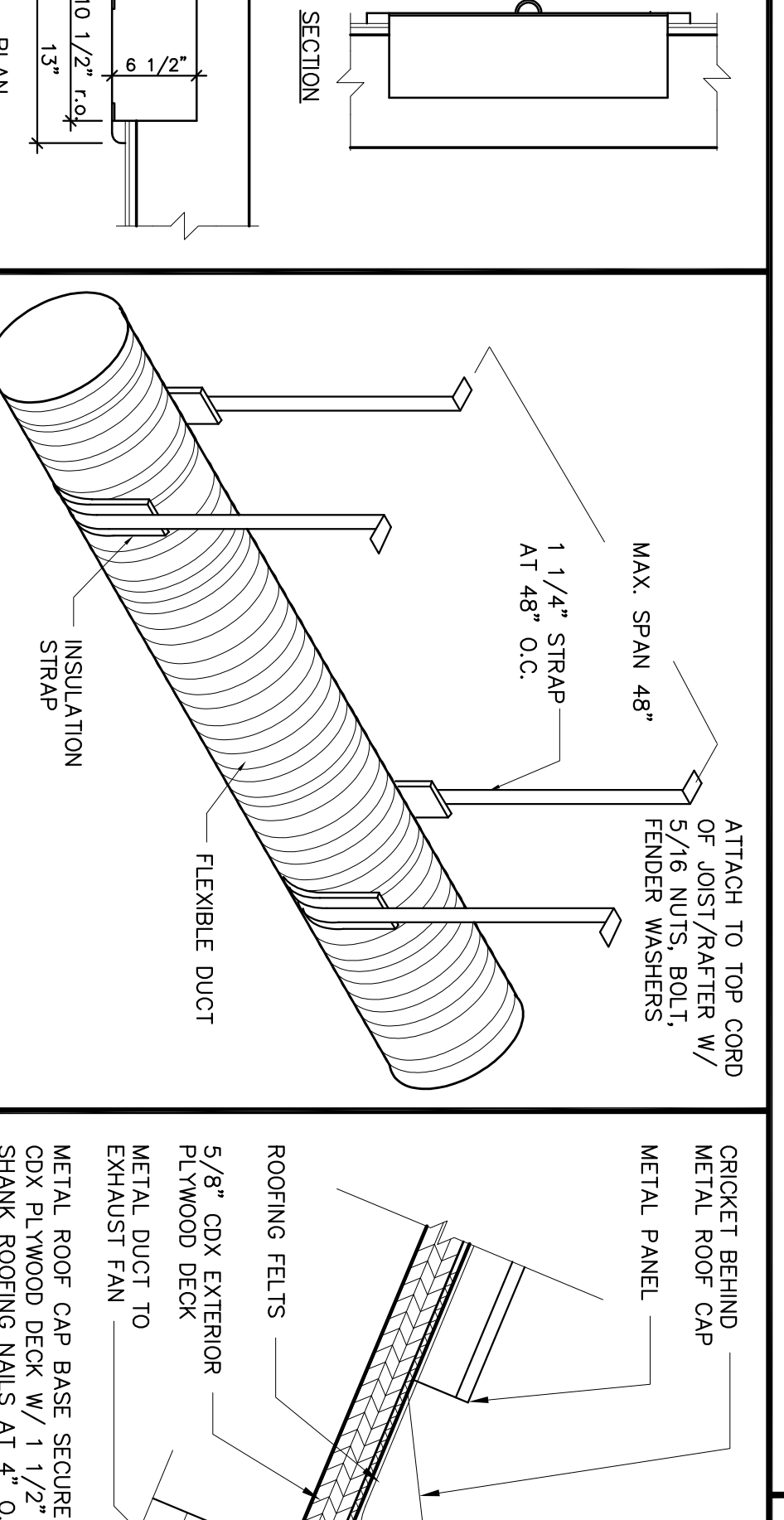
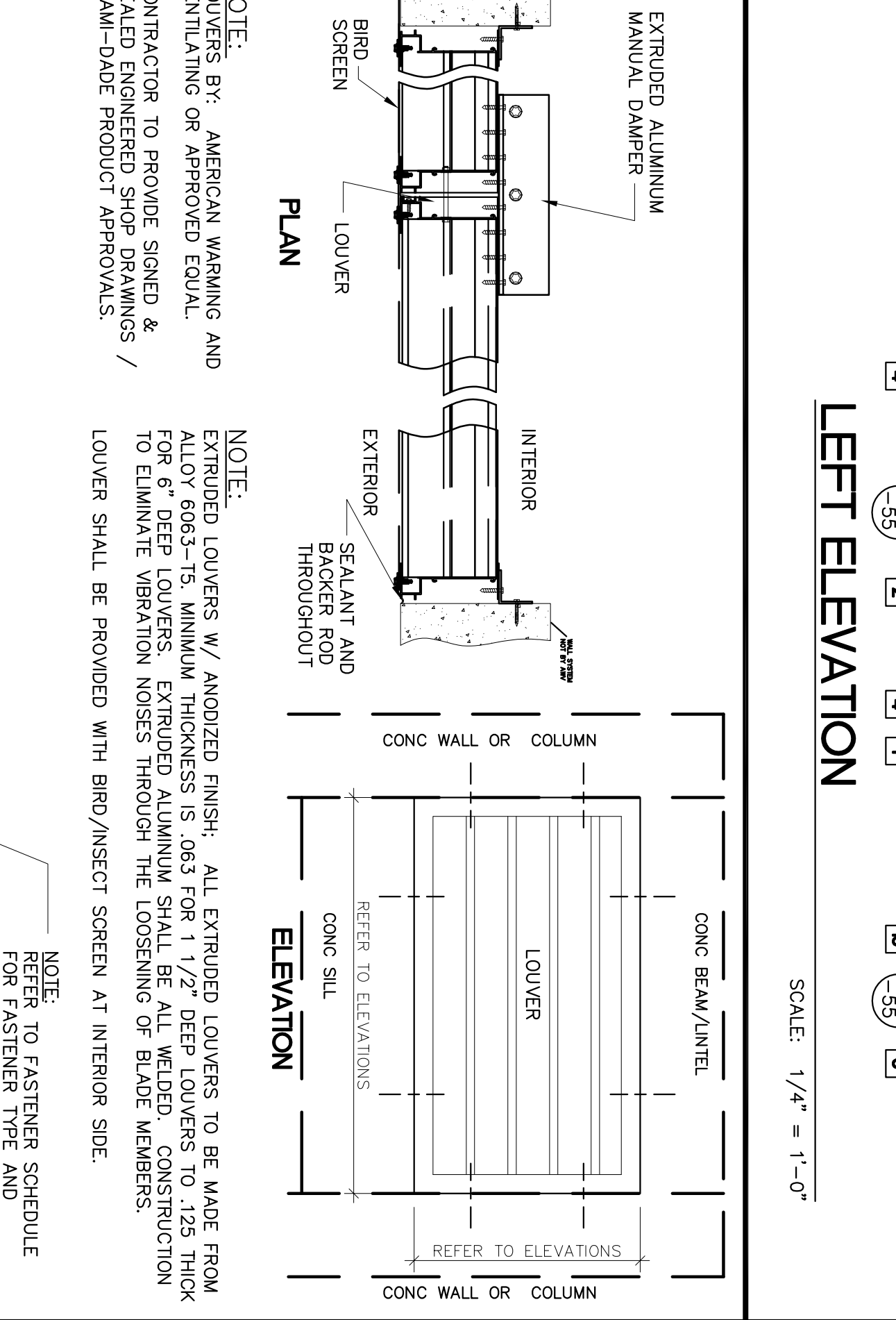


- ELEVATION KEYNOTES**
- 8" CONCRETE BLOCK WALL W/ 3/4" PAINTED SMOOTH FINISH STUCCO TYPICAL.
 - IMPACT RATED ALUMINUM LOUVER - 5'-4" W x 2'-8" H. SEE DETAIL THIS SHEET.
 - 3'-0" x 7'-0" HOLLOW METAL DOOR W/ CLOSER AND ACCESSIBLE HARDWARE (SEE DOOR SCHEDULE).
 - 2" WIDE VINYL REGLET - SEE DETAIL 3/84.11 - TYPICAL TOP AND BOTTOM
 - V STUCCO EXPANSION JOINT - SEE DETAIL BELOW 6/84.11
 - VINYL STUCCO CORNER MOLDING - SEE DETAIL 5/84.11
 - RECESSED WALL HYDRANT W/ VACUUM BREAKER. SEE PLUMBING FIXTURE SCHEDULE SHEET BP4.10
 - ROOF VENT. SEE DETAIL 10/84.11
 - SEMI-RECESSED WALL MOUNTED FIRE EXTINGUISHER CABINET - SEE DETAIL 8/84.11
 - STANDING SEAM METAL ROOFING. SEE SHEET 84.13 FOR ROOFING SPECIFICATIONS AND NOTES.
 - 2 x 10 GRADE #1 P.T. WOOD FASCGA. SEE DET. 6/84.12
 - 2'-0" x 2'-8" IMPACT RATED GLASS BLOCK. SEE DET. 7/84.11
 - BUILDING MAIN DISCONNECT.
 - 1-1/2" STAINLESS STEEL GUARDRAIL AT EQUIPMENT - FROM 25" A.F.F. TO 48" A.F.F. AND 4" PAST EDGE OF EQUIPMENT. SEE ELEVATIONS SHEET 1A/102. GUARDRAIL ATTACHED TO CMU WALL WITH MIN. 3" T. TACONS.
 - 1-1/2" STAINLESS STEEL GUARDRAIL AT EQUIPMENT - FROM 25" A.F.F. TO 48" A.F.F. AND 4" PAST EDGE OF EQUIPMENT. SEE ELEVATIONS SHEET 1A/102. GUARDRAIL ATTACHED TO CMU WALL WITH MIN. 3" T. TACONS.



BROWARD COUNTY PARKS AND RECREATION DIVISION
DISTRICT 2 - TRADEWINDS PARK RESTROOM BUILDING
3600 W. SAMPLE ROAD, COCONUT CREEK, FLORIDA - 33073

Walters • Zackria Associates
ARCHITECTURE • PLANNING • DESIGN
620 SE 1ST STREET FT. LAUDERDALE FL 33301
ROBERT S. WALTERS, AIA - FL AR 8880
ABBAS H. ZACKRIA, CSI - FL AR 91520
(954) 522-4123 FAX: (954) 522-4128

B.4.11
SHEET
0910
CHECKED BY: WZA
DATE: 10-27-10
REVISIONS:
DRAWN BY: DK