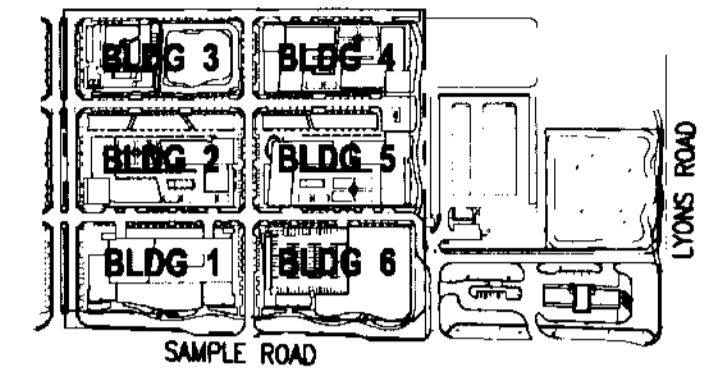
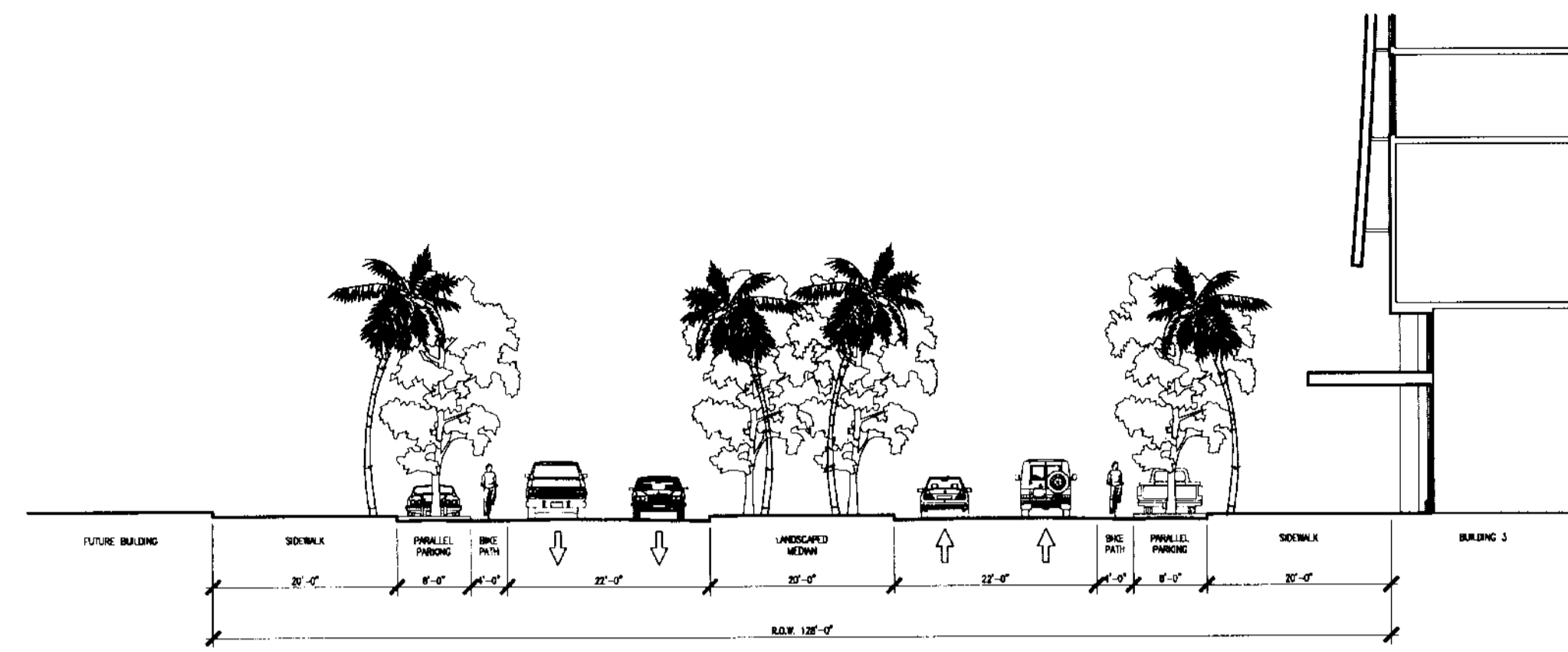


THE VILLAGE OF MARBELLA

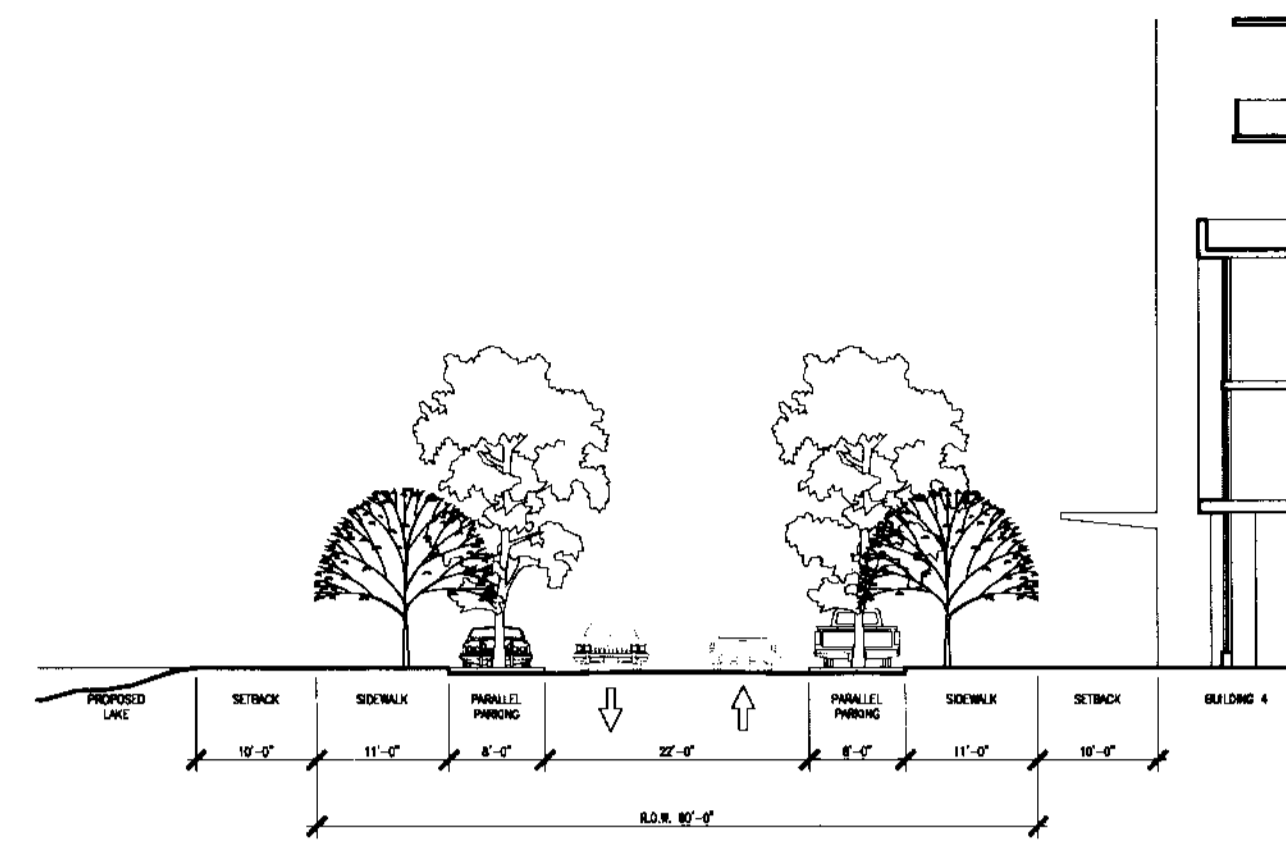
KEYPLAN N.T.S.



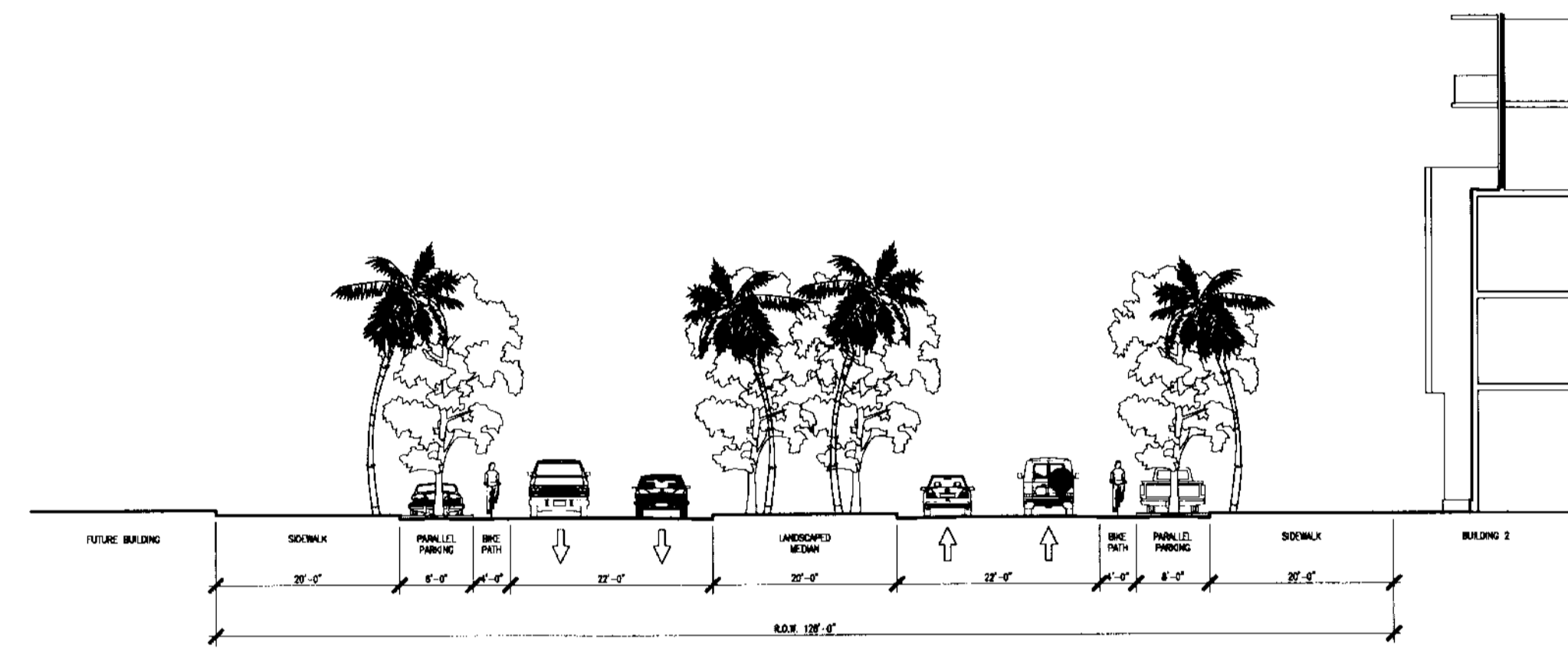
REVISIONS		
NO.	DESCRIPTION	ISSUE DATE



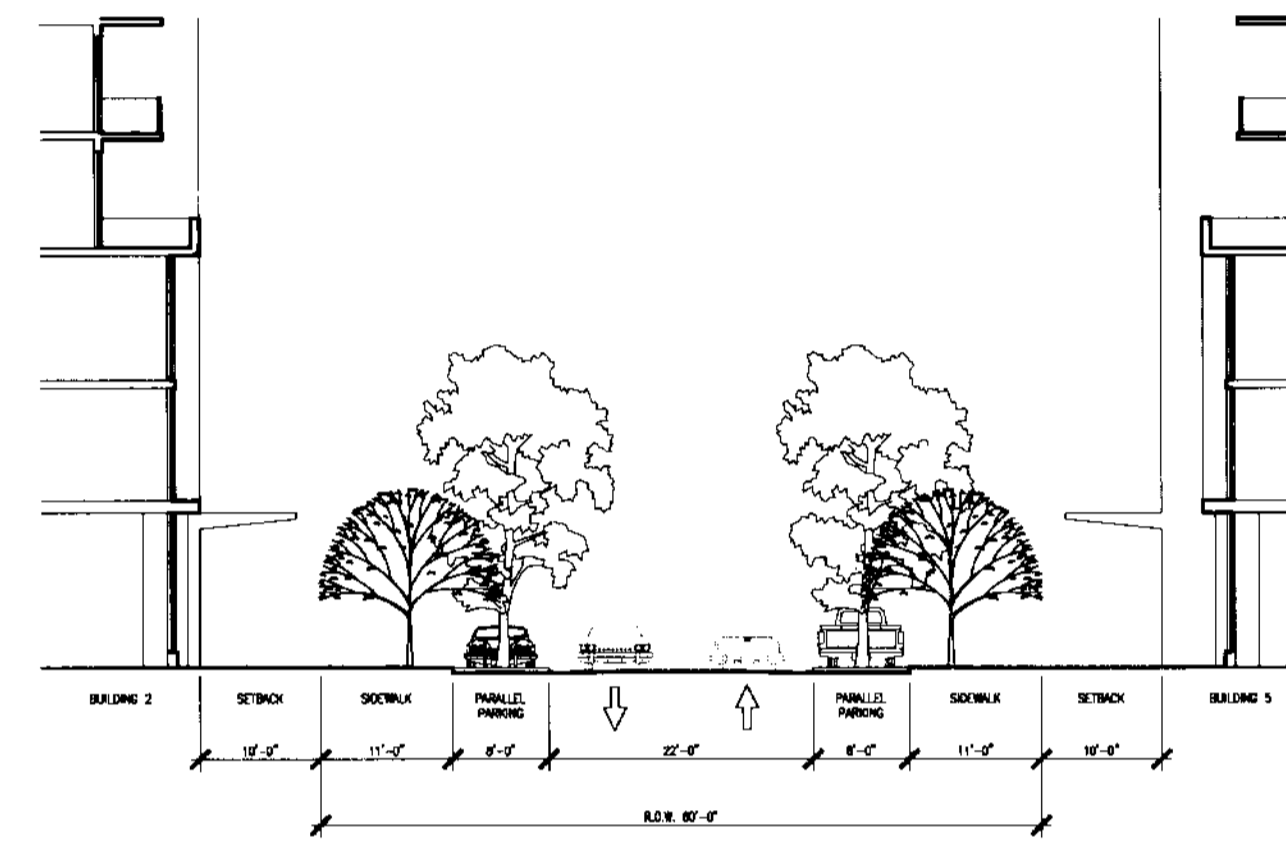
9 STREET TYPE A
SCALE: 1/16"=1'-0"



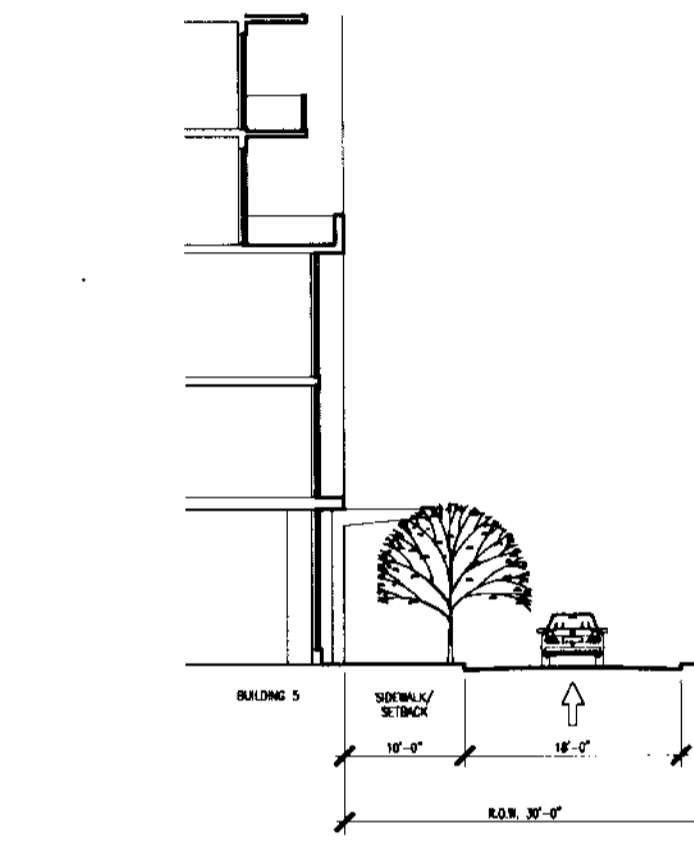
8 STREET TYPE D
SCALE: 1/16"=1'-0"



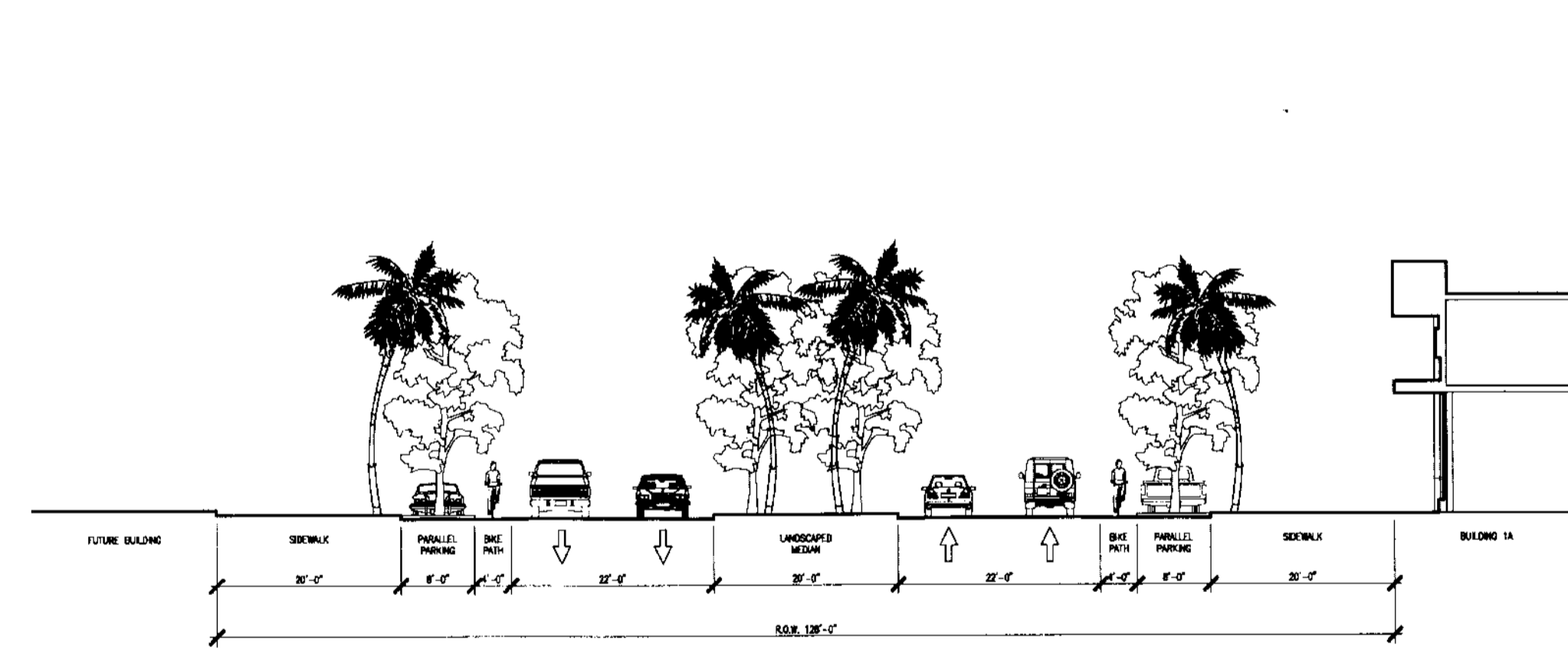
7 STREET TYPE A
SCALE: 1/16"=1'-0"



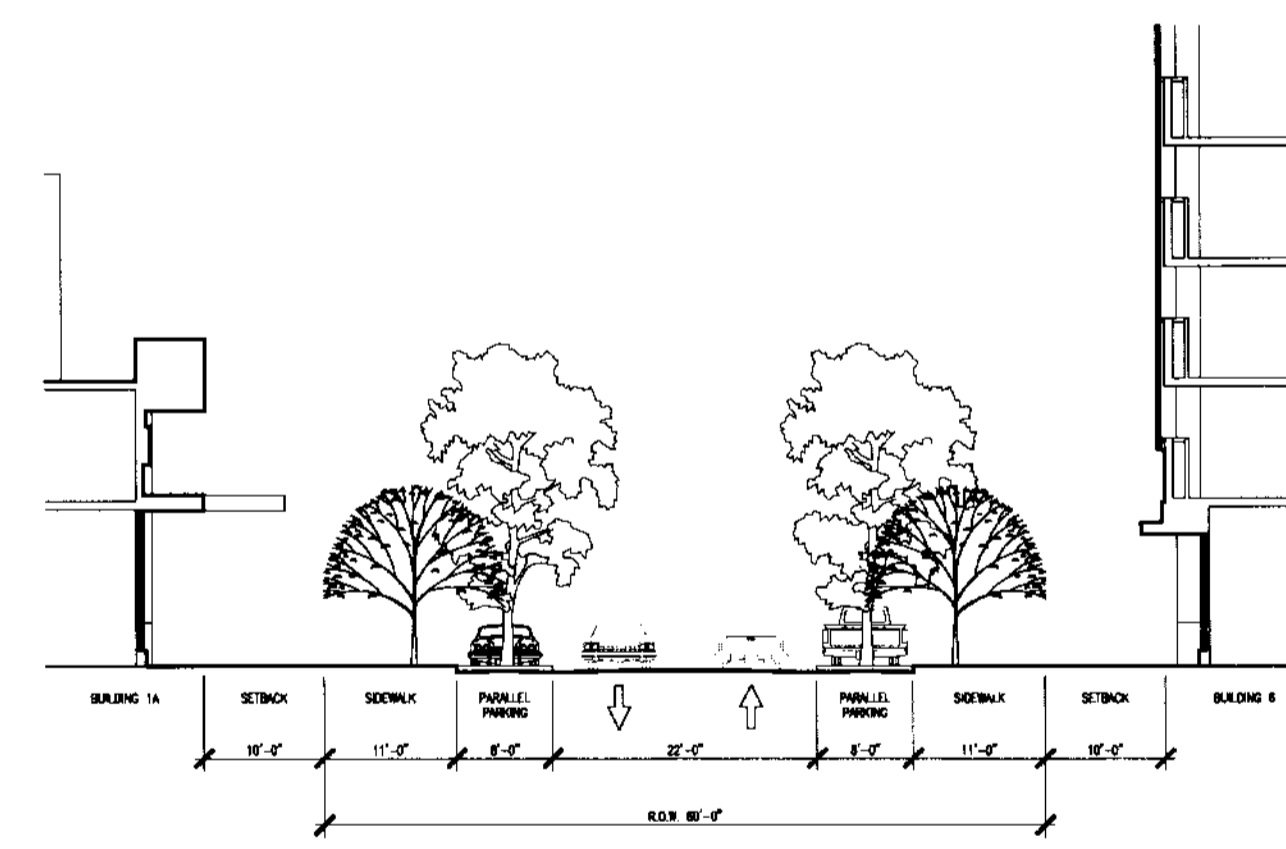
6 STREET TYPE D
SCALE: 1/16"=1'-0"



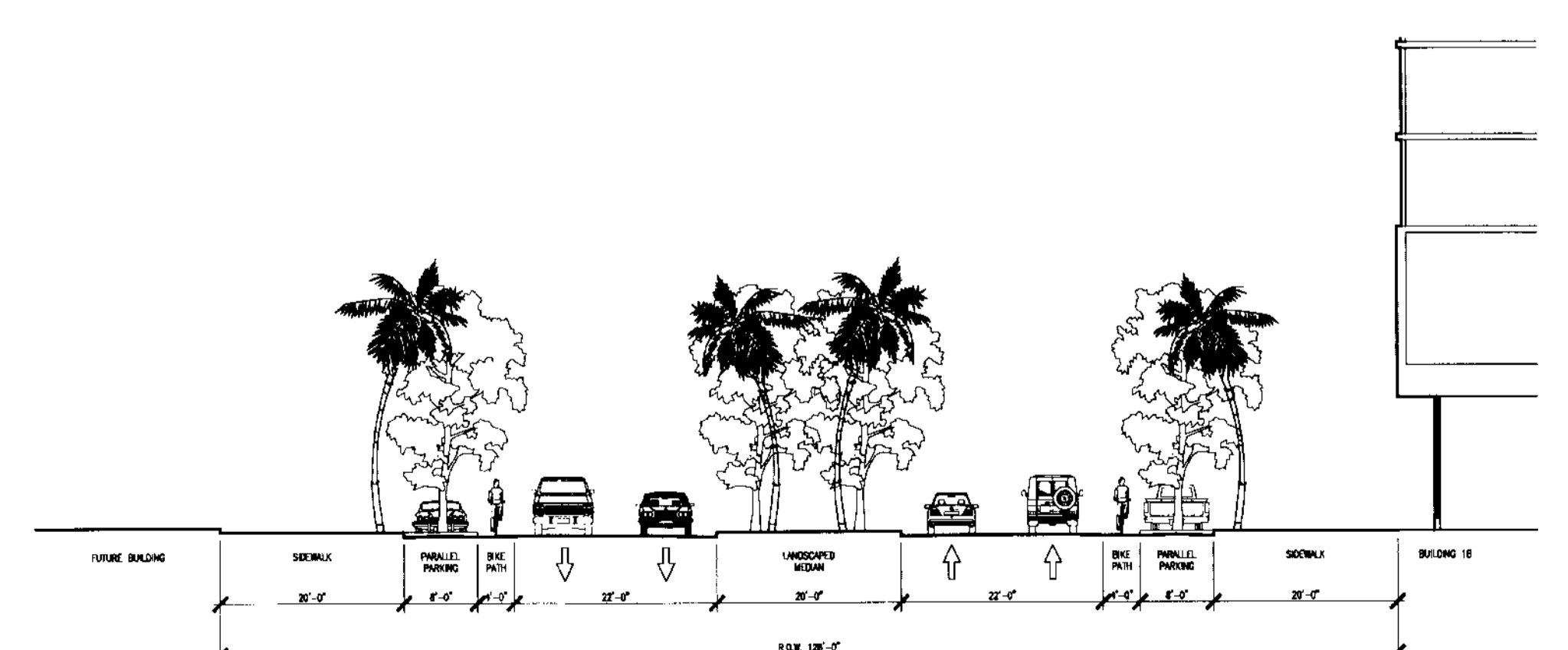
5 ONE WAY ACCESSWAY
SCALE: 1/16"=1'-0"



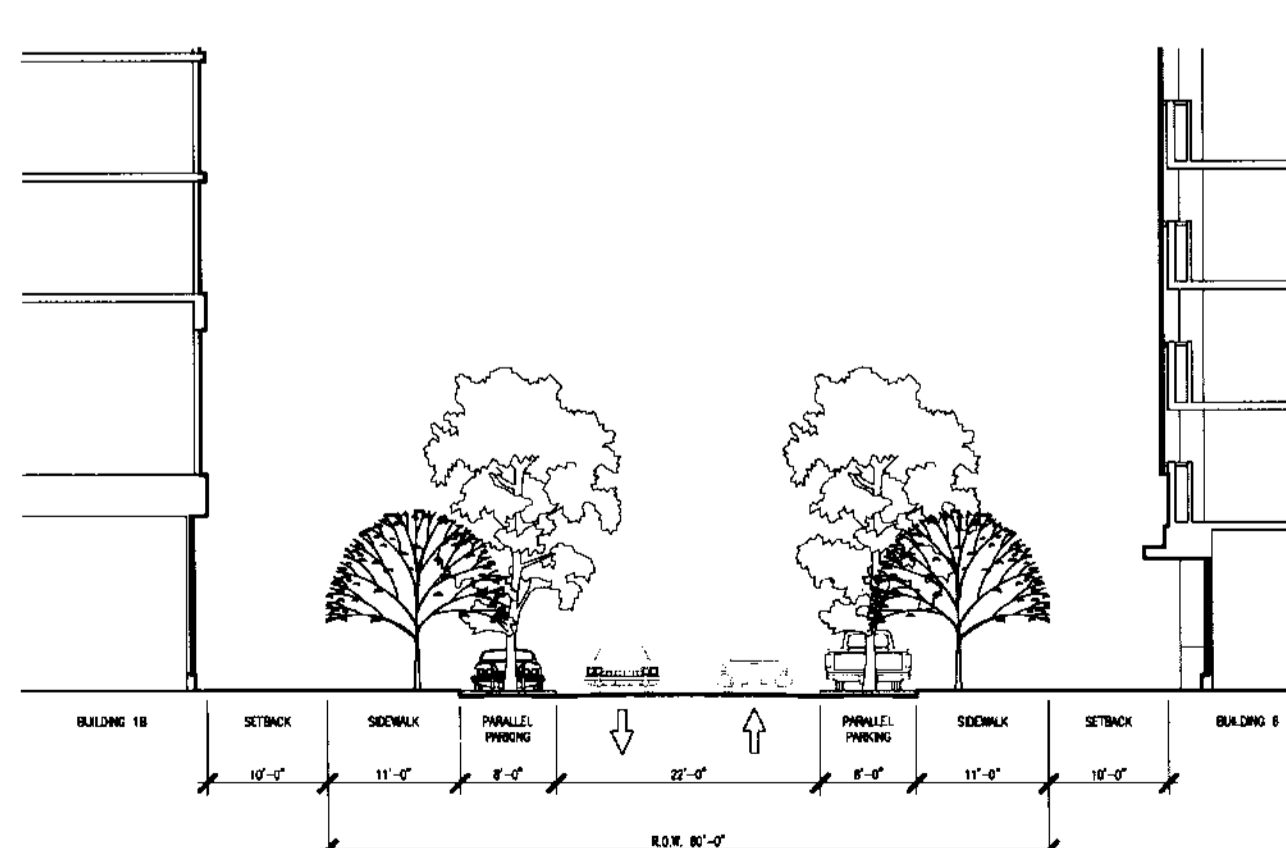
4 STREET TYPE A
SCALE: 1/16"=1'-0"



3 STREET TYPE D
SCALE: 1/16"=1'-0"



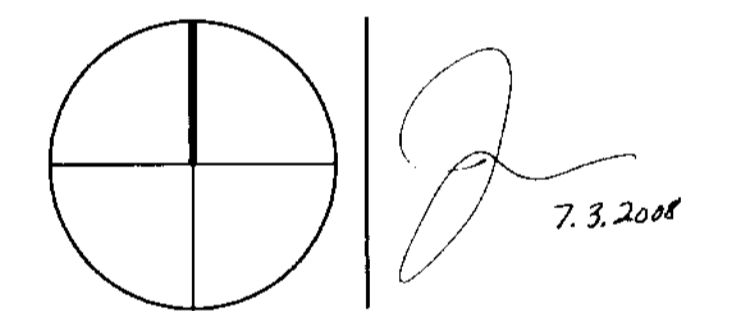
2 STREET TYPE A - OPTION B
SCALE: 1/16"=1'-0"



1 STREET TYPE D - OPTION B
SCALE: 1/16"=1'-0"

ISSUED FOR SITE SUBMISSION

NORTH SEAL



ADD Inc Architecture Interior Planning

One Messers Tower
Suite 1670
Two South
Messers Boulevard
Miami, FL 33131
T. 305.462.6700
F. 305.462.6770
www.addinc.com

Cambridge Miami

JOB NUMBER: 06127.03

CHECKED BY: TJB

ISSUE DATE: 07/03/08

SCALE: 1/16"=1'-0"

SHEET TITLE

North-South Streets
Sections for
Schemes A and B

SHEET NUMBER

MP.003C