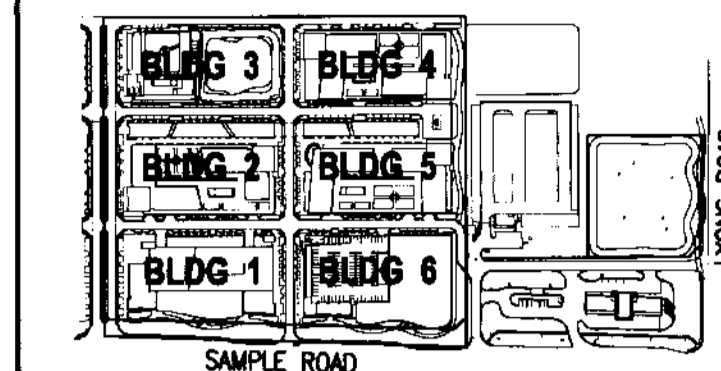


# THE VILLAGE OF MARBELLA

KEYPLAN N.T.S.

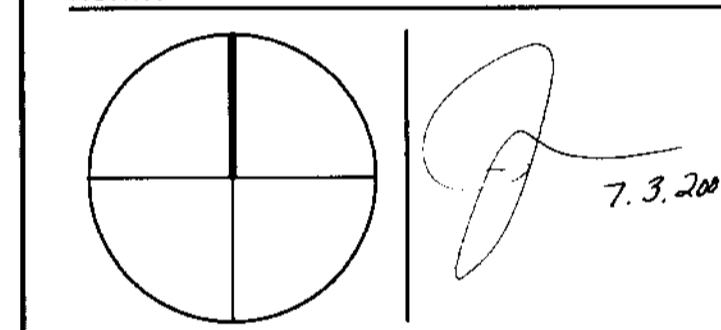


REVISIONS

NO.	DESCRIPTION	ISSUE DATE

**ISSUED FOR SITE SUBMISSION**

NORTH SEAL



**ADD Inc** Architecture Interior Planning

One Biscayne Tower  
Suite 1670  
Two South  
Biscayne Boulevard  
Miami, FL 33131  
T. 305.462.6700  
F. 305.462.6770  
www.addinc.com

Cambridge Mass

JOB NUMBER: 06127.03

CHECKED BY: TJB

ISSUE DATE: 07/03/08

SCALE: 1"=40'-0"

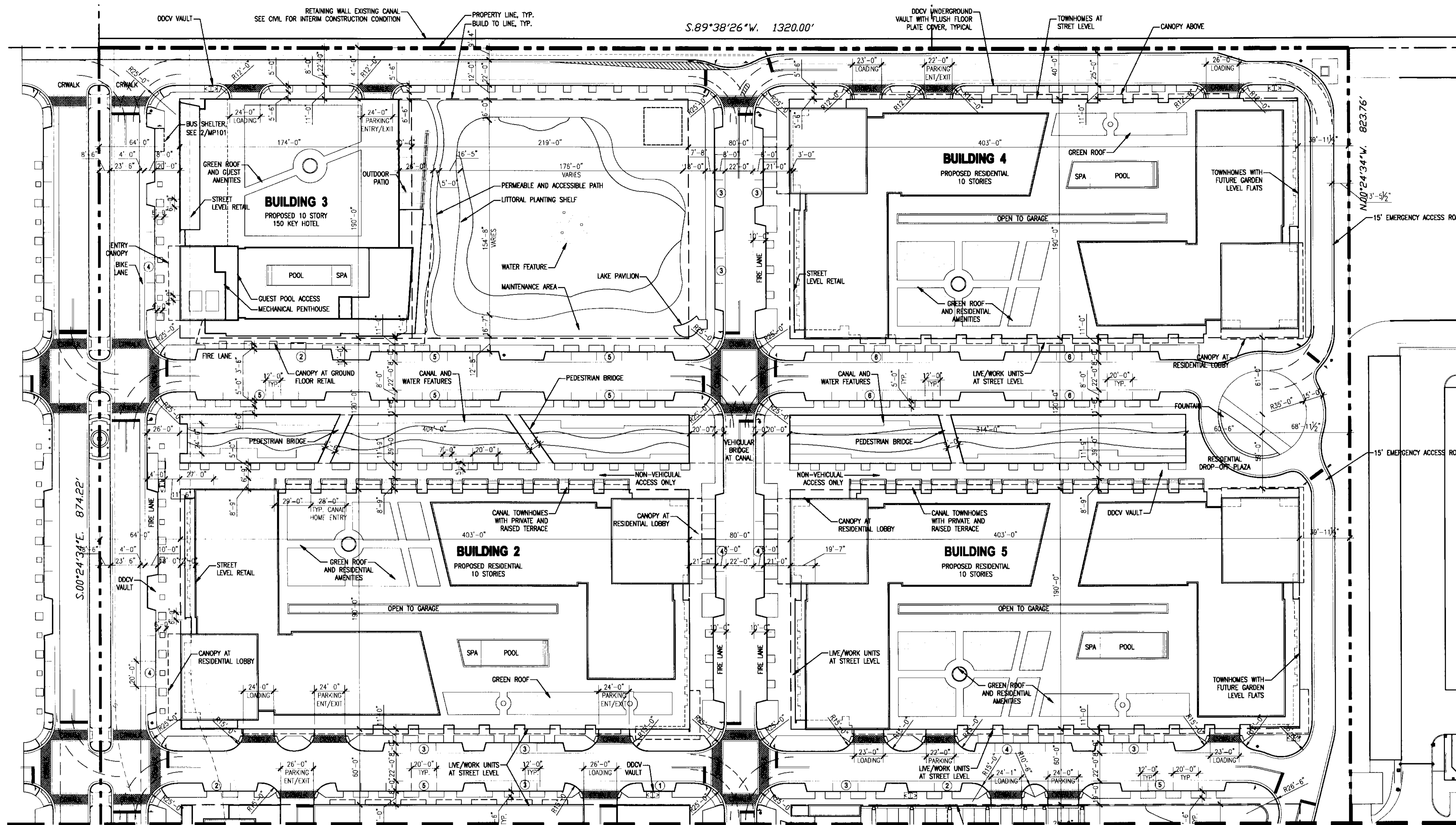
SHEET TITLE

Partial Enlarged Geometric Control Plan

SHEET NUMBER

**MP.101**

COPYRIGHT ADD INC 2008



MATCHLINE - SEE SHEET 2 / MP.102

1 PARTIAL ENLARGED GEOMETRIC CONTROL PLAN  
SCALE: 1" = 40'-0"

THE APPLICANT IS CURRENTLY WORKING WITH ENBECOM TO PRODUCE A CUSTOM BUS SHELTER, GAZEBO LOCATED AT PARCEL 7 AND PAVILION AT THE LAKE ADJACENT TO BUILDING NO. 03. ALL STRUCTURES ARE INTENDED TO HAVE A MATERIAL AND FINISH THAT ARE CONSISTENT WITH THE OVERALL DESIGN INTENT. THE IMAGE TO THE RIGHT SHOWS AN EXAMPLE OF THE DESIGN ELEMENTS WHICH WILL INCLUDE HIGH QUALITY GLASS AND METAL STRUCTURES THAT WILL BE CONSISTENT WITH THE OTHER STREET ELEMENTS IN THE DISTRICT.

CONTACT INFORMATION:  
ENBECOM  
225 RUE NORMAN, MONTREAL  
QUEBEC, CANADA H1R 1A3  
US CONTACT: TONY MOUSSIS  
T. 713.824.8861

THE APPLICANT SHALL SUBMIT FINAL DESIGNS TO CITY FOR APPROVAL BEFORE CONSTRUCTION.

2 PREFABRICATED CUSTOM BUS SHELTER  
SCALE: N.T.S.

