

BOUNDARY SURVEY OF

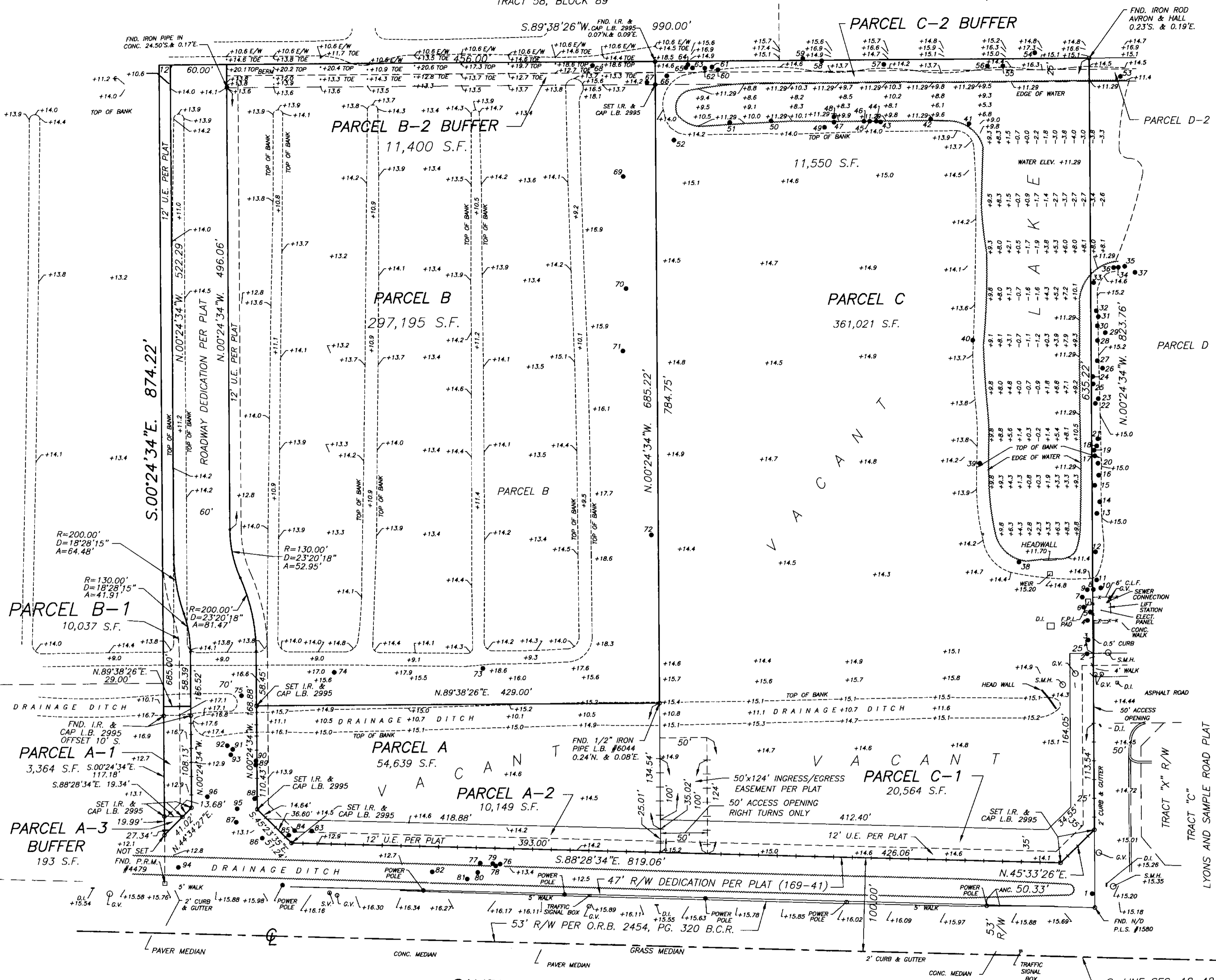
PARCELS A, A-1, A-2, A-3, B, B-1, B-2 C, C-1 AND C-2 ACCORDING TO LYONS CREEK PLAT AS RECORDED IN PLAT BOOK 169, PAGE 41 OF THE PUBLIC RECORDS OF BROWARD COUNTY, FLORIDA.

TREE LOCATION AND DESCRIPTION

(Provided By: Earth Advisors Inc. Dated 9-18-07)

LEGEND: 3 TREE NUMBER LOCATION

- DESCRIPTION LIST: 1. SABLE PALM, 2. GUMBO LIMBO, 3. GUMBO LIMBO, 4. GUMBO LIMBO, 5. QUEEN PALM, 6. QUEEN PALM, 7. QUEEN PALM, 8. QUEEN PALM, 9. QUEEN PALM, 10. QUEEN PALM, 11. QUEEN PALM, 12. MAHOGNY, 13. MAHOGNY, 14. WAX MYRTLE, 15. WAX MYRTLE, 16. MAHOGNY, 17. WAX MYRTLE, 18. WAX MYRTLE, 19. WAX MYRTLE, 20. WAX MYRTLE, 21. MAHOGNY, 22. FLORIDA HOLLY, 23. MAHOGNY, 24. FLORIDA HOLLY, 25. WAX MYRTLE, 26. WAX MYRTLE, 27. LIVE OAK, 28. WAX MYRTLE, 29. WAX MYRTLE, 30. LIVE OAK, 31. FLORIDA HOLLY, 32. WAX MYRTLE, 33. LIVE OAK, 34. WAX MYRTLE, 35. WAX MYRTLE, 36. FLORIDA HOLLY, 37. LIVE OAK, 38. COASTAL PLAIN WILLOW, 39. EARLEAF ACACIA, 40. EARLEAF ACACIA, 41. COASTAL PLAIN WILLOW, 42. FLORIDA HOLLY, 43. COASTAL PLAIN WILLOW, 44. MANGO, 45. MANGO, 46. MANGO, 47. FLORIDA HOLLY, 48. COASTAL PLAIN WILLOW, 49. MANGO, 50. FLORIDA HOLLY, 51. FLORIDA HOLLY, 52. LEAD TREE, 53. FLORIDA HOLLY, 54. FLORIDA HOLLY, 55. FLORIDA HOLLY, 56. EARLEAF ACACIA, 57. EARLEAF ACACIA, 58. FLORIDA HOLLY, 59. SABLE PALM, 60. LEAD TREE, 61. LEAD TREE, 62. LEAD TREE, 63. FLORIDA HOLLY, 64. LEAD TREE, 65. LEAD TREE, 66. LEAD TREE, 67. FLORIDA HOLLY, 68. FLORIDA HOLLY, 69. FLORIDA HOLLY, 70. FLORIDA HOLLY, 71. FLORIDA HOLLY, 72. EARLEAF ACACIA, 73. EARLEAF ACACIA, 74. FLORIDA HOLLY, 75. FLORIDA HOLLY, 76. AUSTRALIAN PINE, 77. AUSTRALIAN PINE, 78. AUSTRALIAN PINE, 79. AUSTRALIAN PINE, 80. AUSTRALIAN PINE, 81. MALELEUCA, 82. EARLEAF ACACIA, 83. EARLEAF ACACIA, 84. MALELEUCA, 85. EARLEAF ACACIA, 86. EARLEAF ACACIA, 87. EARLEAF ACACIA, 88. MALELEUCA, 89. AUSTRALIAN PINE, 90. AUSTRALIAN PINE, 91. AUSTRALIAN PINE, 92. FLORIDA HOLLY, 93. AUSTRALIAN PINE, 94. EARLEAF ACACIA, 95. SABLE PALM, 96. LEAD TREE



SURVEY NOTES

The NFIP Flood Map has designated the herein described lands to be situated in Zone X, Community Panel No. 120031 0115 X NO Base Flood Elevation. The lands shown hereon were not abstracted for rights-of-way, easements, reservations, and other similar matters of record. Such information should be obtained through appropriate title verification. If lands abstracted - Title Commitment No. by Elevations shown are prefixed with a plus sign and refer to National Geodetic Vertical Datum. (1929) Reference Bench Mark: No. 2602 Bearings indicated hereon are based on an ASSUMED value of N.88°28'34"W. being the SOUTH LINE OF SECTION 18-48-42

Description as indicated hereon furnished by Client. This survey is prepared for the sole and exclusive use of the parties as Surveyed for and as Certified to and shall not be relied upon by any other entity or individual.

SURVEY ABBREVIATIONS table with columns for symbols and their corresponding descriptions like ARC, ASPH., BLDG., etc.

Tree location 9-18-07 Additional Topo 8-29-07 Update Survey 6-09-06 Update Survey 5-09-06 Update Survey 4-21-06

NOTE: NOT VALID WITHOUT THE SIGNATURE AND THE ORIGINAL RAISED SEAL OF A FLORIDA LICENSED SURVEYOR AND MAPPER.

Professional signature block for Mark D. Sturges, State of Florida, License No. 4829, including date, scale, and sketch number.