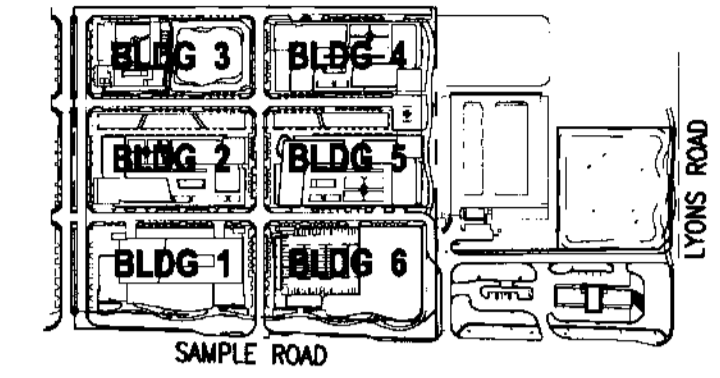
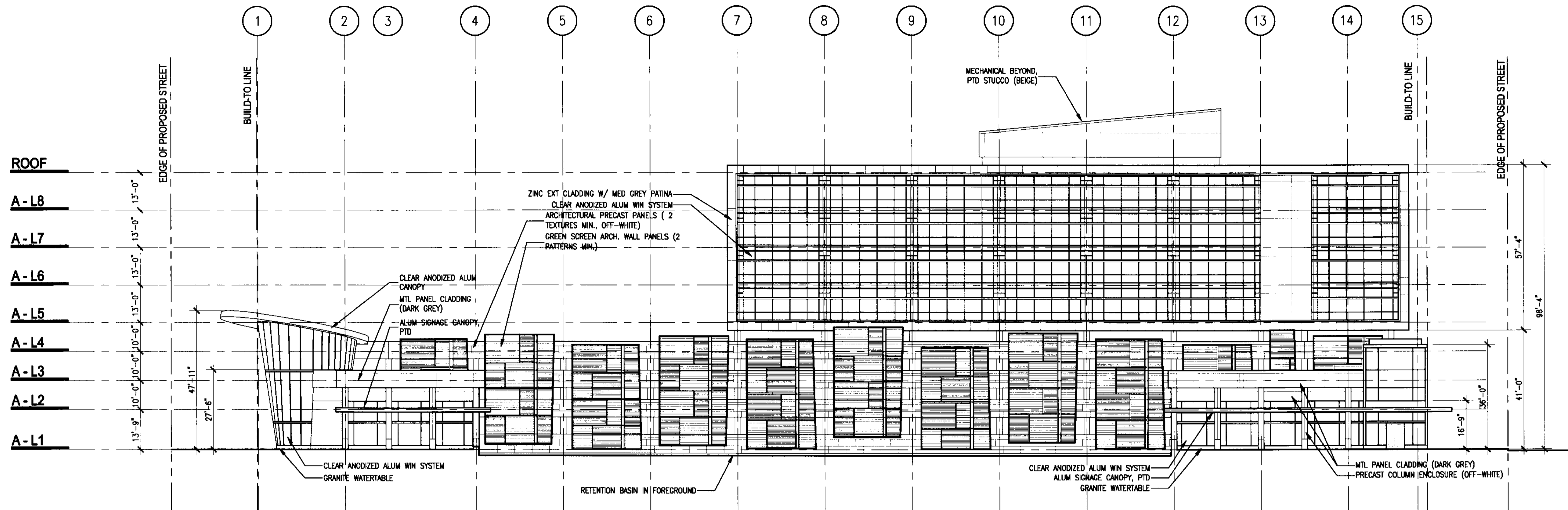


# THE VILLAGE OF MARBELLA

KEYPLAN N.T.S.

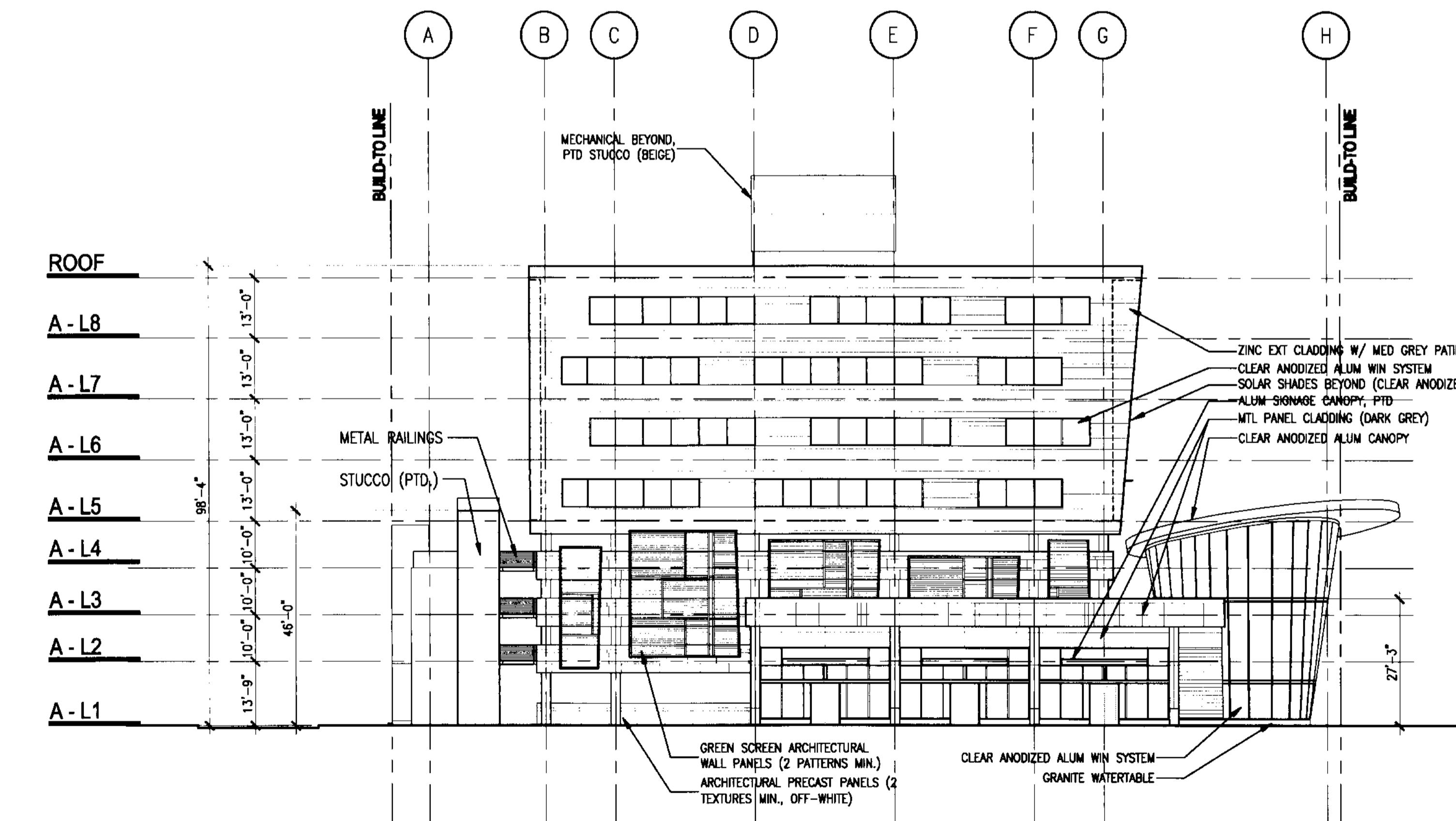


REVISIONS		
NO.	DESCRIPTION	ISSUE DATE



3 BUILDING NO. 01 - SOUTH ELEVATION - OPTION A  
SCALE: 1" = 20'-0"

NOTE:  
4,030 SQ FT OF WALL AREA  
1,325 SQ FT OF FENESTRATION  
32.9% FENESTRATED  
FENESTRATION IS NOT 50% BECAUSE OF THE DISTANCE FROM THE ROAD AND THE VISUAL BREAK PROVIDED BY THE RETENTION POND

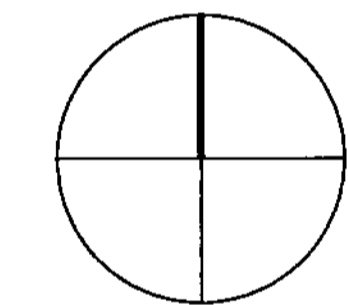


4 BUILDING NO. 01 - WEST ELEVATION - OPTION A  
SCALE: 1" = 20'-0"

NOTE:  
1,858 SQ FT OF WALL AREA  
1,039 SQ FT OF FENESTRATION  
55.0% FENESTRATED

**ISSUED FOR SITE SUBMISSION**

NORTH SEAL



*[Signature]*  
7.3.2008

**ADD Inc** Architecture Interior Planning

One Biscayne Tower  
Suite 9670  
Two South  
Biscayne Boulevard  
Miami, FL 33131  
T. 305.482.8700  
F. 305.482.8770  
www.addinc.com Cambridge Miami

JOB NUMBER: 06127.03

CHECKED BY: TJB

ISSUE DATE: 07/03/08

SCALE: 1"=20'-0"

SHEET TITLE

**Building No. 01  
Scheme A  
South and West  
Elevations**

SHEET NUMBER

**A1.202A**