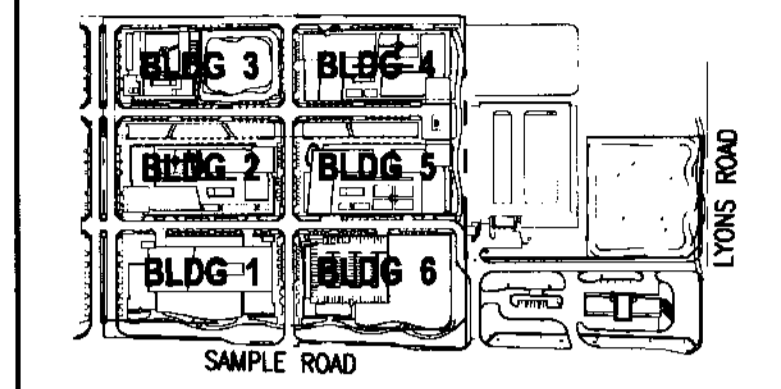


GENERAL NOTE: FOR ALL RESIDENTIAL FLOORS, THE FLOOR-TO-CEILING HEIGHT IS APPROXIMATELY 9'-0". IT WILL VARY WITH THE THICKNESS OF THE SLAB AND CONSTRUCTION CONSTRAINTS.

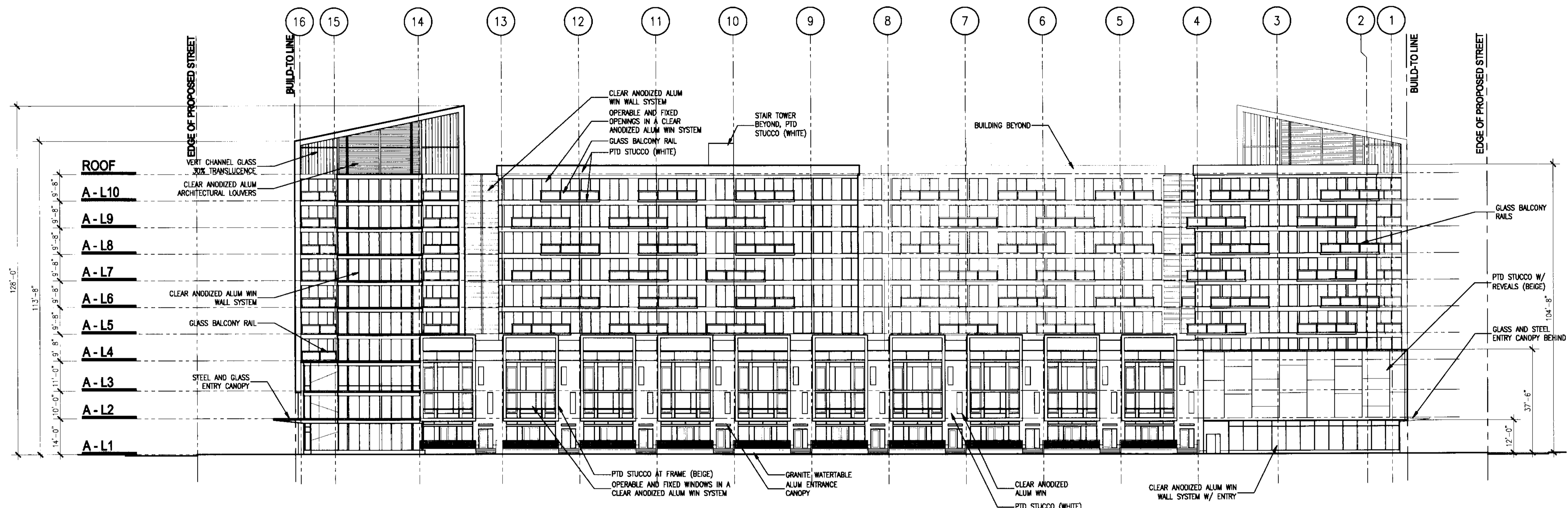
THE VILLAGE OF MARBELLA

KEYPLAN N.T.S.

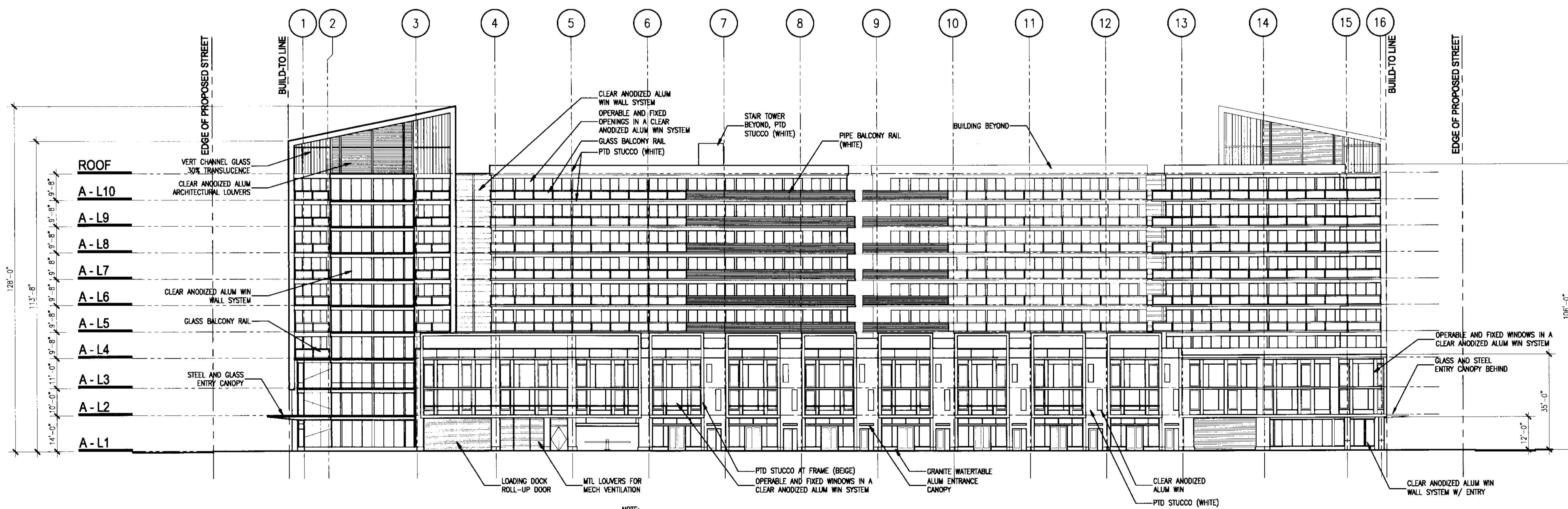


REVISIONS

| NO. | DESCRIPTION | ISSUE DATE |
|-----|-------------|------------|
| | | |
| | | |
| | | |



1 BUILDING NO. 02 - NORTH ELEVATION
SCALE: 1" = 20'-0"



2 BUILDING NO. 02 - SOUTH ELEVATION
SCALE: 1" = 20'-0"

ISSUED FOR SITE SUBMISSION

NORTH SEAL

ADD Inc Architecture Interior Planning
 One Biscayne Tower
 Suite 1470
 Two South
 Biscayne Boulevard
 Miami, FL 33131
 T. 305.462.8700
 F. 305.462.8770
 www.addinc.com
 Cambridge Mass

JOB NUMBER: 06127.03
 CHECKED BY: TJB
 ISSUE DATE: 07/03/08
 SCALE: 1"=20'-0"

SHEET TITLE

Building 2 North & South Elevation

SHEET NUMBER

A2.201

COPYRIGHT ADD INC 2008