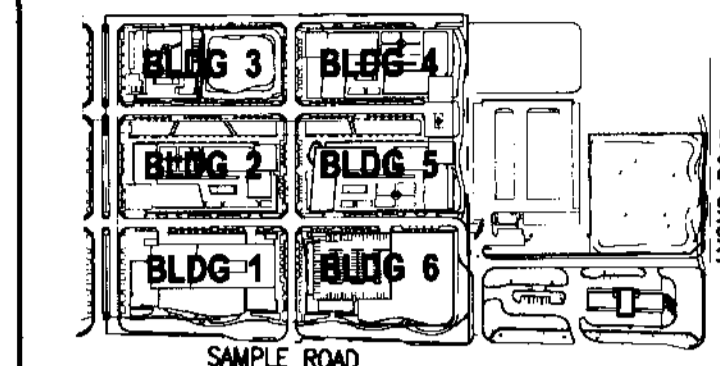


# THE VILLAGE OF MARBELLA

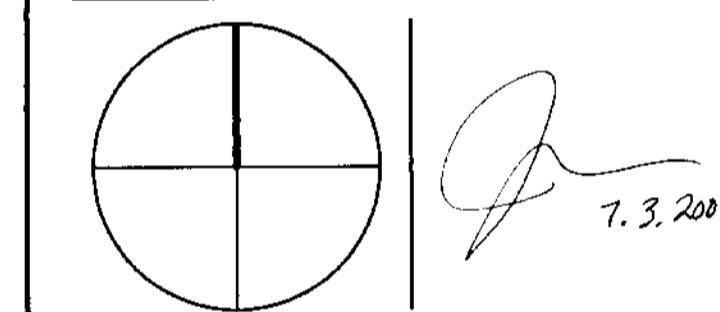
KEYPLAN N.T.S.



REVISIONS		
NO.	DESCRIPTION	ISSUE DATE

**ISSUED FOR SITE SUBMISSION**

NORTH SEAL



**ADD Inc** Architecture Interior Planning

One Marbella Tower  
Suite 1670  
Two South  
Marbella Boulevard  
Miami, FL 33131  
T: 305-482-8700  
F: 305-482-8770  
www.addinc.com  
Cambridge Miami

JOB NUMBER: 06127.03  
CHECKED BY: TJB  
ISSUE DATE: 07/03/08  
SCALE: AS NOTED

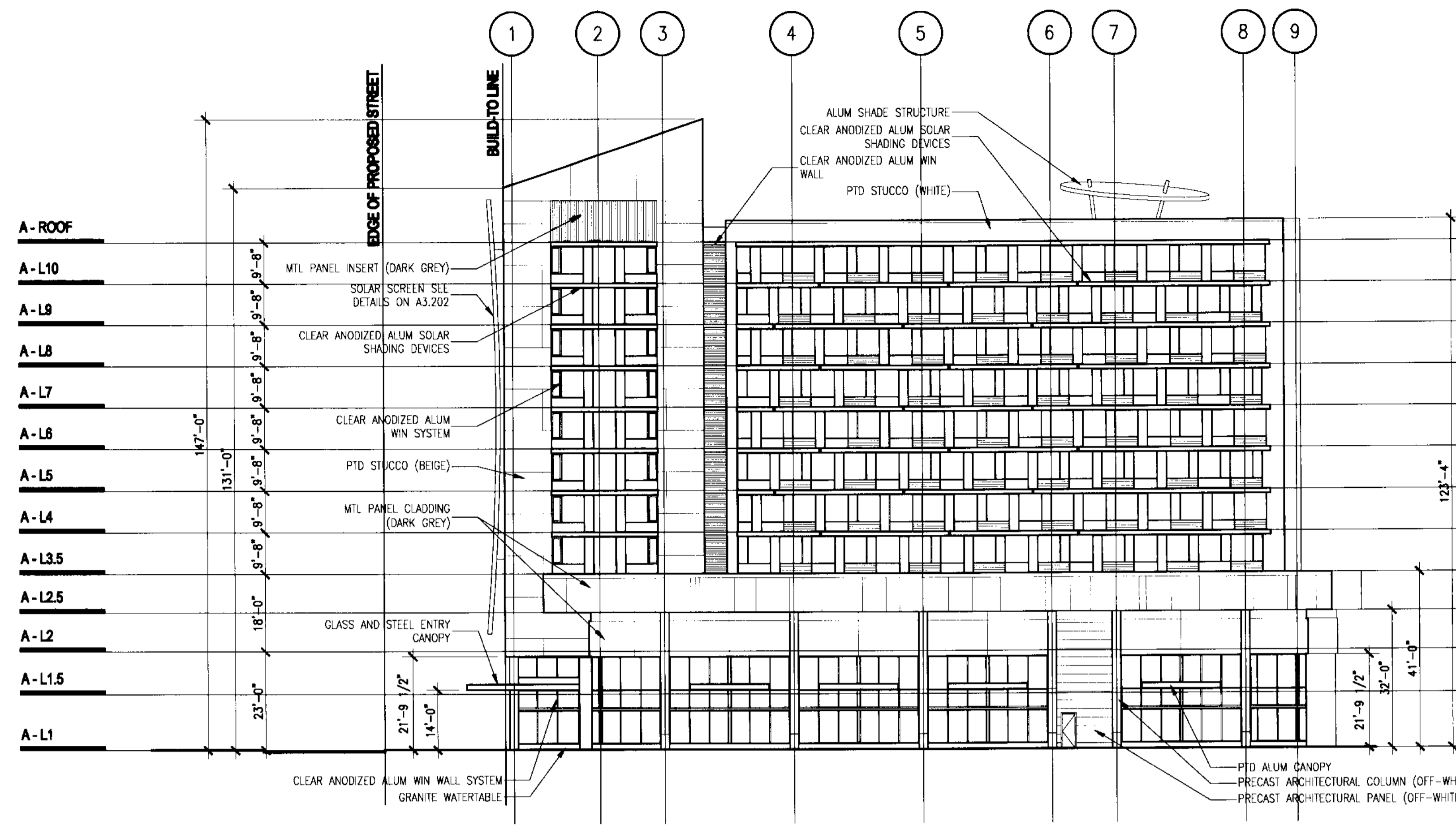
SHEET TITLE

**Building No. 03  
South and West  
Elevations & Solar  
Screen Details**

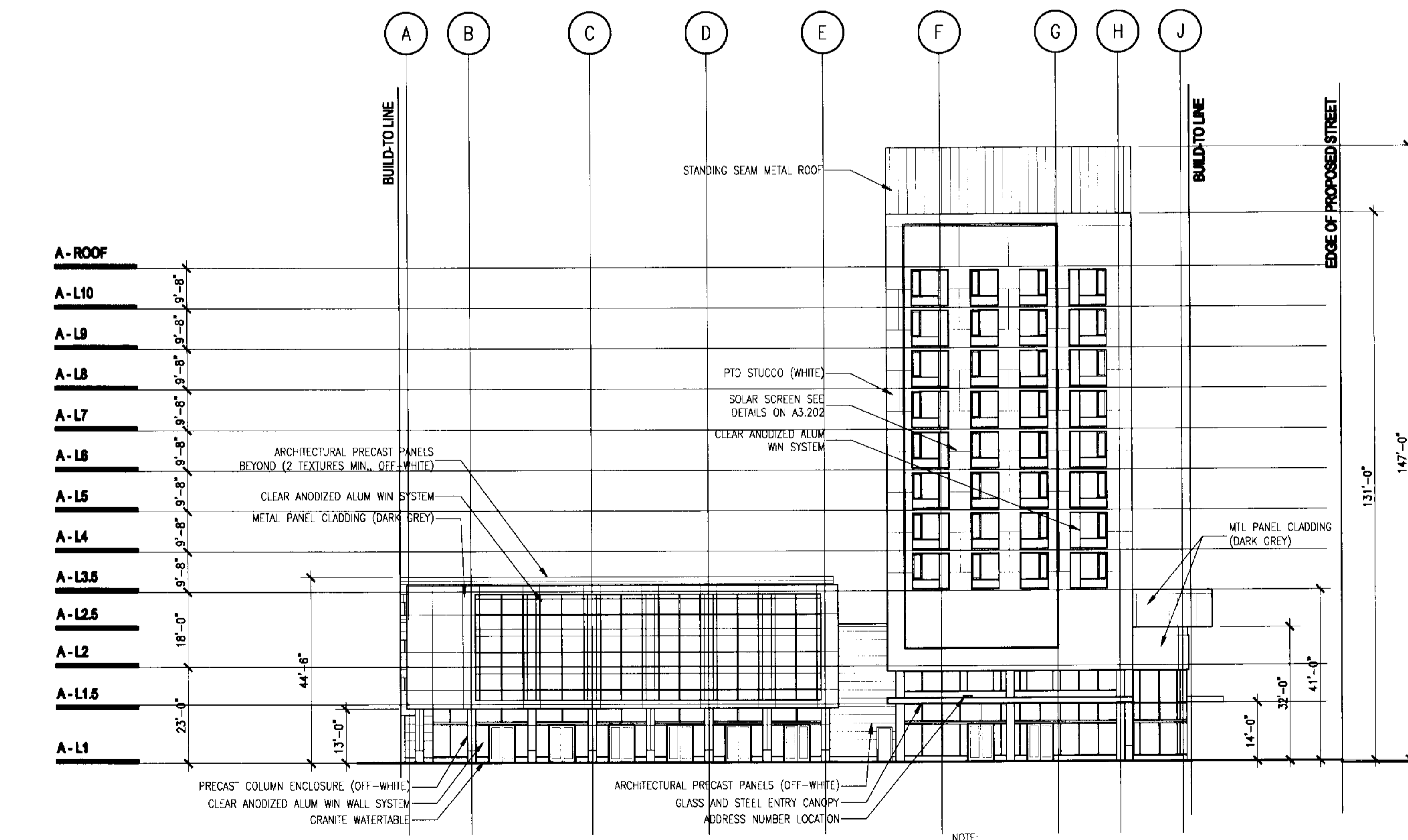
SHEET NUMBER

**A3.202**

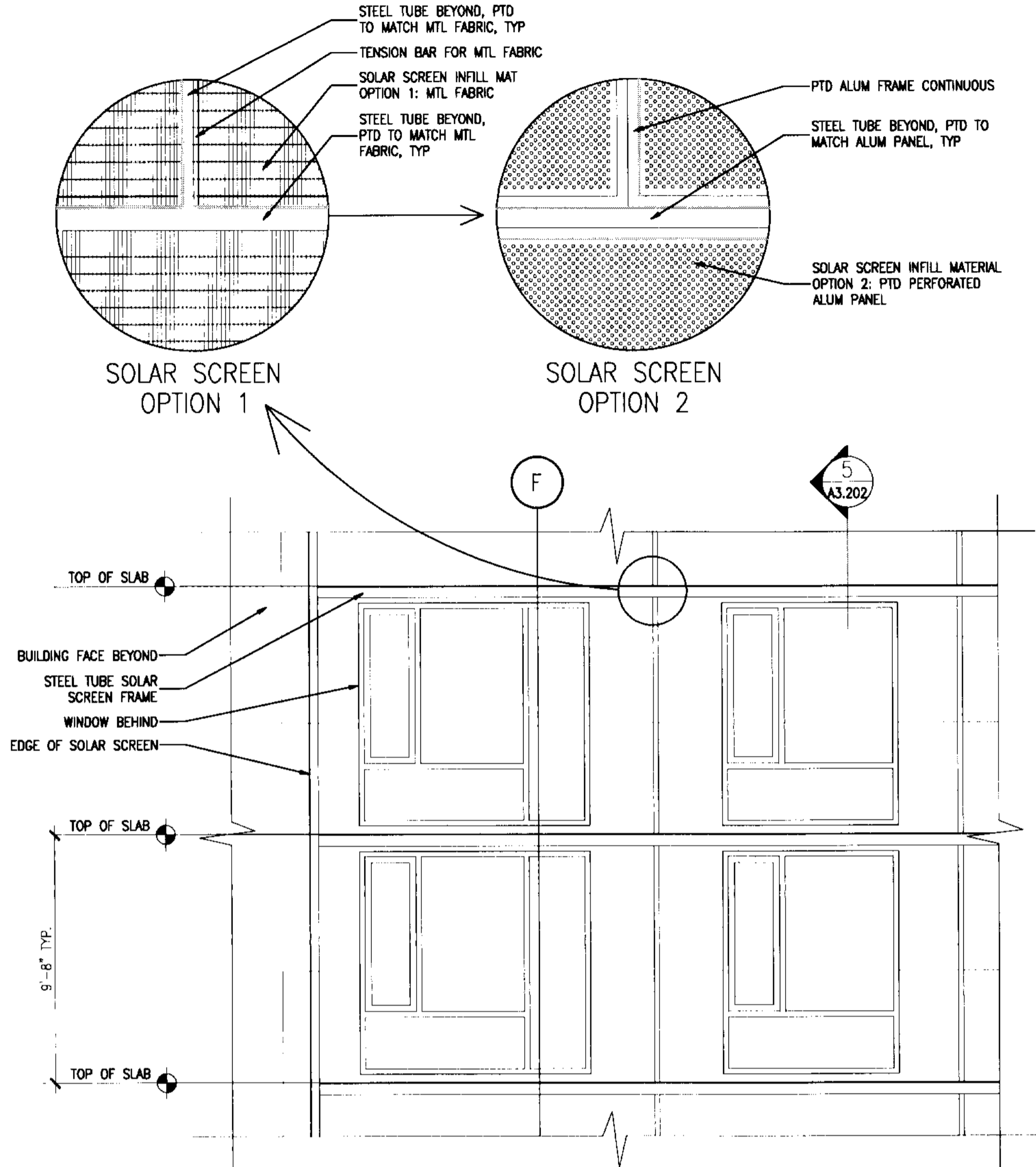
COPYRIGHT ADD INC 2008



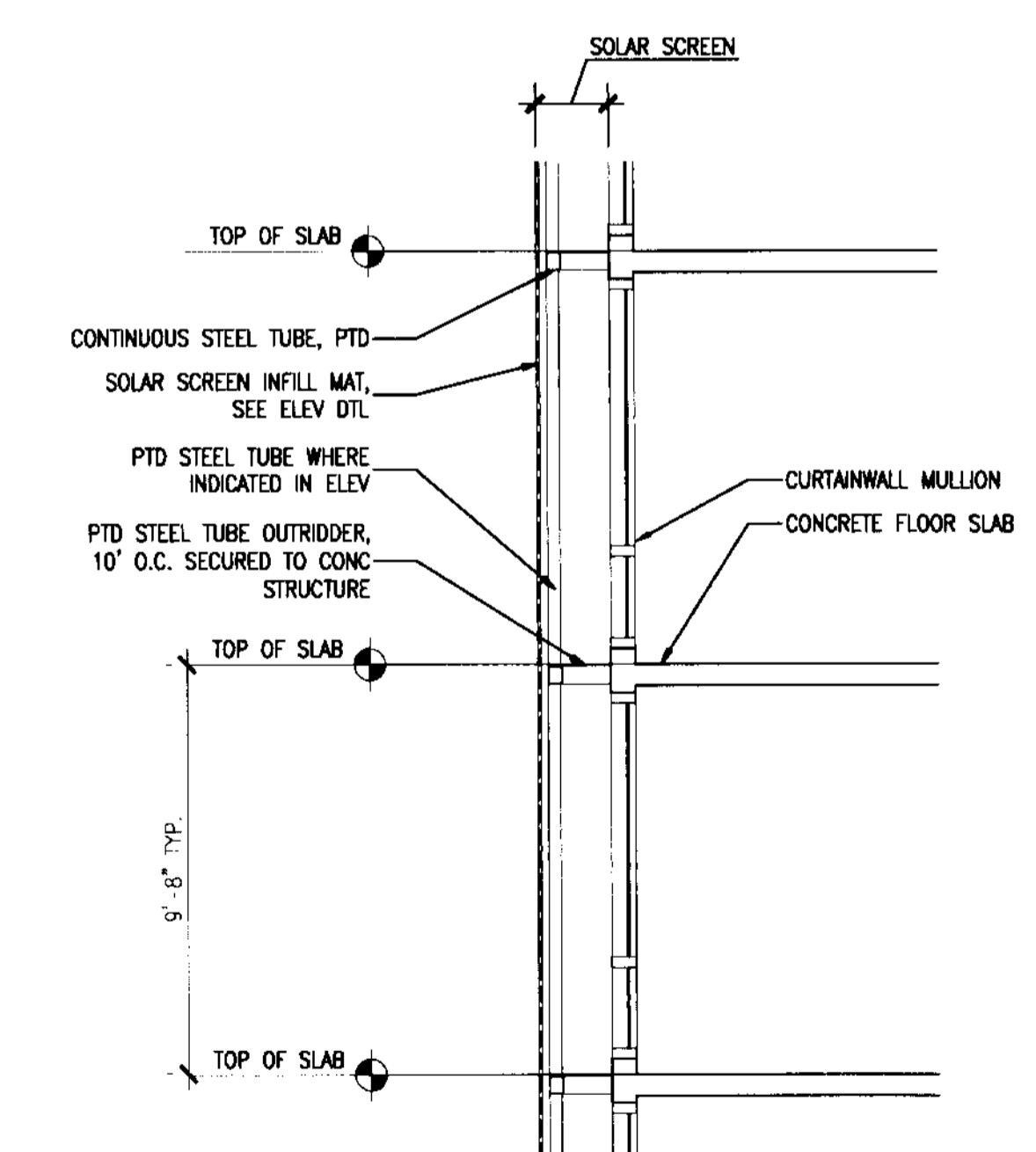
**3 BUILDING NO. 03 - SOUTH ELEVATION**  
SCALE: 1" = 20'-0"



**4 BUILDING NO. 03 - WEST ELEVATION**  
SCALE: 1" = 20'-0"



**6 SOLAR SCREEN DETAIL - ELEVATIONS**  
SCALE: 1/4" = 1'-0"



**5 SOLAR SCREEN DETAIL - SECTION**  
SCALE: 1/4" = 1'-0"