

GRAPHIC SCALE

(IN FEET)  
1 INCH = 20 FT

# TURTLE CREEK DRIVE (CULLUM ROAD)

STATE ROAD #7  
(U.S. HIGHWAY 441)

EXISTING  
SHOWROOM TO  
BE RENOVATED  
F.F. EL. 16.70

*Lc  
Buila*

- CONSTRUCTION NOTES:**
- CONTRACTOR TO MATCH EXIST. GRADES AND TO CONSTRUCT A SMOOTH TRANSITION FROM EXISTING FACILITIES TO PROPOSED.
  - CONTRACTOR TO REMOVE ALL CONSTRUCTION DEBRIS FROM CONSTRUCTION SITE AND DISPOSE PER LOCAL ORDINANCES.
  - CONTRACTOR TO ENSURE ALL CONSTRUCTION IS IN ACCORDANCE WITH CITY DESIGN STANDARDS.
  - CONTRACTOR TO SOD ALL DISTURBED AREAS. SODDING INCLUDES MAINTAINING SLOPE AND SOO UNTIL COMPLETION AND ACCEPTANCE OF THE TOTAL PROJECT OR GROWTH IS ESTABLISHED WHICHEVER COMES LAST.
  - ALL EXISTING TRAFFIC SIGNS DISTURBED DURING CONSTRUCTION SHALL BE REINSTALLED WHERE APPLICABLE BY THE CONTRACTOR.
  - THE CONTRACTOR SHALL PROTECT ALL EXISTING STRUCTURES, STORM DRAINS, UTILITIES, AND OTHER FACILITIES TO REMAIN AND SHALL REPAIR ANY DAMAGES DUE TO HIS/HER CONSTRUCTION ACTIVITIES AT NO ADDITIONAL COST TO THE OWNER.
  - NOTIFY SUNSHINE STATE ONE CALL (1-800-432-4770) PRIOR TO CONSTRUCTION.
  - PROJECT BASED ON DESIGN SURVEY PREPARED BY OTHERS. DURATION OF CONSTRUCTION IN ACCORDANCE WITH FOOT STANDARD INDEX NO. 800.
  - THE CONTRACTOR SHALL NOT ENCROACH ONTO PRIVATE PROPERTY WITHOUT EASEMENTS NECESSARY FOR COMPLETION OF THE WORK.
  - THE EXISTING UNDERGROUND UTILITIES SHOWN ARE PER ABOVE GROUND SURVEY DATA AND UTILITY AS-BUILT DATA. THIS INFORMATION DOES NOT WARRANT EXACT SIZE AND LOCATION OF THE UTILITIES. ALSO, THERE MAY BE ADDITIONAL UTILITIES WITHIN THE LIMITS OF CONSTRUCTION THAT MAY BE AFFECTED. CONTRACTOR SHALL BE RESPONSIBLE FOR MAINTAINING AND PROTECTING EXISTING UTILITIES DURING THE COURSE OF CONSTRUCTION.
  - PLEASE SEE MEP PLANS FOR CONTINUATION OF ROOF LEADERS.
  - 2.0% MAXIMUM SLOPE ON HANDICAP SPACES AND ADA ACCESS WAYS.
  - ALL SIDEWALKS SHOULD HAVE A MAXIMUM CROSS SLOPE OF 2.0%.

## LEGEND

- XXXX- PROPOSED SPOT ELEVATION
- 15.0- EXISTING SPOT ELEVATION
- PROPOSED FLOW ARROW

## PAVEMENT LEGEND

- [Pattern] PROPOSED CONCRETE
- [Pattern] PROPOSED REGULAR DUTY ASPHALT 1 1/2" TYPE III 6" LIME ROCK LBR 10L 12" STAB. SUBGRADE LBR 10L



**BOHLER ENGINEERING**



CORPORATE OFFICE  
1000 CORPORATE DRIVE, SUITE 250  
WEST LAKEHURST, FL 33334  
TEL: (954) 202-7000  
FAX: (954) 202-7076  
www.bohlerengineering.com

PROJECT MANAGERS  
• SOUTHBRIDGE, MA • DOWIE, MO  
• ALBANY, NY • STURDIVANT, VA  
• HUNTSVILLE, AL • HUNTSVILLE, AL  
• CENTREVILLE, VA • TAMPA, FL

ENVIRONMENTAL CONSULTANTS  
LANDSCAPE ARCHITECTS

REV.	DATE	COMMENT	BY
1	2-17-2011	BIKE RACK AND SOUTH SIDEWALK ADDITION	NAB
2	2-22-2011	MEANDERING SIDEWALK	NAB

PROJECT No.: F100015  
DRAWN BY: AAM  
CHECKED BY: JMG  
DATE: AS NOTED  
SCALE: F100016-ENG PLAN  
CAD I.D.: F100016-ENG PLAN

PROJECT:  
**MERCEDES-BENZ OF COCONUT CREEK**  
FOR  
**HODGEN CONSTRUCTION**  
4250 NORTH STATE ROAD 7  
CITY OF CORAL SPRINGS  
BROWARD COUNTY, FLORIDA

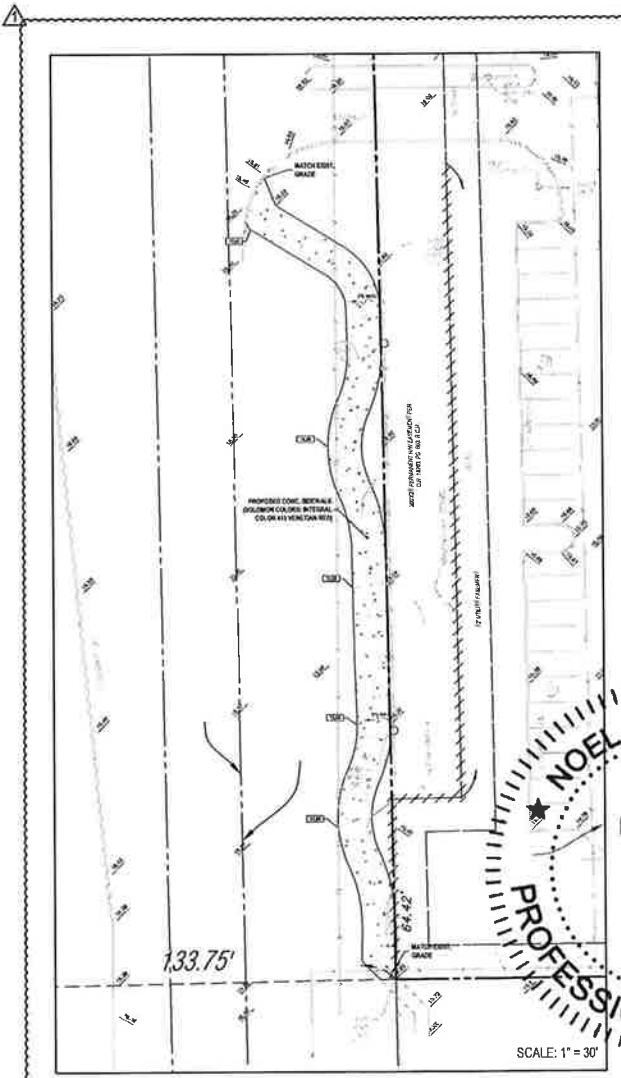
**BOHLER ENGINEERING**

RADICE III  
1000 CORPORATE DRIVE, SUITE 250  
WEST LAKEHURST, FL 33334  
TEL: (954) 202-7000  
FAX: (954) 202-7076  
www.bohlerengineering.com

**NOEL A. BARNETT**  
LICENSE  
No. 72006  
★  
PROFESSIONAL ENGINEER  
February 24, 2011  
FLORIDA LICENSE NO. 72006  
FLORIDA BUSINESS AND PROFESSIONAL AUTO. NO. 23258

STATE OF FLORIDA  
ENGINEERING PLAN  
SHEET TITLE  
NUMBER  
**C-4**

SCALE: 1" = 30'



Printed on Thursday, February 24, 2011, 10:38 AM by Noel Barnett  
C:\WORK\110710\110710.dwg - COCONUT CREEK\110710.dwg - 110710.dwg - LAYOUT