

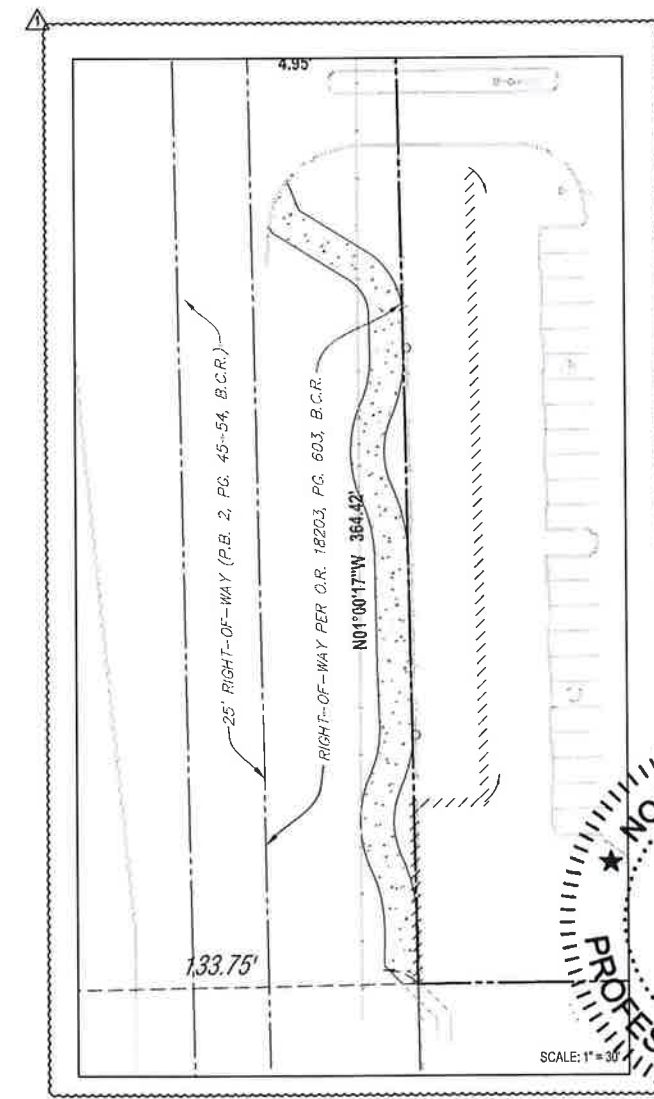
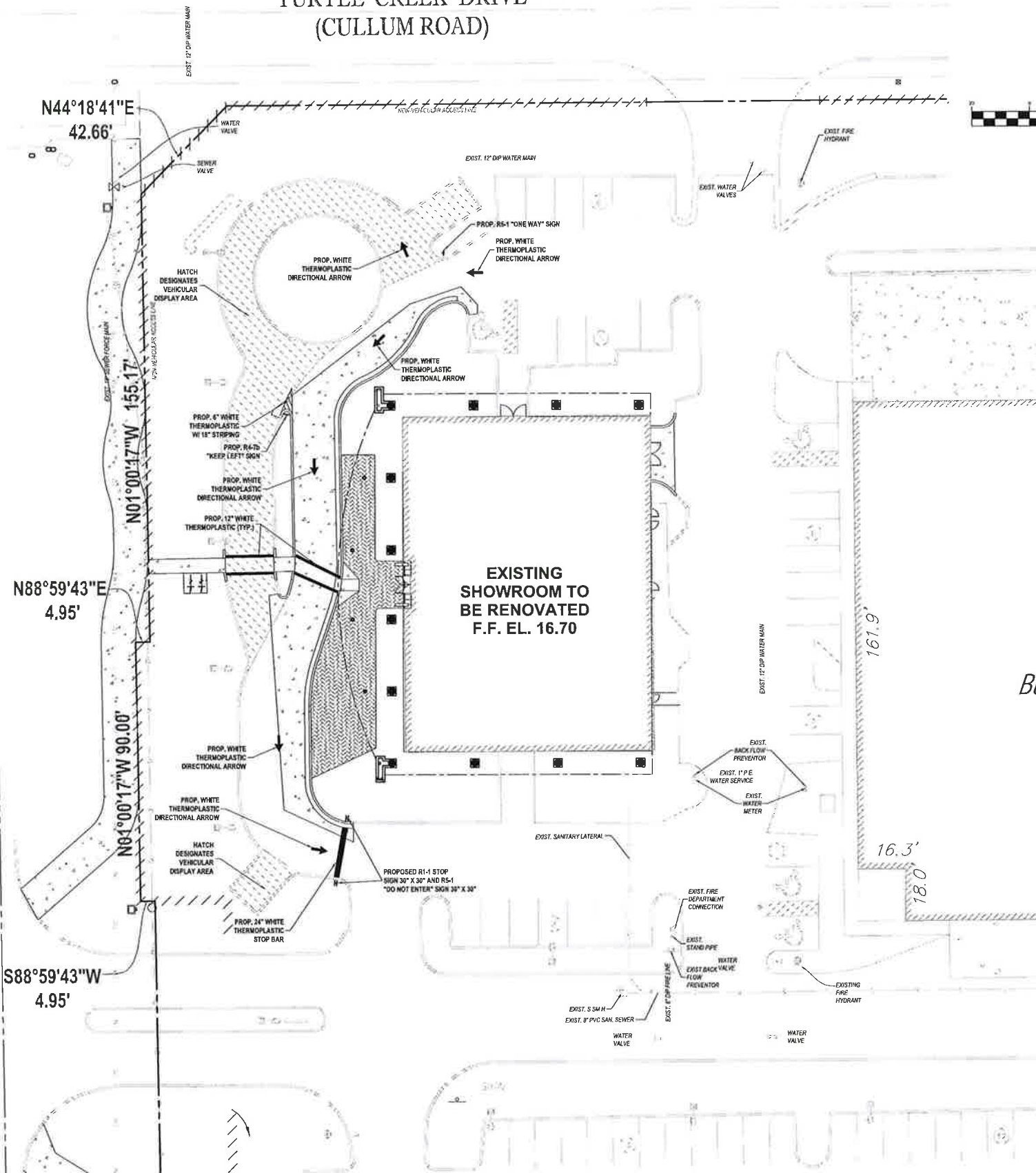
L40.110

STATE ROAD #7
 (U.S. HIGHWAY 441)

TURTLE CREEK DRIVE
 (CULLUM ROAD)



- NOTES:
- ALL R1-1 SIGNING SHALL BE FABRICATED USING DIAMOND GRADE SHEETING AS PER BROWARD COUNTY TRAFFIC ENGINEERING STANDARD. (CURRENT EDITION)
 - ALL TRAFFIC CONTROL DEVICES MAINTAINED BY BROWARD COUNTY, THAT ARE REMOVED OR DAMAGED BY CONSTRUCTION, SHALL BE REPLACED USING CURRENT BROWARD COUNTY TRAFFIC ENGINEERING DIVISION STANDARDS.
 - ALL PAVEMENT MARKINGS AND SIGNING DAMAGED DURING CONSTRUCTION, SHALL BE RESTORED TO BROWARD COUNTY TRAFFIC ENGINEERING STANDARD. (CURRENT EDITION)



BOHLER ENGINEERING

CORPORATE OFFICE
 W. BARNETT, NJ

CIVIL & CONSULTING ENGINEERS
 SURVEYORS
 PROJECT MANAGERS
 ENVIRONMENTAL CONSULTANTS
 LANDSCAPE ARCHITECTS

OFFICES:
 SOUTH MIAMI, FL
 BOYD HAVEN, FL
 PALM BEACH, FL
 PALM SPRINGS, FL
 WEST PALM BEACH, FL
 WINTER HAVEN, FL
 TAMPA, FL

REVISIONS:

REV.	DATE	COMMENTS	BY:
1	2-17-2011	BIKE RACK AND SOUTH SIDEWALK ADDITION	NAB
2	2-22-2011	MEANDERING SIDEWALK	NAB

PROJECT NO: F100016
 DRAWN BY: AMM
 CHECKED BY: JMG
 DATE: AS NOTED
 CAD ID: F100016-PMS

PROJECT:

MERCEDES-BENZ OF COCONUT CREEK

FOR

HODGEN CONSTRUCTION

4250 NORTH STATE ROAD 7
 CITY OF CORAL SPRINGS
 BROWARD COUNTY, FLORIDA

BOHLER ENGINEERING

NOEL A. BARNETT

LICENSE

No. 72006

PROFESSIONAL ENGINEER

FLORIDA LICENSE NO. 72006
 FLORIDA BUSINESS CERTIFICATE NO. 1064, EXPIRES 12/31/11

SHEET TITLE:

PAVEMENT MARKING & SIGNAGE PLAN

PROJECT NUMBER:

C-6