

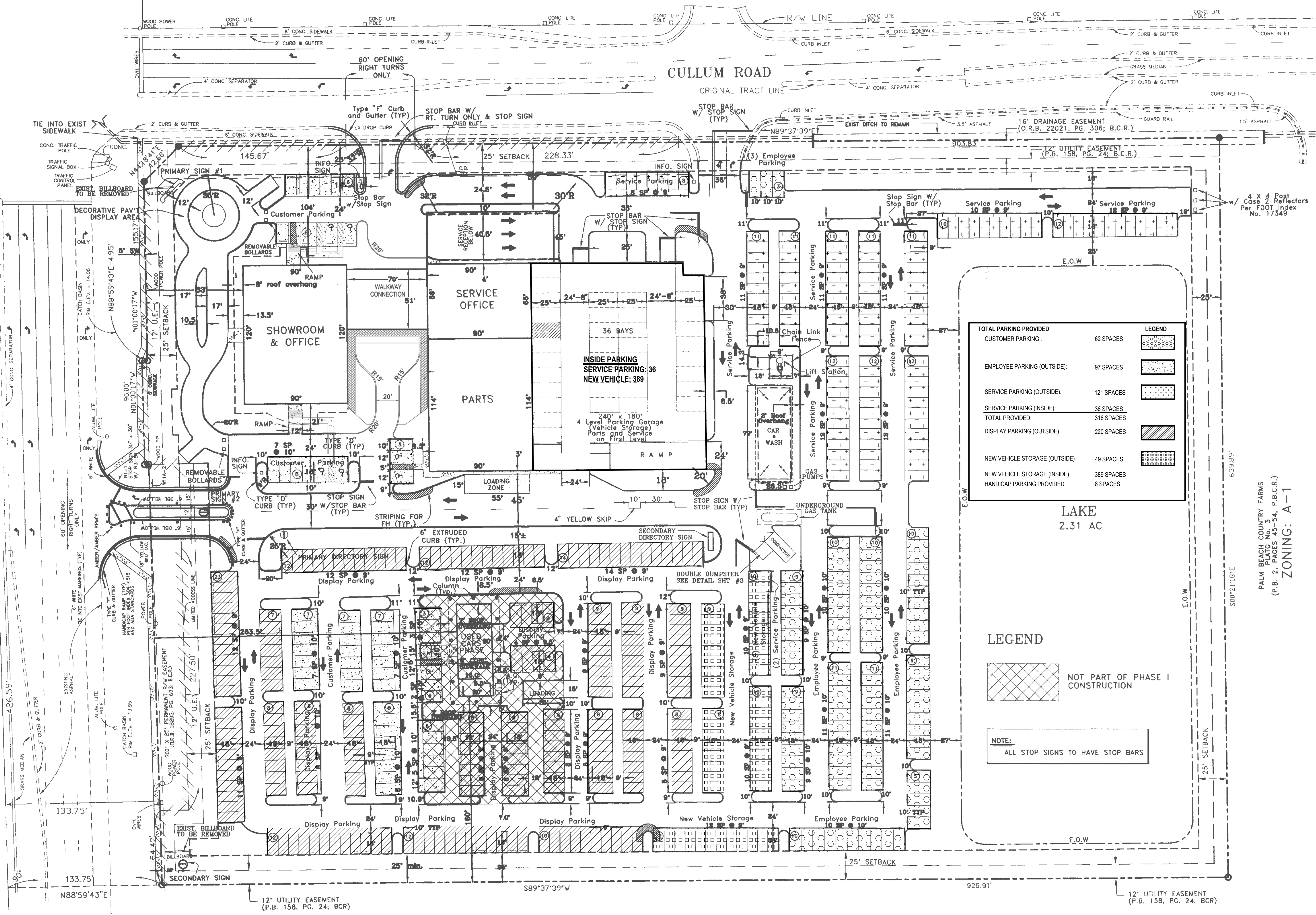
PALM BEACH COUNTY FARMS  
 FLAT No. 3  
 (P.B. 2, PAGES 45-54, P.B.C.R.)  
 ZONING PCD



ZONING B2

U.S. 441

STATE ROAD NO. 7



TOTAL PARKING PROVIDED	
CUSTOMER PARKING:	62 SPACES
EMPLOYEE PARKING (OUTSIDE):	97 SPACES
SERVICE PARKING (OUTSIDE):	121 SPACES
SERVICE PARKING (INSIDE):	36 SPACES
TOTAL PROVIDED:	316 SPACES
DISPLAY PARKING (OUTSIDE):	220 SPACES
NEW VEHICLE STORAGE (OUTSIDE):	49 SPACES
NEW VEHICLE STORAGE (INSIDE):	389 SPACES
HANDICAP PARKING PROVIDED:	8 SPACES

**LEGEND**

[Hatched Box] NOT PART OF PHASE I CONSTRUCTION

**NOTE:**  
ALL STOP SIGNS TO HAVE STOP BARS

LAKE  
2.31 AC

COMMERCE CENTER OF COCONUT CREEK  
 (P.B. 131, PAGES 30, B.C.R.)  
 ZONING: B-4

**Sun-Tech Engineering, Inc.**

3407 N.W. 4th Avenue Suite 250  
 Ft. Lauderdale, FL 33309  
 Phone (954)568-2282  
 Fax (954)568-2128

**REVISIONS**

NO.	DATE	DESCRIPTION
1	09/26/96	REVISED PER DECISION
2	09/03/96	REVISED PER DECISION
3	09/04/96	REVISED PER DECISION
4	03/14/97	INCORPORATE LIFT STATION
5	05/08/97	REPLACE W/NO. 1000
6	07/22/97	REVISED PER DECISION

GARY FRONRATH  
 CHRYSLER - PLYMOUTH - JEEP - EAGLE  
 COCONUT CREEK  
 FLORIDA  
 SITE PLAN

DATE: 07/96

SCALE: 1"=40'

DESIGNED BY: M.J.G.

DRAWN BY: C.R.L.

JOB NUMBER: 96-2072

SHEET 1 OF 1

SEAL  
 AUG 04 1997

OVERALL SITE PLAN  
**C-2A**