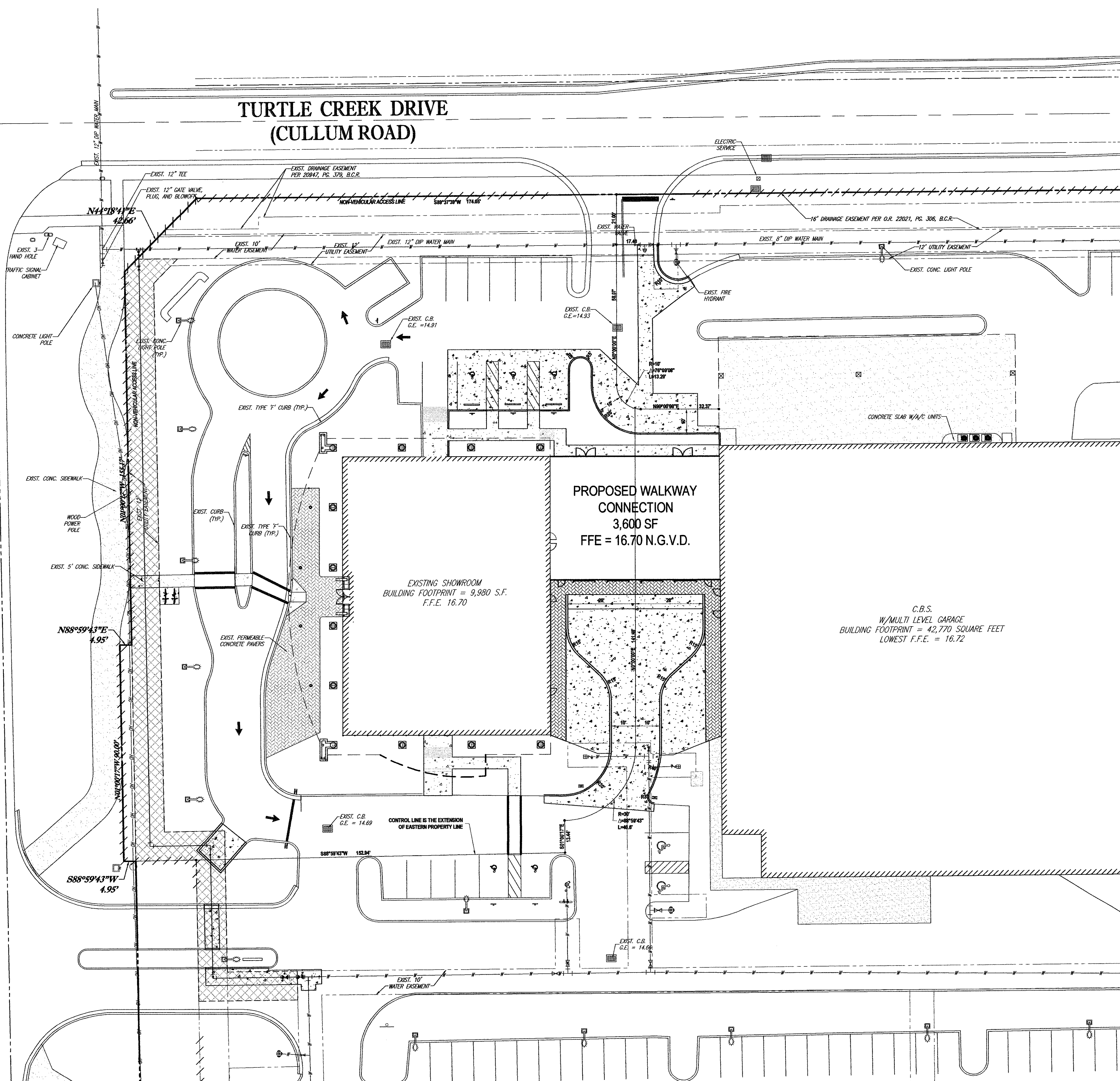
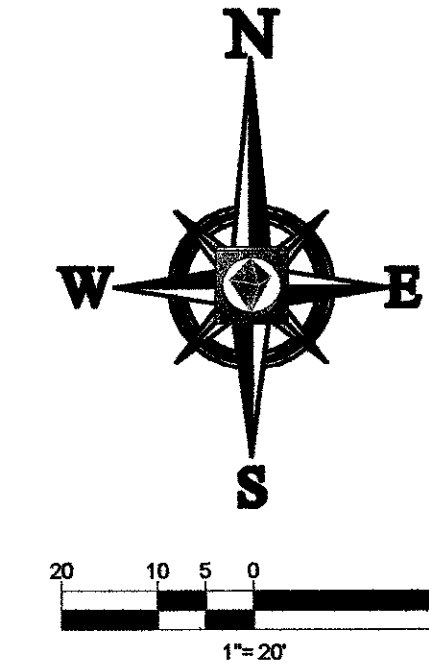


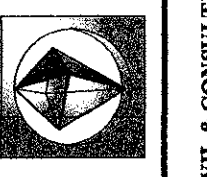
Printed on Wednesday, August 10, 2011, 10:09 AM by Noel Barnet
D:\USERS\NOELB\PROJECTS\COCONUT CREEK ADDITION\4-FLORIDA-GEOMETRIC CONTROL\C-3.DWG

STATE ROAD #7
(U.S. HIGHWAY 441)

TURTLE CREEK DRIVE
(CULLUM ROAD)



BOHLER ENGINEERING



CORPORATE OFFICE:
WARREN, NJ
OFFICES:
BONNE MD
SOUTH-BOROUGH VA
LITTLETON CO
WARREN NJ
WARREN VA
BOUNSBORO NJ
KINGSTON NY
KONOMAHA IA
SEWATER VALLEY PA
TAMPA FL
CIVIL & CONSULTING ENGINEERS
SURVEYORS
PROJECT MANAGERS
ENVIRONMENTAL CONSULTANTS
LANDSCAPE ARCHITECTS

REVISIONS:

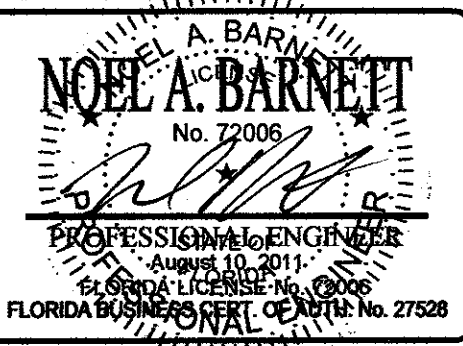
| REV. | DATE | COMMENT | BY |
|------|------------|----------------------------|-----|
| 1 | 05-24-2011 | FIRST SITE PLAN SUBMITTAL | NAB |
| 2 | 06-25-2011 | SECOND SITE PLAN SUBMITTAL | NAB |
| 3 | 08-11-2011 | THIRD SITE PLAN SUBMITTAL | NAB |
| | | | |
| | | | |
| | | | |
| | | | |
| | | | |
| | | | |
| | | | |

PROJECT: F100016
DRAWN BY: LIT
CHECKED BY: NAB
DATE: 05-24-2011
SCALE: AS NOTED
CAD I.D.: 04-F100016-GEOMETRIC CONTROL

PROJECT:
MERCEDES-BENZ OF COCONUT CREEK ADDITION
FOR
HODGEN CONSTRUCTION
4250 NORTH STATE ROAD 7
CITY OF COCONUT CREEK
BROWARD COUNTY, FLORIDA



RADICE III
1000 CORPORATE DRIVE, SUITE 250
FORT LAUDERDALE, FL 33334
PH: (954) 202-7000
FX: (954) 202-7070
www.BohlerEngineering.com



SHEET TITLE:
GEOMETRIC CONTROL PLAN
SHEET NUMBER:
C-3