

PROPOSED ELEVATION

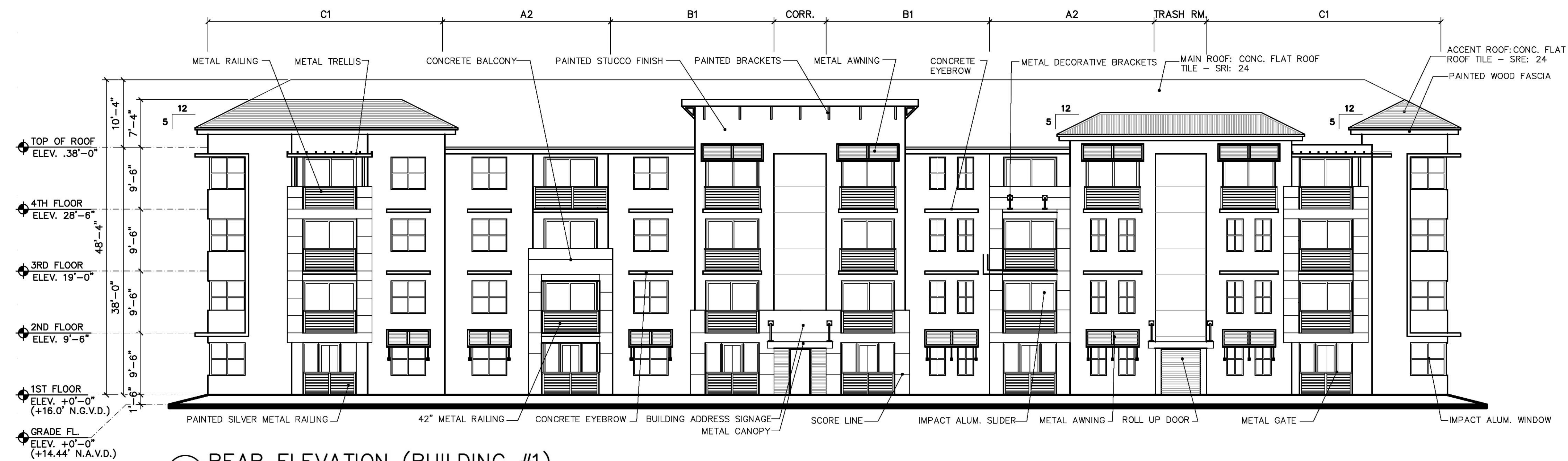


B REAR ELEVATION (BUILDING #1)
INTERNAL TO SITE

GENERAL REVISION NARRATIVE :

1. REMOVED TRELIS & ADD ROOF O.H.
2. ADDED DECOR. BRACKETS.
3. CHANGED RAILING STYLE TO MESH.
4. MODIFIED ROOF LINE.
5. SHOW DOWNSPOUTS.
6. TRASH CHUTE PROJECTION ABOVE ROOF.
7. REPLACED FRENCH DOORS WITH HORIZONTAL SLIDERS AT GROUND FLOOR PATIOS. MORE GLAZING.
8. REMOVED GROUND FLOOR PATIO RAILINGS.
9. LESS RECESS AT TRASH / ELEC RM. TO 30'.

APPROVED ELEVATION



B REAR ELEVATION (BUILDING #1)
INTERNAL TO SITE

SCALE: 3/32" = 1'-0"

REVISIONS	BY
o SITE PLAN RESUBMITTAL 02/19/14	B.H.
o SITE PLAN RESUBMITTAL#2 04/08/14	
o SITE PLAN RESUBMITTAL#3 07/17/14	
o SITE PLAN RESUBMITTAL#4 08/20/14	
o SITE PLAN AMENDMENT 10/29/15	
o SITE PLAN AMENDMENT 01/08/16	

MIDTOWN RESIDENCES AT COCONUT CREEK
 FOR: FC LAND INVESTMENT A, L.L.C.
 LOCATED AT: COCONUT CREEK, FLORIDA

JOSE I. SAUMELL
 ARO013085

MSA ARCHITECTS, INC.
 MIAMI OFFICE
 7695 SW 104th ST.
 SUITE 100
 MIAMI, FLORIDA 33156
 (305) 273-9911
 HOLLYWOOD OFFICE
 HOLLYWOOD, FLORIDA 33020
 (954) 925-6030

MSA ARCHITECTS
 ARCHITECTURE & PLANNING

MSA ARCHITECTS, INC. THE ARCHITECTURAL DESIGN AND DETAIL DRAWINGS FOR THIS BUILDING AND/OR OVERALL PROJECT ARE THE LEGAL PROPERTY OF AND ALL RIGHTS ARE RESERVED BY THE ARCHITECT. THEIR USE FOR REPRODUCTION, CONSTRUCTION, OR DISTRIBUTION IS PROHIBITED UNLESS AUTHORIZED IN WRITING BY THE ARCHITECT.

DRAWN	
CHECKED	
DATE	08/20/2014
SCALE	AS SHOWN
JOB NO.	1528.PRJ
SHEET	1528-A-0.1.DWG