

PROPOSED ELEVATION

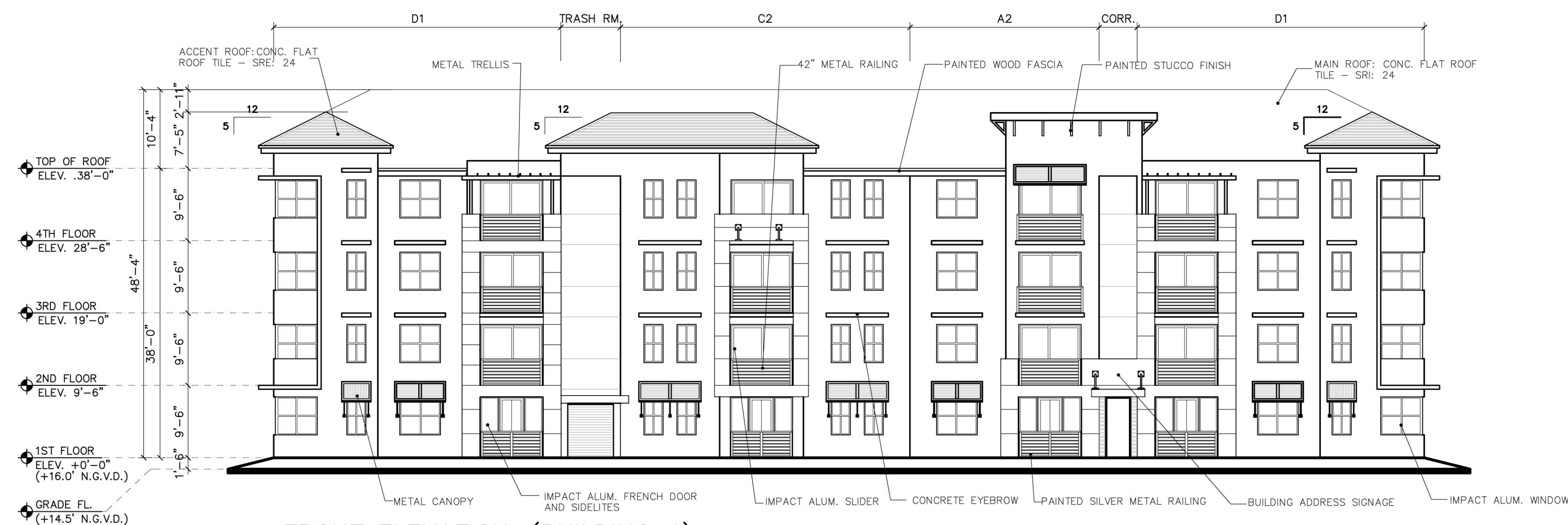


(A) FRONT ELEVATION—(BUILDING 4)
INTERNAL TO SITE
SCALE: 3/32"=1'-0"

GENERAL REVISION NARRATIVE :

1. BUILDING REVERSED
2. REMOVED TRELIS & ADD ROOF O.H.
3. ADDED DECOR. BRACKETS.
4. CHANGED RAILING STYLE TO MESH.
5. MODIFIED ROOF LINE.
6. SHOW DOWNSPOUTS.
7. REPLACED FRENCH DOORS WITH HORIZONTAL SLIDERS AT GROUND FLOOR PATIOS. MORE GLAZING.
8. REMOVED GROUND FLOOR PATIO RAILINGS.

APPROVED ELEVATION



(A) FRONT ELEVATION—(BUILDING 4)
INTERNAL TO SITE
SCALE: 3/32"=1'-0"

REVISIONS	BY
o SITE PLAN RESUBMITTAL 02/19/14	B.H.
o SITE PLAN RESUBMITTAL#2 04/08/14	
o SITE PLAN RESUBMITTAL#3 07/17/14	
o SITE PLAN RESUBMITTAL#4 08/20/14	
o SITE PLAN ADMIN. AMENDMENT 10/29/15	
o SITE PLAN GARDEN AMENDMENT 01/08/16	
o COMMENTS	

MIDTOWN RESIDENCES AT COCONUT CREEK
FOR: FC LAND INVESTMENT A, LLC.
LOCATED AT: COCONUT CREEK, FLORIDA

JOSE I. SAUMELL
AR0013085

MSA ARCHITECTS, INC.
ARCHITECTS
MIAMI OFFICE
7695 SW 104th ST.
MIAMI, FLORIDA 33156
(305) 273-9911
HOLLYWOOD OFFICE
HOLLYWOOD, FLORIDA 33020
(954) 925-6030

MSA ARCHITECTS
ARCHITECTURE & PLANNING

© 2011 MSA ARCHITECTS, INC. THE ARCHITECTURAL DESIGN AND DETAIL DRAWINGS FOR THIS BUILDING AND/OR OVERALL PROJECT ARE THE LEGAL PROPERTY OF AND ALL RIGHTS ARE RESERVED BY THE ARCHITECT. THEIR USE FOR REPRODUCTION, CONSTRUCTION, OR DISTRIBUTION IS PROHIBITED UNLESS AUTHORIZED IN WRITING BY THE ARCHITECT.

DRAWN	
CHECKED	
DATE	08/20/2014
SCALE	AS SHOWN
JOB NO.	1528.PRJ
SHEET	1528-A-01.DWG