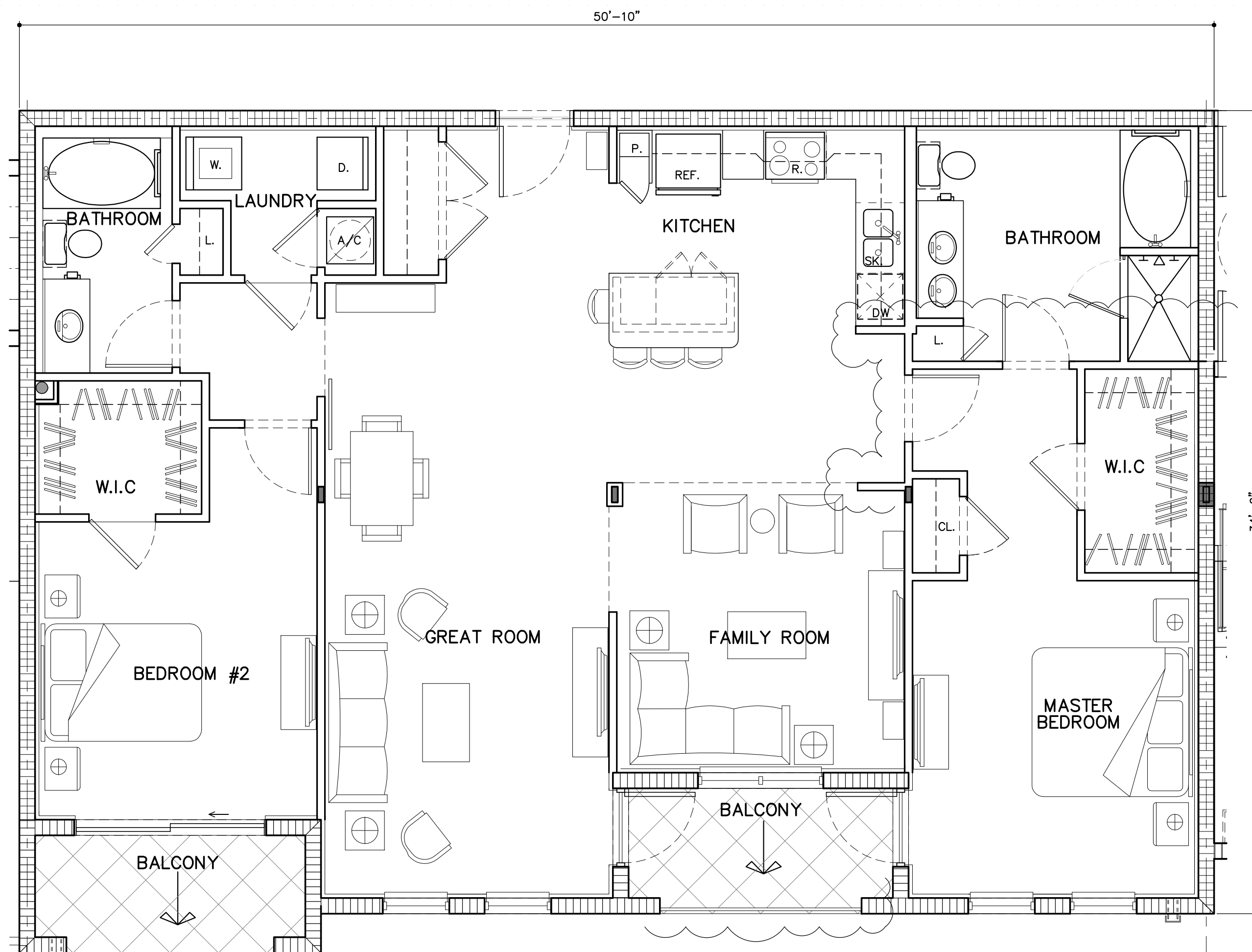
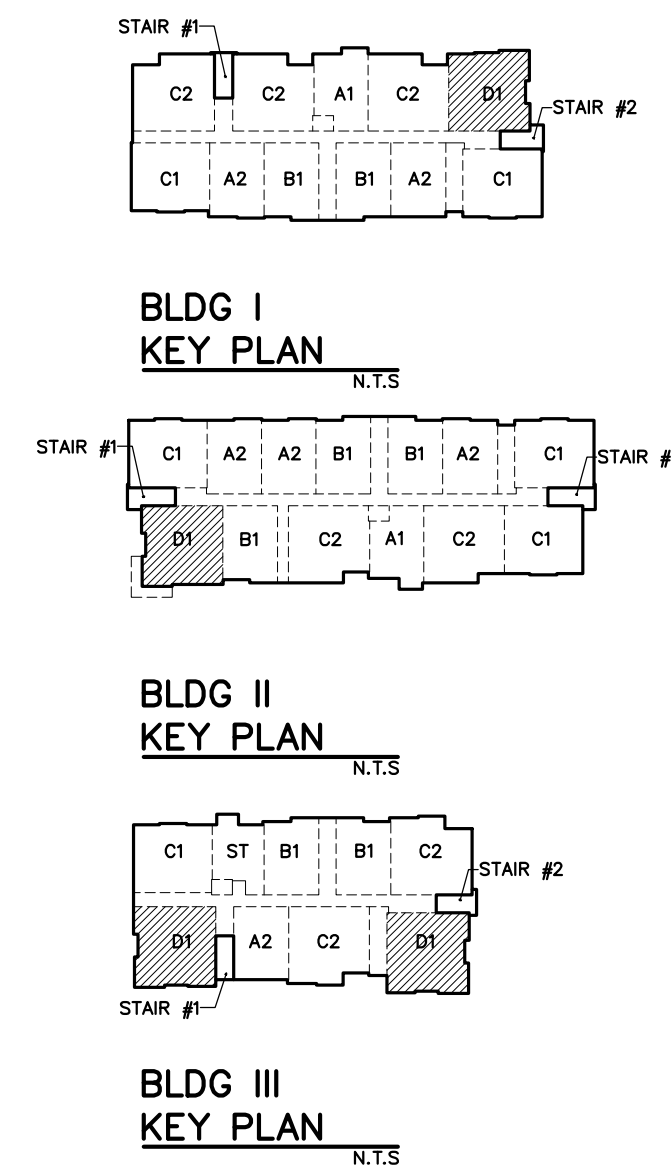
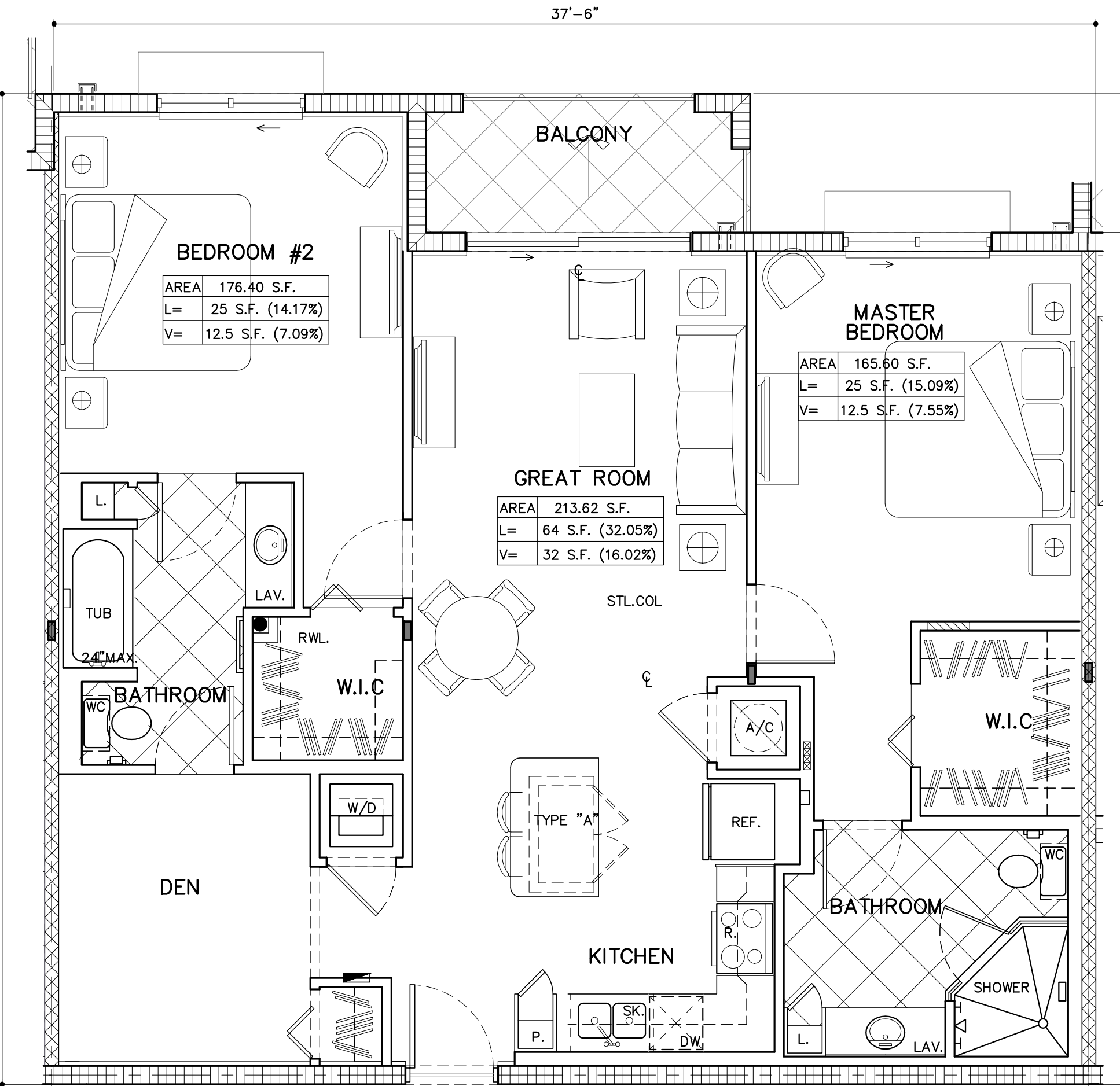
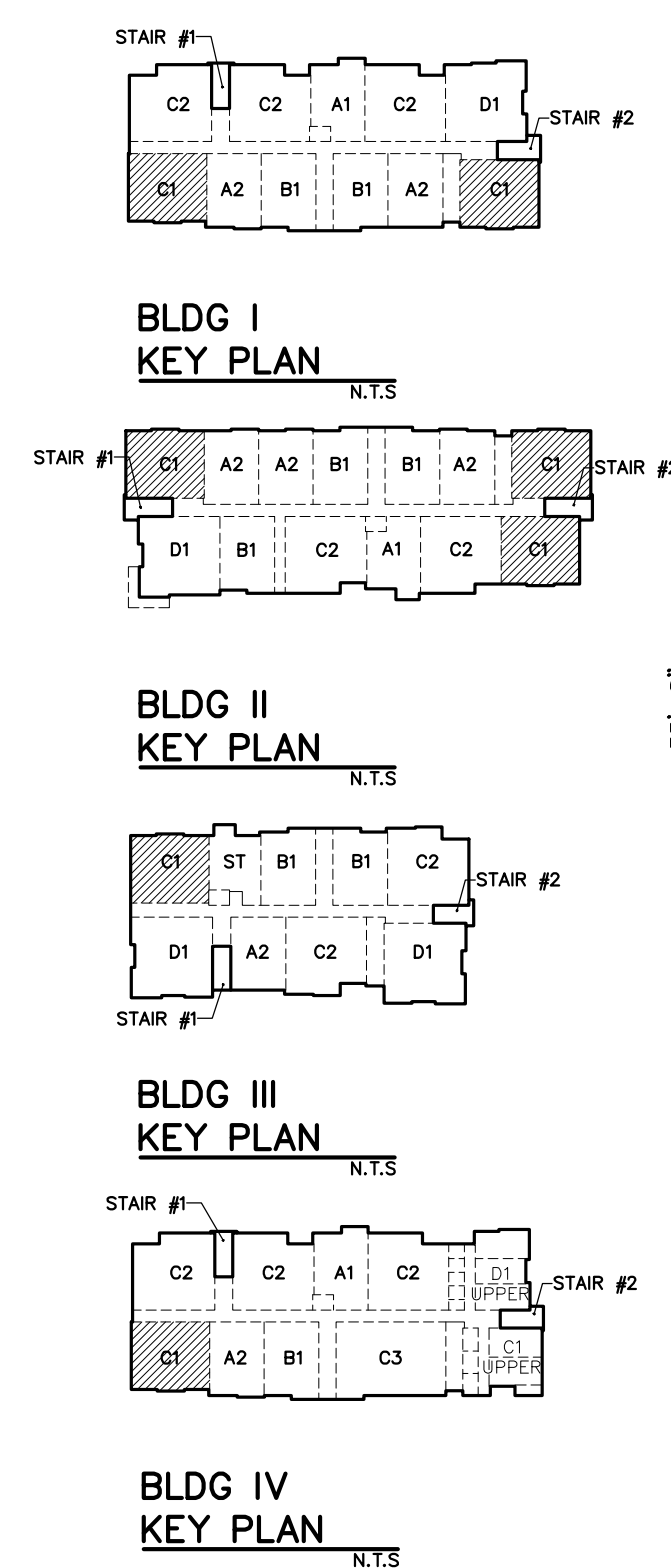


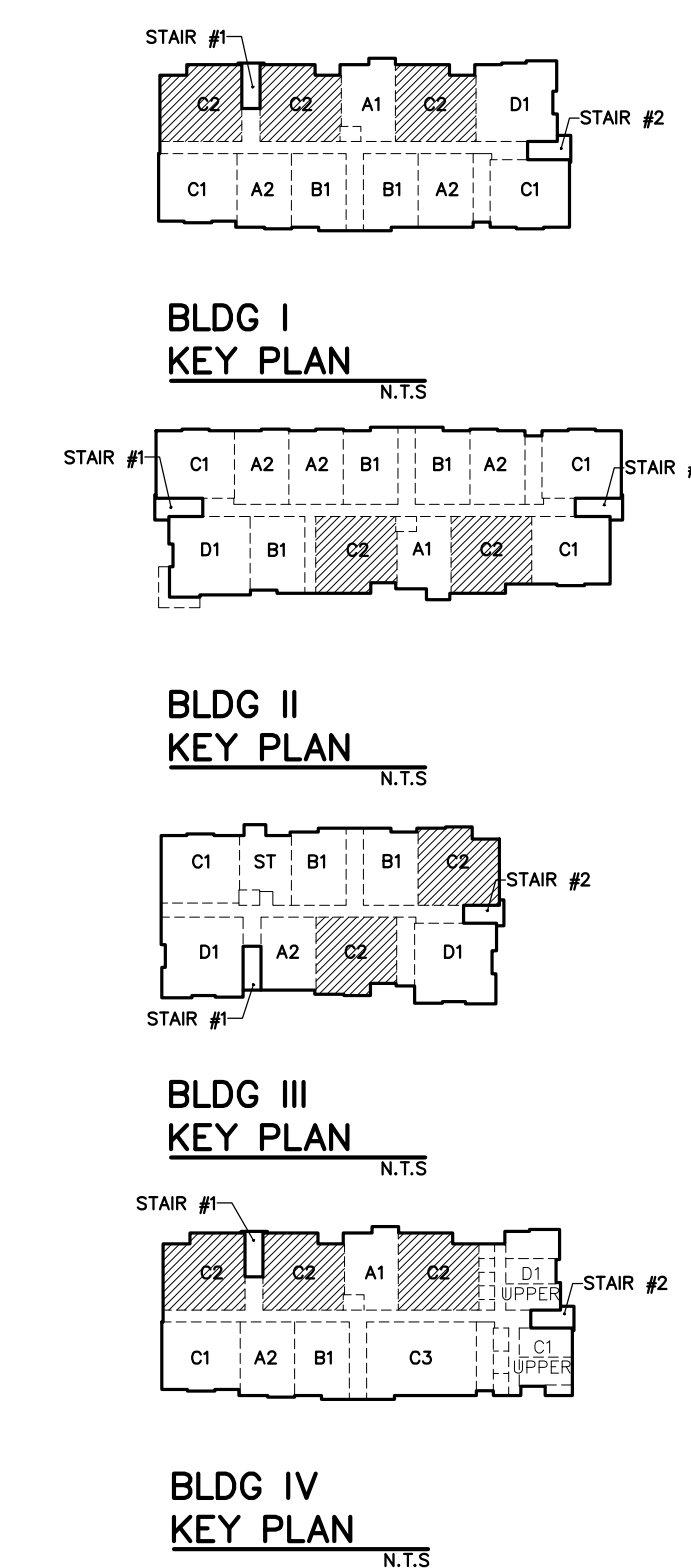
**UNIT D1** (3 BD/2 BTH)  
 TOTAL A/C AREA: 1,289.4 SQ. FT.  
 BALCONY AREA: 62.6 SQ. FT.



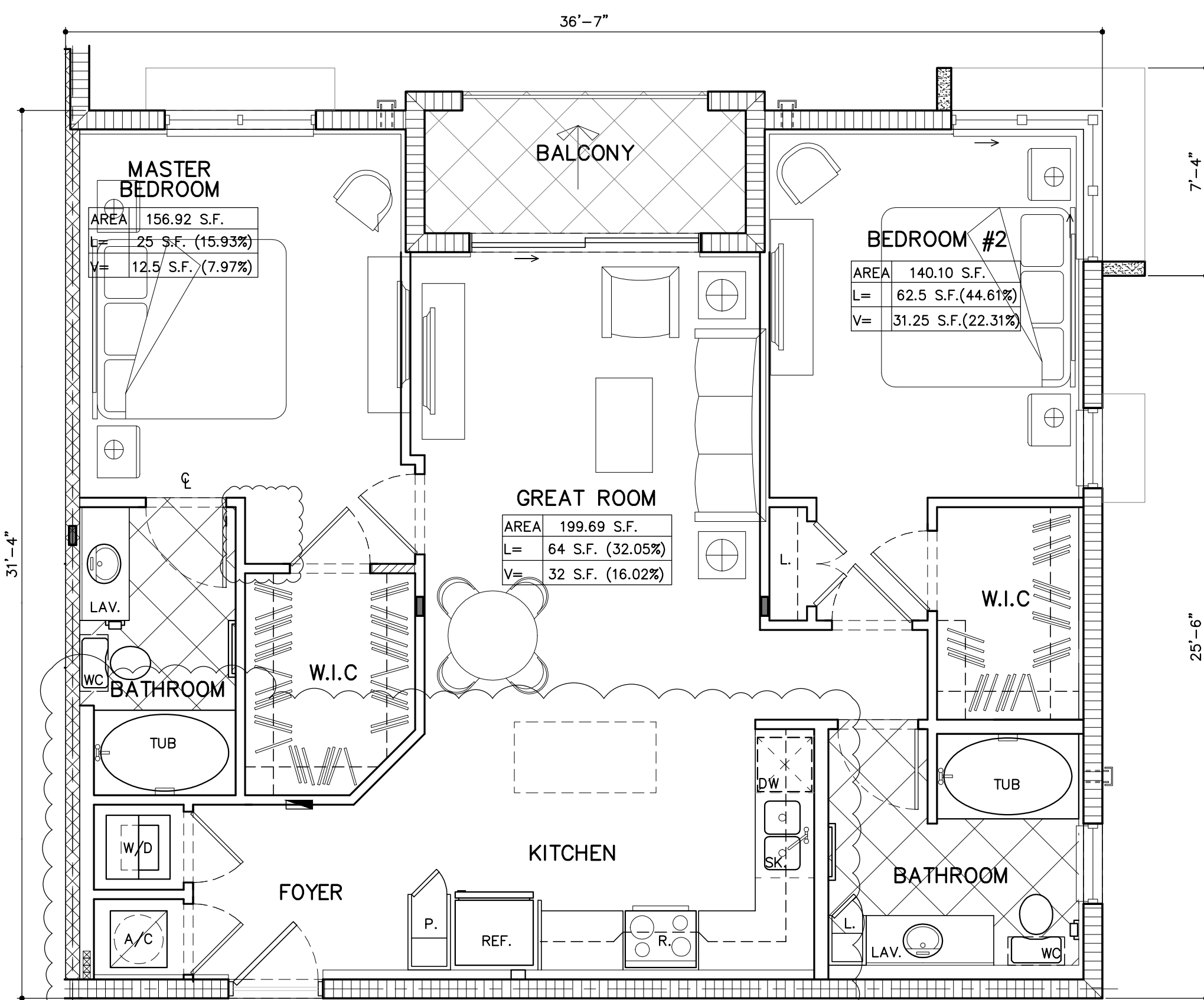
**UNIT C3** (2 BD/2 BTH/FAMILY)  
 TOTAL A/C AREA: 1,606 SQ. FT.  
 BALCONY AREA: 120.8 SQ. FT.



**UNIT C2** (2 BD/2 BTH/DEN)  
 TOTAL A/C AREA: 1,212.3 SQ. FT.  
 BALCONY AREA: 58.3 SQ. FT.



**BLDG UNIT PLANS** UNIT C1, C2, D1  
 SCALE 1/4" = 1'-0"



**UNIT C1** (2 BD/2 BTH)  
 TOTAL A/C AREA: 1077.2 SQ. FT.  
 BALCONY AREA: 57.6 SQ. FT.

REVISIONS	BY
SITE PLAN RESUBMITTAL 02/19/14	
SITE PLAN RESUBMITTAL#2 04/08/14	
SITE PLAN RESUBMITTAL#3 07/17/14	
SITE PLAN RESUBMITTAL#4 08/20/14	
SITE PLAN ADMIN. AMENDMENT 10/29/15	
SITE PLAN ADMIN. AMENDMENT COMMENTS 01/08/16	

**MIDTOWN RESIDENCES AT COCONUT CREEK**  
 FOR: FC LAND INVESTMENT A, LLC.  
 LOCATED AT: COCONUT CREEK, FLORIDA

JOSE I. SAUMELL  
 AR0013085

MSA ARCHITECTS, INC.  
 44000809  
 MIAMI OFFICE  
 SUITE 100 64th ST.  
 MIAMI, FLORIDA 33156  
 (305) 273-9911  
 HOLLYWOOD OFFICE  
 303 SOUTH 21st AVE.  
 MIAMI, FLORIDA 33020  
 (954) 925-6030



DRAWN	
CHECKED	
DATE	08/20/2014
SCALE	AS SHOWN
JOB NO.	1528.PRJ
SHEET	1528-A-4.2.DWG