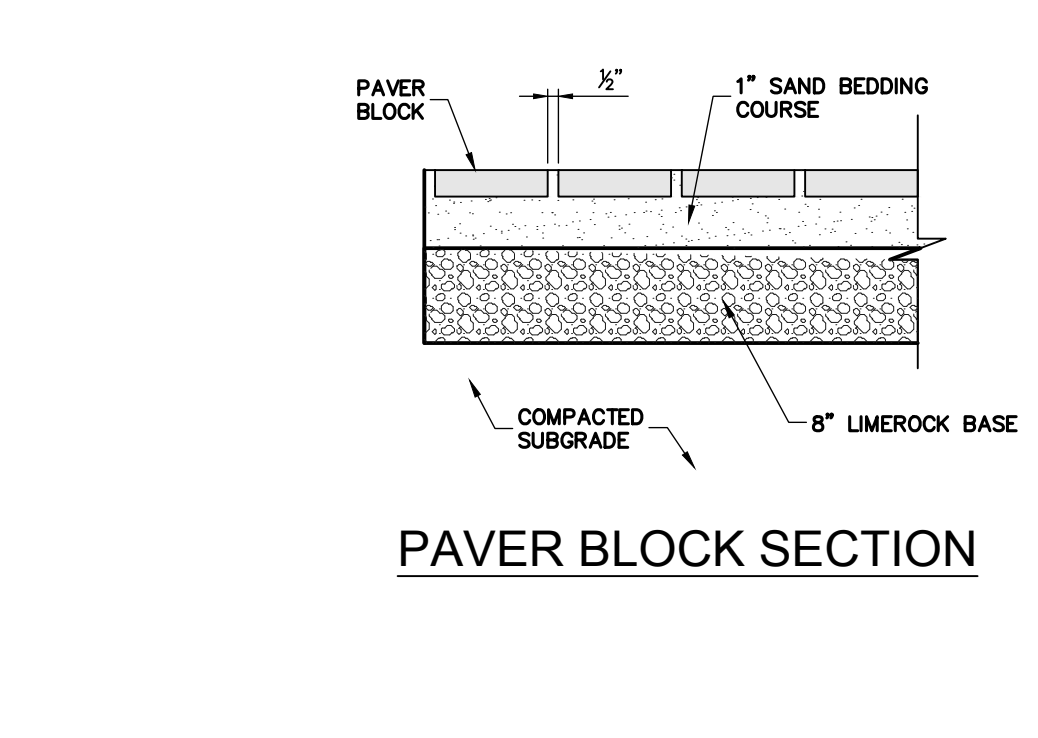
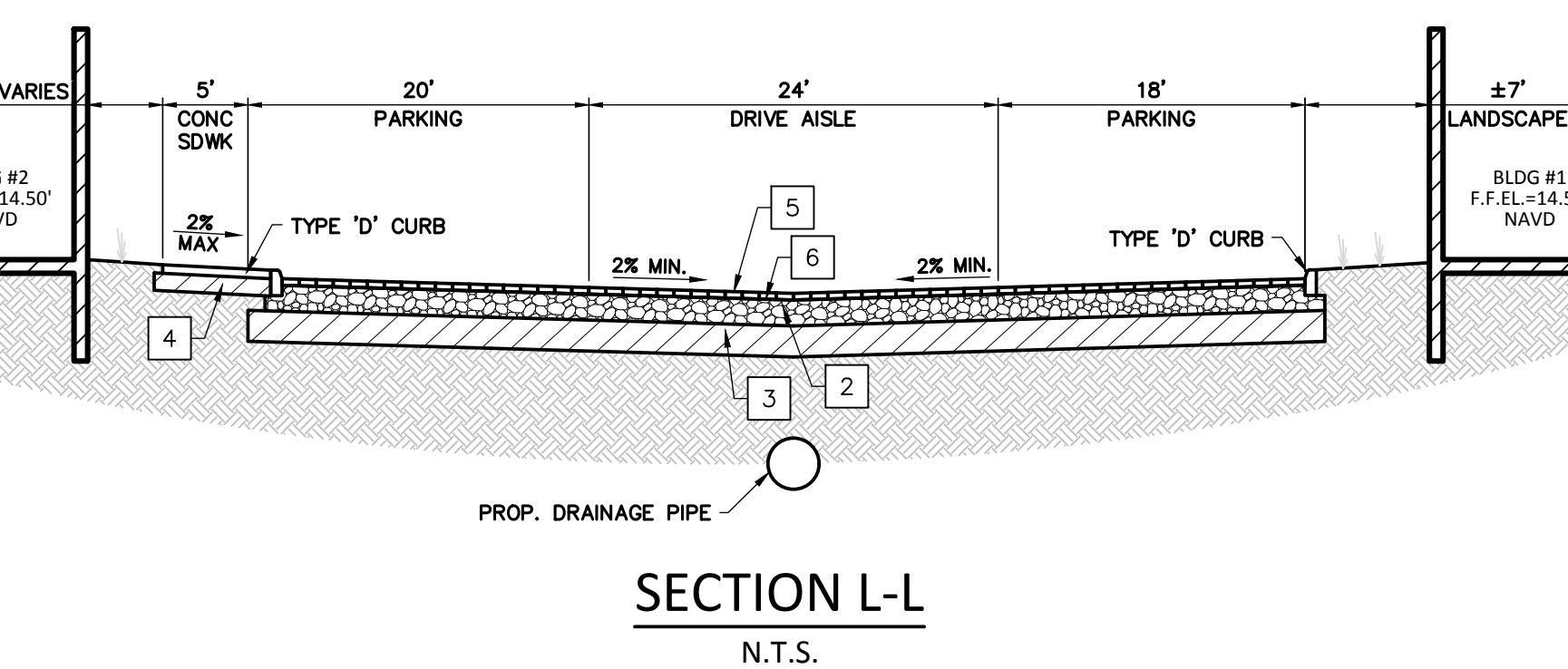
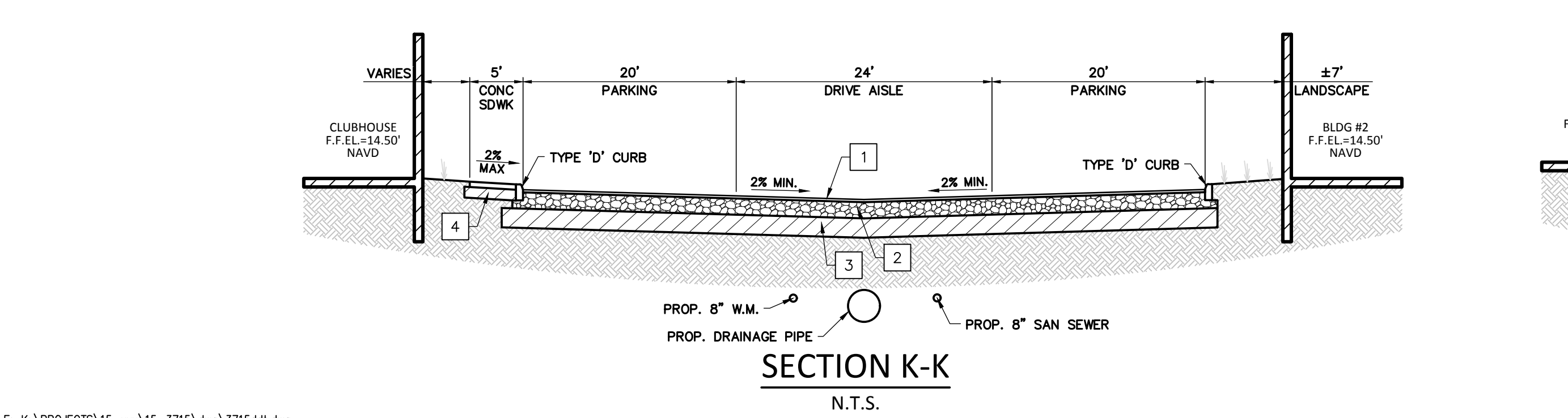
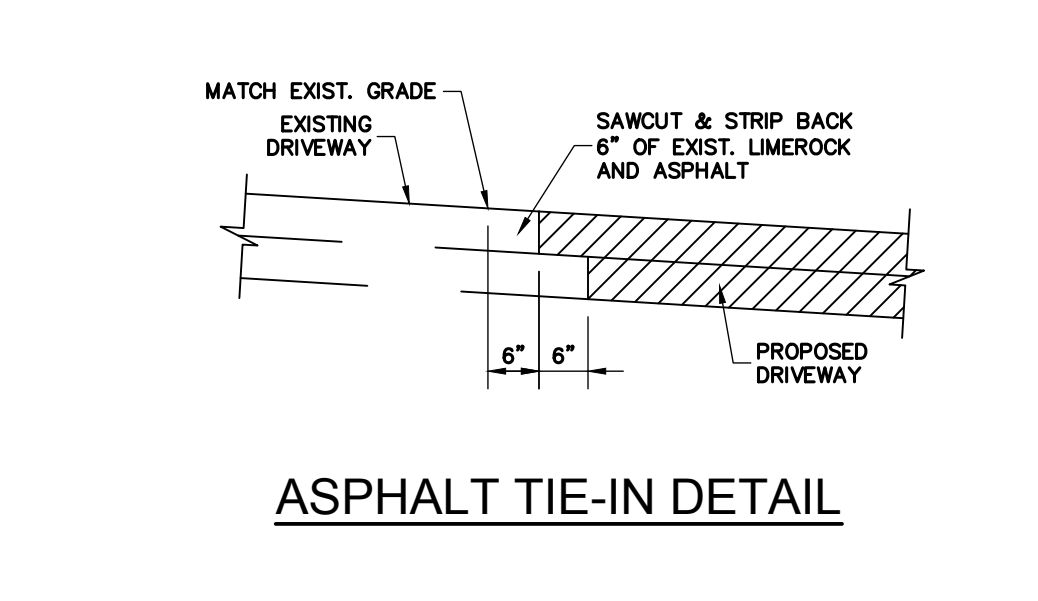
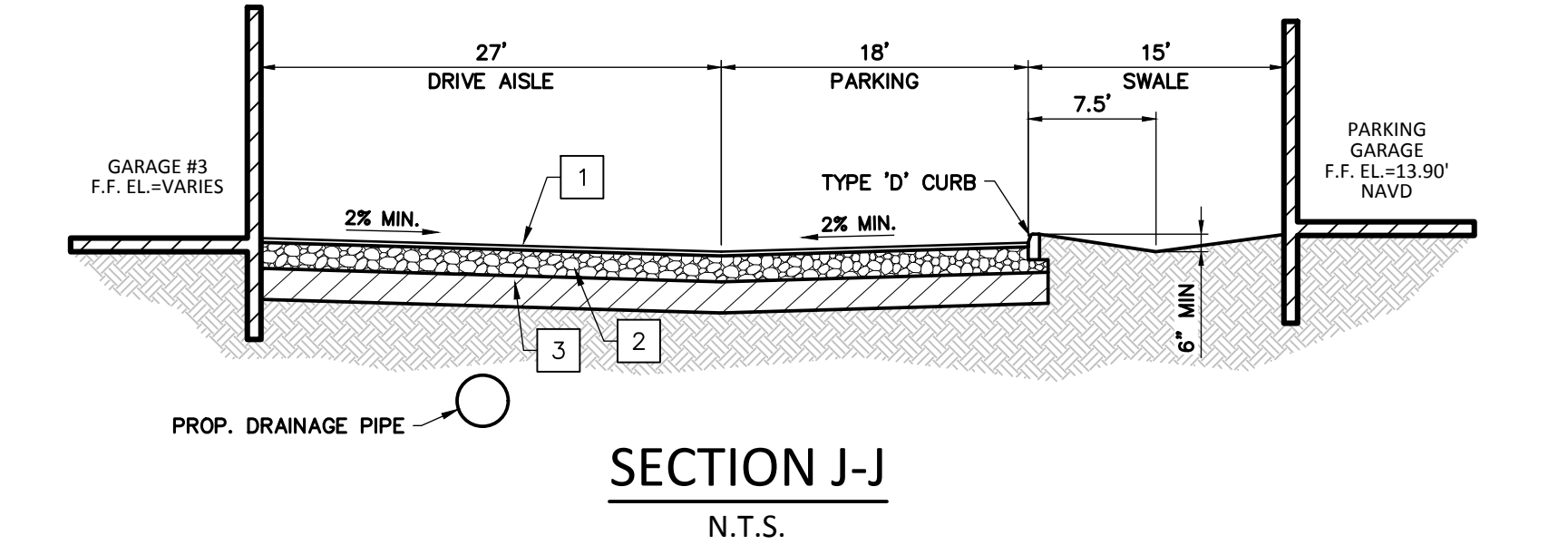
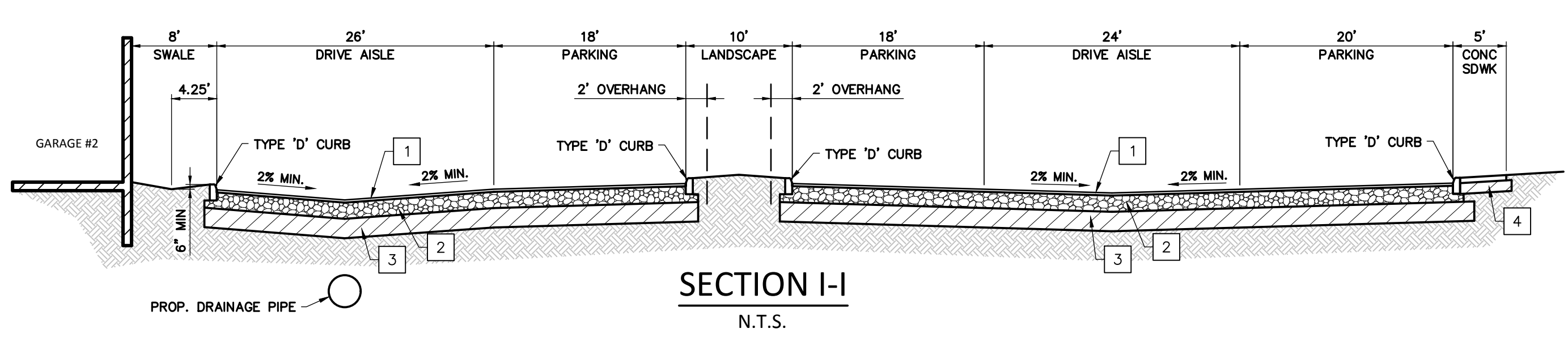
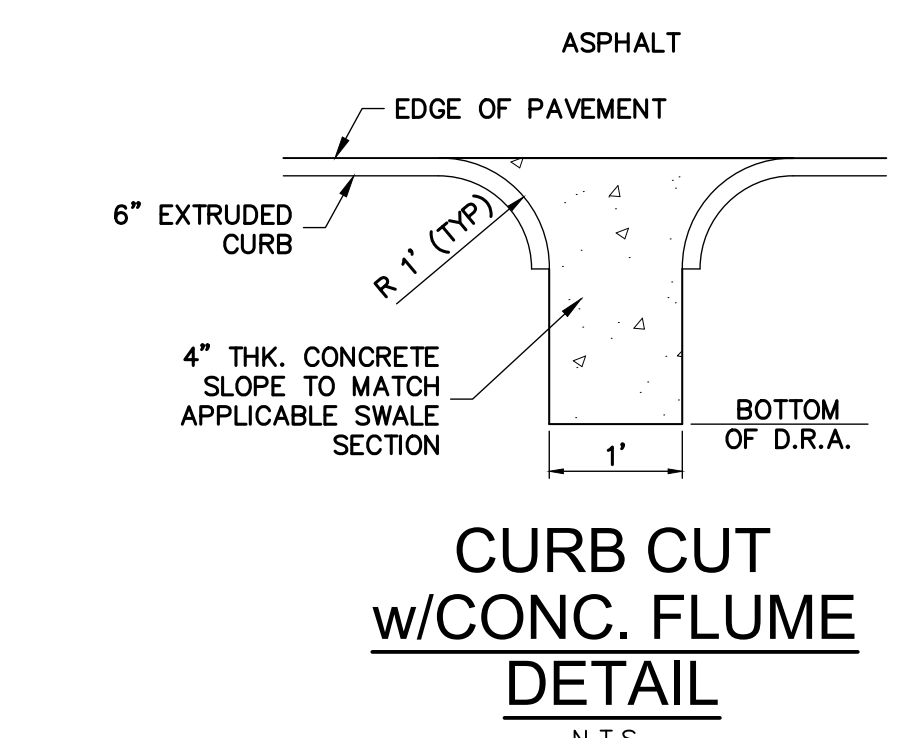
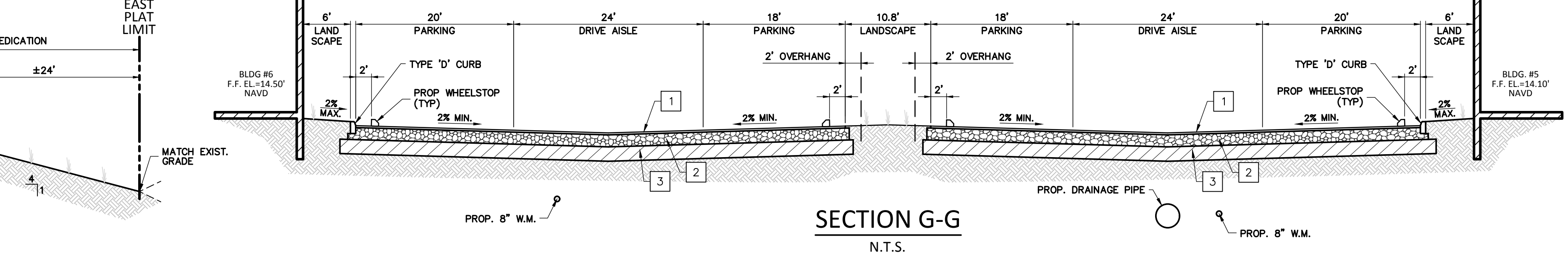
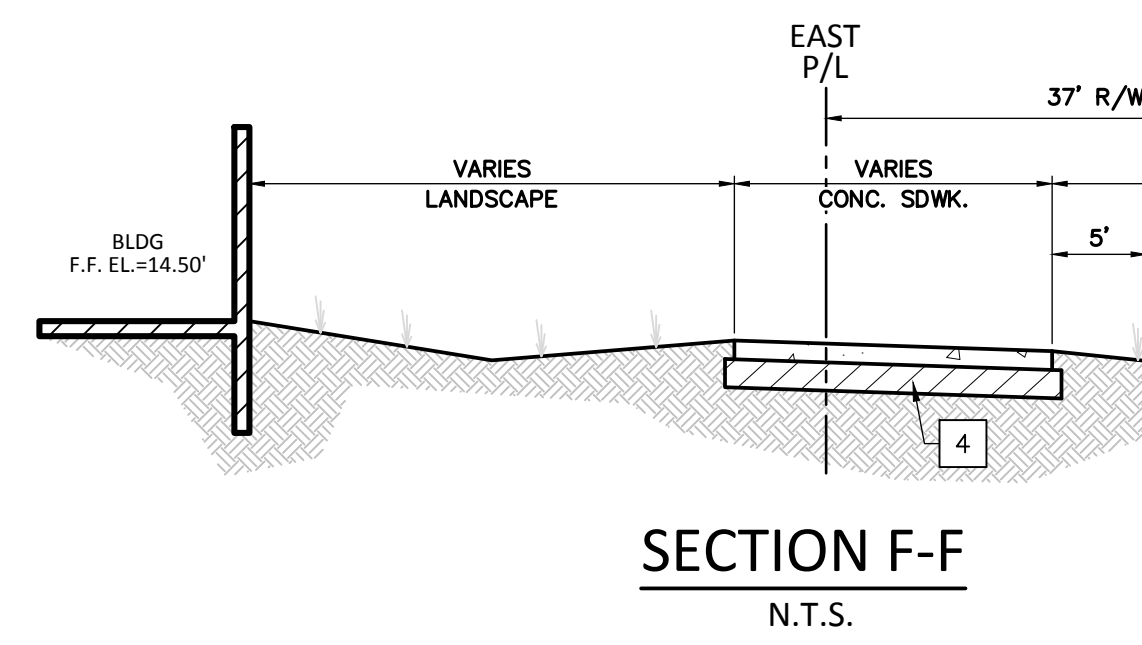
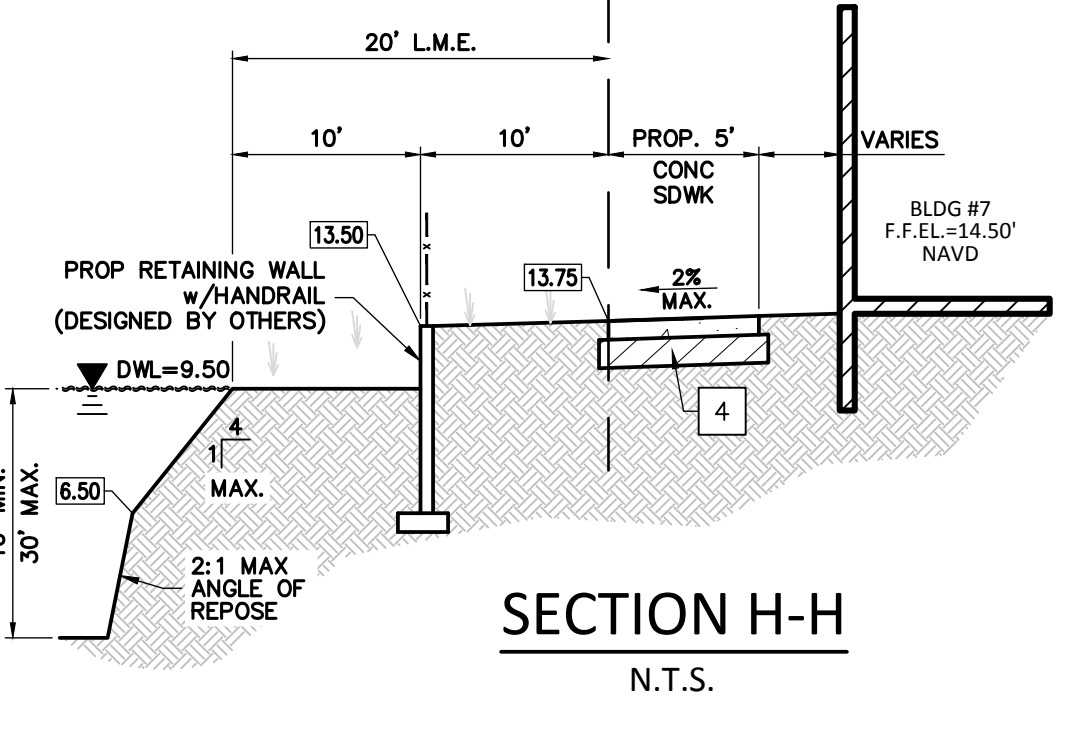
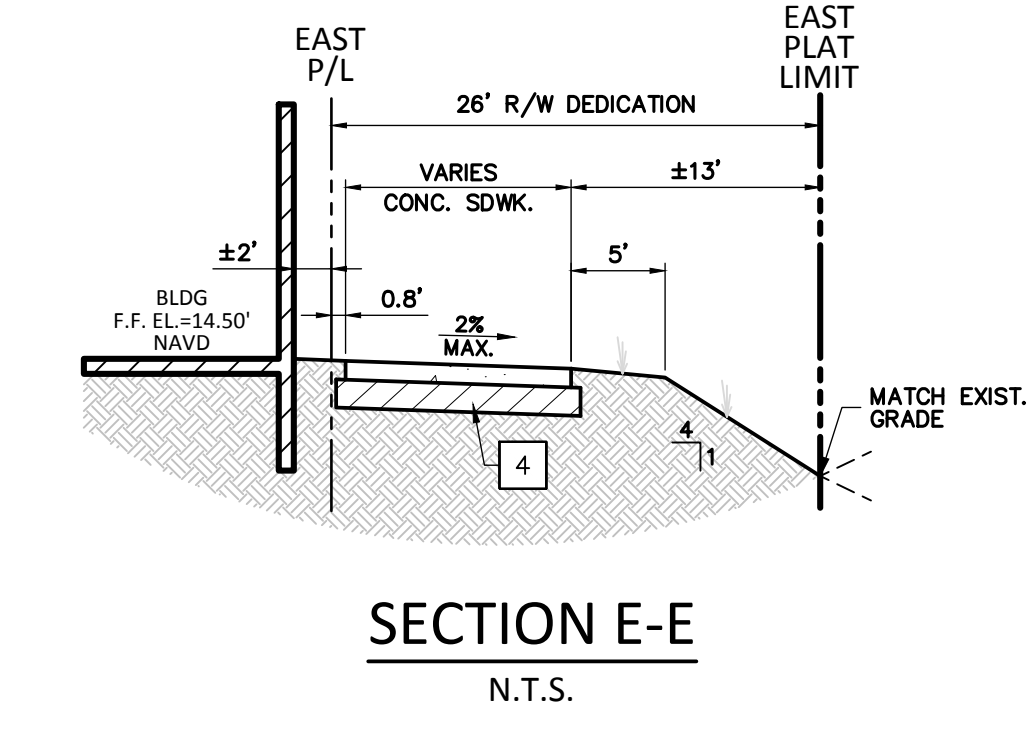
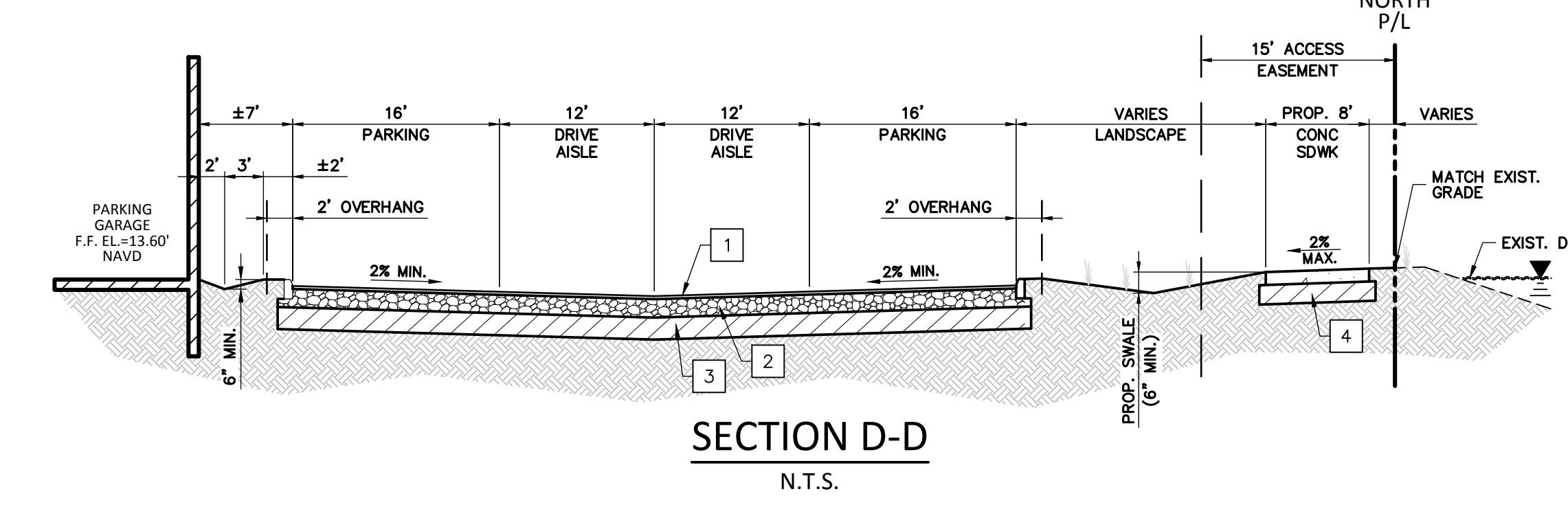
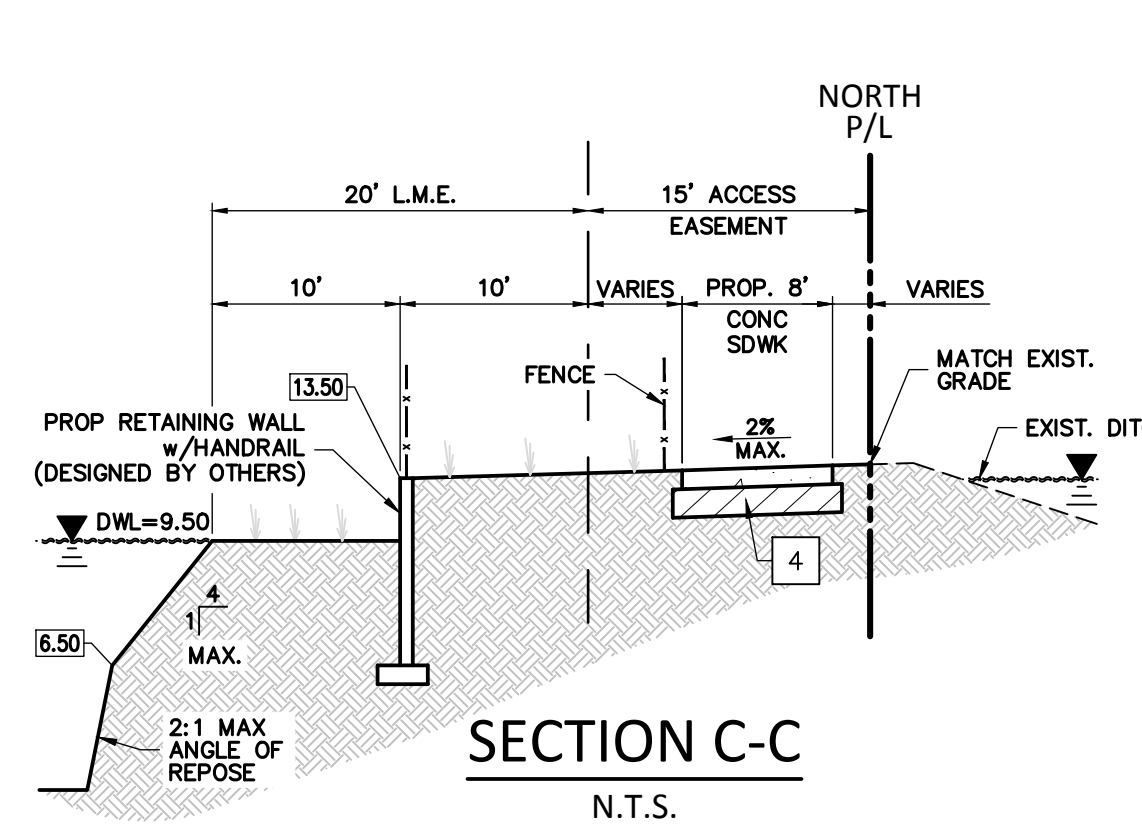


- ON-SITE PAVEMENT NOTES:**
1. THE WEARING SURFACE SHALL BE 1 1/2" THICK (MIN) IN TWO 3/4" LIFTS WITH THE LAST LIFT BEING PLACED AFTER ALL CONSTRUCTION IS COMPLETE. TYPE S-III ASPHALTIC CONCRETE, OVER PRIME COAT.
 2. THE BASE COURSE SHALL BE LIMEROCK (70% CALCIUM), 8" THICK COMPACTED IN ACCORDANCE WITH AASHTO SPECIFICATION T-180 TO 98% MAXIMUM DENSITY.
 3. ALL ORGANIC AND YIELDING MATERIAL WITHIN THE LIMITS SHOWN SHALL BE REMOVED AND REPLACED WITH CLEAN FILL. THE SUBBASE SHALL EXTEND 12" BELOW THE BASE COURSE, SHALL HAVE A MINIMUM DRY DENSITY OF 115 PCF AND SHALL BE COMPACTED TO 100% OF MAXIMUM DRY DENSITY PER AASHTO SPECIFICATION T-99 METHOD "C" MINIMUM L.B.R. TO BE 40.
 4. 12" COMPACTED SUBGRADE TO 98% PER AASHTO SPECIFICATION T-180 MIN. LBR 40.
 5. 2 3/8" PAVER BLOCK (SEE ARCHITECT'S PLANS FOR ADDITIONAL INFORMATION)
 6. 1" SAND BEDDING



FILE: K:\PROJECTS\15-xxx\15-3715\dwg\3715dtd.dwg
 PLOT DATE: 1/20/2016 4:18 PM BY: Andy Venneman
 LAYOUT: [C-2.3]

NO.	DATE	DESCRIPTION

DATE:	Jul. 2015
SCALE:	N.T.S.
DESIGNED BY:	C.R.L.
DRAWN BY:	A.E.V.
JOB NUMBER	15-3715
SHEET No.	C-2.3
SEAL	
Jan 20 2016	
CLIFFORD R. LOUTAN, P.E. FL. REG. NO. 56890	