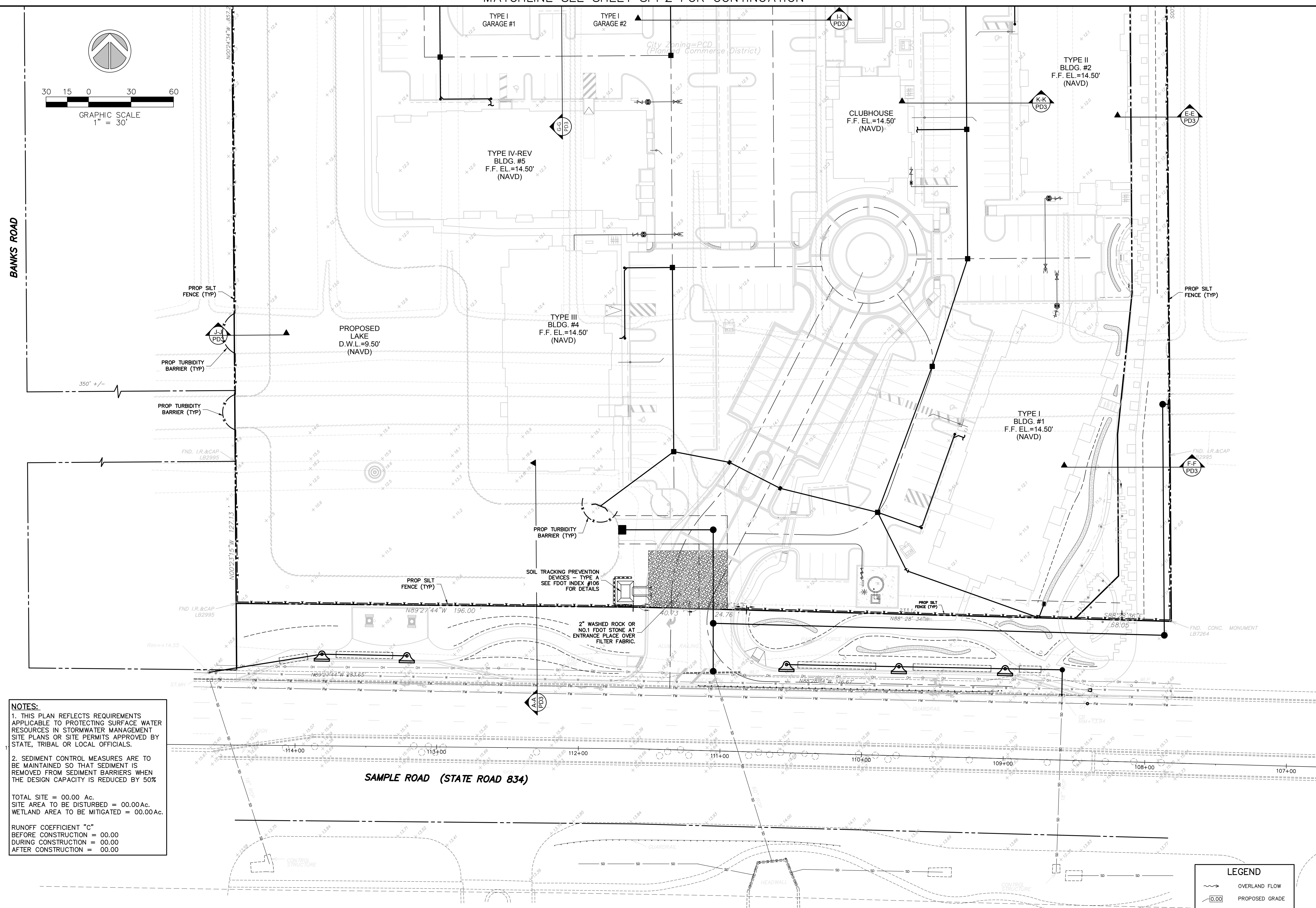
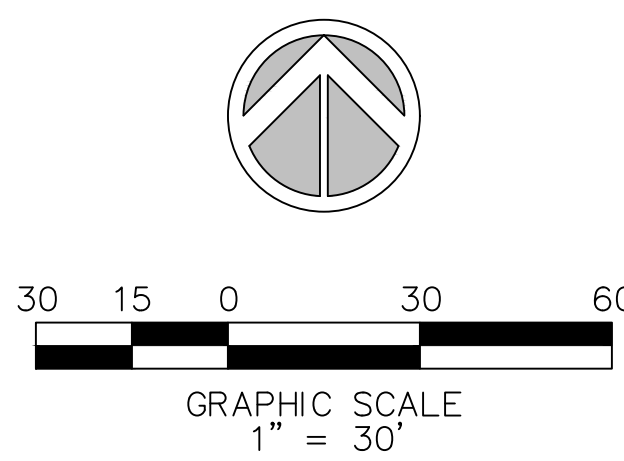


MATCHLINE SEE SHEET SPP2 FOR CONTINUATION



NOTES:
 1. THIS PLAN REFLECTS REQUIREMENTS APPLICABLE TO PROTECTING SURFACE WATER RESOURCES IN STORMWATER MANAGEMENT SITE PLANS OR SITE PERMITS APPROVED BY STATE, TRIBAL OR LOCAL OFFICIALS.
 2. SEDIMENT CONTROL MEASURES ARE TO BE MAINTAINED SO THAT SEDIMENT IS REMOVED FROM SEDIMENT BARRIERS WHEN THE DESIGN CAPACITY IS REDUCED BY 50%
 TOTAL SITE = 00.00 Ac.
 SITE AREA TO BE DISTURBED = 00.00 Ac.
 WETLAND AREA TO BE MITIGATED = 00.00 Ac.
 RUNOFF COEFFICIENT "C"
 BEFORE CONSTRUCTION = 00.00
 DURING CONSTRUCTION = 00.00
 AFTER CONSTRUCTION = 00.00

LEGEND

	OVERLAND FLOW
	PROPOSED GRADE

FILE: K:\PROJECTS\15-xxx\15-3715\dwg\3715spp.dwg
 PLOT DATE: 1/20/2016 4:21 PM BY: Andy Venneman
 LAYOUT: [C-5.1]

Sun-Tech Engineering, Inc.
 Engineers - Planners - Surveyors
 1600 West Oakland Park Boulevard
 Ft. Lauderdale, FL 33311
 www.suntecheng.com
 Certificate of Auth. # 7097
 Phone (954)777-3123
 Fax (954)777-3114

REVISIONS

NO.	DATE	DESCRIPTION

MIDTOWN RESIDENCES @ COCONUT CREEK
 FLORIDA
STORMWATER POLLUTION PREVENTION PLAN

DATE:
 Jul. 2015

SCALE:
 1" = 30'

DESIGNED BY:
 C.R.L.

DRAWN BY:
 A.E.V.

JOB NUMBER
 15-3715

SHEET No.
 C-5.1

SEAL
 Jan 20 2016
 CLIFFORD R. LOUTAN, P.E.
 FL. REG. NO. 56890