

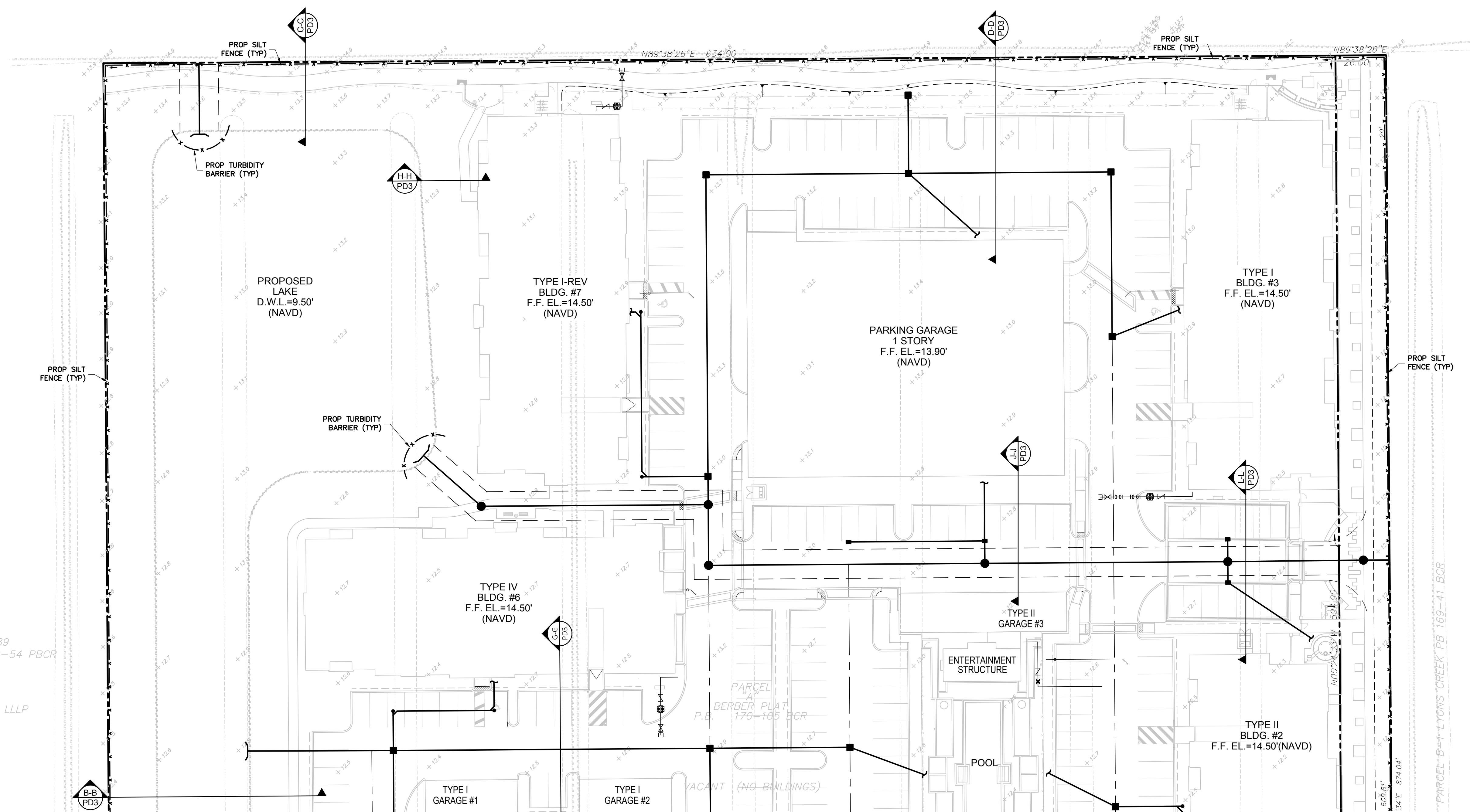
TRACTS 40,58-60 BLOCK 89  
PALM BEACH FARMS PB 2-54 PBCR

**NOTES:**

1. THIS PLAN REFLECTS REQUIREMENTS APPLICABLE TO PROTECTING SURFACE WATER RESOURCES IN STORMWATER MANAGEMENT SITE PLANS OR SITE PERMITS APPROVED BY STATE, TRIBAL OR LOCAL OFFICIALS.
2. SEDIMENT CONTROL MEASURES ARE TO BE MAINTAINED SO THAT SEDIMENT IS REMOVED FROM SEDIMENT BARRIERS WHEN THE DESIGN CAPACITY IS REDUCED BY 50%

TOTAL SITE = 00.00 Ac.  
SITE AREA TO BE DISTURBED = 00.00Ac.  
WETLAND AREA TO BE MITIGATED = 00.00Ac.

RUNOFF COEFFICIENT "C"  
BEFORE CONSTRUCTION = 00.00  
DURING CONSTRUCTION = 00.00  
AFTER CONSTRUCTION = 00.00



MATCHLINE SEE SHEET SPP1 FOR CONTINUATION

**LEGEND**

	OVERLAND FLOW
	PROPOSED GRADE

FILE: K:\PROJECTS\15-xxx\15-3715\dwg\3715spp.dwg  
PLOT DATE: 1/20/2016 4:21 PM BY: Andy Venneman  
LAYOUT: [C-5.2]

**Sun-Tech Engineering, Inc.**  
Engineers - Planners - Surveyors  
1600 West Oakland Park Boulevard  
FL, Lauderdale, FL 33311  
www.suntecheng.com

Certificate of Auth. # 7097  
Phone (954)777-3123  
Fax (954)777-3114

**REVISIONS**

NO.	DATE	DESCRIPTION

**MIDTOWN RESIDENCES  
@ COCONUT CREEK**  
FLORIDA  
**STORMWATER POLLUTION  
PREVENTION PLAN**

DATE:  
Jul. 2015

SCALE:  
1" = 30'

DESIGNED BY:  
C.R.L.

DRAWN BY:  
A.E.V.

JOB NUMBER  
15-3715

SHEET No.  
C-5.2

SEAL  
Jan 20 2016  
CLIFFORD R. LOUTAN, P.E.  
FL. REG. NO. 56890

K:\PROJECTS\15-xxx\15-3715\dwg\3715spp.dwg, C:\2, 1/20/2016 4:21:38 PM, 1, Sun-Tech Engineering, Inc. (A/E/C), Sun-Tech Engineering, Inc. (A/E/C)