

MAINTENANCE OF TRAFFIC SCHOOL/PEDESTRIAN

THE MAINTENANCE OF TRAFFIC PLAN, PROVIDED BY THE CONTRACTOR, SHALL INCLUDE PROVISIONS FOR PEDESTRIAN AND/OR SCHOOL STUDENT TRAFFIC AS WELL AS VEHICULAR TRAFFIC. THE FOLLOWING ARE MINIMUM REQUIREMENTS.

THE SAFE WALK ROUTE FOR ALL SCHOOL STUDENTS WITHIN THE VICINITY OF THE CONSTRUCTION ZONE SHALL BE MAINTAINED DURING THE TIMES STUDENTS ARE ARRIVING AT OR LEAVING SCHOOL. IF THE CURRENT WALKING SURFACE CANNOT BE MAINTAINED, THEN A TEMPORARY ROAD-ROCK 4' WALK WAY SHALL BE CREATED. THE SAFE WALK ROUTE SHALL BE SEPARATED FROM THE CONSTRUCTION ACTIVITY BY THE 4' HIGH ORANGE CONSTRUCTION FENCE FOR THE ENTIRE LENGTH OF THE PROJECT OR THE LENGTH OF THE WALK ROUTE, WHICHEVER IS LESS.

ALL CONSTRUCTION EQUIPMENT AROUND ANY DESIGNATED CROSSWALK SHALL CEASE TO OPERATE DURING THE TIMES STUDENTS ARE ARRIVING AT OR LEAVING SCHOOL. ALL CONSTRUCTION EQUIPMENT ADJACENT TO A DESIGNATED WALK ROUTE SHALL CEASE OPERATING UNLESS SATISFACTORILY BARRICADED FROM THE WALK ROUTE.

IN THE CASE THAT A DESIGNATED CROSSING OR ANY PORTION OF THE DESIGNATED WALK ROUTE CANNOT BE MAINTAINED, THEN THE CONTRACTOR SHALL NOTIFY THE SPECIAL PROJECTS COORDINATOR AT BROWARD COUNTY TRAFFIC ENGINEERING DIVISION, (954) 847-2671, A MINIMUM OF TEN (10) WORKING DAYS PRIOR TO CLOSING THAT ROUTE IN ORDER THAT AN ALTERNATE CROSSING/ROUTE CAN BE ESTABLISHED.

IT SHALL BE THE RESPONSIBILITY OF THE CONTRACTOR TO INSTALL ANY NECESSARY PAVEMENT, ROAD ROCK, PAVEMENT MARKING AND SIGNAGE AND/OR ANY PEDESTRIAN SIGNALIZATION AND/OR SIGNAL MODIFICATION TO ACCOMMODATE AN EXISTING OR ALTERNATE WALK ROUTE.

IT SHALL BE THE CONTRACTOR'S RESPONSIBILITY TO PROVIDE STATE CERTIFIED SCHOOL CROSSING GUARDS OR OFF DUTY POLICE OFFICERS TO CROSS STUDENTS AT ANY LOCATIONS OTHER THAN THOSE PREVIOUSLY DESIGNATED. THE CONTRACTOR MAY USE FLAGMEN, ONLY IF THEY ARE STATE CERTIFIED AS A SCHOOL CROSSING GUARD.

THIRTY (30) DAYS PRIOR TO THE BEGINNING OF CONSTRUCTION THE CONTRACTOR SHALL NOTIFY THE SPECIAL PROJECTS COORDINATOR AT BROWARD COUNTY TRAFFIC ENGINEERING DIVISION, (954) 847-2671, TO ARRANGE A PRE-CONSTRUCTION - SCHOOL SAFETY MEETING.

IT SHALL BE THE CONTRACTOR'S RESPONSIBILITY TO NOTIFY THE BROWARD COUNTY SCHOOL BOARD PUPIL TRANSPORTATION DEPARTMENT TO ARRANGE A PRE-CONSTRUCTION SCHOOL BUS ROUTE MEETING AT THE FOLLOWING:

- RUTH MASTERS ROUTING (754) 321-4400 EXT. #2309 ruth.masters@broward.schools.com
- VINCENT HARRELL STUDENT TRANSPORTATION & FLEET SERVICE (754) 321-4472 vincent.harrell@browardschools.com
- MARY TOCHTERMANN STUDENT TRANSPORTATION & FLEET SERVICE (754) 321-4400 EXT. #2006 mary.tochtermann@browardschools.com

THIS MEETING IS TO DETERMINE ALL BUS ROUTES AND TO MAKE ANY NECESSARY ARRANGEMENTS FOR REROUTING. THIS MEETING SHALL INCLUDE THE SPECIAL PROJECTS COORDINATOR FROM BROWARD COUNTY TRAFFIC ENGINEERING DIVISION, (954) 847-2671.

THE CONTRACTOR SHALL IS RESPONSIBLE FOR PROVIDING A SAFE AND ADEQUATE WALKING SURFACE FOR ALL SCHOOL CHILDREN/PEDESTRIANS. THE SAFE WALK ROUTE SHALL BE PART OF THE MAINTENANCE OF TRAFFIC PLAN.

THE CONTRACTOR SHALL IS RESPONSIBLE FOR OBTAINING AN APPROVED MAINTENANCE OF TRAFFIC PLAN (MOT), INCLUDING THE ABOVE SCHOOL/PEDESTRIAN CONDITIONS, THROUGH BROWARD COUNTY TRAFFIC ENGINEERING DIVISION. THE CONDITIONS OUTLINED IN THE MOT ARE IN FORCED AND FULLY EFFECTIVE AS PART OF THE PROPOSED IMPROVEMENTS. THE CONTRACTOR SHALL IS RESPONSIBLE FOR ENSURING THAT ALL WORK ASSOCIATED WITH THIS PROJECT IS IN COMPLIANCE WITH ALL THE REQUIREMENTS OF THE APPROVED MOT, INCLUDING THE ABOVE SCHOOL/PEDESTRIAN CONDITIONS.

THE CONTRACTOR SHALL ENSURE THAT THERE ARE NO SPEED LIMIT SIGNS INSTALLED WITHIN THE DESIGNATED REDUCED SCHOOL ZONE, AT ANY TIME THROUGHOUT THE PROJECT.

"COMMUNICATIONS NOTES" REVISED: 10/13/2015

THE AGENCY RESPONSIBLE FOR MAINTENANCE OF THE TRAFFIC SIGNALS AND RELATED EQUIPMENT IS BROWARD COUNTY TRAFFIC ENGINEERING DIVISION (BCTED). ALL SYSTEM COMMUNICATIONS EQUIPMENT, CABLES AND RELATED MATERIAL SHALL COMPLY WITH BROWARD COUNTY'S LATEST EDITION OF THE MINIMUM STANDARDS AS EXPRESSED IN THE "STANDARDS AND SPECIFICATIONS COMMUNICATION INFRASTRUCTURE" DOCUMENT. PLEASE REFER TO (BCTED'S) COMMUNICATIONS POLICIES AND PROCEDURES FOR ADDITIONAL INFORMATION. BROWARD COUNTY TRAFFIC ENGINEERING DIVISION WILL NOT ACCEPT ANY PROJECTS THAT DO NOT MEET THESE STANDARDS AND SPECIFICATIONS. IF FIBER OPTIC PULL BOXES ALREADY EXIST AT AN INTERSECTION, NO ADDITIONAL FIBER OPTIC PULL BOXES WILL NEED TO BE INSTALLED. FOR A COPY OF THESE STANDARDS REFER TO THE BROWARD COUNTY WEB SITE AT WWW.BROWARD.ORG/TRAFFIC UNDER PUBLICATIONS.

IF THERE ARE COPPER INTERCONNECT CABLE/S WITHIN YOUR PROJECT LIMITS OR WITHIN 1500 FEET OF YOUR PROJECT LIMITS, CONTACT THE COMMUNICATIONS MANAGER AT tecommunications@broward.org or 954-847-2745.

IF THERE ARE FIBER OPTIC CABLE/S WITHIN YOUR PROJECT LIMITS OR WITHIN 1500 FEET OF YOUR PROJECT LIMITS CONTACT THE COMMUNICATIONS MANAGER AT tecommunications@broward.org or 954-847-2745.

IF THERE ARE CELLULAR COMMUNICATIONS WITHIN YOUR PROJECT LIMITS, CONTACT THE COMMUNICATIONS MANAGER AT tecommunications@broward.org or 954-847-2745

ALL BCTED COMMUNICATIONS CABLES/CONDUIT SHALL BE LOCATED A MINIMUM OF 48 HOURS IN ADVANCE.

BROWARD COUNTY TRAFFIC ENGINEERING DIVISION
PROCEDURE FOR NOTIFICATION OF COMMUNICATION DISRUPTION

COPPER INTERCONNECT CABLE NOTIFICATION CONTACT PERSON
WHEN COMMUNICATIONS TO AN INTERSECTION MUST BE DISRUPTED BY A CONTRACTOR TO PERFORM WORK, THE CONTRACTOR SHALL PROVIDE TWO DAY ADVANCE NOTICE IN WRITING TO THE BROWARD COUNTY TRAFFIC ENGINEERING DIVISION. THIS NOTIFICATION SHALL BE CONVEYED VIA ELECTRONIC MAIL (EMAIL) TO THE TRAFFIC SIGNAL TECHNICIAN III AT tecommunications@broward.org. NOTIFICATION SHALL INCLUDE CONTACT PERSON, TELEPHONE NUMBER, PURPOSE, LOCATION AND DURATION. THE DISRUPTION SHALL LAST FOR NO MORE THAN 3 CONSECUTIVE BUSINESS DAYS. WHERE POSSIBLE, THE DISRUPTION SHALL BE DURING OFF PEAK HOURS BEGINNING AT 9:00AM AND ENDING AT 3:00PM.

FIBER OPTIC CABLE NOTIFICATION CONTACT PERSON
WHEN COMMUNICATIONS TO AN INTERSECTION MUST BE DISRUPTED BY A CONTRACTOR TO PERFORM WORK, THE CONTRACTOR SHALL PROVIDE TWO DAY ADVANCE NOTICE IN WRITING TO THE BROWARD COUNTY TRAFFIC ENGINEERING DIVISION. THIS NOTIFICATION SHALL BE CONVEYED VIA ELECTRONIC MAIL (EMAIL) TO THE COMMUNICATIONS MANAGER AT tecommunications@broward.org. NOTIFICATION SHALL INCLUDE CONTACT PERSON, TELEPHONE NUMBER, PURPOSE, LOCATION AND DURATION. THE DISRUPTION SHALL LAST FOR NO MORE THAN 3 CONSECUTIVE BUSINESS DAYS. WHERE POSSIBLE, THE DISRUPTION SHALL BE DURING OFF PEAK HOURS BEGINNING AT 9:00AM AND ENDING AT 3:00PM.

NOTES:

- ALL PAVEMENT MARKINGS ADJACENT TO AND IN THE PUBLIC RIGHT OF WAY SHALL BE REFLECTIVE THERMOPLASTIC.
- ALL STOP SIGNS SHALL BE 30"x30" HIGH INTENSITY REFLECTIVE MATERIAL.
- PAVEMENT MARKINGS ON PAVERS SHALL BE 5730/5731 TAPE 3M OR EQUAL APPLIED WITH CONTACT CEMENT OR THERMOPLASTIC APPLIED TO A CONCRETE RIBBON SEALED WITH FDOT APPROVED SEALER
- RAISED PAVEMENT MARKERS SHALL BE CLASS B-911 OR EQUAL.
- RAISED PAVEMENT MARKERS SHALL BE APPLIED WITH EPOXY OR BITUMINOUS
- FOR THE LOCATION OF BROWARD COUNTY TRAFFIC ENGINEERING DIVISION FACILITIES CONTACT JEROME PONDER 954-484-0600 (ext. 264) 7-10 DAYS PRIOR TO CONSTRUCTION
- ALL MATERIALS AND CONSTRUCTION WITHIN THE D.O.T R/W SHALL CONFORM TO THE ROADWAY AND TRAFFIC DESIGN STANDARDS (LATEST EDITION) AND THE SUPPLEMENTS THERE TO.
- THE CONTRACTOR MUST CALL B.C.T.E.D. AT 954-484-9600 AT LEAST 48 HOURS BEFORE ANY EXCAVATION WITHIN THE D.O.T. R/W TO DETERMINE THE LOCATION OF THE EXISTING TRAFFIC SIGNAL INTERCONNECT CABLE.
- AT THE END OF EACH WORK PERIOD, ANY DROP-OFF IN THE AREA ADJACENT TO THE TRAVEL WAY OF THE STATE ROAD SHALL BE BACKFILLED IN ACCORDANCE WITH STANDARD INDEX 600 OR SHALL BE OTHERWISE PROTECTED WITH TEMPORARY BARRIER WALL AT THE CONTRACTOR'S EXPENSE.
- THE CONSULTANT'S ENGINEER RESPONSIBLE FOR CONSTRUCTION INSPECTION SHALL INSURE THAT THE M.O.T. FOR THE PROJECT CONFORMS WITH STANDARD INDEX SERIES 600, APPLICABLE INDEX FOR WORK BEING PERFORMED.

- ALL M.O.T. LANE CLOSURE SIGNS SHALL BE COVERED WHEN LANES ARE NOT CLOSED. NO LANES CLOSURES ARE ALLOWED BETWEEN 7:00 AM AND 9:00 AM OR BETWEEN 4:00 PM AND 6:00 PM.
- IF THE PERMITTED WORK IS ON A ROADWAY THAT HAS BEEN SELECTED AS A HURRICANE OR DISASTER EVACUATION ROUTE, THE APPLICANT, AT THE PRE-CONSTRUCTION CONFERENCE IS REQUIRED TO PRESENT, AS PART OF THE WORK PLAN, AN EMERGENCY FUNCTIONAL RESTORATION PLAN TO ADDRESS EVENTUALITIES SUCH AS HURRICANES.

THE CONTRACTOR MUST CALL THE APPROPRIATE COUNTY TRAFFIC ENGINEERING DIVISION, HAVING JURISDICTION OVER THE PROJECT AT LEAST 48 HOURS, BEFORE ANY EXCAVATION WITHIN THE FDOT RIGHT-OF-WAY TO DETERMINE THE LOCATION OF THE EXISTING TRAFFIC SIGNAL INTERCONNECT CABLE.

13. THE LOCATION OF EXISTING UTILITIES SHOWN IS APPROXIMATE ONLY. THE CONTRACTOR SHALL DETERMINE THE EXACT LOCATION DURING CONSTRUCTION. RELOCATION OF UTILITIES SHALL BE COORDINATED WITH UTILITY COMPANIES AFTER IDENTIFICATION OF CONFLICT BY CONTRACTOR. CONTRACTOR WILL NOTIFY ENGINEER IN ADVANCE BEFORE ANY RELOCATION.

14. BEFORE PERMIT APPROVAL AND CONSTRUCTION OF THIS PROJECT, THE APPLICANT MUST CONTACT THE FLORIDA DEPARTMENT OF TRANSPORTATION LOCAL MAINTENANCE OFFICE DISTRICT 6 TO SCHEDULE A PRE-CONSTRUCTION MEETING.

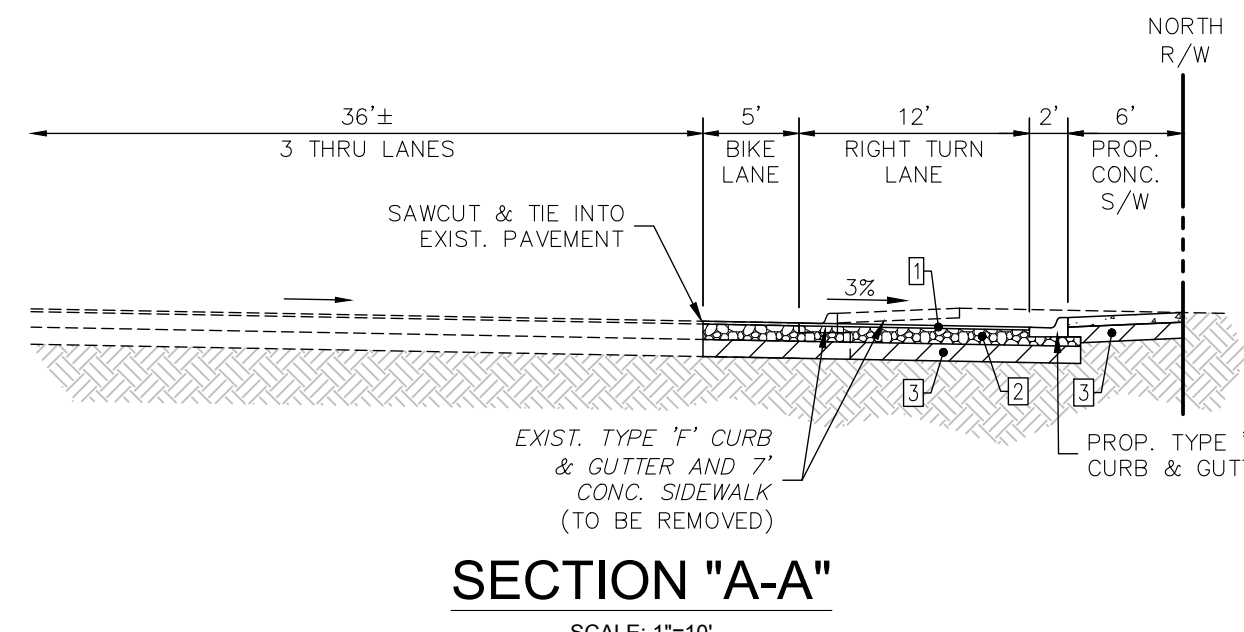
15. THE APPLICANT AT THE EARLIEST CONVENIENT TIME SHALL NOTIFY IN WRITING ALL RIGHT-OF-WAY USERS AFFECTED BY THE CONSTRUCTION OF THIS PROJECT. ALL MOT LANE CLOSURE SIGNS SHALL BE COVERED WHEN LANES ARE NOT CLOSED. NO LANES ARE TO BE CLOSED EXCEPT AT TIMES PRESCRIBED BY THE DEPARTMENT.

16. FLAGGERS MUST BE PRESENT DURING THE INGRESS AND EGRESS OF CONSTRUCTION VEHICLES TO AND FROM THE PROJECT SITE. WARNING SIGNS MUST BE ERECTED ADVISING MOTORIST OF TRUCKS ENTERING THE HIGHWAY.

17. THESE PLANS HAVE BEEN DESIGNED IN ACCORDANCE WITH THE "MANUAL OF UNIFORM MINIMUM STANDARDS" FOR DESIGN CONSTRUCTION AND MAINTENANCE, FOR STREETS AND HIGHWAYS - STATE OF FLORIDA.

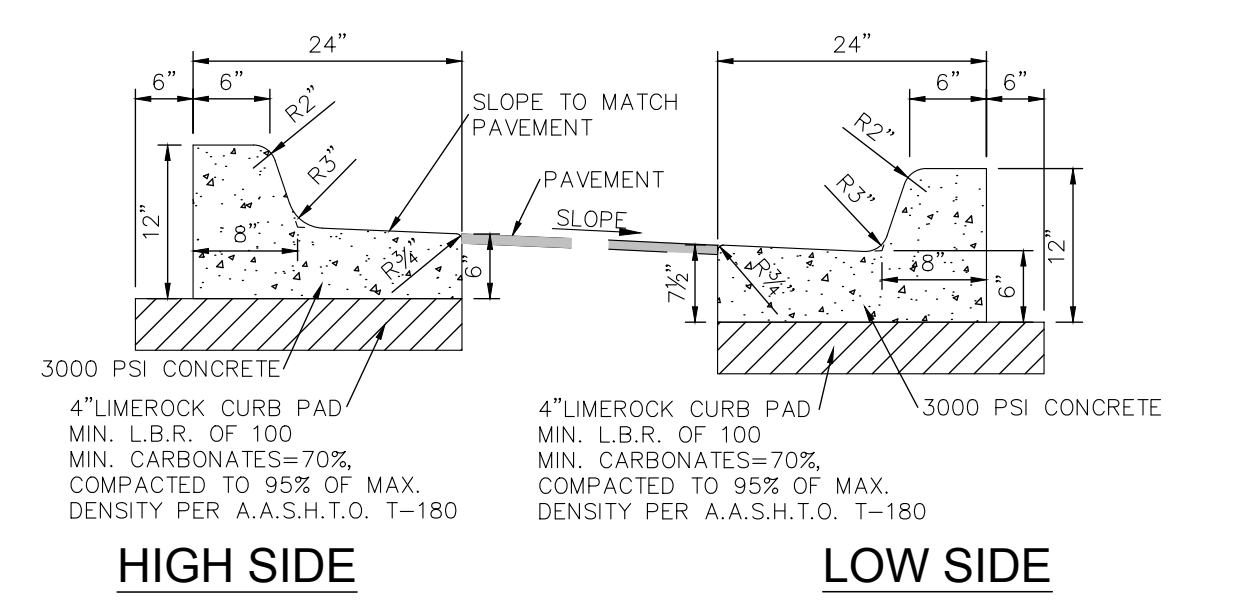
NOTES:

- CONTRACTOR TO SOFT DIG EXISTING UTILITIES AT LOCATIONS WHERE TURN LANE WILL BE CONSTRUCTED. DEPTHS, PIPE SIZES, MATERIALS MUST BE FIELD LOCATED AND PROVIDED TO ENGINEER PRIOR TO SUBMITTAL OF SHOP DRAWINGS FOR STRUCTURES.

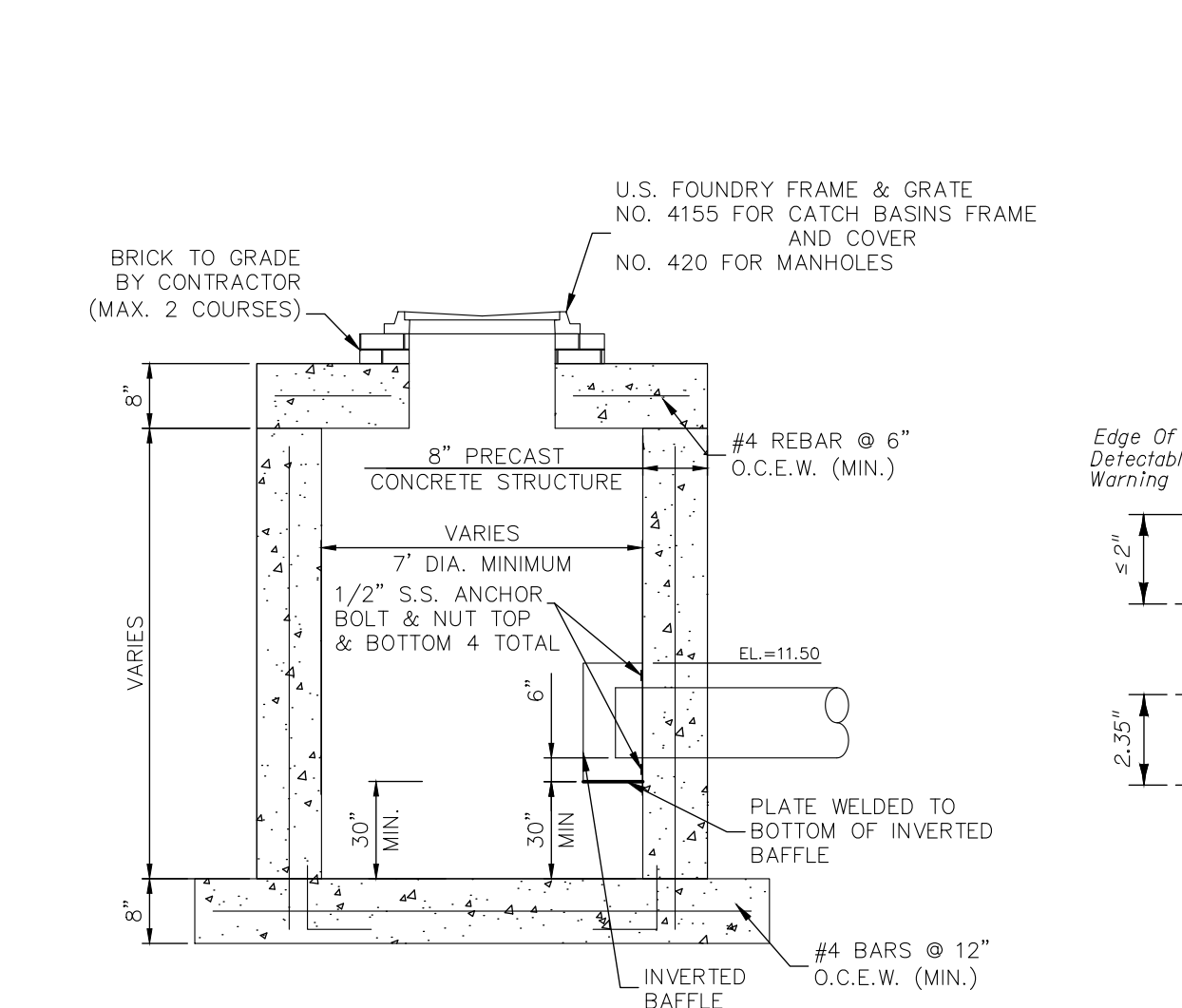


PAVEMENT NOTES

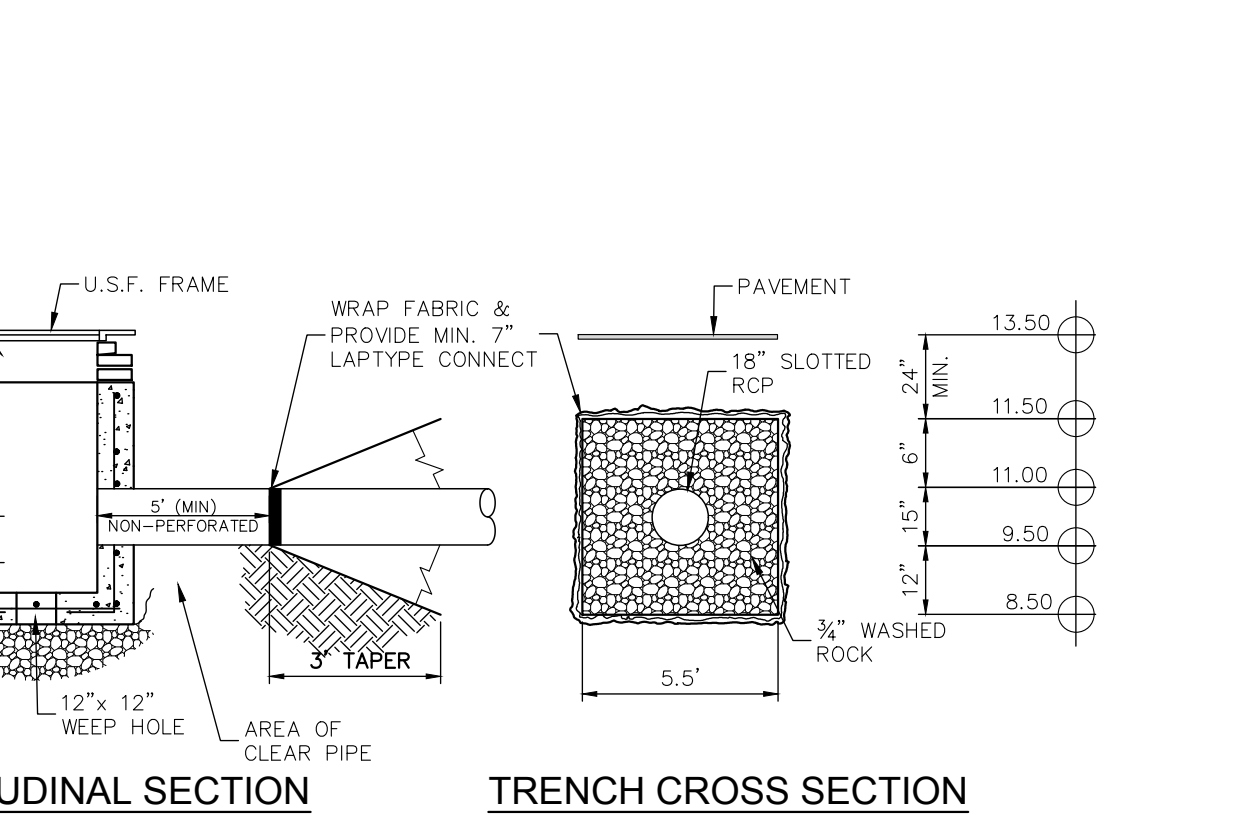
- MATCH EXIST. TYPE & DEPTH OF ASPHALT TO 3/8" MAXIMUM, INCLUDING FRICTION COURSE. THE STRUCTURAL COURSE SHALL BE 2" TYPE SP (TRAFFIC B) AND THE FRICTION COURSE SHALL BE 1" TYPE FC-9.5 (RUBBER).
- THE BASE COURSE SHALL BE LIMEROCK (70% CALCIUM), 12" THICK COMPACTED IN 6" LIFTS IN ACCORDANCE WITH AASHTO SPECIFICATION T-180 TO 98% DENSITY, MIN. LBR 100. CONSTRUCTION TO CONFORM TO SECTION 200. BASE TO BE PRIMED AFTER COMPACTION.
- THE STABILIZED SUBGRADE SHALL BE MINIMUM 12" THICK AND COMPACTED TO 98% MAX. DENSITY ACCORDING TO AASHTO T-180. MATERIAL TO HAVE MINIMUM LBR OF 40 AND CONFORM TO SECTION 160. REMOVE ALL MUCK, OVERBURDEN AND ROOT MATERIAL TO THE RIGHT-OF-WAY LINE, AND BACKFILL TO THE REQUIRED SUBGRADE WITH CLEAN, GRANULAR MATERIAL IN MAX. 6" LIFTS COMPACTED TO 100% OF MAXIMUM DRY DENSITY IN ACCORDANCE WITH AASHTO T-99-C SPECIFICATIONS AND EACH LIFT TESTED BEFORE PLACING NEXT LIFT.



TYPE 'F' CURB & GUTTER DETAIL



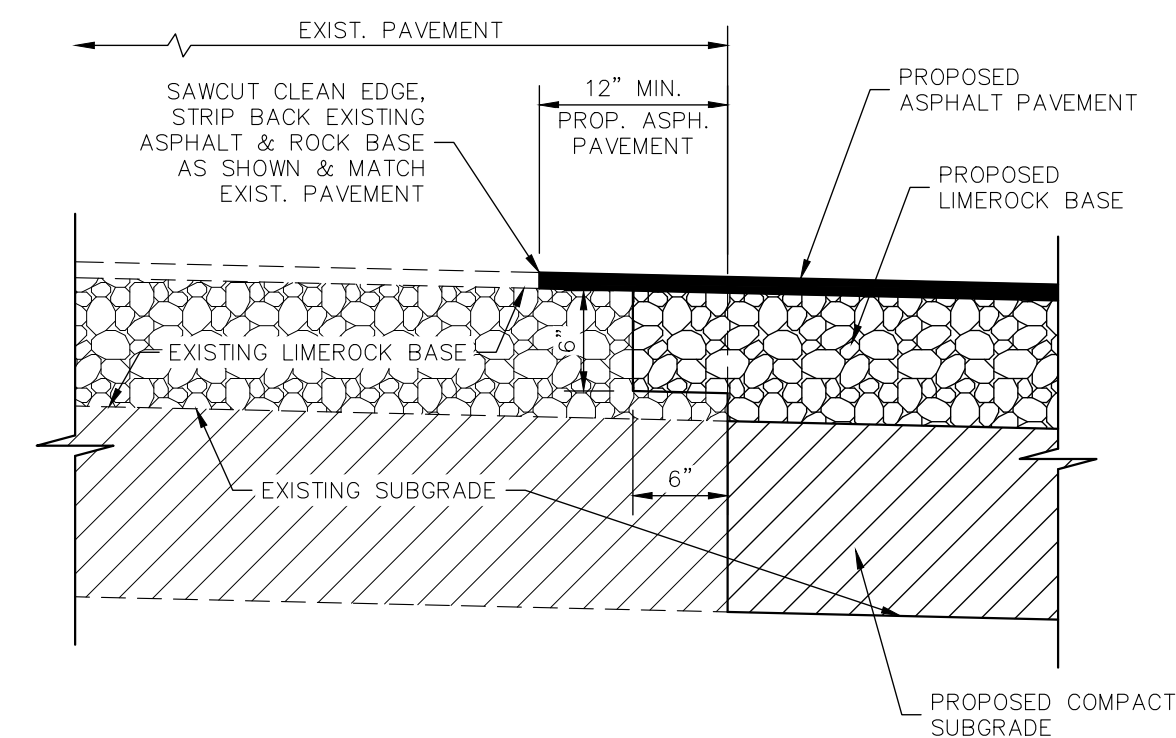
STRUCTURE #D (INVERTED BAFFLE)



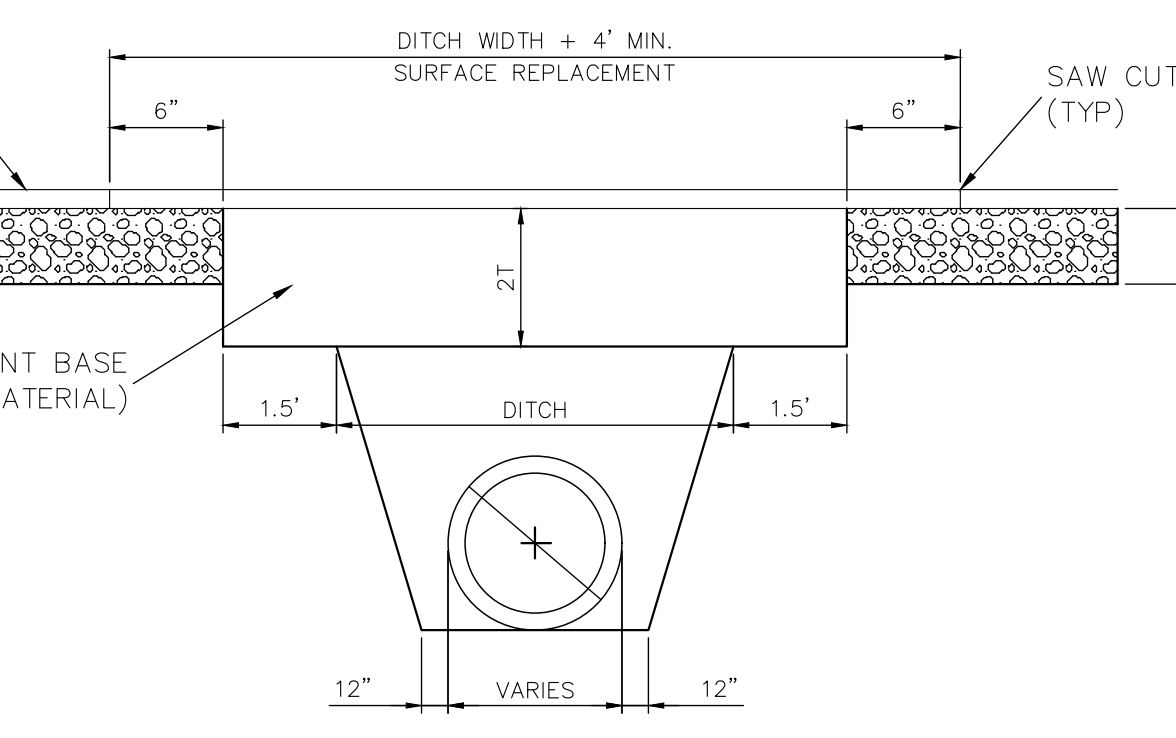
EXFILTRATION TRENCH DETAIL

NOTE: COMPACT TRENCH BACKFILL AND SOIL WITHIN MIN. 5' OFF TRENCH TO MIN. 95% OF MAX. DRY DENSITY PER ASTM D-1557.

B.C.H.C.E.D. REF. No.:



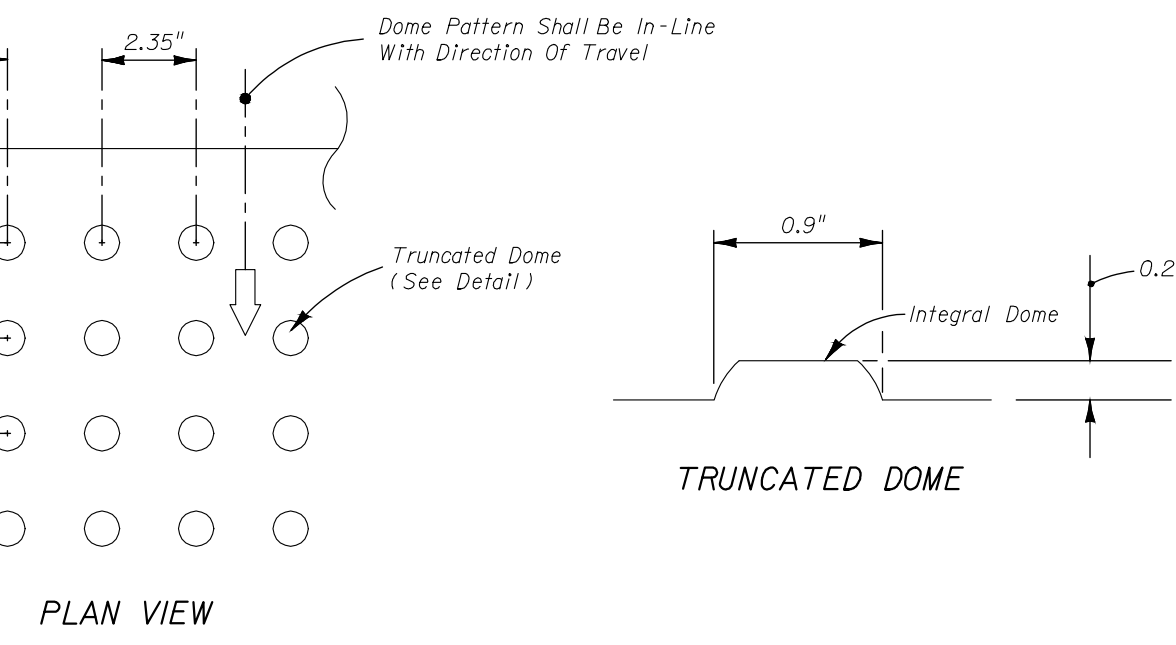
PAVEMENT CONNECTION DETAIL



GENERAL NOTES:

- REPLACED BASE MATERIAL OVER DITCH SHALL BE TWICE THE THICKNESS OF THE ORIGINAL BASE, MINIMUM 8", MAXIMUM 18".
- BASE MATERIAL SHALL BE PLACED IN 6" MAXIMUM (LOOSE MEASUREMENT) LAYERS AND EACH LAYER THOROUGHLY ROLLED OR TAMPED TO 98% OF MAXIMUM DENSITY, PER AASHTO T-180.
- ASPHALT CONCRETE PAVEMENT JOINTS SHALL BE MECHANICALLY SAWED.
- SURFACE MATERIAL SHALL BE CONSISTENT WITH THE SURROUNDING SURFACE MATERIAL.
- BASE MATERIAL SHALL HAVE A MINIMUM LBR OF 100 AND A MINIMUM CARBONATE CONTENT OF 70% (60% FOR LOCAL STREETS).
- IF THE DITCH IS FILLED TEMPORARILY, IT SHALL COVERED WITH A 2" THICK ASPHALTIC CONCRETE PATCH TO KEEP THE FILL MATERIAL FROM RAVELING, UNTIL REPLACED WITH A PAVEMENT PATCH.

PAVEMENT RESTORATION DETAIL



CURB RAMP DETECTABLE WARNING

All Sidewalk Curb Ramps Shall Have Detectable Warning Surfaces That Extend The Full Width Of The Ramp And In The Direction Of Travel 24 Inches (610 mm) From The Back Of Curb.

PERMIT SET
MUST BE ON JOBSITE AT ALL TIMES DURING CONSTRUCTION

MATERIALS
ALL MATERIAL USED AND INSTALLATIONS WITHIN THE PUBLIC RIGHT OF WAY OR EASEMENTS SHALL BE IN ACCORDANCE WITH BROWARD COUNTY HIGHWAY CONSTRUCTION AND ENGINEERING DIVISION SPECIFICATIONS.

NOTE:
APPROVAL OF THIS PLAN DOES NOT CONSTITUTE A PERMIT FOR CONSTRUCTION. A PERMIT FOR CONSTRUCTION MUST BE OBTAINED FROM THE BROWARD COUNTY HIGHWAY CONSTRUCTION AND ENGINEERING DIVISION PRIOR TO COMMENCING CONSTRUCTION IN THE PUBLIC RIGHT OF WAY.

NOTICE
INSPECTION REQUIRED
24 HRS. PRIOR TO COMMENCING ANY WORK IN THE PUBLIC RIGHT OF WAY CONTACT THE BROWARD COUNTY HIGHWAY CONSTRUCTION AND ENGINEERING DIVISION AT (954)577-4600 FOR INSPECTION.



Sun-Tech Engineering, Inc.
Engineers - Planners - Surveyors
1600 West Oakland Park Boulevard
FL Lauderdale, FL 33311
www.suntecheng.com
Certificate of Auth. # 7087
Phone (954)777-3123
Fax (954)777-3114

NO.	DATE	REVISIONS DESCRIPTION

MIDTOWN RESIDENCES
@ COCONUT CREEK
COCONUT CREEK
FLORIDA
OFFSITE IMPROVEMENTS

DATE:
Oct. 2015

SCALE:
1" = 20'

DESIGNED BY:
C.R.L.

DRAWN BY:
A.E.V.

JOB NUMBER
15-3715

SHEET No.
C-6.2

SEAL

Jan 20 2016

CLIFFORD R. LOUTAN, P.E.
FL. REG. NO. 56890