

REVISIONS	BY
2-19-14 RESUBMITTAL	
4-3-14 SITE PLAN RESUBMITTAL	
8-7-14 SITE PLAN RESUBMITTAL	

**MIDTOWN RESIDENCES AT COCONUT CREEK**  
 FOR: FLORIDA CRYSTALS  
 LOCATED AT: COCONUT CREEK, FLORIDA

MSA ARCHITECTS, INC.  
 MIAMI OFFICE  
 7695 SW 104th ST.  
 SUITE 1115  
 MIAMI, FLORIDA 33156  
 (305) 273-9911

**MSA ARCHITECTS**  
 ARCHITECTURE & PLANNING

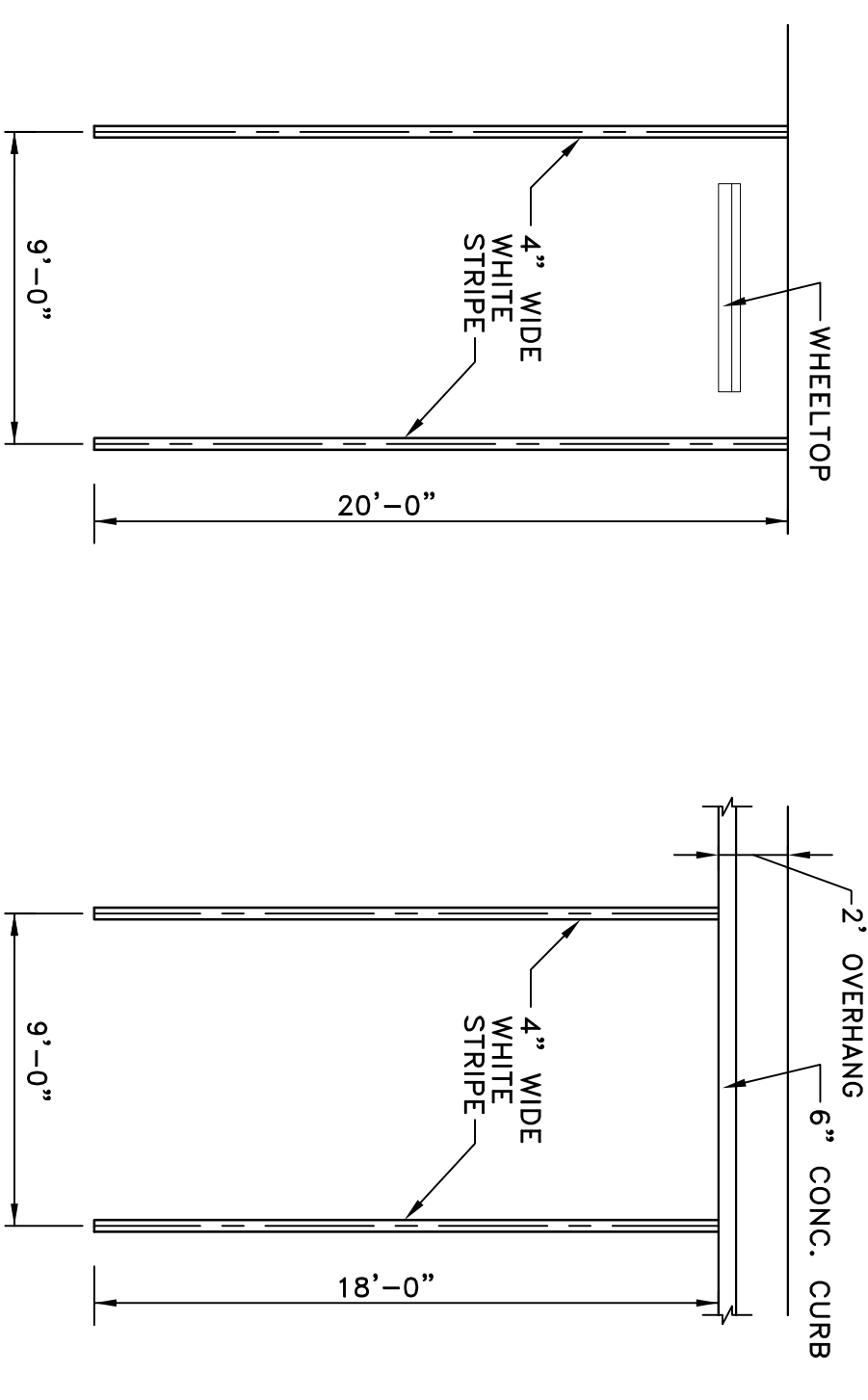
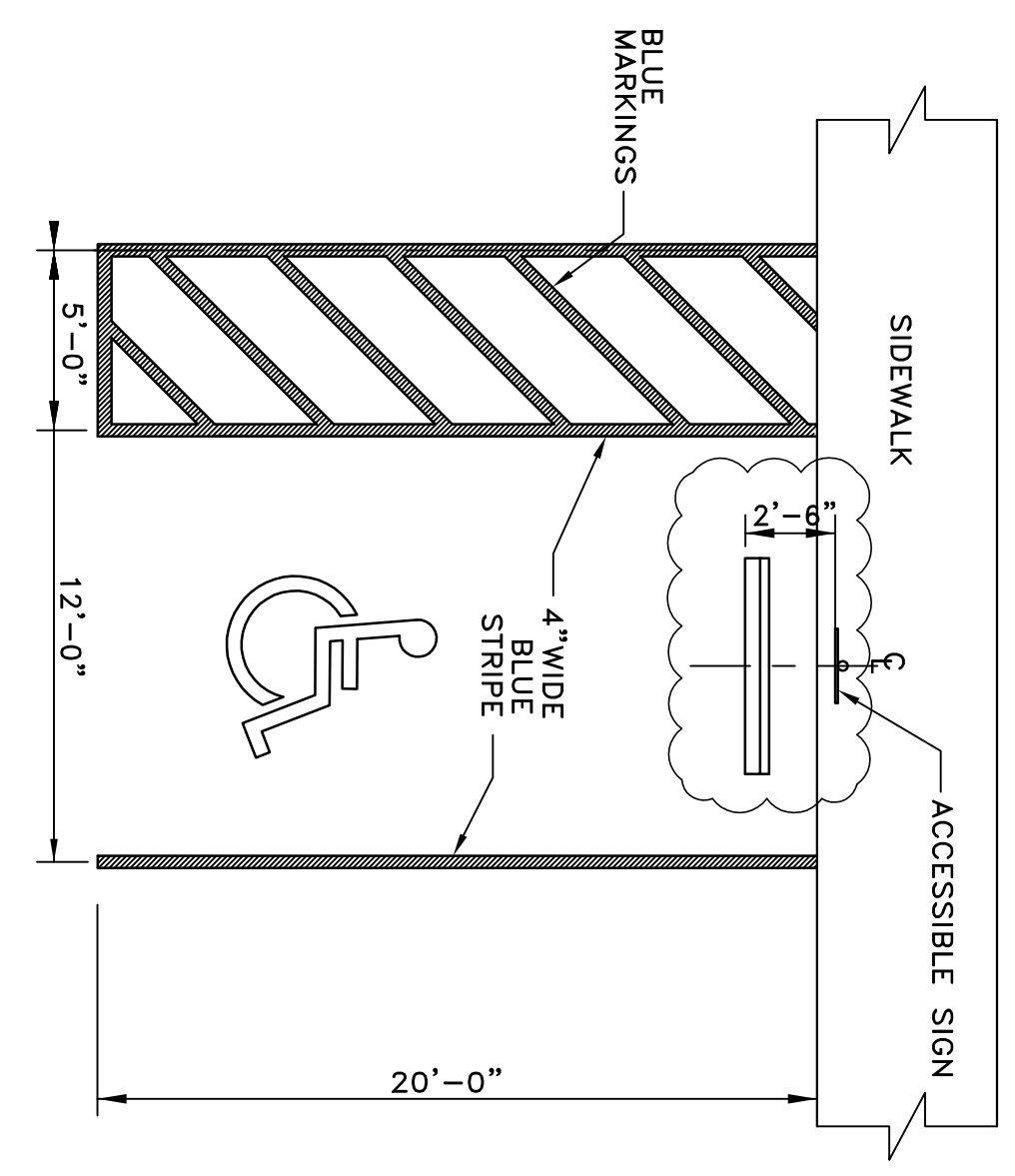
COPYRIGHT © 2011 MSA ARCHITECTS, INC. THE ARCHITECTURAL DESIGN AND DETAIL DRAWINGS FOR THIS BUILDING AND/OR OVERALL PROJECT ARE THE LEGAL PROPERTY OF AND ALL RIGHTS ARE RESERVED BY THE ARCHITECT.

DRAWN	
CHECKED	
DATE	12/19/2013
SCALE	AS SHOWN
JOB NO.	
SHEET	

**CONSULTING ENGINEERING & SCIENCE, INC.**  
 3311 N.W. 107th Avenue, Suite 200  
 Miami, Florida 33177  
 Phone: (305) 571-5555  
 Fax: (305) 571-5555  
 EB-0003255

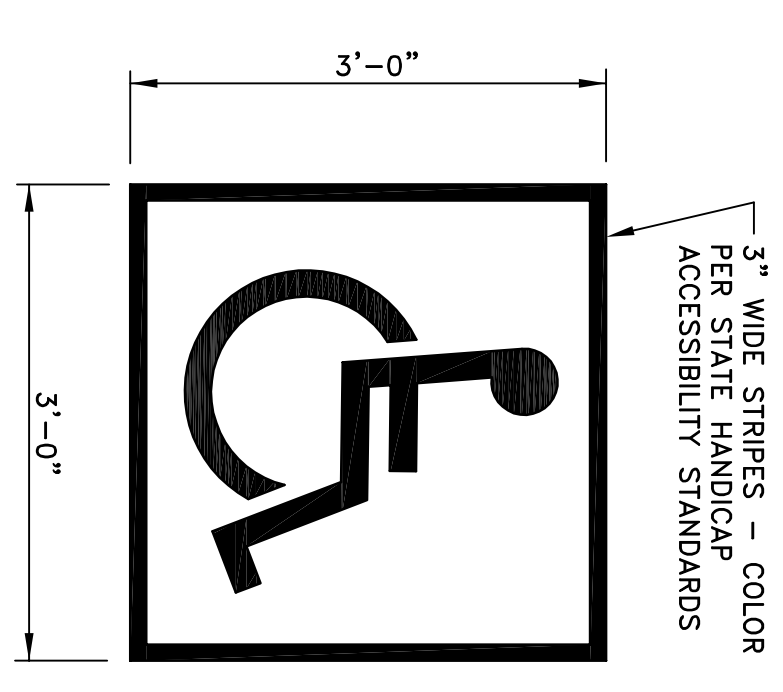
FOR THE FIRM:  
 RICHARD B. BOCHNOVICH  
 P.E. - 19833

CES PROJECT NO.: 13075

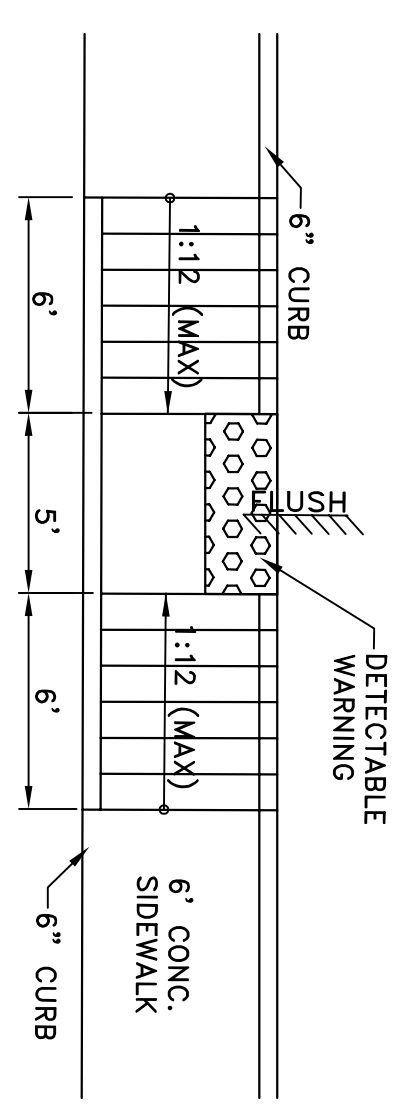


**STANDARD PARKING DETAIL**  
 (W/ WHEELSTOP) SCALE: 3/16" = 1'-0"

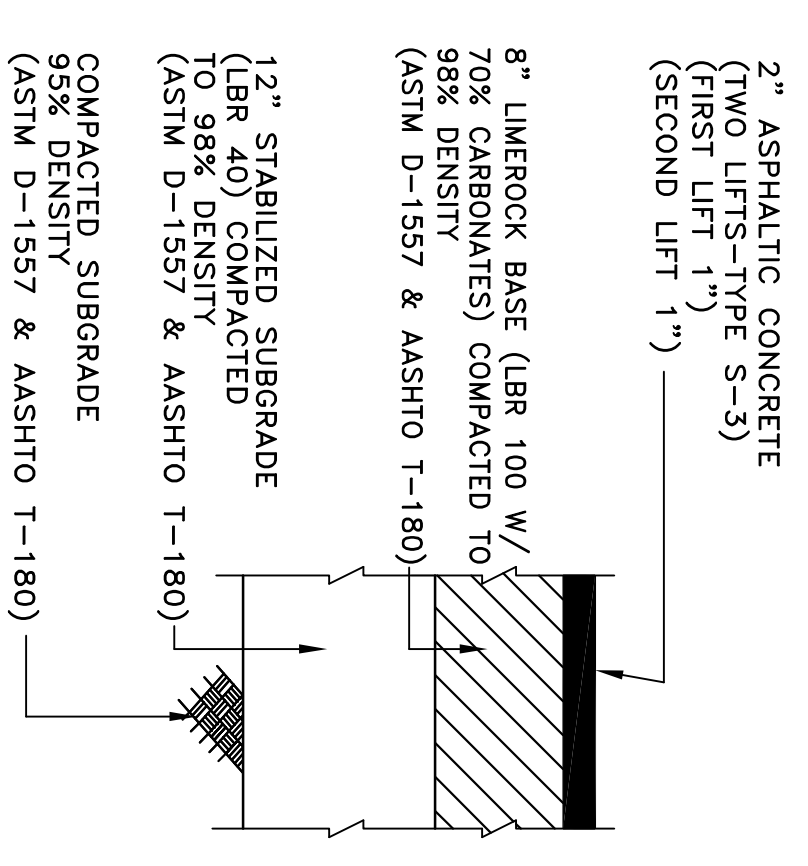
**STANDARD PARKING DETAIL**  
 (W/ CURB) SCALE: 3/16" = 1'-0"



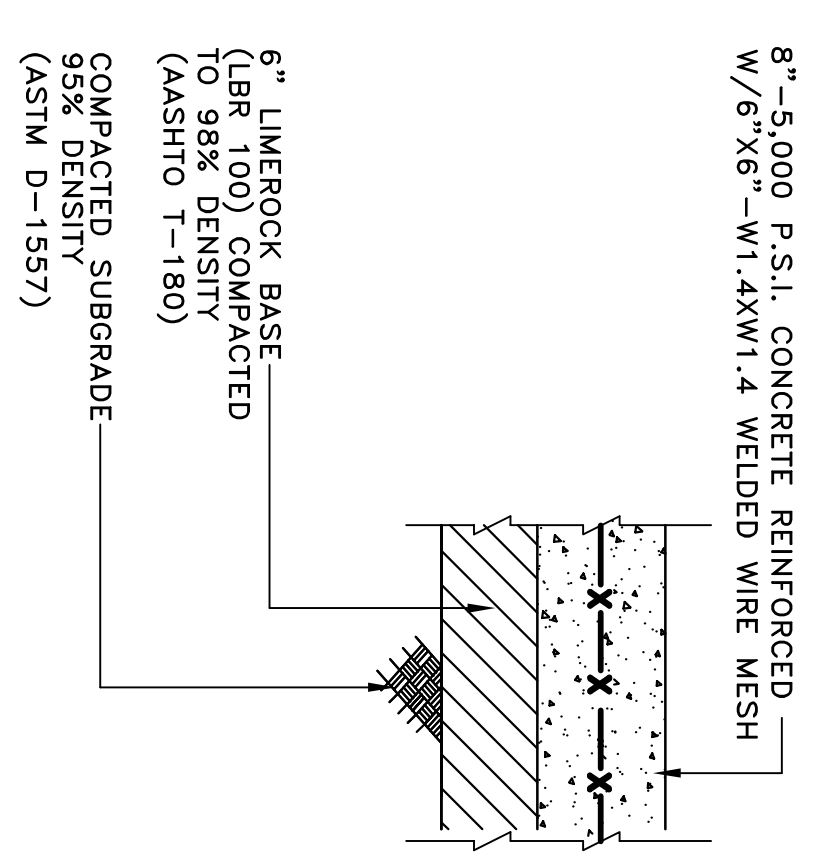
**SYMBOL OF ACCESSIBILITY**  
 N.T.S.



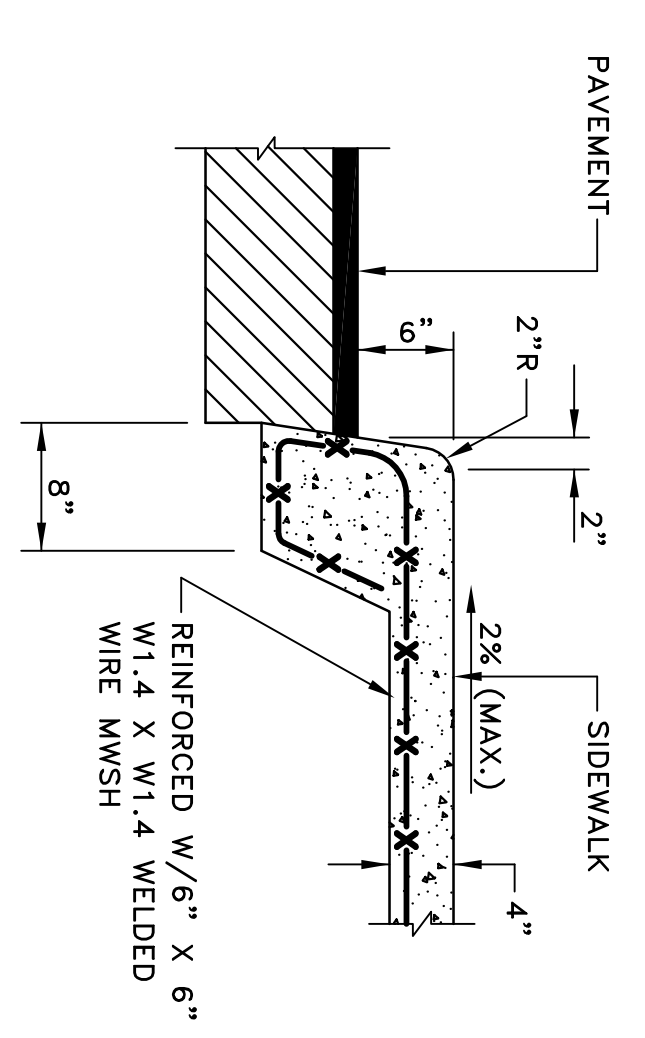
**ADA RAMP DETAIL**  
 SCALE: 3/16" = 1'-0"



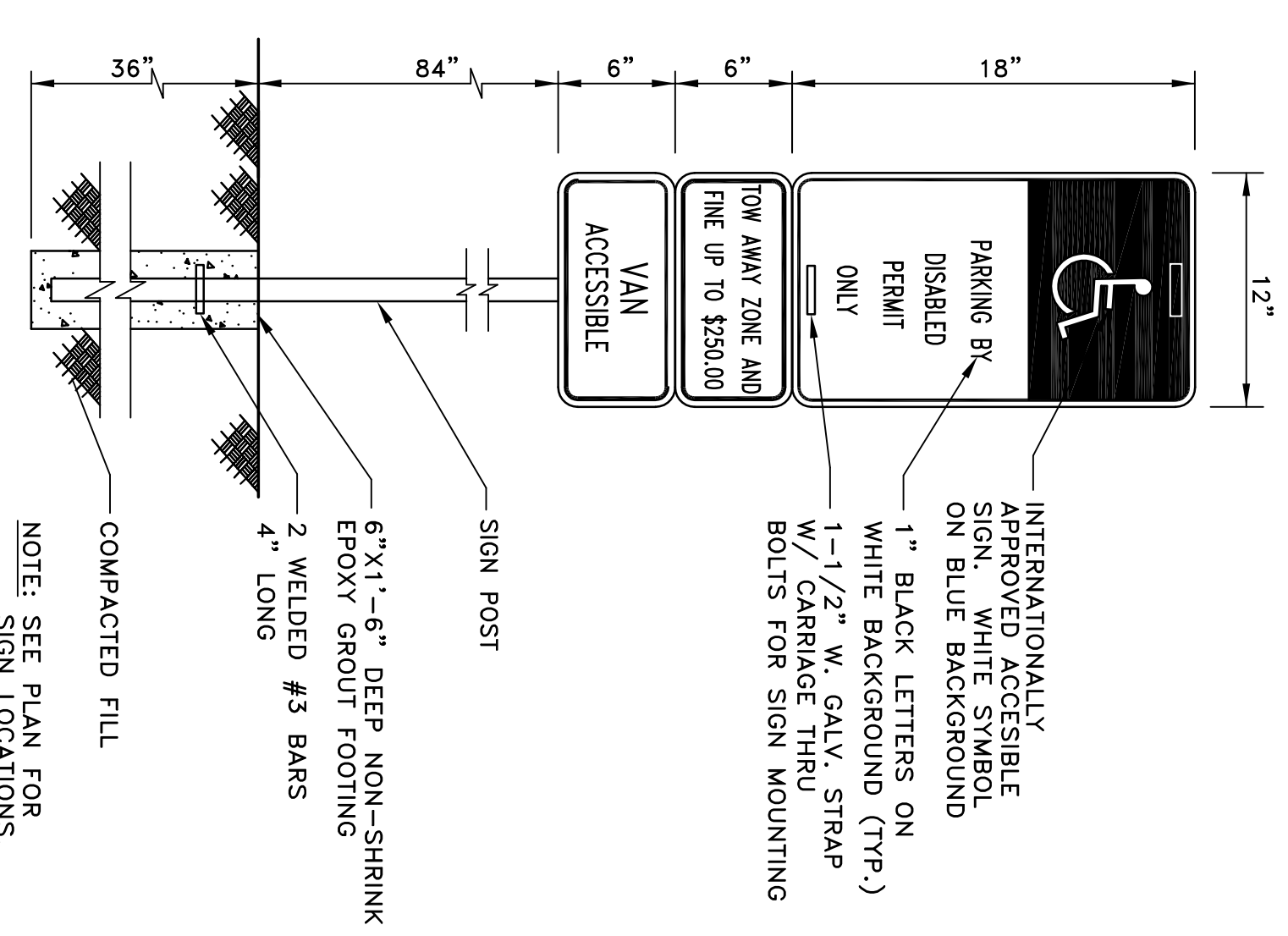
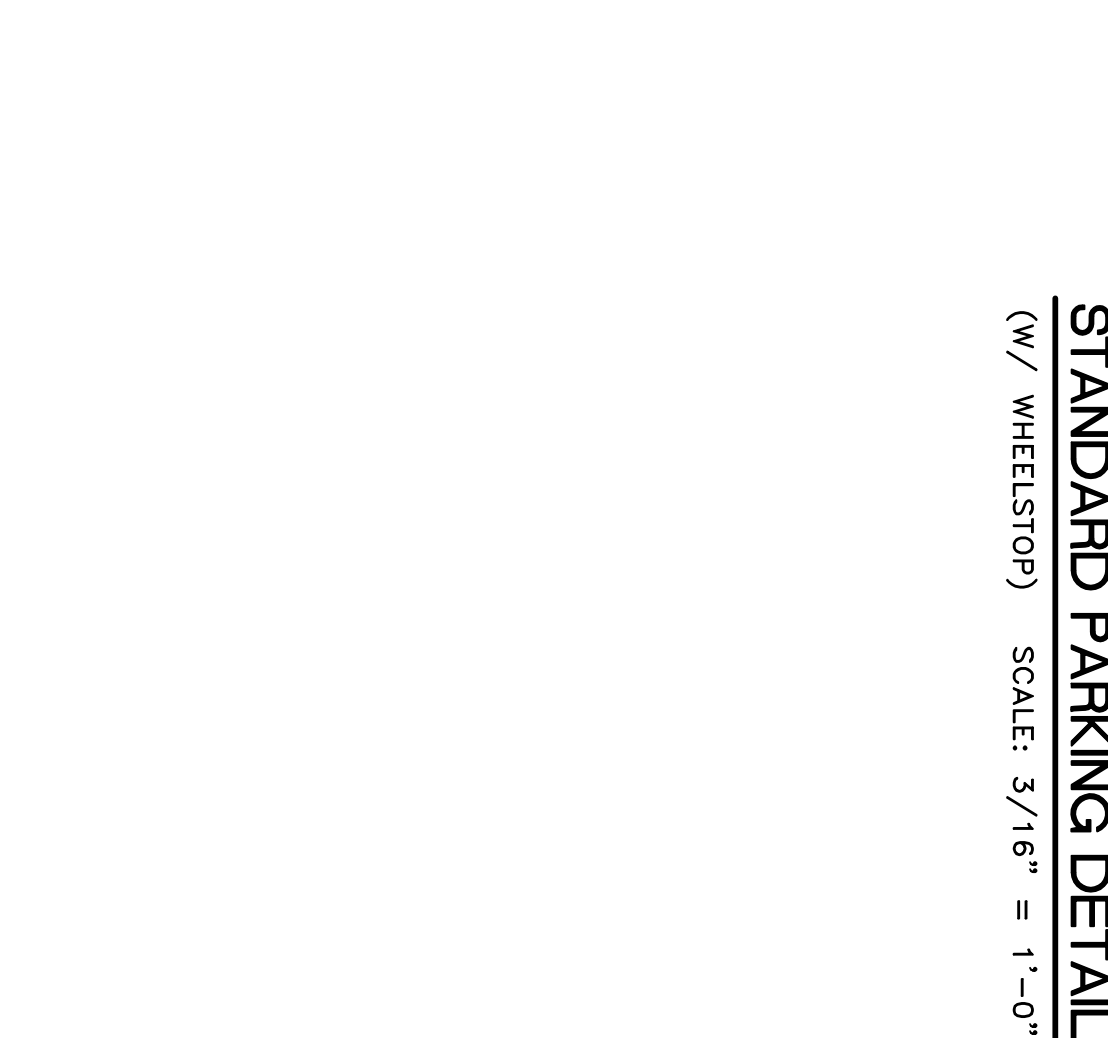
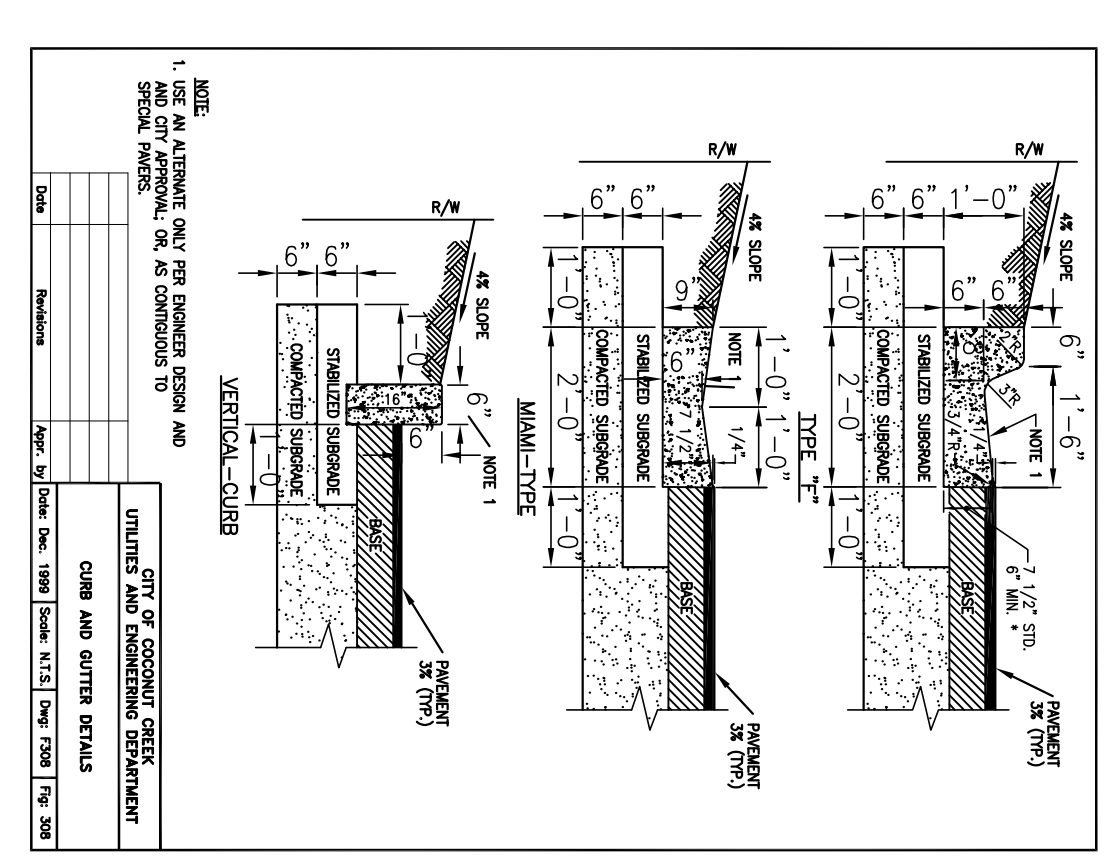
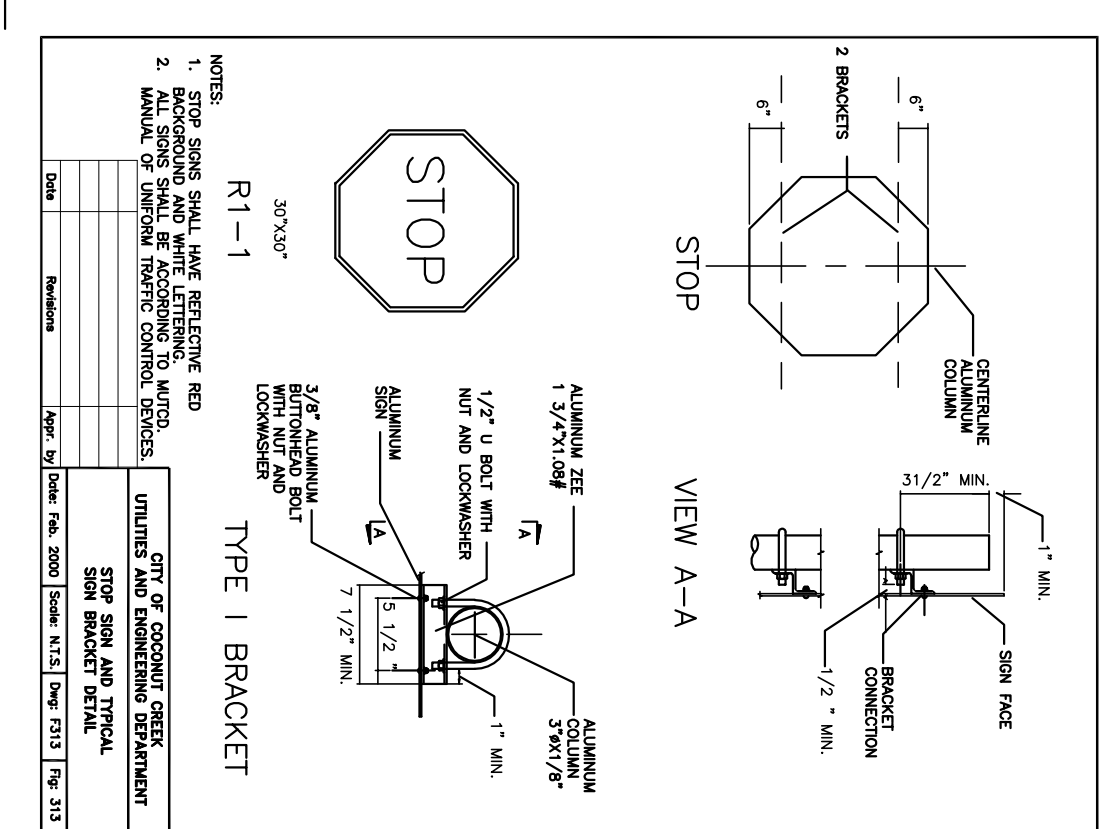
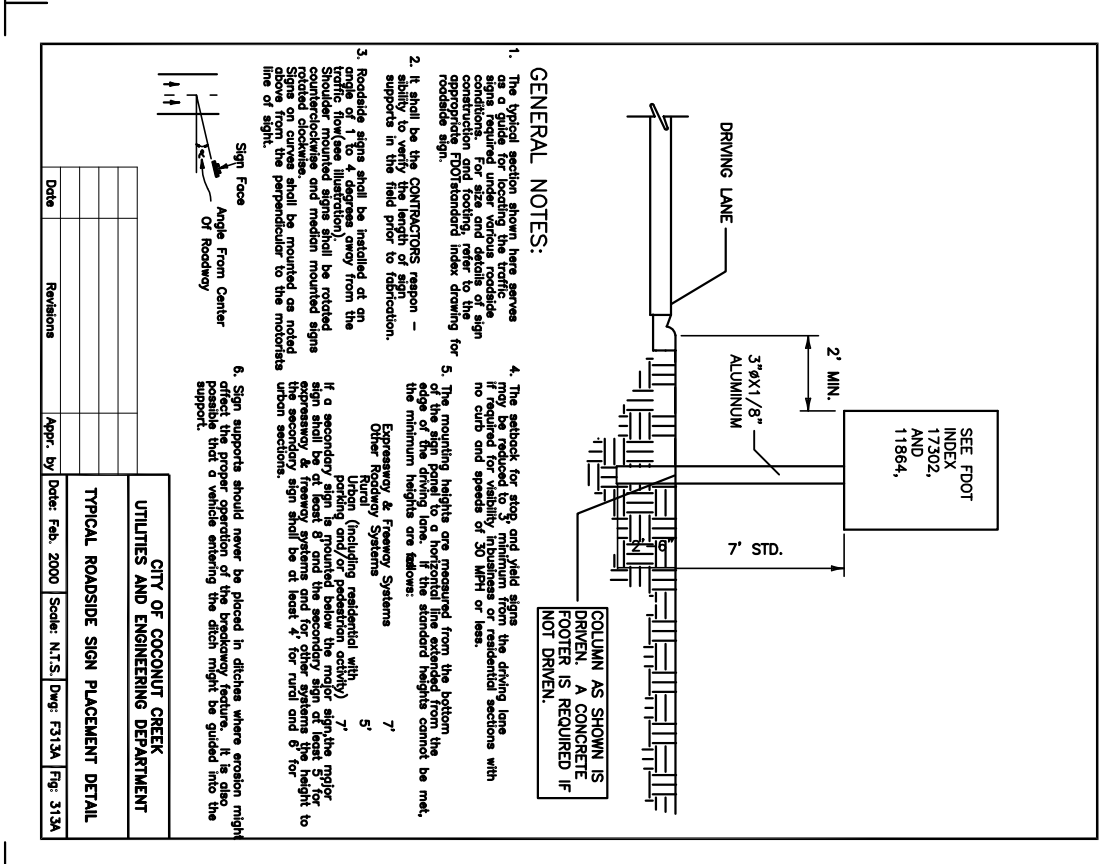
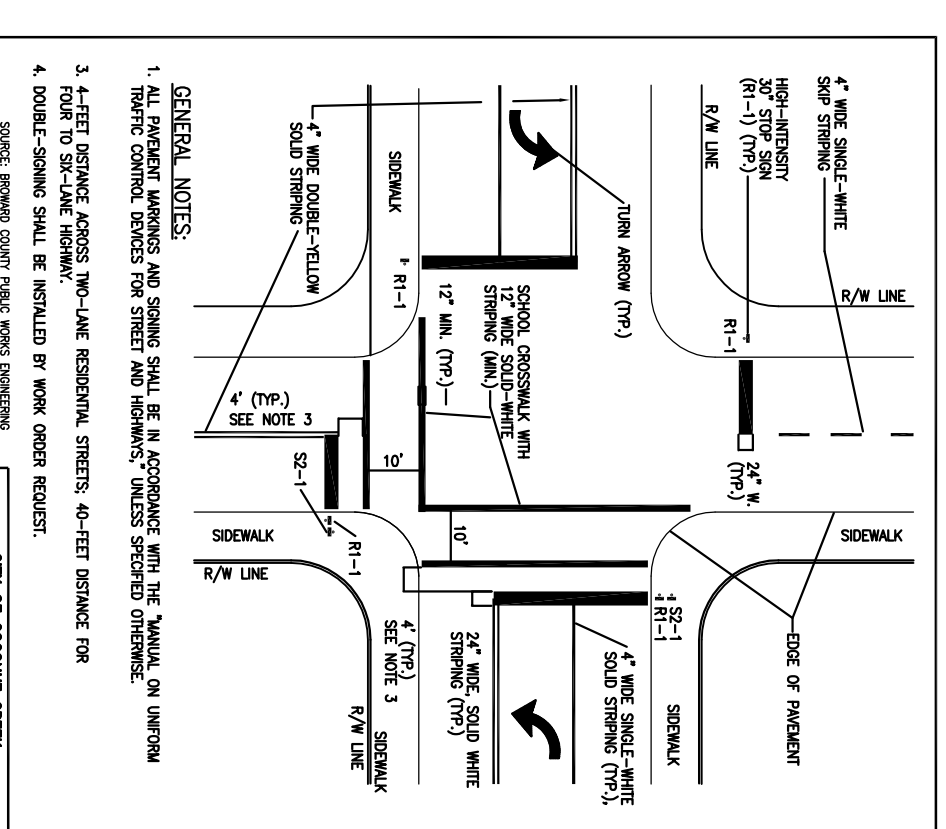
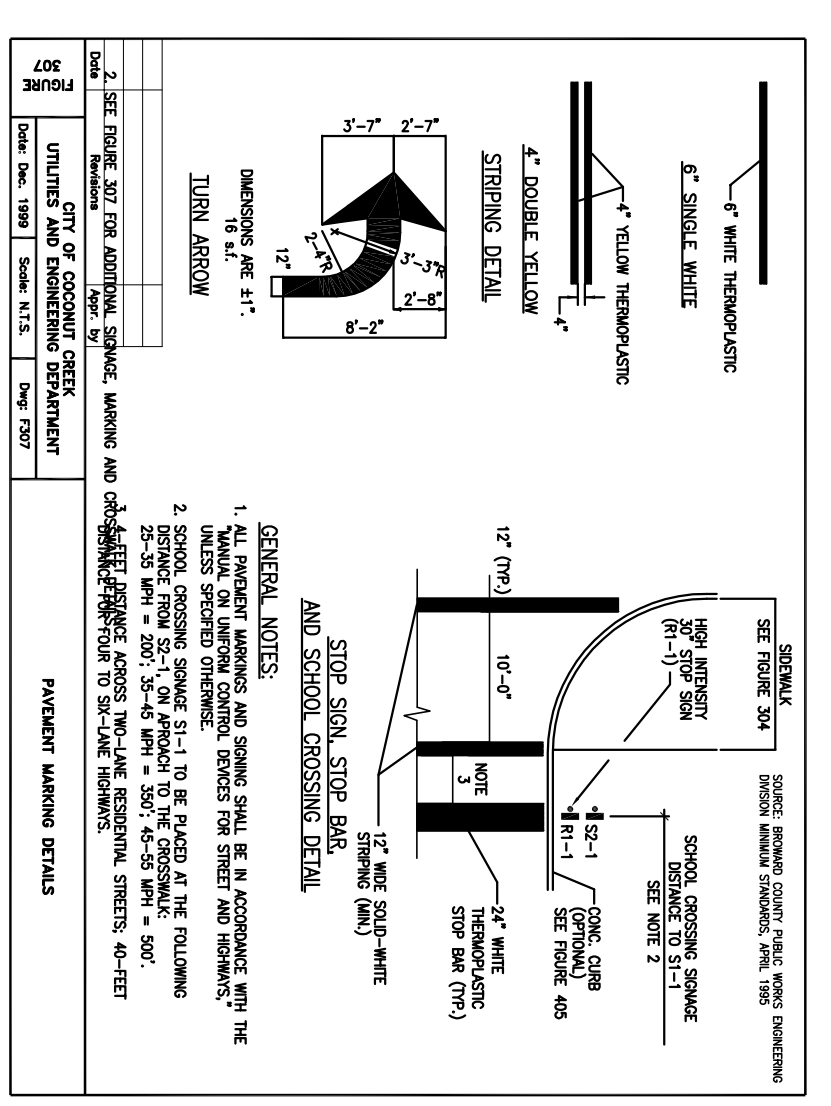
**ASPHALTIC PAVEMENT SECTION**  
 SCALE: 1" = 1'-0"



**CONCRETE PAVEMENT SECTION**  
 SCALE: 1" = 1'-0"



**TURNDOWN SIDEWALK DETAIL**  
 SCALE: 1" = 1'-0"



**ACCESSIBLE SIGN**  
 N.T.S.