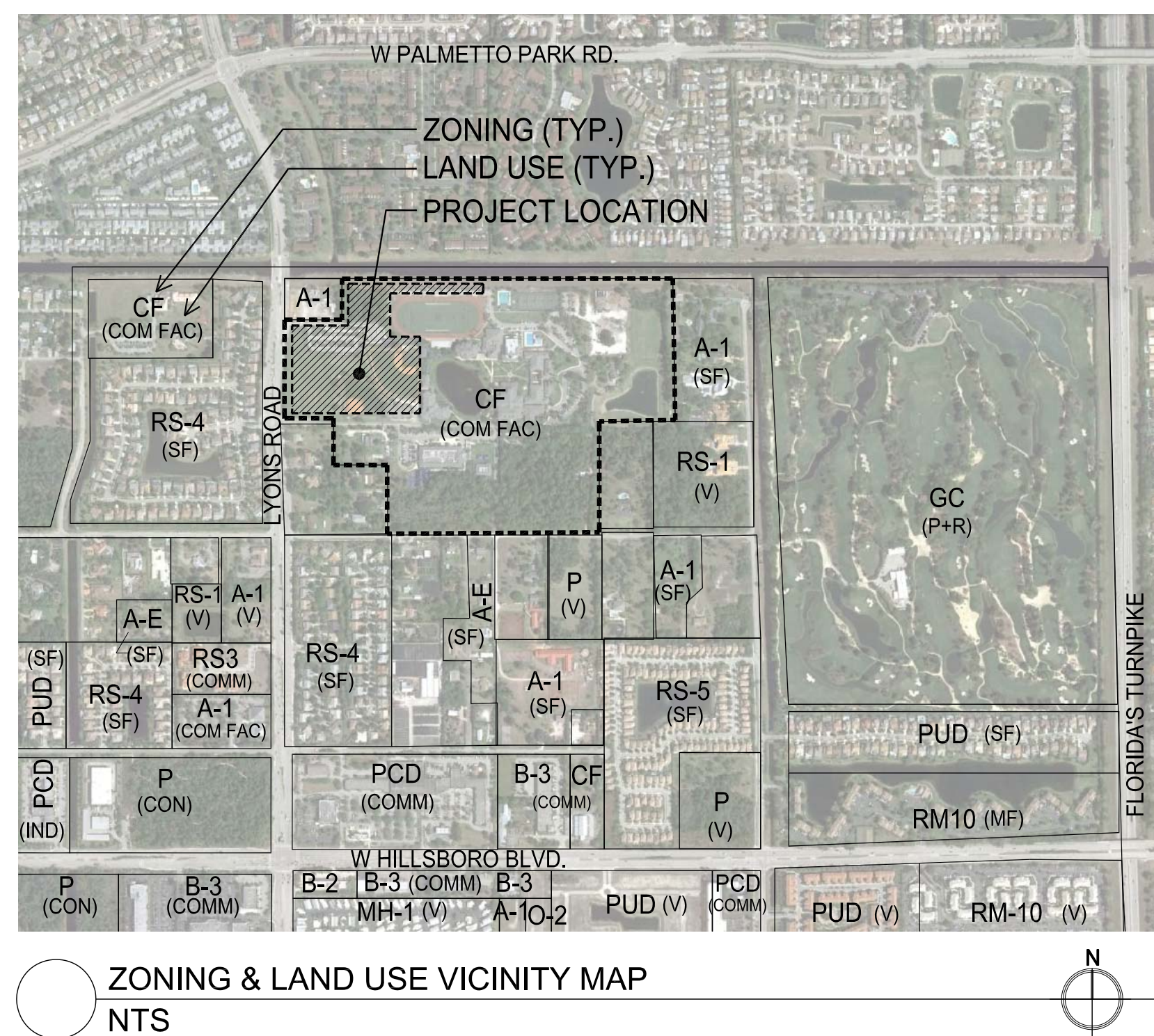




NORTH BROWARD PREPARATORY SCHOOL ATHLETIC & WELLNESS CENTER



		ISSUE DATE						ISSUE DATE			
		DRC 3/25/2014	DRC (RESUBMIT) 4/22/2014	DRC (RESUBMIT) 11/25/2014	DRC (RESUBMIT) 12/17/2014			DRC 3/25/2014	DRC (RESUBMIT) 4/22/2014	DRC (RESUBMIT) 11/25/2014	DRC (RESUBMIT) 12/17/2014
SHEET NO.	DESCRIPTION					SHEET NO.	DESCRIPTION				
G-000	COVER SHEET	•	•	•	•	LP-1	LANDSCAPE PLAN - SW SECTION	•	•	•	•
A-100	OVERALL ARCHITECTURAL SITE PLAN	•	•	•	•	LP-2	LANDSCAPE PLAN - NW SECTION	•	•	•	•
A-101	ENLARGED ARCHITECTURAL SITE PLAN	•	•	•	•	LP-3	LANDSCAPE PLAN - NE SECTION	•	•	•	•
C-101	OVERALL PLAN	•	•	•	•	LP-4	LANDSCAPE SPECIFICATIONS	•	•	•	•
C-201	PRELIMINARY HORIZONTAL CONTROL PLAN	•	•	•	•	TR-1	TREE MITIGATION PLAN	•	•	•	•
C-202	PRELIMINARY HORIZONTAL CONTROL PLAN	•	•	•	•	TR-2	TREE MITIGATION DATA	•	•	•	•
1 OF 3	OVERALL CAMPUS SURVEY	•	•	•	•	ES-100	ELECTRICAL SITE PLAN	•	•	•	•
2 OF 3	OVERALL CAMPUS SURVEY	•	•	•	•	ES-101	ELECTRICAL SPECIFICATIONS SHEET	•	•	•	•
3 OF 3	OVERALL CAMPUS SURVEY	•	•	•	•	C-301	PRELIMINARY PAVING, GRADING & DRAINAGE PLAN	•	•	•	•
1 OF 6	TOPOGRAPHY & TREE SURVEY	•	•	•	•	C-302	PRELIMINARY PAVING, GRADING & DRAINAGE PLAN	•	•	•	•
2 OF 6	TOPOGRAPHY & TREE SURVEY	•	•	•	•	C-401	PRELIMINARY UTILITY PLAN	•	•	•	•
3 OF 6	TOPOGRAPHY & TREE SURVEY	•	•	•	•	C-402	PRELIMINARY UTILITY PLAN	•	•	•	•
4 OF 6	TOPOGRAPHY & TREE SURVEY	•	•	•	•	C-500	PAVING, GRADING AND DRAINAGE DETAILS	•	•	•	•
5 OF 6	TOPOGRAPHY & TREE SURVEY	•	•	•	•	C-501	UTILITY DETAILS	•	•	•	•
6 OF 6	TOPOGRAPHY & TREE SURVEY	•	•	•	•	C-502	UTILITY DETAILS	•	•	•	•
1 OF 3	RECORDED PLAT	•	•	•	•	C-503	SIGHT TRIANGLE DISTANCE EXHIBIT	•	•	•	•
2 OF 3	RECORDED PLAT	•	•	•	•						
3 OF 3	RECORDED PLAT	•	•	•	•						
1 OF 2	PROPOSED PLAT (REFERENCE ONLY)	•	•	•	•						
2 OF 2	PROPOSED PLAT (REFERENCE ONLY)	•	•	•	•						
A-201	BUILDING FLOOR PLANS	•	•	•	•						
A-601	EXTERIOR BUILDING ELEVATIONS	•	•	•	•						

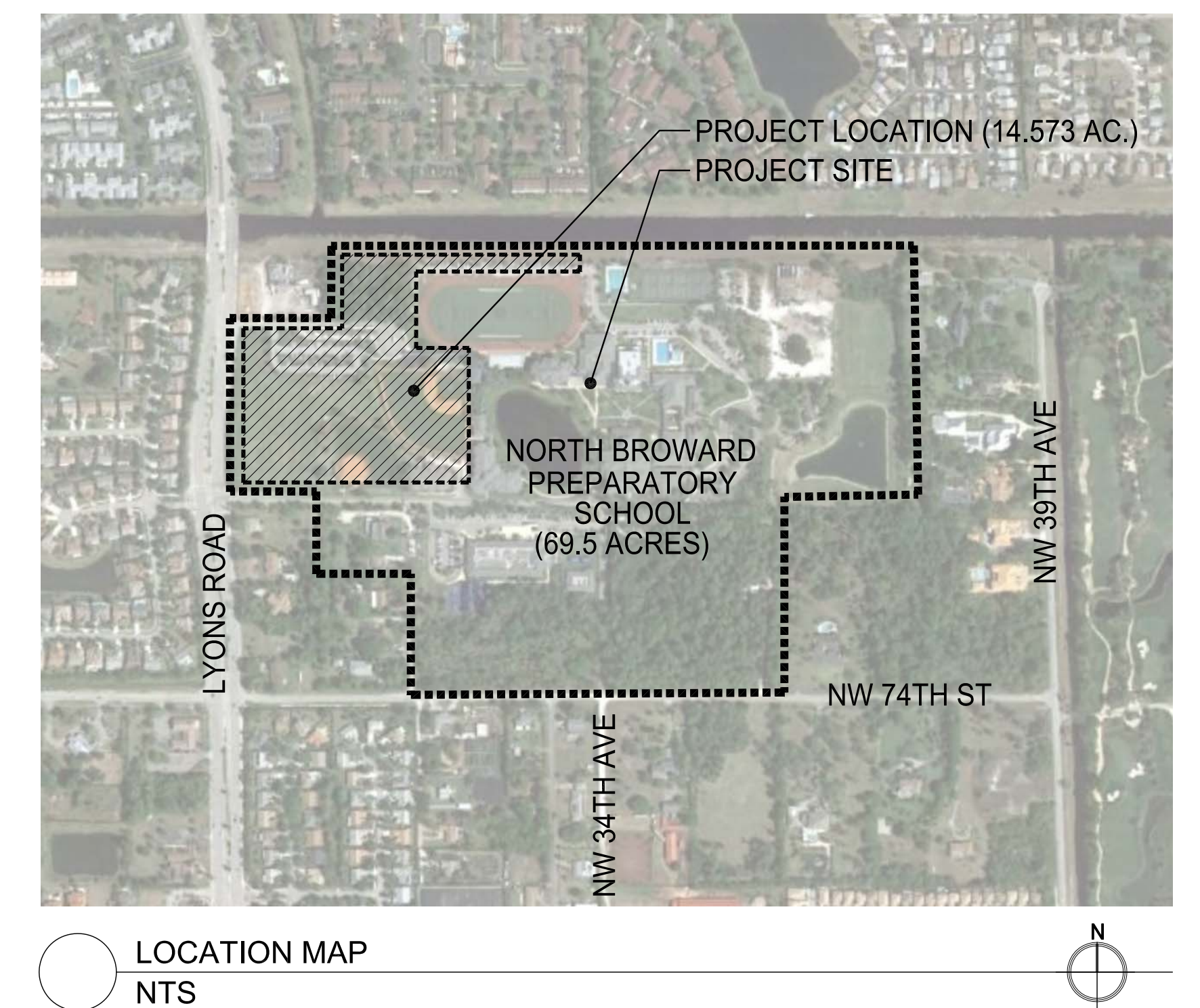


SUBMITTAL:
DEVELOPMENT REVIEW COMMITTEE SITE PLAN
MARCH 25, 2014

DRC RESUBMITTAL COMMENTS #3: DEC. 17, 2014

PREPARED FOR:
DEPARTMENT OF SUSTAINABLE DEVELOPMENT
CITY OF COCONUT CREEK
4800 WEST COPANS ROAD
COCONUT CREEK, FL 33063

OWNER:
NORTH BROWARD PREPARATORY SCHOOL
7600 LYONS ROAD
COCONUT CREEK, FL 33073



SURVEYOR
AVIROM & ASSOCIATES, INC.
50 S.W. 2nd Avenue
Boca Raton, FL 33432 (561) 392-2594

CIVIL ENGINEER
Kimley»Horn
KIMLEY-HORN AND ASSOCIATES, INC.
1690 South Congress Avenue, Suite 100
Delray Beach, FL 33445 (561) 404-7250

STRUCTURAL ENGINEER
RGD CONSULTING ENGINEERS
1232 W Indiantown Rd Suite 104
Jupiter, FL 33458 (561) 743-0165

ARCHITECT
PGAL ARCHITECTS
791 Park of Commerce Blvd. Suite 400
Boca Raton, FL 33487 (561) 988-4002

MEP ENGINEER
RGD CONSULTING ENGINEERS
1232 W Indiantown Rd Suite 104
Jupiter, FL 33458 (561) 743-0165

LANDSCAPE ARCHITECT
A. Grant Thornbrough & Associates
132 North Swinton Avenue
Delray Beach, FL 33444 (561) 276-5050