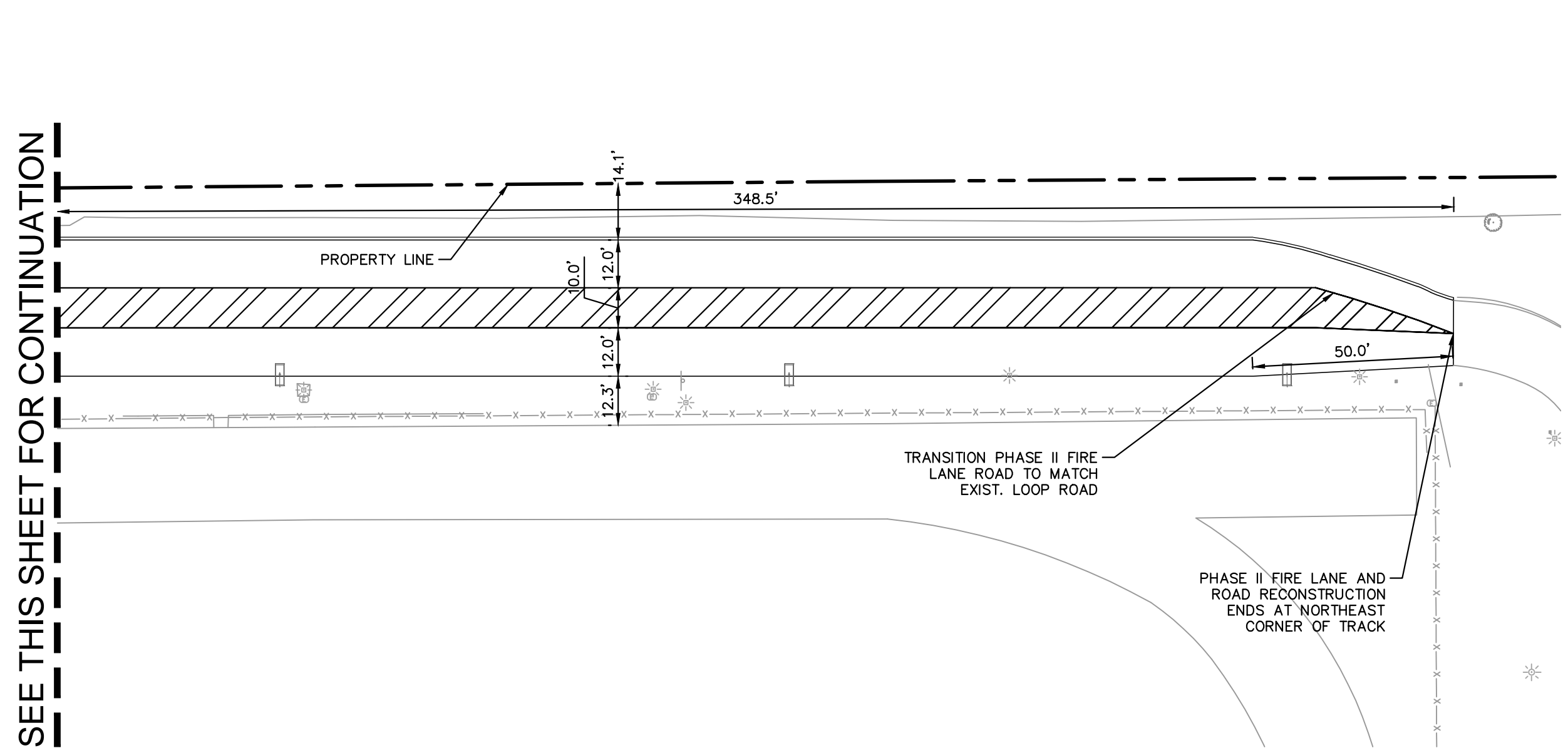


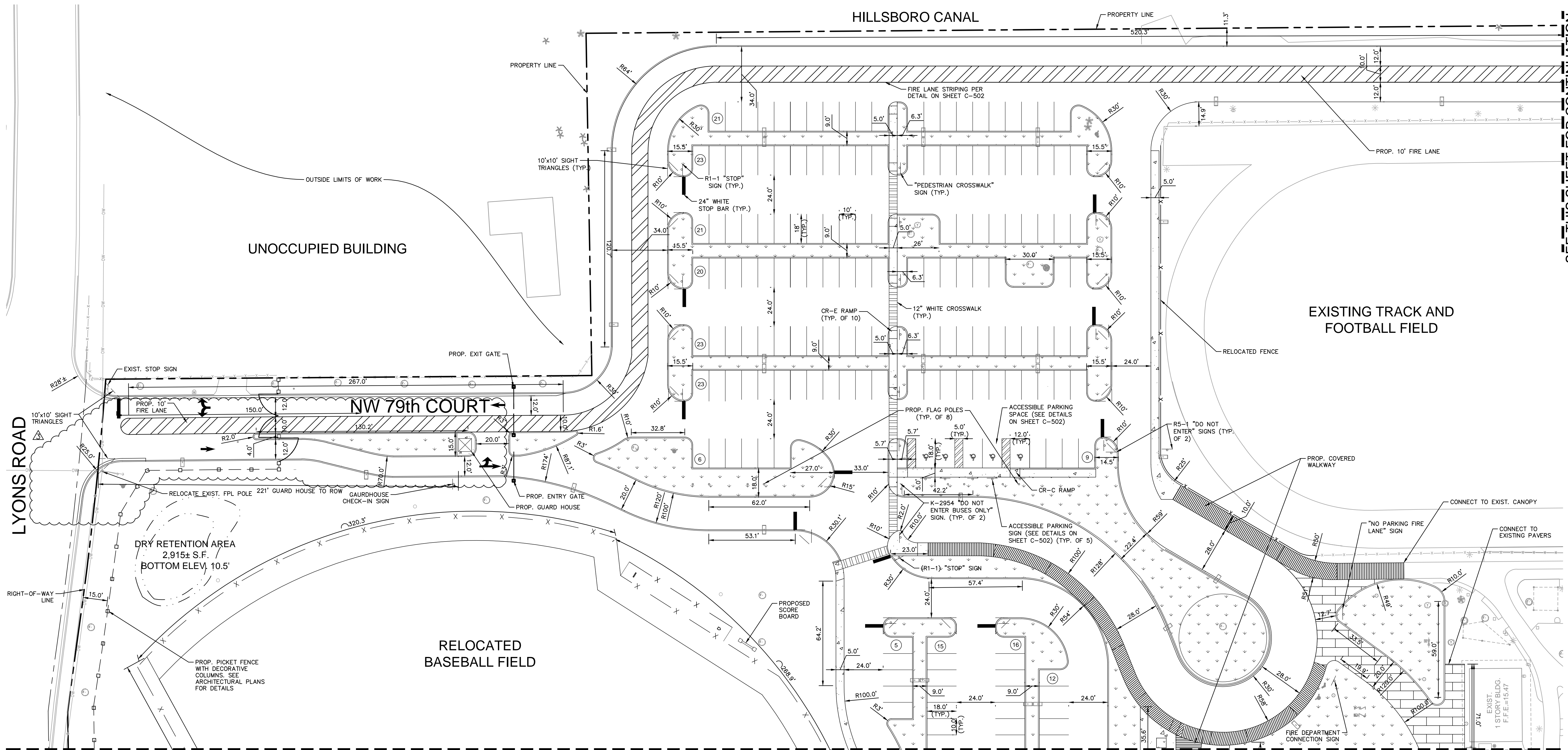
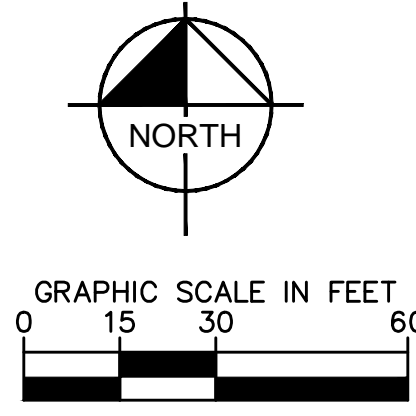
SEE THIS SHEET FOR CONTINUATION



**HORIZONTAL CONTROL NOTES**

1. ALL DIMENSIONS SHOWN ARE TO EDGE OF PAVEMENT FOR TYPE "F" CURB AND GUTTER, FACE OF CURB FOR TYPE "D" CURB OR EDGE OF PAVEMENT FOR NO CURB UNLESS OTHERWISE NOTED.
2. TYPE "F" CURB AND GUTTER AND TYPE "D" CURB SHALL BE CONSTRUCTED PER FDOT INDEX 300. ALL TYPE "D" CURB SHALL HAVE A 3' STRAIGHT TRANSITION AT THE BEGINNING AND ENDING POINTS.
3. REFER TO LANDSCAPE PLANS FOR PLANTING AND DETAILS.
4. ALL RADII ARE 5' UNLESS OTHERWISE NOTED.
5. ALL PAVEMENT MARKINGS ARE PAINT, UNLESS OTHERWISE NOTED.

PLANS ARE IN NAVD 1988 DATUM  
CONVERSION EQUATION IS BELOW:  
(NAVD 1988) + 1.55' = (NGVD 1929)



SEE SHEET C-202 FOR CONTINUATION

ADMINISTRATIVE APPROVAL (AA)



OWNER  
NORTH BROWARD  
PREPARATORY SCHOOL  
7600 LYONS ROAD  
COCONUT CREEK, FL 33073  
[T] 954.247.0011  
[F] 954.247.0012

ARCHITECT  
**PGAL**  
Pierce Goodwin Alexander & Liville  
791 PARK OF COMMERCE BLVD.  
SUITE 400  
BOCA RATON, FL 33487  
[T] 561.988.4002  
[F] 561.988.3002

CONSULTANT



1690 S CONGRESS AVE, SUITE 100,  
DELRAY BEACH, FL 33445  
PHONE: 561-330-2345 FAX: 561-330-2245  
WWW.KIMLEY-HORN.COM CA 00000696

PROJECT TITLE  
NORTH BROWARD  
PREPARATORY SCHOOL  
ATHLETIC & WELLNESS  
CENTER - BUILDING 900

PROJECT NUMBER  
R1002318.00

PROJECT LOCATION  
NORTH BROWARD  
PREPARATORY SCHOOL  
7600 LYONS ROAD  
COCONUT CREEK, FL 33073  
[T] 954.247.0011  
[F] 954.247.0012

DATE OF ISSUE  
APRIL 23, 2015

REVISIONS

AA	03/26/15
AA	04/23/15
AA	05/11/15

DESIGNER  
JJ

CHECKED BY  
JAW

DRAWN BY  
JJ

SUBMITTAL PHASE /  
SET DESCRIPTION  
DRC ADMINISTRATIVE  
APPROVAL (AA)

APPROVED

JASON A. WEBBER, P.E.  
FL P.E. #7882  
TO THE BEST OF MY KNOWLEDGE, THE PLANS  
AND SPECIFICATIONS COMPLY WITH THE  
APPLICABLE MINIMUM BUILDING CODES AND  
APPLICABLE MINIMUM LIFE SAFETY STANDARDS  
COPYRIGHT © 2015

SHEET TITLE  
**HORIZONTAL CONTROL  
AND SIGNING AND  
MARKING PLAN**

SHEET NUMBER  
**C-201**

SEE THIS SHEET FOR CONTINUATION