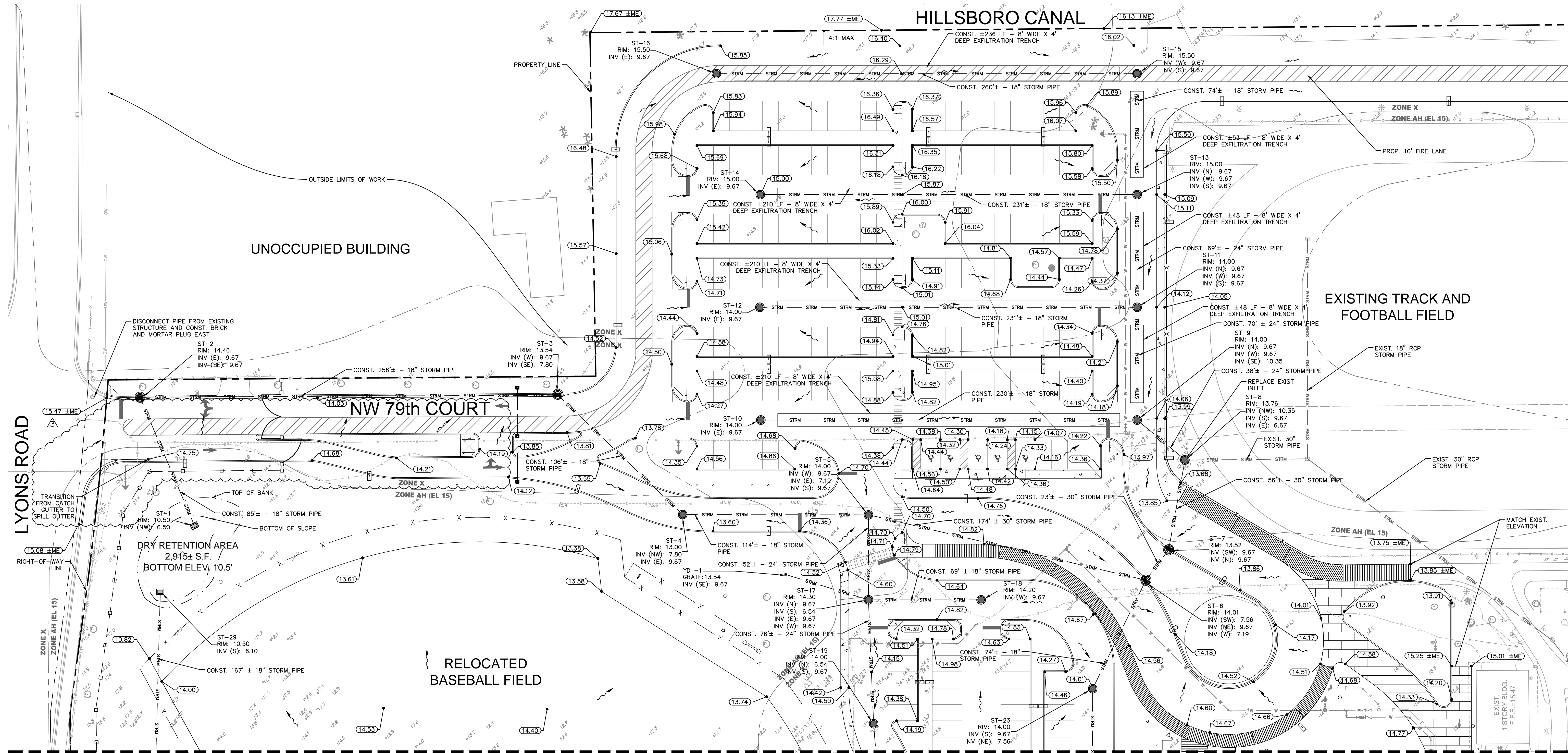


SEE THIS SHEET FOR CONTINUATION



STRUCTURE LIST:

- ST-1 CONST. USP 3-4.0 WITH USF GRATE 6210
- ST-2 CONST. USP 3-9.4 WITH USF FRAME AND GRATE 5130-6016
- ST-3 CONST. USP 3-9.4 WITH USF FRAME AND GRATE 5130-6016
- ST-4 CONST. USP 3-9.4 WITH USF FRAME AND GRATE 4155-6210
- ST-5 CONST. USP 3-9.4 WITH USF FRAME AND GRATE 4155-6210
- ST-6 CONST. USP 3-9.4 WITH USF FRAME AND GRATE 5130-6016
- ST-7 CONST. USP 3-9.4 WITH USF FRAME AND GRATE 5130-6016
- ST-8 CONST. USP 3-9.4 WITH USF FRAME AND GRATE 4155-6210
- ST-9 CONST. USP 3-9.4 WITH USF FRAME AND GRATE 4155-6210
- ST-10 CONST. USP 3-9.4 WITH USF FRAME AND GRATE 4155-6210
- ST-11 CONST. USP 3-9.4 WITH USF FRAME AND GRATE 4155-6210
- ST-12 CONST. USP 3-9.4 WITH USF FRAME AND GRATE 4155-6210
- ST-13 CONST. USP 3-9.4 WITH USF FRAME AND GRATE 5130-6016
- ST-14 CONST. USP 3-9.4 WITH USF FRAME AND GRATE 4155-6210
- ST-15 CONST. USP 3-9.4 WITH USF FRAME AND GRATE 4155-6210
- ST-16 CONST. USP 3-9.4 WITH USF FRAME AND GRATE 4155-6210
- ST-17 CONST. USP 3-9.4 WITH USF FRAME AND GRATE 4155-6210
- ST-18 CONST. USP 3-9.4 WITH USF FRAME AND GRATE 4155-6210
- ST-19 CONST. USP 3-9.4 WITH USF FRAME AND GRATE 4155-6210
- ST-23 CONST. USP 3-9.4 WITH USF FRAME AND GRATE 4155-6210
- ST-29 CONST. USP 3-4.0 WITH USF GRATE 6210
- YD-1 CONST. ADS DRAIN BASIN 12" DIAMETER (#281246), 12" STANDARD H-20 (#1299C6S)

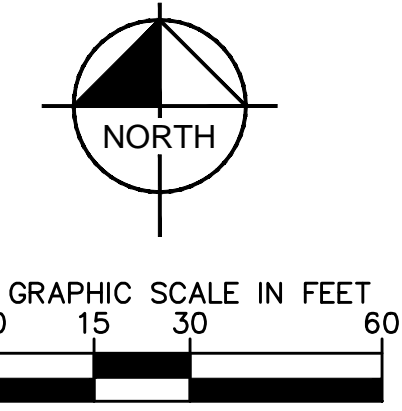
PAVING, GRADING, AND DRAINAGE NOTES:

1. DRAINAGE STRUCTURES SHALL BE CONSTRUCTED USING U.S. PRECAST (USP), U.S. FOUNDRY (USF), OR FLORIDA DEPARTMENT OF TRANSPORTATION STANDARD (FDOT) PRODUCTS AS SPECIFIED, OR APPROVED EQUAL.
2. ALL STORM STRUCTURES SHALL HAVE A MINIMUM 12" SUMP.
3. ALL STORM PIPE SHALL BE REINFORCED CONCRETE PIPE (RCP) OR HIGH DENSITY POLY-ETHYLENE (HDPE) PIPE.
4. ALL PIPE LENGTHS ARE MEASURED FROM CENTER OF STRUCTURES UNLESS OTHERWISE NOTED.
5. CONTRACTOR SHALL PROVIDE ALL FITTINGS, COUPLINGS, OR ADAPTERS NECESSARY TO CONNECT TO THE BUILDING PLUMBING AND TO CONNECT ROOF LEADERS TO THE MAIN STORM LINES. ALL ROOF LEADERS SHALL BE AT 1/4" MIN. SLOPE UNLESS OTHERWISE NOTED. COORDINATE BUILDING ENTRIES WITH PLUMBING PLANS.
6. THE CROSS SLOPE ON ADA ACCESSIBLE ROUTES SHALL NOT EXCEED 2.0%. THE LONGITUDINAL SLOPE ON ADA ACCESSIBLE ROUTES (NOT INCLUDING RAMPS) SHALL NOT EXCEED 5.0%. THE LONGITUDINAL SLOPE FOR RAMPS SHALL NOT EXCEED 1V:12H (8.3%). ACCESSIBLE PARKING SPACES SHALL NOT EXCEED 2.0% IN ANY DIRECTION (INCLUDING DIAGONAL).
7. CONTRACTOR SHALL CLEAN ALL PROPOSED AND EXISTING IMPACTED DOWNSTREAM/DRAINAGE STRUCTURES AND PIPES UPON COMPLETION OF CONSTRUCTION.

LEGEND:

- EXISTING GRADE
- PROPOSED GRADE
- MATCH EXISTING GRADE

PLANS ARE IN NAVD 1988 DATUM  
CONVERSION EQUATION IS BELOW:  
(NAVD 1988) + 1.55' = (NGVD 1929)



ADMINISTRATIVE APPROVAL (AA)



OWNER  
NORTH BROWARD  
PREPARATORY SCHOOL  
7600 LYONS ROAD  
COCONUT CREEK, FL 33073  
(T) 954.247.0011  
(F) 954.247.0012

ARCHITECT



Pierce Goodwin Alexander & Liville  
791 PARK OF COMMERCE BLVD.  
SUITE 400  
BOCA RATON, FL 33487  
(T) 561.988.4002  
(F) 561.988.3002

CONSULTANT



1690 S CONGRESS AVE., SUITE 100,  
DELRAY BEACH, FL 33445  
PHONE: 561-330-2345 FAX: 561-330-2345  
WWW.KIMLEY-HORN.COM CA 00006996

PROJECT TITLE  
NORTH BROWARD  
PREPARATORY SCHOOL  
ATHLETIC & WELLNESS  
CENTER - BUILDING 900

PROJECT NUMBER  
R1002318.00

PROJECT LOCATION  
NORTH BROWARD  
PREPARATORY SCHOOL  
7600 LYONS ROAD  
COCONUT CREEK, FL 33073  
(T) 954.247.0011  
(F) 954.247.0012

DATE OF ISSUE  
APRIL 23, 2015

REVISIONS  
AA 03/26/15  
AA 04/23/15  
AA 05/11/15

DESIGNER

JJ

CHECKED BY DRAWN BY

JAW JJ

SUBMITTAL PHASE / SET DESCRIPTION

DRC ADMINISTRATIVE APPROVAL (AA)

APPROVED

JASON A. WEBBER, P.E.  
FL P.E. 73962

TO THE BEST OF MY KNOWLEDGE, THE PLANS AND SPECIFICATIONS COMPLY WITH THE APPLICABLE MINIMUM BUILDING CODES AND APPLICABLE MINIMUM LIFE SAFETY STANDARDS. COPYRIGHT © 2015

SHEET TITLE

PAVING GRADING AND DRAINAGE PLAN

SHEET NUMBER

C-301

SEE THIS SHEET FOR CONTINUATION

SEE SHEET C-302 FOR CONTINUATION