



OWNER  
 NORTH BROWARD  
 PREPARATORY SCHOOL  
 7600 LYONS ROAD  
 COCONUT CREEK, FL 33073  
 (T) 954.247.0011  
 (F) 954.247.0012

ARCHITECT  
**PGAL**  
 Pierce Goodwin Alexander & Liville  
 791 PARK OF COMMERCE BLVD.  
 SUITE 400  
 BOCA RATON, FL 33487  
 (T) 561.988.4002  
 (F) 561.988.3002

CONSULTANT  
**Kimley»Horn**  
 1690 S. CONGRESS AVE., SUITE 100  
 DELRAY BEACH, FL 33445  
 PHONE: 561-330-2245 FAX: 561-330-2245  
 WWW.KIMLEY-HORN.COM CA 0000696

PROJECT TITLE  
 NORTH BROWARD  
 PREPARATORY SCHOOL  
 ATHLETIC & WELLNESS  
 CENTER - BUILDING 900

PROJECT NUMBER  
 R1002318.00

PROJECT LOCATION  
 NORTH BROWARD  
 PREPARATORY SCHOOL  
 7600 LYONS ROAD  
 COCONUT CREEK, FL 33073  
 (T) 954.247.0011  
 (F) 954.247.0012

DATE OF ISSUE  
 APRIL 23, 2015

REVISIONS  
 AA 03/26/15  
 AA 04/23/15

DESIGNER  
 JJ

CHECKED BY DRAWN BY  
 JAW JJ

SUBMITTAL PHASE /  
 SET DESCRIPTION  
 DRC ADMINISTRATIVE  
 APPROVAL (AA)

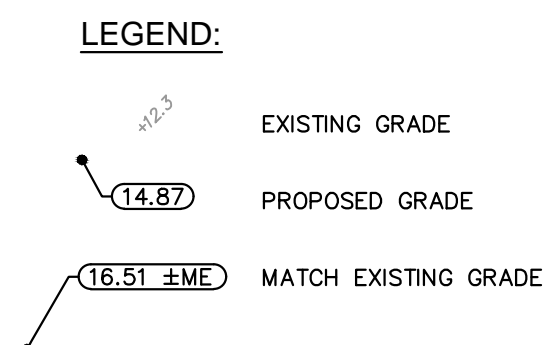
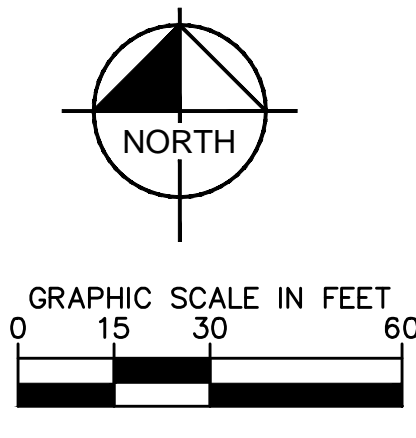
APPROVED

JASON A. WEBBER, P.E.  
 FL P.E. 73962  
 TO THE BEST OF MY KNOWLEDGE, THE PLANS  
 AND SPECIFICATIONS COMPLY WITH THE  
 APPLICABLE MINIMUM BUILDING CODES AND  
 APPLICABLE MINIMUM LIFE SAFETY STANDARDS  
 COPYRIGHT © 2015

SHEET TITLE  
**PAVING GRADING AND  
 DRAINAGE PLAN**

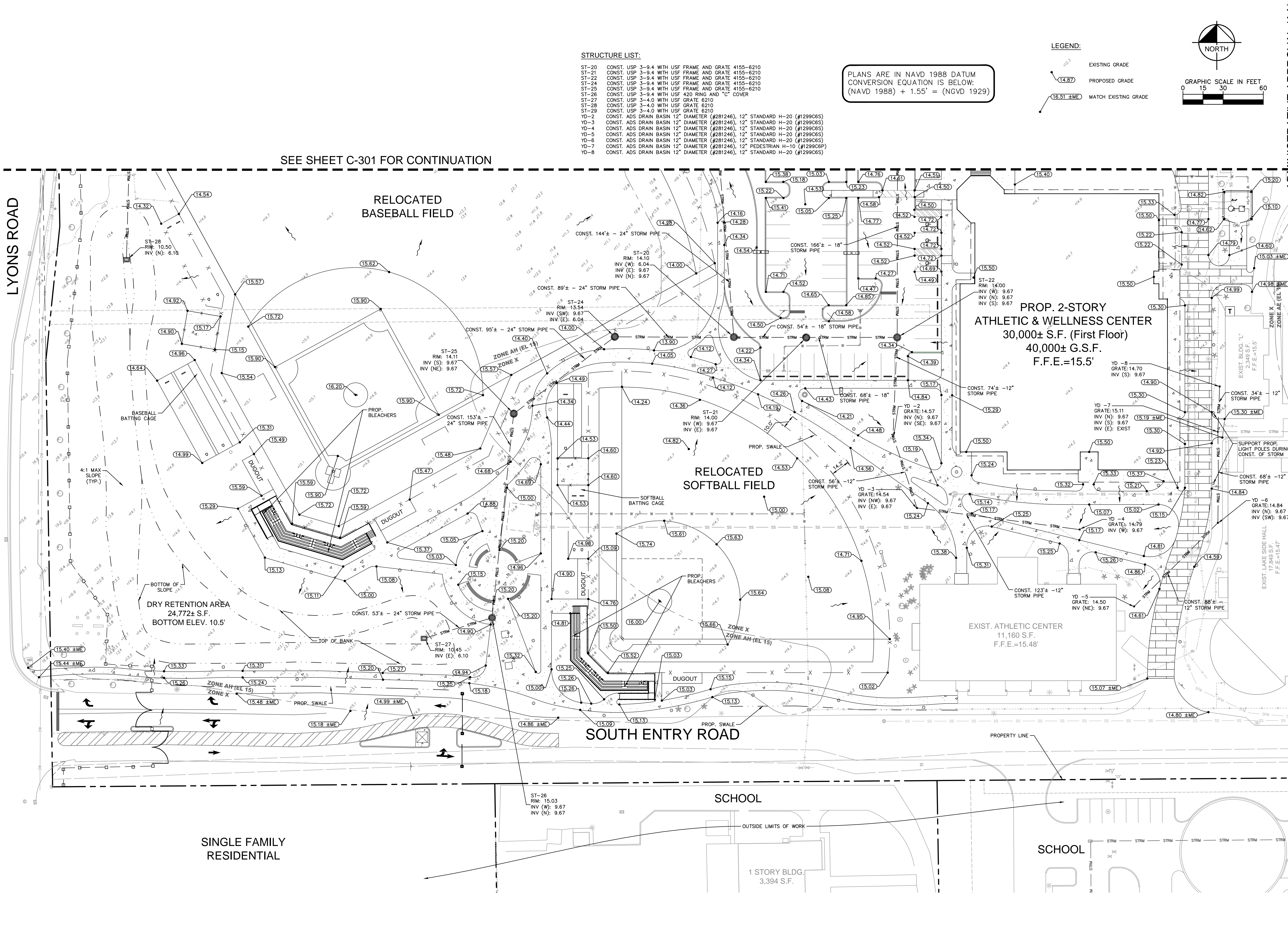
SHEET NUMBER  
**C-302**

ADMINISTRATIVE APPROVAL (AA)



PLANS ARE IN NAVD 1988 DATUM  
 CONVERSION EQUATION IS BELOW:  
 (NAVD 1988) + 1.55' = (NGVD 1929)

- STRUCTURE LIST:
- ST-20 CONST. USP 3-9.4 WITH USF FRAME AND GRATE 4155-6210
  - ST-21 CONST. USP 3-9.4 WITH USF FRAME AND GRATE 4155-6210
  - ST-22 CONST. USP 3-9.4 WITH USF FRAME AND GRATE 4155-6210
  - ST-24 CONST. USP 3-9.4 WITH USF FRAME AND GRATE 4155-6210
  - ST-25 CONST. USP 3-9.4 WITH USF FRAME AND GRATE 4155-6210
  - ST-26 CONST. USP 3-9.4 WITH USF FRAME AND GRATE 4155-6210
  - ST-26 CONST. USP 3-9.4 WITH USF 420 RING AND "C" COVER
  - ST-27 CONST. USP 3-4.0 WITH USF GRATE 6210
  - ST-28 CONST. USP 3-4.0 WITH USF GRATE 6210
  - ST-29 CONST. USP 3-4.0 WITH USF GRATE 6210
  - YD-2 CONST. ADS DRAIN BASIN 12" DIAMETER (#281246), 12" STANDARD H-20 (#1299C65)
  - YD-3 CONST. ADS DRAIN BASIN 12" DIAMETER (#281246), 12" STANDARD H-20 (#1299C65)
  - YD-4 CONST. ADS DRAIN BASIN 12" DIAMETER (#281246), 12" STANDARD H-20 (#1299C65)
  - YD-5 CONST. ADS DRAIN BASIN 12" DIAMETER (#281246), 12" STANDARD H-20 (#1299C65)
  - YD-6 CONST. ADS DRAIN BASIN 12" DIAMETER (#281246), 12" STANDARD H-20 (#1299C65)
  - YD-7 CONST. ADS DRAIN BASIN 12" DIAMETER (#281246), 12" STANDARD H-20 (#1299C65)
  - YD-8 CONST. ADS DRAIN BASIN 12" DIAMETER (#281246), 12" STANDARD H-20 (#1299C65)



LYONS ROAD

SEE SHEET C-301 FOR CONTINUATION

SINGLE FAMILY  
 RESIDENTIAL

SCHOOL

SCHOOL

1 STORY BLDG.  
 3,394 S.F.