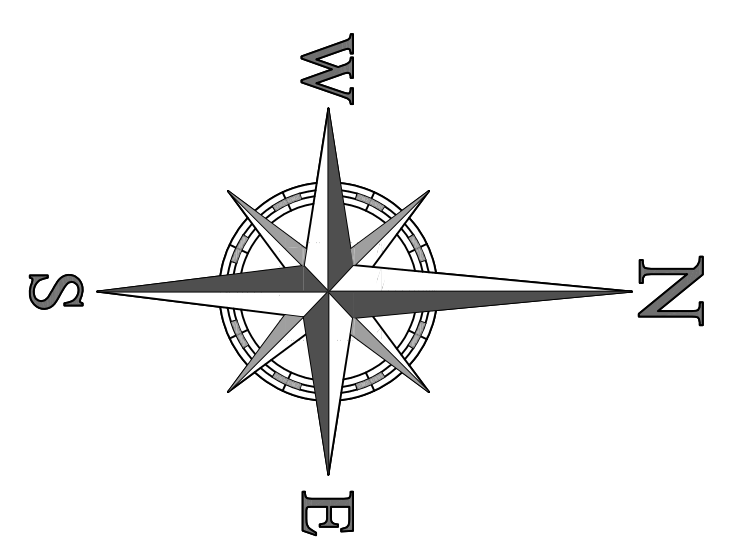
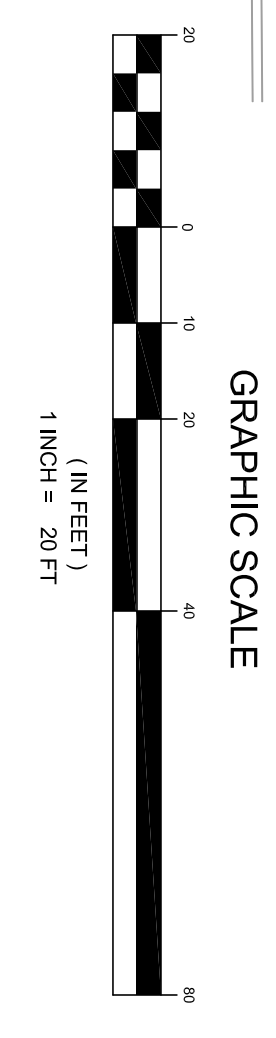


HILLSBORO BOULEVARD
 (R.O.W. VARIES)



WATER/WASTEWATER NOTES

- 1.) NO TREES OR SHRUBS SHALL BE WITHIN 4 FEET OF THE WATER METER.
- 2.) ALL WATER SERVICE MAINS SHALL BE PE TUBING MINIMUM SDR-9.
- 3.) ALL WASTEWATER SERVICE MAINS SHALL BE SDR-26 (OR BETTER).

GENERAL NOTES

- 1.) MAIN LITEROCK TO HAVE MINIMUM 7% CARBONATES AND LIQUID LIMIT 35, PLASTICITY 6, MINIMUM LBR OF 100 OR ACCEPTABLE FDOT APPROVAL.
- 2.) REMOVAL OF ORGANICS AND DELETERIOUS MATERIAL IF REQUIRED.
- 3.) ALL LITEROCK SHALL BE PRIMED AND COMPACTED TO 98% OF THE MODIFIED PROCTOR DENSITY, AASHTO T-180, AND BE INSTALLED ON A STABILIZED SUBGRADE.
- 4.) ALL SUB-GRADE SHALL MEET OR EXCEED 98% MODIFIED PROCTOR DENSITY AASHTO T-180.

NOT APPROVED FOR CONSTRUCTION

PROJECT No.: FT10027
 DRAWN BY: CMO
 DATE: 05/29/09
 SCALE: AS NOTED
 CADD: FT10027-08-UTILITIES

PROJECT:
CAJIGO CROSSING
COCONUT CREEK
LOCATION

FOR
PNC REALTY SERVICES
PNC BANK

CITY OF COCONUT CREEK
 BROWARD COUNTY, FLORIDA



1800 CORP. BLVD., SUITE 400
 FORT LAUDERDALE, FL 33354
 PH: (954) 202-7000
 FAX: (954) 202-7100
 WWW.BOHLERENGINEERING.COM

JOHN G. LAPOINTE

PROFESSIONAL ENGINEER
 FLORIDA LICENSE NO. 64211
 FLORIDA BUSINESS CERT. OF AUTH. NO. 27298

SHEET TITLE:
UTILITY PLAN

SHEET NUMBER:
C-8

sunshine state
ONE CALL
 o f f i o r i d a
 Call before you dig: 1800 432-4770

BOHLER ENGINEERING

CIVIL & CONSULTING ENGINEERS
 SURVEYORS
 PROJECT MANAGERS
 ENVIRONMENTAL CONSULTANTS
 LANDSCAPE ARCHITECTS

CORPORATE OFFICE:
 ● WARREN, NJ
 OFFICES:

- SOUTHBOROUGH, MA
- ALBANY, NY
- BIRMINGHAM, AL
- CHANFORTH, PA
- CENTER VALLEY, PA
- BOWIE, MD
- TOWSON, MD
- STERLING, VA
- WARRENTON, VA
- FORT LAUDERDALE, FL

THE INFORMATION SHOWN AND CONTENT OF THIS PLAN OR DRAWING HAS BEEN PREPARED BY THE ENGINEER OR ARCHITECT AND IS NOT TO BE USED FOR ANY PURPOSE WITHOUT FIRST CHECKING WITH ADEQUATE KNOWLEDGE FROM BOHLER ENGINEERING. IT IS AN INSTRUMENT OF SERVICE AND SHALL REMAIN THE PROPERTY OF BOHLER ENGINEERING. IT IS TO BE USED ONLY FOR THE PROJECT AND SITE SPECIFICALLY IDENTIFIED ON THE DRAWING.