

SITE #BAU033 - Coconut Creek

**Site No: BAU033**  
 State Rd 7 & Hillsboro Blvd.  
 Coconut Creek, FL 33073

**Region:**  
**Market:**  
**Line Of Business:**  
**PA:**



© 1999 - 2010 MONIGLE ASSOCIATES INC., ALL RIGHTS RESERVED - SIGNCHART IS A REGISTERED TRADEMARK.

## RECOMMENDATION REPORT

Sign #	SignType	Description	Action
IW01	IP-1	Interior Plaque Men	New
IW02	IP-2	Interior Plaque Women	New
IW03	IP-11	Interior Plaque Dual Flush	New
IW04	IP-11	Interior Plaque Dual Flush	New
IW05	IP-8	Interior Plaque Roof Access	New
IW06	IP-9	Interior Plaque Employees Only	New
IW07	IP-10	Interior Plaque Electrical Room	New
P001	Custom	Custom M-24 Monument Sign - 24 sq. ft.	New
P002	Custom	Custom M-24 Monument Sign - 24 sq. ft.	New
P003	IL-24-W	24" Illuminated White Channel Letterset (46.35 sq.ft.)	New
P004	IL-24-W	24" Illuminated White Channel Letterset (46.35 sq.ft.)	New
V001	V-2	Double Door Vinyl Lobby Hours and Drive-Up Hours	New
W001	D-3-NL	3 sq.ft. Non-Illuminated Directional Sign	New
W002	D-3-NL	3 sq.ft. Non-Illuminated Directional Sign	New
W003	RW-5	Card Swipe Message Plaque	New
W004	RW-3-NL	Non-illuminated Wall Mounted Clearance Sign (1 sq.ft.)	New
W005	RW-4	Night Deposit Message Sign	New
W006	FDIC	FDIC Decal	New
W007	FDIC	FDIC Decal	New
W008	RW-3a-NL	Non-illuminated Wall Mounted Drive Up ATM Sign (1 sq.ft.)	New
W009	CONST-1	Coming Soon Construction Sign (32 sq. ft.)	New
ATM1	3199-DU-SUR	3199 Drive-up ATM Surround	New

© 1999 - 2010 MONIGLE ASSOCIATES INC., ALL RIGHTS RESERVED - SIGNCHART IS A REGISTERED TRADEMARK.

## Existing

Sign #:	IW01
Existing Sign Type:	
Face Material:	
Construction:	
Height Above Grade:	
Face Height:	
Face Width:	
Depth:	
Illuminated:	
Electrical:	

**See Site Plan  
for Location  
of  
Proposed  
New Sign**

## Proposed

Sign Number:	IW01
Action Code:	New
Sign Type:	IP-1
Description:	Interior Plaque Men
Face Height:	7 1/2"
Face Width:	7 1/2"
Overall Height:	
Depth:	
Illuminated:	No
Electrical:	
Message A:	
Message B:	
Comments:	
Restoration Notes:	Verify copy w/ bank prior to fabrication. Fabricator to verify if secondary copy is required on sign face (i.e. legal, towing, city ordinances or code information). See control documents for product specification and master agreement for installation requirements.



IP-1 Interior Plaque  
7 1/2" x 7 1/2"

### Existing

Sign #:	IW02
Existing Sign Type:	
Face Material:	
Construction:	
Height Above Grade:	
Face Height:	
Face Width:	
Depth:	
Illuminated:	
Electrical:	

**See Site Plan  
for Location  
of  
Proposed  
New Sign**

### Proposed

Sign Number:	IW02
Action Code:	New
Sign Type:	IP-2
Description:	Interior Plaque Women
Face Height:	7 1/2"
Face Width:	7 1/2"
Overall Height:	
Depth:	
Illuminated:	No
Electrical:	
Message A:	
Message B:	
Comments:	
Restoration Notes:	Verify copy w/ bank prior to fabrication. Fabricator to verify if secondary copy is required on sign face (i.e. legal, towing, city ordinances or code information). See control documents for product specification and master agreement for installation requirements.



IR2 Interior Plaque  
7 1/2" x 7 1/2"

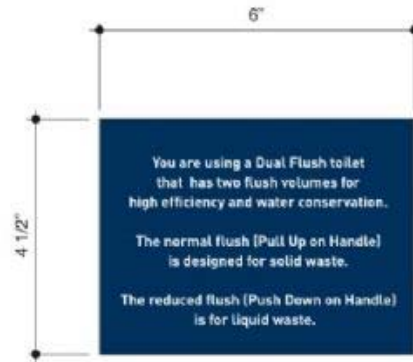
### Existing

Sign #:	IW03
Existing Sign Type:	
Face Material:	
Construction:	
Height Above Grade:	
Face Height:	
Face Width:	
Depth:	
Illuminated:	
Electrical:	

**See Site Plan  
for Location  
of  
Proposed  
New Sign**

### Proposed

Sign Number:	IW03
Action Code:	New
Sign Type:	IP-11
Description:	Interior Plaque Dual Flush
Face Height:	4 1/2"
Face Width:	6"
Overall Height:	
Depth:	
Illuminated:	No
Electrical:	
Message A:	
Message B:	
Comments:	
Restoration Notes:	Verify copy w/ bank prior to fabrication. Fabricator to verify if secondary copy is required on sign face (i.e. legal, towing, city ordinances or code information). See control documents for product specification and master agreement for installation requirements.



IP-11 Interior Plaque

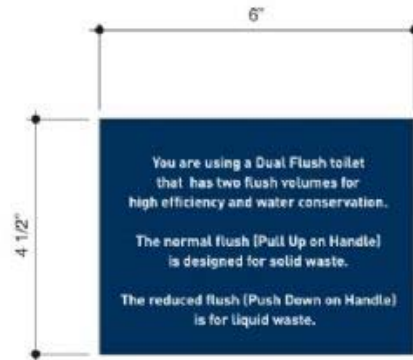
### Existing

Sign #:	IW04
Existing Sign Type:	
Face Material:	
Construction:	
Height Above Grade:	
Face Height:	
Face Width:	
Depth:	
Illuminated:	
Electrical:	

**See Site Plan  
for Location  
of  
Proposed  
New Sign**

### Proposed

Sign Number:	IW04
Action Code:	New
Sign Type:	IP-11
Description:	Interior Plaque Dual Flush
Face Height:	4 1/2"
Face Width:	6"
Overall Height:	
Depth:	
Illuminated:	No
Electrical:	
Message A:	
Message B:	
Comments:	
Restoration Notes:	Verify copy w/ bank prior to fabrication. Fabricator to verify if secondary copy is required on sign face (i.e. legal, towing, city ordinances or code information). See control documents for product specification and master agreement for installation requirements.



IP-11 Interior Plaque

### Existing

Sign #:	IW05
Existing Sign Type:	
Face Material:	
Construction:	
Height Above Grade:	
Face Height:	
Face Width:	
Depth:	
Illuminated:	
Electrical:	

**See Site Plan  
for Location  
of  
Proposed  
New Sign**

### Proposed

Sign Number:	IW05
Action Code:	New
Sign Type:	IP-8
Description:	Interior Plaque Roof Access
Face Height:	7 1/2"
Face Width:	7 1/2"
Overall Height:	
Depth:	
Illuminated:	No
Electrical:	
Message A:	
Message B:	
Comments:	
Restoration Notes:	Verify copy w/ bank prior to fabrication. Fabricator to verify if secondary copy is required on sign face (i.e. legal, towing, city ordinances or code information). See control documents for product specification and master agreement for installation requirements.



IR-B Interior Plaque  
7 1/2" x 7 1/2"

### Existing

Sign #:	IW06
Existing Sign Type:	
Face Material:	
Construction:	
Height Above Grade:	
Face Height:	
Face Width:	
Depth:	
Illuminated:	
Electrical:	

**See Site Plan  
for Location  
of  
Proposed  
New Sign**

### Proposed

Sign Number:	IW06
Action Code:	New
Sign Type:	IP-9
Description:	Interior Plaque Employees Only
Face Height:	7 1/2"
Face Width:	7 1/2"
Overall Height:	
Depth:	
Illuminated:	No
Electrical:	
Message A:	
Message B:	
Comments:	
Restoration Notes:	Verify copy w/ bank prior to fabrication. Fabricator to verify if secondary copy is required on sign face (i.e. legal, towing, city ordinances or code information). See control documents for product specification and master agreement for installation requirements.



IP-9 Interior Plaque  
7 1/2" x 7 1/2"



### Existing

Sign #:	IW07
Existing Sign Type:	
Face Material:	
Construction:	
Height Above Grade:	
Face Height:	
Face Width:	
Depth:	
Illuminated:	
Electrical:	

**See Site Plan  
for Location  
of  
Proposed  
New Sign**

### Proposed

Sign Number:	IW07
Action Code:	New
Sign Type:	IP-10
Description:	Interior Plaque Electrical Room
Face Height:	7 1/2"
Face Width:	7 1/2"
Overall Height:	
Depth:	
Illuminated:	No
Electrical:	
Message A:	
Message B:	
Comments:	
Restoration Notes:	Verify copy w/ bank prior to fabrication. Fabricator to verify if secondary copy is required on sign face (i.e. legal, towing, city ordinances or code information). See control documents for product specification and master agreement for installation requirements.



IP-10 Interior Plaque  
7 1/2" x 7 1/2"

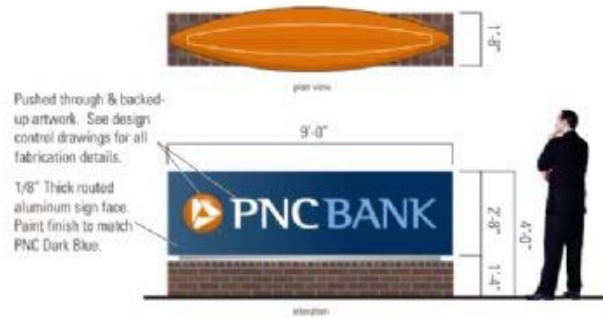
### Existing

<b>Sign #:</b>	P001
<b>Existing Sign Type:</b>	
<b>Face Material:</b>	
<b>Construction:</b>	
<b>Height Above Grade:</b>	
<b>Face Height:</b>	
<b>Face Width:</b>	
<b>Depth:</b>	
<b>Illuminated:</b>	
<b>Electrical:</b>	



### Proposed

<b>Sign Number:</b>	P001
<b>Action Code:</b>	New
<b>Sign Type:</b>	Custom
<b>Description:</b>	Custom M-24 Monument Sign - 24 sq. ft.
<b>Face Height:</b>	2'-8"
<b>Face Width:</b>	9'-0"
<b>Overall Height:</b>	4'-0"
<b>Depth:</b>	
<b>Illuminated:</b>	Yes
<b>Electrical:</b>	
<b>Message A:</b>	
<b>Message B:</b>	
<b>Comments:</b>	SPECIAL NOTE: "Proposed signage shall be consistent with the architecture of the building per Caligo Crossing PCD, page 10." >> SPECIAL NOTE: G.C. will construct brick base to match building materials and dimensions shown in photomorph.
<b>Restoration Notes:</b>	Perform utility locates and verify setbacks prior to fabrication / installation. New electrical work required. Field verify available circuits and access prior to fabrication. Restore ground material to base of new sign. See control documents for product specification and master agreement for installation requirements.



Custom M-25 Monument Sign (24 sqft)

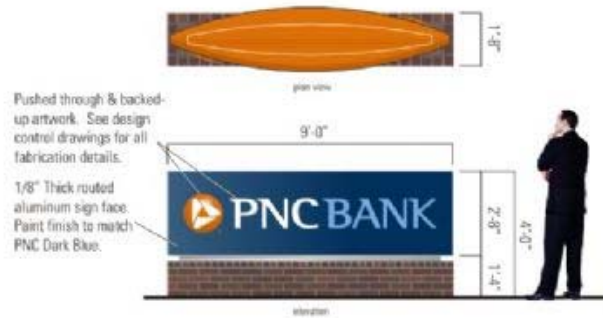
### Existing

Sign #:	P002
Existing Sign Type:	
Face Material:	
Construction:	
Height Above Grade:	
Face Height:	
Face Width:	
Depth:	
Illuminated:	
Electrical:	



### Proposed

Sign Number:	P002
Action Code:	New
Sign Type:	Custom
Description:	Custom M-24 Monument Sign - 24 sq. ft.
Face Height:	2'-8"
Face Width:	9'-0"
Overall Height:	4'-0"
Depth:	
Illuminated:	Yes
Electrical:	
Message A:	
Message B:	
Comments:	SPECIAL NOTE: "Proposed signage shall be consistent with the architecture of the building per Caligo Crossing PCD, page 10." >> SPECIAL NOTE: G.C. will construct brick base to match building materials and dimensions shown in photomorph.
Restoration Notes:	Perform utility locates and verify setbacks prior to fabrication / installation. New electrical work required. Field verify available circuits and access prior to fabrication. Restore ground material to base of new sign. See control documents for product specification and master agreement for installation requirements.



Custom M-25 Monument Sign (24 sqft)

### Existing

Sign #:	P003
Existing Sign Type:	
Face Material:	
Construction:	
Height Above Grade:	
Face Height:	
Face Width:	
Depth:	
Illuminated:	
Electrical:	



Office Side Elevation  
Prototype 2.1

### Proposed

Sign Number:	P003
Action Code:	New
Sign Type:	IL-24-W
Description:	24" Illuminated White Channel Letterset (46.35 sq.ft.)
Face Height:	2'-0"
Face Width:	17'-3 3/4"
Overall Height:	2'-8 1/8"
Depth:	
Illuminated:	Yes
Electrical:	
Message A:	
Message B:	
Comments:	>> SPECIAL NOTE: "Proposed signage shall be consistent with the architecture of the building per Caligo Crossing PCD, page 10." >> ALSO: Sec.13-458(e)(2) states that façade signs shall not exceed 75% of the storefront or sign panel. Façade sign recommendations are in compliance with this requirement.
Restoration Notes:	New electrical work required. Field verify available circuits and access prior to fabrication. Field verify dimensions of space shown in photo morph prior to fabrication to verify if specified letterset will fit in area and meet clear zone tolerances refer to Control Documents. Change letterset height if required. See control documents for product specification and master agreement for installation requirements.

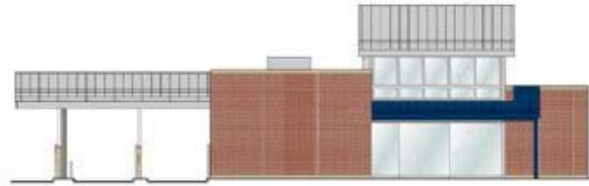


IL-24-W  
24" Illuminated White Channel Letters - 46.35 sq.ft.

Office Side Elevation  
Prototype 2.1

### Existing

Sign #:	P004
Existing Sign Type:	
Face Material:	
Construction:	
Height Above Grade:	
Face Height:	
Face Width:	
Depth:	
Illuminated:	
Electrical:	



Main Entrance Elevation  
 Prototype 2.1

### Proposed

Sign Number:	P004
Action Code:	New
Sign Type:	IL-24-W
Description:	24" Illuminated White Channel Letterset (46.35 sq.ft.)
Face Height:	2'-0"
Face Width:	17'-3 3/4"
Overall Height:	2'-8 1/8"
Depth:	
Illuminated:	Yes
Electrical:	
Message A:	
Message B:	
Comments:	>> SPECIAL NOTE: "Proposed signage shall be consistent with the architecture of the building per Caligo Crossing PCD, page 10." >> ALSO: Sec.13-458(e)(2) states that façade signs shall not exceed 75% of the storefront or sign panel. Façade sign recommendations are in compliance with this requirement.
Restoration Notes:	New electrical work required. Field verify available circuits and access prior to fabrication. Field verify dimensions of space shown in photo morph prior to fabrication to verify if specified letterset will fit in area and meet clear zone tolerances refer to Control Documents. Change letterset height if required. See control documents for product specification and master agreement for installation requirements.



IL-24-W  
 24" Illuminated White Channel Letters - 46.35 sq.ft.

Main Entrance Elevation  
 Prototype 2.1

## Existing

Sign #:	V001
Existing Sign Type:	
Face Material:	
Construction:	
Height Above Grade:	
Face Height:	
Face Width:	
Depth:	
Illuminated:	
Electrical:	



Office Side Elevation  
 Prototype 2.1

## Proposed

Sign Number:	V001
Action Code:	New
Sign Type:	V-2
Description:	Double Door Vinyl Lobby Hours and Drive-Up Hours
Face Height:	
Face Width:	
Overall Height:	
Depth:	
Illuminated:	No
Electrical:	
Message A:	
Message B:	
Comments:	>> SPECIAL NOTE: "Proposed signage shall be consistent with the architecture of the building per Caligo Crossing PCD, page 10."
Restoration Notes:	



V-2 - Door Vinyl



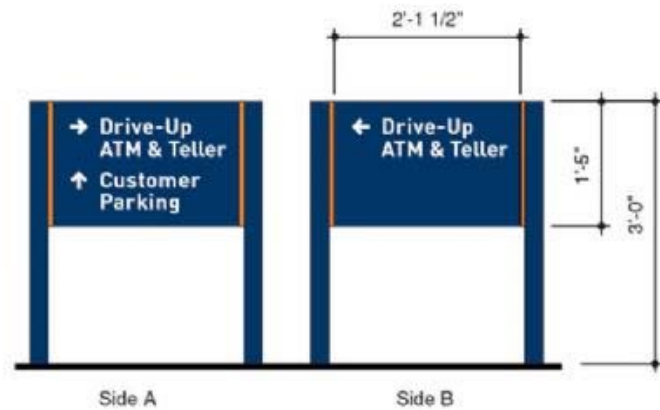
### Existing

Sign #:	W001
Existing Sign Type:	
Face Material:	
Construction:	
Height Above Grade:	
Face Height:	
Face Width:	
Depth:	
Illuminated:	
Electrical:	

**See Site Plan  
for Location  
of  
Proposed  
New Sign**

### Proposed

Sign Number:	W001
Action Code:	New
Sign Type:	D-3-NL
Description:	3 sq.ft. Non-Illuminated Directional Sign
Face Height:	1'-5"
Face Width:	2'-1 1/2"
Overall Height:	3'-0"
Depth:	
Illuminated:	No
Electrical:	
Message A:	
Message B:	
Comments:	>> SPECIAL NOTE: "Proposed signage shall be consistent with the architecture of the building per Caligo Crossing PCD, page 10."
Restoration Notes:	Perform utility locates and verify setbacks prior to fabrication / installation. Manufacturer to verify if secondary signage branding is permitted with landlord and municipalities prior to fabrication. Restore ground material to base of new sign. See control documents for product specification and master agreement for installation requirements.



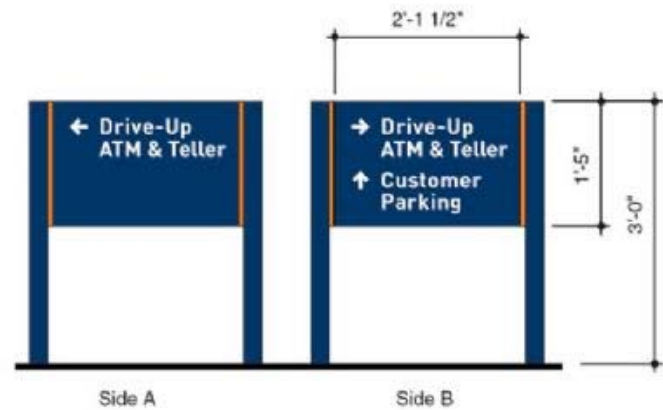
### Existing

Sign #:	W002
Existing Sign Type:	
Face Material:	
Construction:	
Height Above Grade:	
Face Height:	
Face Width:	
Depth:	
Illuminated:	
Electrical:	

**See Site Plan  
for Location  
of  
Proposed  
New Sign**

### Proposed

Sign Number:	W002
Action Code:	New
Sign Type:	D-3-NL
Description:	3 sq.ft. Non-Illuminated Directional Sign
Face Height:	1'-5"
Face Width:	2'-1 1/2"
Overall Height:	3'-0"
Depth:	
Illuminated:	No
Electrical:	
Message A:	
Message B:	
Comments:	>> SPECIAL NOTE: "Proposed signage shall be consistent with the architecture of the building per Caligo Crossing PCD, page 10."
Restoration Notes:	Perform utility locates and verify setbacks prior to fabrication / installation. Manufacturer to verify if secondary signage branding is permitted with landlord and municipalities prior to fabrication. Restore ground material to base of new sign. See control documents for product specification and master agreement for installation requirements.





### Existing

Sign #:	W003
Existing Sign Type:	
Face Material:	
Construction:	
Height Above Grade:	
Face Height:	
Face Width:	
Depth:	
Illuminated:	
Electrical:	



Office Side Elevation  
 Prototype 2.1

### Proposed

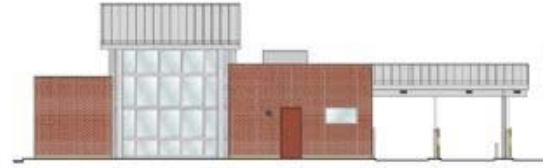
Sign Number:	W003
Action Code:	New
Sign Type:	RW-5
Description:	Card Swipe Message Plaque
Face Height:	4 1/2"
Face Width:	6"
Overall Height:	
Depth:	
Illuminated:	No
Electrical:	
Message A:	
Message B:	
Comments:	>> SPECIAL NOTE: "Proposed signage shall be consistent with the architecture of the building per Caligo Crossing PCD, page 10."
Restoration Notes:	Verify copy w/ bank prior to fabrication. Fabricator to verify if secondary copy is required on sign face (i.e. legal, towing, city ordinances or code information). See control documents for product specification and master agreement for installation requirements.



RW-5 Regulatory Sign

### Existing

Sign #:	W004
Existing Sign Type:	
Face Material:	
Construction:	
Height Above Grade:	
Face Height:	
Face Width:	
Depth:	
Illuminated:	
Electrical:	



Rear Side Elevation  
Prototype 2.1

### Proposed

Sign Number:	W004
Action Code:	New
Sign Type:	RW-3-NL
Description:	Non-illuminated Wall Mounted Clearance Sign (1 sq.ft.)
Face Height:	5"
Face Width:	2'-6"
Overall Height:	
Depth:	
Illuminated:	No
Electrical:	
Message A:	
Message B:	
Comments:	>> SPECIAL NOTE: "Proposed signage shall be consistent with the architecture of the building per Caligo Crossing PCD, page 10."
Restoration Notes:	Field verify dimensions of space shown in photo morph prior to fabrication to verify if specified sign will fit in area. Field determine clearance height w/ acceptable tolerance. See control documents for product specification and master agreement for installation requirements.



Field Determine Clearance Height

RW-3-NL Regulatory Sign

## Existing

Sign #:	W005
Existing Sign Type:	
Face Material:	
Construction:	
Height Above Grade:	
Face Height:	
Face Width:	
Depth:	
Illuminated:	
Electrical:	



Drive-Thru Side Elevation  
 Prototype 2.1

## Proposed

Sign Number:	W005
Action Code:	New
Sign Type:	RW-4
Description:	Night Deposit Message Sign
Face Height:	5 1/2"
Face Width:	8 1/2"
Overall Height:	
Depth:	
Illuminated:	No
Electrical:	
Message A:	
Message B:	
Comments:	>> SPECIAL NOTE: "Proposed signage shall be consistent with the architecture of the building per Caligo Crossing PCD, page 10."
Restoration Notes:	Verify phone number with regional PM prior to fabrication. See control documents for product specification and master agreement for installation requirements.



## Existing

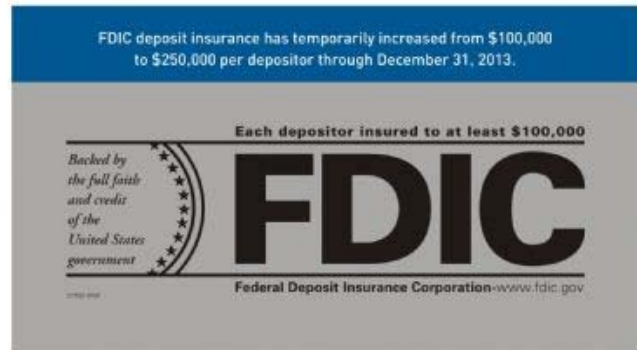
Sign #:	W006
Existing Sign Type:	
Face Material:	
Construction:	
Height Above Grade:	
Face Height:	
Face Width:	
Depth:	
Illuminated:	
Electrical:	



Drive-Thru Side Elevation  
 Prototype 2.1

## Proposed

Sign Number:	W006
Action Code:	New
Sign Type:	FDIC
Description:	FDIC Decal
Face Height:	3"
Face Width:	7"
Overall Height:	
Depth:	
Illuminated:	No
Electrical:	
Message A:	
Message B:	
Comments:	>> SPECIAL NOTE: "Proposed signage shall be consistent with the architecture of the building per Caligo Crossing PCD, page 10."
Restoration Notes:	See control documents for product specification and master agreement for installation requirements.



## Existing

Sign #:	W007
Existing Sign Type:	
Face Material:	
Construction:	
Height Above Grade:	
Face Height:	
Face Width:	
Depth:	
Illuminated:	
Electrical:	



Drive-Thru Side Elevation  
 Prototype 2.1

## Proposed

Sign Number:	W007
Action Code:	New
Sign Type:	FDIC
Description:	FDIC Decal
Face Height:	3"
Face Width:	7"
Overall Height:	
Depth:	
Illuminated:	No
Electrical:	
Message A:	
Message B:	
Comments:	>> SPECIAL NOTE: "Proposed signage shall be consistent with the architecture of the building per Caligo Crossing PCD, page 10."
Restoration Notes:	See control documents for product specification and master agreement for installation requirements.



## Existing

<b>Sign #:</b>	W008
<b>Existing Sign Type:</b>	
<b>Face Material:</b>	
<b>Construction:</b>	
<b>Height Above Grade:</b>	
<b>Face Height:</b>	
<b>Face Width:</b>	
<b>Depth:</b>	
<b>Illuminated:</b>	
<b>Electrical:</b>	



**Rear Side Elevation**  
 Prototype 2.1

## Proposed

<b>Sign Number:</b>	W008
<b>Action Code:</b>	New
<b>Sign Type:</b>	RW-3a-NL
<b>Description:</b>	Non-illuminated Wall Mounted Drive Up ATM Sign (1 sq.ft.)
<b>Face Height:</b>	5"
<b>Face Width:</b>	2'-6"
<b>Overall Height:</b>	1'-8 1/8"
<b>Depth:</b>	
<b>Illuminated:</b>	No
<b>Electrical:</b>	
<b>Message A:</b>	
<b>Message B:</b>	
<b>Comments:</b>	Mount over lane 1. >> SPECIAL NOTE: "Proposed signage shall be consistent with the architecture of the building per Caligo Crossing PCD, page 10."
<b>Restoration Notes:</b>	Verify copy w/ bank prior to fabrication. Fabricator to verify if secondary copy is required on sign face (i.e. legal, towing, city ordinances or code information). See control documents for product specification and master agreement for installation requirements.



### Existing

<b>Sign #:</b>	W009
<b>Existing Sign Type:</b>	
<b>Face Material:</b>	
<b>Construction:</b>	
<b>Height Above Grade:</b>	
<b>Face Height:</b>	
<b>Face Width:</b>	
<b>Depth:</b>	
<b>Illuminated:</b>	
<b>Electrical:</b>	



### Proposed

<b>Sign Number:</b>	W009
<b>Action Code:</b>	New
<b>Sign Type:</b>	CONST-1
<b>Description:</b>	Coming Soon Construction Sign (32 sq. ft.)
<b>Face Height:</b>	4'-0"
<b>Face Width:</b>	8'-0"
<b>Overall Height:</b>	8'-0"
<b>Depth:</b>	
<b>Illuminated:</b>	No
<b>Electrical:</b>	
<b>Message A:</b>	
<b>Message B:</b>	
<b>Comments:</b>	See site plan to confirm sign location.
<b>Restoration Notes:</b>	



### Existing

<b>ATM No:</b>	ATM1
<b>Terminal No:</b>	
<b>Maker:</b>	
<b>Model Type:</b>	
<b>ATM Access:</b>	
<b>Premise:</b>	
<b>ATM Environment:</b>	
<b>Power Connection:</b>	
<b>Face Height:</b>	
<b>Face Width:</b>	
<b>Illuminated:</b>	



**Drive-Thru Side Elevation**  
 Prototype 2.1

### Proposed

<b>ATM No:</b>	ATM1
<b>Terminal No:</b>	
<b>Sign Type:</b>	3199-DU-SUR
<b>Action Code:</b>	New
<b>Description:</b>	3199 Drive-up ATM Surround
<b>Comments:</b>	>> SPECIAL NOTE: "Proposed signage shall be consistent with the architecture of the building per Caligo Crossing PCD, page 10."
<b>Restoration Notes:</b>	New electrical work required. Field verify available circuits and access prior to fabrication. Field verify that recommended ATM Surround and/or accessories will fit in space provided.
<b>Approx size of trim panel area:</b>	
<b>Face Height:</b>	78"
<b>Face Width:</b>	67"
<b>Illuminated:</b>	Yes



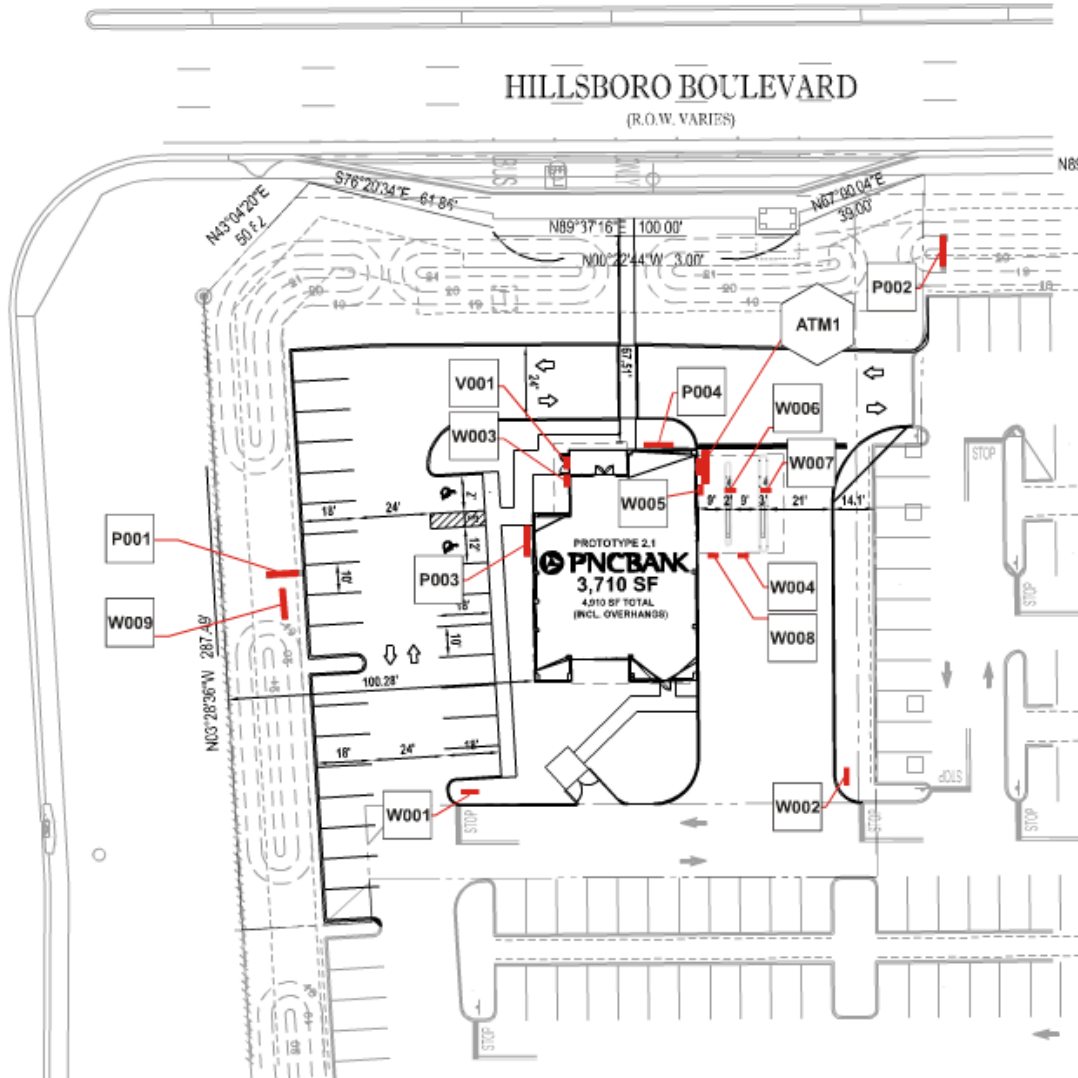


**SITE PLANS**  
Exterior Plan

Site Number: **BAU033**

**Coconut Creek**  
State Rd 7 & Hillsboro Blvd.  
Coconut Creek, FL 33073

STATE ROAD 7 (US 441)  
(200' R.O.W.)



FIELD NOTES

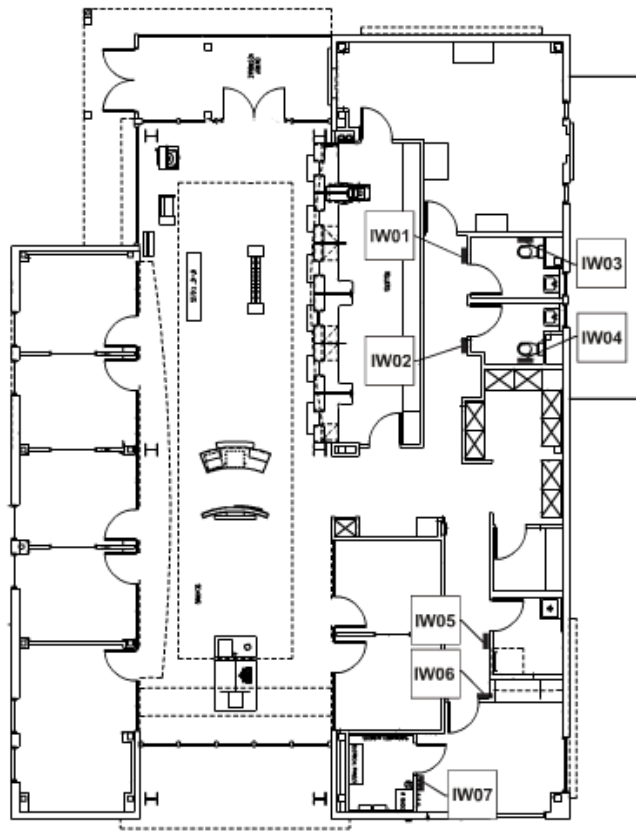
© 1999 - MONIGLE ASSOCIATES INC., ALL RIGHTS RESERVED - SIGNCHART IS A REGISTERED TRADEMARK.

# SITE PLANS

Interior Plan

Site Number: BAU033

Coconut Creek  
State Rd 7 & Hillsboro Blvd.  
Coconut Creek, FL 33073



FIELD NOTES

© 1999 - MONIGLE ASSOCIATES INC., ALL RIGHTS RESERVED - SIGNCHART IS A REGISTERED TRADEMARK.

### SURVEY PHOTOS



05/28/2010 01



05/28/2010 02



05/28/2010 03



05/28/2010 04



05/28/2010 06

© 1999 - 2010 MONIGLE ASSOCIATES INC., ALL RIGHTS RESERVED - SIGNCHART IS A REGISTERED TRADEMARK.

## CODES

### 1. SQUARE FOOTAGE RESTRICTION (SF)

- A) Zoning Classification For Property:
- B) Pylon:
- C) Wall - Allowable Square Footage Front of Building:
- D) Wall - Allowable Square Footage Back and Sides of Building:
- E) Directionals:
- F) Total Signage:

### 3. ESTIMATED PERMIT COSTS

- A) Approx. Permit Fees if available:
- B) Approx. Variance Fees if available:
- C) Special Fees:

### 5. GENERAL INFORMATION

- A) Municipality Contact:
- B) County of:
- C) City of:
- D) Telephone:
- E) Web Address:
- F) Date of last code change:
- G) Municipality Address:
- H) Municipality City, State, Zip:

### 7. SPECIFIC MUNICIPALITY REQUIREMENTS

- A) Special Codes Defining Allowable Signs, Materials, Colors,

### 2. PERMIT DRAWINGS REQUIRED

- A) Number of Copies Required:
- B) Plot Plans:
- C) Bldg Elevations:
- D) Stamped Engineering Prints:
- E) Architect / Professional Seals:

### 4. REQUIREMENTS FOR PERMITTING

- A) Permit By Mail:
- B) Business License Required:
- C) Contractor License Required:
- D) As Authorized Agent:
- E) Permit By Mail:
- F) Business License Required:
- G) Contractor License Required:
- H) As Authorized Agent:

### 6. TEMPORARY BANNERS

- A) Are Temporary Banners Allowed?:
- B) Permit Required:
- C) Permit Timing:
- D) Allowable Square Footage:
- E) Maximum Mounting Height:
- F) Location Restrictions:
- G) Materials Restrictions:
- H) Allowable Display Duration:
- I) Required Periods Between Display Duration:
- J) Additional Temporary Banner Comments:

### 8. NOTES

- A) Notes:

etc.:

**9. HEIGHT RESTRICTION (FT)**

- A) Overall Max Pylon:
- B) Overall Min Pylon:
- C) Overall Max Wall Sign:
- D) Overall Max Directional:

**11. PROJECTION LIMITS (FT)**

- A) Over Public Property:
- B) Over Sidewalk:

**13. REMODEL AND FACE REPLACEMENT**

- A) Face Replacements - Permit Rquired.:
- B) Remodel or Painting of Cabinet - Permit Rquired.:

**15. PERMIT SECONDARY SIGNAGE**

- A) Plaques:
- B) Vinyl Door/Window Letters:
- C) Directionals:
- D) Branded Directionals Allowed?:
- E) Non-Illum Building Letters:
- F) ATM Surround:

**10. QUANTITY RESTRICTIONS**

- A) Max Pylons:
- B) Max Wall Signs:
- C) Max Directionals:

**12. ILLUMINATION LIMITS (FT)**

- A) Pylon Max Lumen Output:
- B) Wall Sign Max Lumen Output:
- C) Directional Internal Illumination Allowed? Lumen Output?:

**14. PYLON SPECIFIC DATA-SETBACK FORM (FT)**

- A) Front Property Line:
- B) Side Property Line:
- C) Street Curb:
- D) Right of Way:
- E) Sidewalk:
- F) Sign Grandfathered?:

**16. PERMIT TIMING (DAYS)**

- A) Permit Processing:
- B) Additional Review Processes Required? List::
- C) Variance Timing:
- D) Architectural/Historical Review:
- E) Zoning District:

© 1999 - 2010 MONIGLE ASSOCIATES INC., ALL RIGHTS RESERVED - SIGNCHART IS A REGISTERED TRADEMARK.

## SignChart and Recommendation Book Legal Disclaimer

Certain information and Content in SignChart is prepared as the result of a Design Services Agreement between Monigle Associates and their clients. The information and Content are part of an original and unpublished design by Monigle Associates. The concepts, detailing, and information shall not be reproduced, copied, or utilized except for the specific project and client for which they were created, without previous authorization from Monigle Associates and their clients. The information is for design intent only and shall be used only as a guide to produce the finished sizes, appearances, and functions. Nothing contained within the information or Content provided by Monigle Associates shall be construed as a design for any engineered element. The Sign Vendor shall be responsible for all structural, electrical, mechanical, and foundation engineering to meet or exceed all local, state, national or other applicable codes. The information, Content and support documentation was not produced under an architectural services agreement. Sign Vendor is to perform a technical audit of all site conditions to ensure that the sign or element being proposed can be permitted, approved by the landlord if applicable and will work/fit in the intended location. Sign Vendor is to verify all dimensions, fit, electrical, servicing, mounting conditions, codes and any other necessary requirements prior to sign or element fabrication.

© 1999 - 2010 MONIGLE ASSOCIATES INC., ALL RIGHTS RESERVED - SIGNCHART IS A REGISTERED TRADEMARK.