

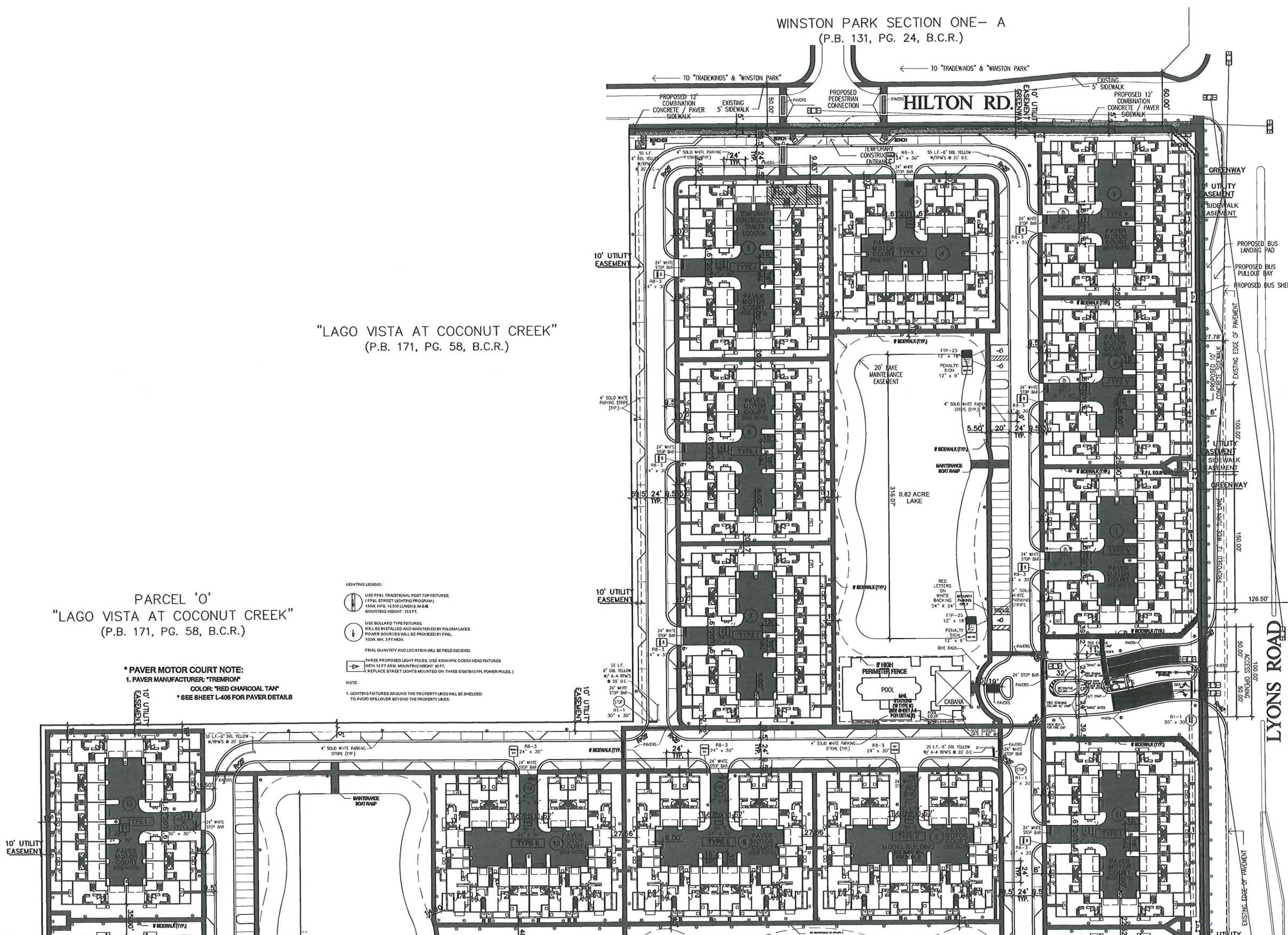
WINSTON PARK SECTION ONE- A
(P.B. 131, PG. 24, B.C.R.)

"LAGO VISTA AT COCONUT CREEK"
(P.B. 171, PG. 58, B.C.R.)

PARCEL 'O'
"LAGO VISTA AT COCONUT CREEK"
(P.B. 171, PG. 58, B.C.R.)

* PAVER MOTOR COURT NOTE:
1. PAVER MANUFACTURER: "TREMOR"
COLOR: "RED CHARCOAL TAN"
* SEE SHEET L-408 FOR PAVER DETAILS

- LIGHTING LEGEND:**
- USE FPL TRADITIONAL POST TOP FIXTURES.
 - FPL STREET LIGHTING PROGRAMS: 150W, HPS, 15,000 LUMENS, M-58, MOUNTING HEIGHT: 15.5 FT.
 - USE BOLLARD TYPE FIXTURES, WILL BE INSTALLED AND MAINTAINED BY PALOMA LAKES. POWER SOURCES WILL BE PROVIDED BY FPL, 100W, MA, 3 FT HDA.
 - FINAL QUANTITY AND LOCATION WILL BE FIELD DECIDED.
 - THREE PROPOSED LIGHT POLES, USE 400W HPL COBRA HEAD FIXTURES WITH 12 FT ARM, MOUNTING HEIGHT: 40 FT.
 - REPLACE STREET LIGHTS MOUNTED ON THREE EXISTING FPL POWER POLES.
- NOTE:**
1. LIGHTING FIXTURES AROUND THE PROPERTY LINES WILL BE SHIELDED TO AVOID SPILLOVER BEYOND THE PROPERTY LINES.



4102 LAGUNA STREET
CORAL GABLES, FL 33146
LIC. NO. AA-C002151 TEL: (305) 448-7383

PROJECT NAME:
PALOMA LAKES
RESIDENTIAL
COMMUNITY
CITY OF COCONUT CREEK, FL

OWNER:
LENNAR HOMES
MIAMI DADE COUNTY
FLORIDA

CONSULTANTS:

PHASE

PERMIT SET

REVISIONS

SEAL

THIS DRAWING IS THE PROPERTY OF CORWIL ARCHITECTS INC. UNLESS OTHERWISE PROVIDED FOR BY CONTRACT, THE CONTENTS OF THIS DRAWING ARE CONFIDENTIAL AND SHALL NOT BE TRANSMITTED TO ANY OTHER PARTY EXCEPT AS AGREED TO BY THE ARCHITECT/ENGINEERS.

SHEET TITLE

**SITE PLAN
BUILDING 12
(TYPE 1)**

DATE: 04-14-2010

JOB NO. 2009-13

DRAWN BY AO

APPR BY AMC

FILE 2009-13

SHEET NO.