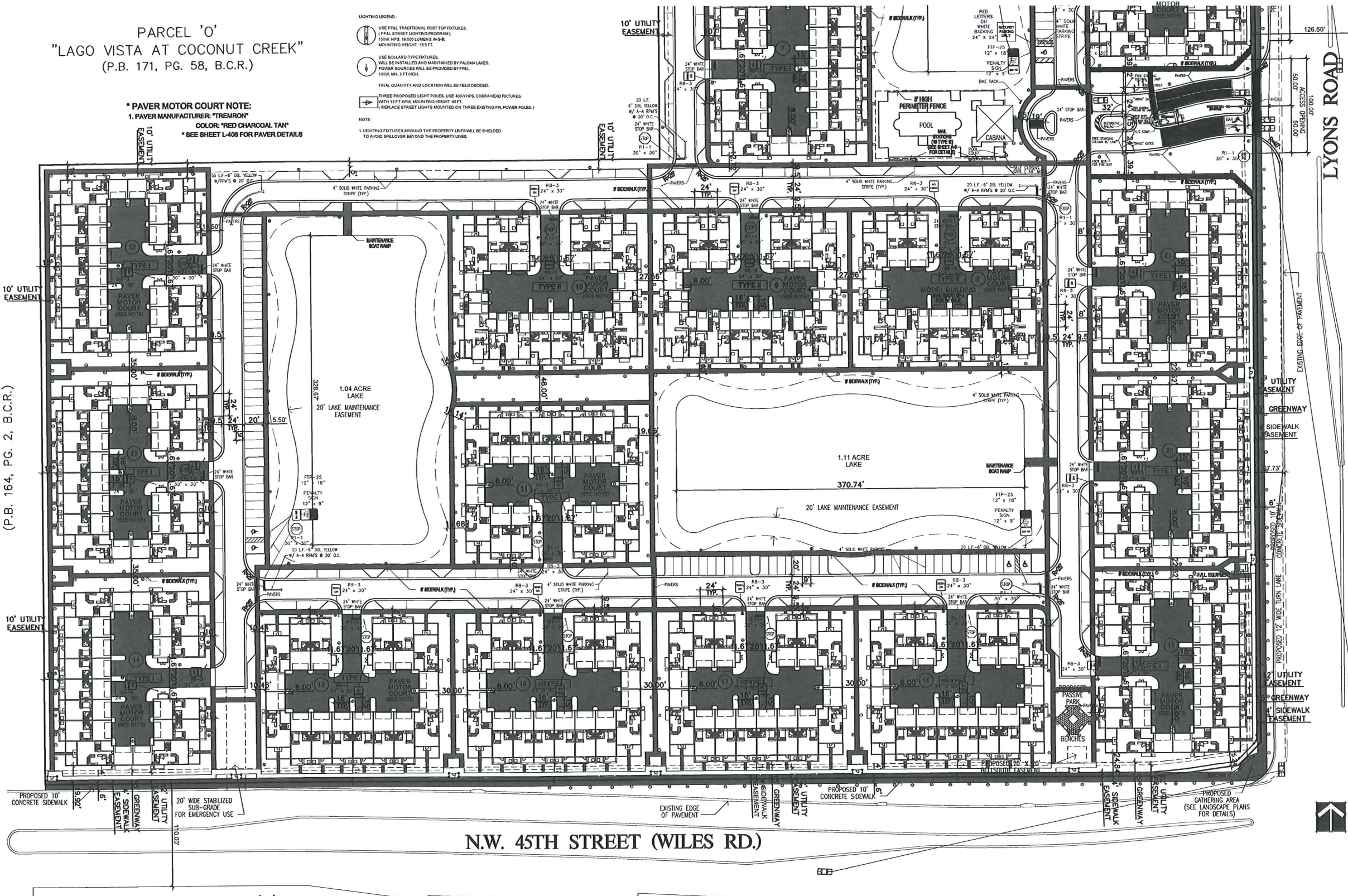


PARCEL 'O'
 "LAGO VISTA AT COCONUT CREEK"
 (P.B. 171, PG. 58, B.C.R.)

*PAVER MOTOR COURT NOTE:
 1. PAVER MANUFACTURER- "TREMOR"
 COLOR- "RED CHARCOAL TAN"
 *SEE SHEET L-408 FOR PAVER DETAILS

LIGHTING LEGEND:
 USE FFAL TRADITIONAL POST TOP FIXTURES.
 (FFAL STREET LIGHTING PROGRAM).
 120W. WIDE 18.00 LUMENS IN AIR.
 MOUNTING HBSHT: 18.5 FT.
 USE ROLLAD TYPE FIXTURES.
 WALL BE INSTALLED AND MAINTAINED BY PALOMA LAKES.
 POWER SOURCES WILL BE PROVIDED BY FFAL.
 120W. MH. 3 FT HIGH.
 FINAL QUANTITY AND LOCATION WILL BE FIELD DECIDED.
 THREE PROPOSED LIGHT POLES USE KODIVIPS COBRA HEAD FIXTURES
 WITH 12 FT ARM MOUNTING HEIGHT: 40 FT.
 REPLACE STREET LIGHTS MOUNTED ON THREE EXISTING FPL POWER POLES.
 NOTE:
 1. LIGHTING FIXTURES AROUND THE PROPERTY LINES WILL BE SHIELDED
 TO AVOID SPILLOVER BEYOND THE PROPERTY LINES.

PARCEL 'A'
 "EVERGREEN LAKES"
 (P.B. 164, PG. 2, B.C.R.)



N.W. 45TH STREET (WILES RD.)

PARCEL 'A'
 HIGH SCHOOL "GGG"
 SITE 354.1
 (P.B. 170, PG. 99, B.C.R.)

PARCEL "A"
 GREEN FARM PLAT
 (P.B. 163, PG. 27, B.C.R.)



4102 LAGUNA STREET
 CORAL GABLES, FL 33146
 LIC. NO. AA-C002151 TEL: (305)-419-7383

PROJECT NAME:
 PALOMA LAKES
 RESIDENTIAL
 COMMUNITY
 CITY OF COCONUT CREEK, FL

OWNER:
 LENNAR
 HOMES
 MIAMI DADE COUNTY
 FLORIDA

CONSULTANTS:

PHASE PERMIT SET

REVISIONS

SEAL

THIS DRAWING IS THE PROPERTY OF
 CORWIL ARCHITECTS INC. UNLESS
 OTHERWISE PROVIDED FOR BY
 CONTRACT. THE CONTENTS OF THIS
 DRAWING ARE CONFIDENTIAL AND
 SHALL NOT BE TRANSMITTED TO ANY
 OTHER PARTY EXCEPT AS AGREED
 TO BY THE ARCHITECTS/ENGINEERS.

SHEET TITLE
 SITE PLAN
 BUILDING 12
 (TYPE 1)

DATE: 04-14-2010
 JOB NO. 2009-13
 DRAWN BY AO
 APPR BY AMC
 FILE 2009-13
 SHEET NO. SP-3