



4102 LAGUNA STREET  
CORAL GABLES, FL 33146  
LIC. NO. AA-C002151 TEL: (305) 448-7383

PROJECT NAME:  
PALOMA LAKES  
RESIDENTIAL  
COMMUNITY  
CITY OF COCONUT CREEK, FL

OWNER:  
LENNAR  
HOMES  
MIAMI DADE COUNTY  
FLORIDA

CONSULTANTS:

**KEYNOTES**

1. CEMENT TILE
2. LIGHT TEXTURED DECORATIVE ARCHITECTURAL FINISH
3. 2X8 OR 2X6 STRUCTURAL GRADE (PAINTED) WOOD FASCIA
4. DECORATIVE SHUTTERS ATTACHED TO WALL
5. ALUMINUM COLUMN (SEE DETAIL 1/A-6)
6. BRACKET (SEE DET. 4/7 A-8)
7. ALUMINUM RAILING WITH PICKETS TO RESIST A 4" OBJECT AND TO WITHSTAND THE FORCES IN 1608.2 OF F.B.C. 2001
8. 42" HIGH WALL
9. BLACK ALUMINUM LIGHT FIXTURE (WALL MOUNTED BOIT @ 8'-5")
10. GATE
11. ADDRESS SIGN:  
TOP OF EVERY ENTRY TO BE MOUNTED @ 5'-6", W/ BLACK NUMBERS (HGT. 3" MIN / 6" MAX.)
- 12/13. 4" x 4" SMOOTH RAISED DECORATIVE ARCHITECTURAL FINISH BAND
14. STYROFOAM OUTDOORS (SEE DET. 6/ A-6)
15. DECORATIVE VENT, NON FUNCTIONAL (SEE PROFILE A/A-5)
16. 1 1/2" x 4" SMOOTH RAISED DECORATIVE ARCHITECTURAL FINISH BAND
17. DECORATIVE ARCHITECTURAL FINISH COVERED STYROFOAM MOLDING (SEE PROFILE C/ A-5)
18. DECORATIVE ARCHITECTURAL FINISH COVERED STYROFOAM MOLDING (SEE PROFILE B/ A-5)
19. DECORATIVE ARCHITECTURAL FINISH COVERED STYROFOAM MOLDING (SEE PROFILE E/ A-5)
20. 1/2" x 4" RAISED SMOOTH DECORATIVE ARCHITECTURAL FINISH BAND
21. N/A
22. LINE OF BOND BEAM
23. LINE OF CONC. BEAM
24. PRECAST. CONC. LINTEL
25. LINE OF SECOND FINISH FLOOR
26. LINE OF FINISH FLOOR
27. 1" MIN. DECORATIVE ARCHITECTURAL FINISH ON FELT BACKED METAL LATH ON 1/2" FLYWOOD COG. SHEATHING ON END TRUSS OR 2X 10 @ 16" O.C.
28. DECORATIVE ARCHITECTURAL FINISH COVERED STYROFOAM BRACKET (SEE DET. 6/ A-5)
29. ESDA ALUMINUM OUTLERS AND DOWNSPOUTS

**COLOR SCHEME CHARTS**

NOTE: EACH BUILDING WILL HAVE ONE OF THE FOLLOWING COLOR SCHEMES PROVIDED BY SHERWIN WILLIAMS PALETTES.

**SCHEME 1**

MAIN BODY: CREMEL TAN 0011 S.W.  
ENTRY DOOR, GARAGE DOOR AND SHUTTERS: ROYCOFROT COPPER RED 2839 S.W.  
FASCIAS, BANDS, COLUMNS, DECOR. ARCH. FINISH TRIMS & SIDING: PURE WHITE 7005 S.W.  
ROOF: (MONER - FLAT TILE) FLORIDA BLEND  
RAILINGS: BLACK FINISH

**SCHEME 2**

MAIN BODY: COLONIAL REVIVAL GREEN STONE 2826 S.W.  
ENTRY DOOR, GARAGE DOOR AND SHUTTERS: ROYCOFROT COPPER RED 2839 S.W.  
FASCIAS, BANDS, COLUMNS, DECOR. ARCH. FINISH TRIMS & SIDING: PURE WHITE 7005 S.W.  
ROOF: (MONER - FLAT TILE) FLORIDA BLEND  
RAILINGS: BLACK FINISH

**SCHEME 3**

MAIN BODY: COMPATIBLE CREAM 6387 S.W.  
ENTRY DOOR, GARAGE DOOR AND SHUTTERS: ROYCOFROT COPPER RED 2839 S.W.  
FASCIAS, BANDS, COLUMNS, DECOR. ARCH. FINISH TRIMS & SIDING: PURE WHITE 7005 S.W.  
ROOF: (MONER - FLAT TILE) FLORIDA BLEND  
RAILINGS: BLACK FINISH

**SCHEME 4**

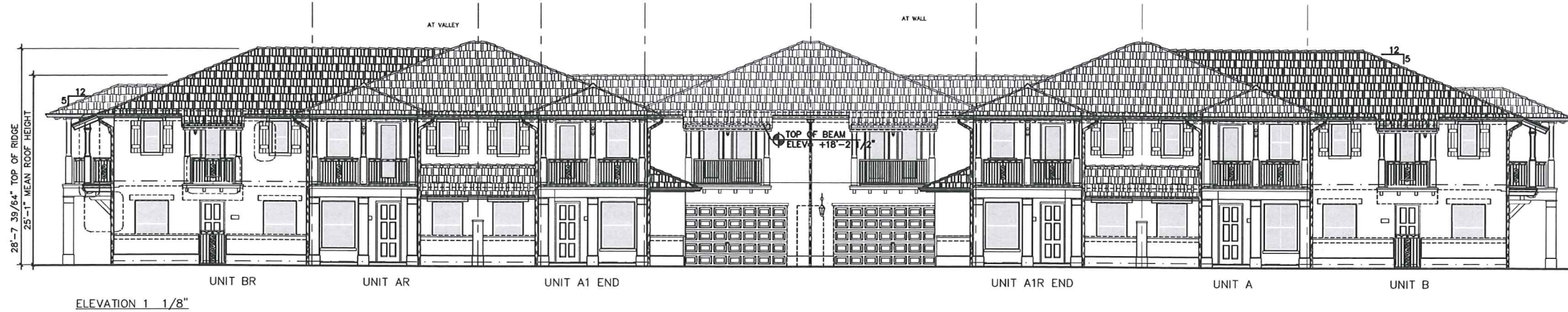
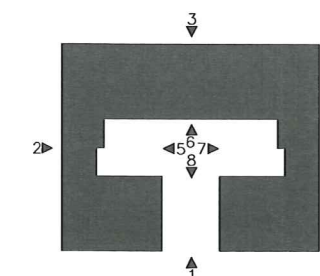
MAIN BODY: ROYCOFROT SUEDE 31X 2842 S.W.  
ENTRY DOOR, GARAGE DOOR AND SHUTTERS: ROYCOFROT COPPER RED 2839 S.W.  
FASCIAS, BANDS, COLUMNS, DECOR. ARCH. FINISH TRIMS & SIDING: PURE WHITE 7005 S.W.  
ROOF: (MONER - FLAT TILE) FLORIDA BLEND  
RAILINGS: BLACK FINISH

1. ALL MOLDINGS SHOWN TO BE DECORATIVE ARCHITECTURAL FINISH (CONSIDER AS PER WALL FINISH SPECIFICATIONS)
2. CARRY MOLDING AND/OR WALL FINISHES ON FRONTS, BACKS, UNDERSIDES & TOPS OF ALL CRENCES
3. RETURN ALL MOLDINGS, BANDS, & FINISHES
4. MANUFACTURER TO SUBMIT SHOP DRAWINGS TO BUILDER FOR REVIEW PRIOR TO CONSTRUCTION FOR ALL RAILINGS, MOLDINGS, SHUTTERS, VENTS, MEDALLIONS, & APPLIED DECORATIVE ELEMENTS

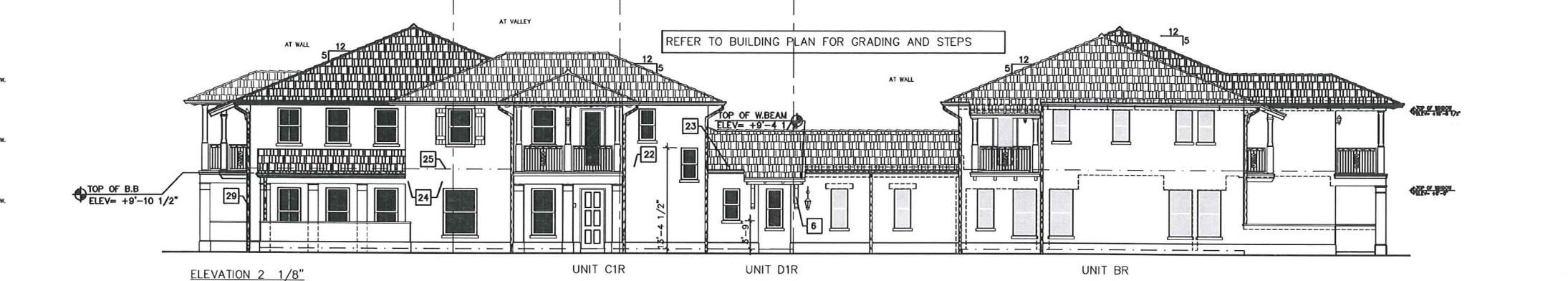
NOTE:  
PROVIDE MIN. 4" CLEARANCE AROUND WINDOWS TO ALL ADVANCED SHUTTERS AND MOLDINGS TO ALLOW FOR SHUTTER INSTALLATION. REFER TO ELEVATIONS FOR MOLDING SHAPES & SIZES. CONTRACTOR TO COORDINATE W/ SHUTTER MFG.



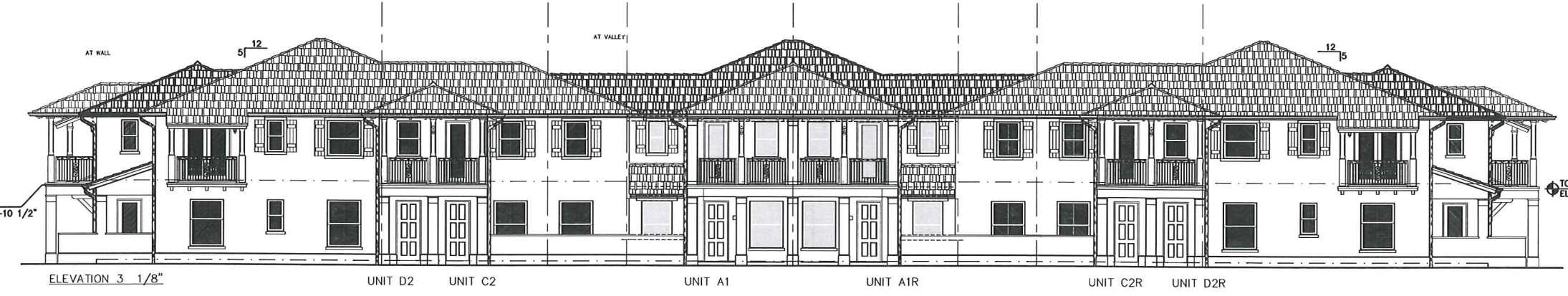
LOW WALL MOVED FOR ACCESSIBLE ROUTE IN BLDGS-4, 7, 8



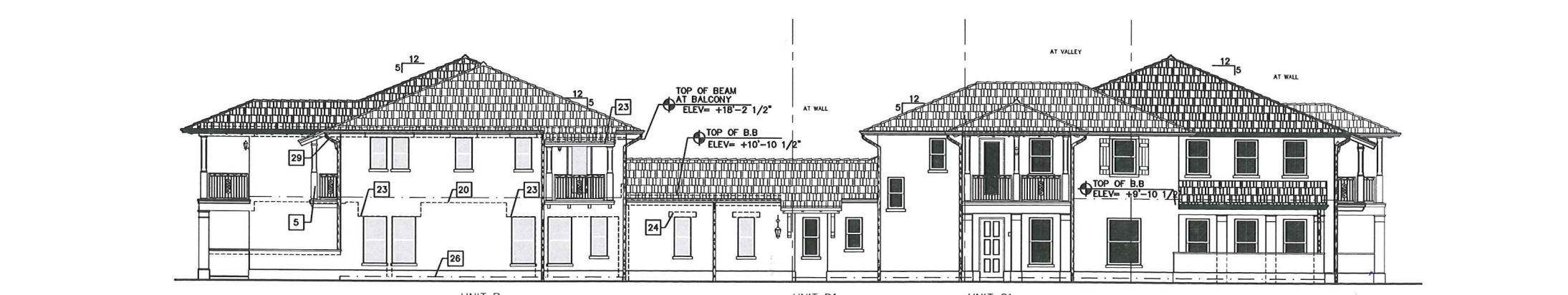
ELEVATION 1 1/8"



ELEVATION 2 1/8"



ELEVATION 3 1/8"



ELEVATION 4 1/8"

PHASE

PERMIT SET

REVISIONS


SEAL

THIS DRAWING IS THE PROPERTY OF CORWIL ARCHITECTS INC. UNLESS OTHERWISE PROVIDED FOR BY CONTRACT, THE CONTENTS OF THIS DRAWING ARE CONFIDENTIAL AND SHALL NOT BE TRANSMITTED TO ANY OTHER PARTY EXCEPT AS AGREED TO BY THE ARCHITECT/ENGINEERS.

SHEET TITLE

ELEVATIONS (TYPE II)

DATE: 04-14-2010

JOB NO. 2009-13

DRAWN BY AO

APPR BY AMC

FILE 2009-13

SHEET NO. A-5.0