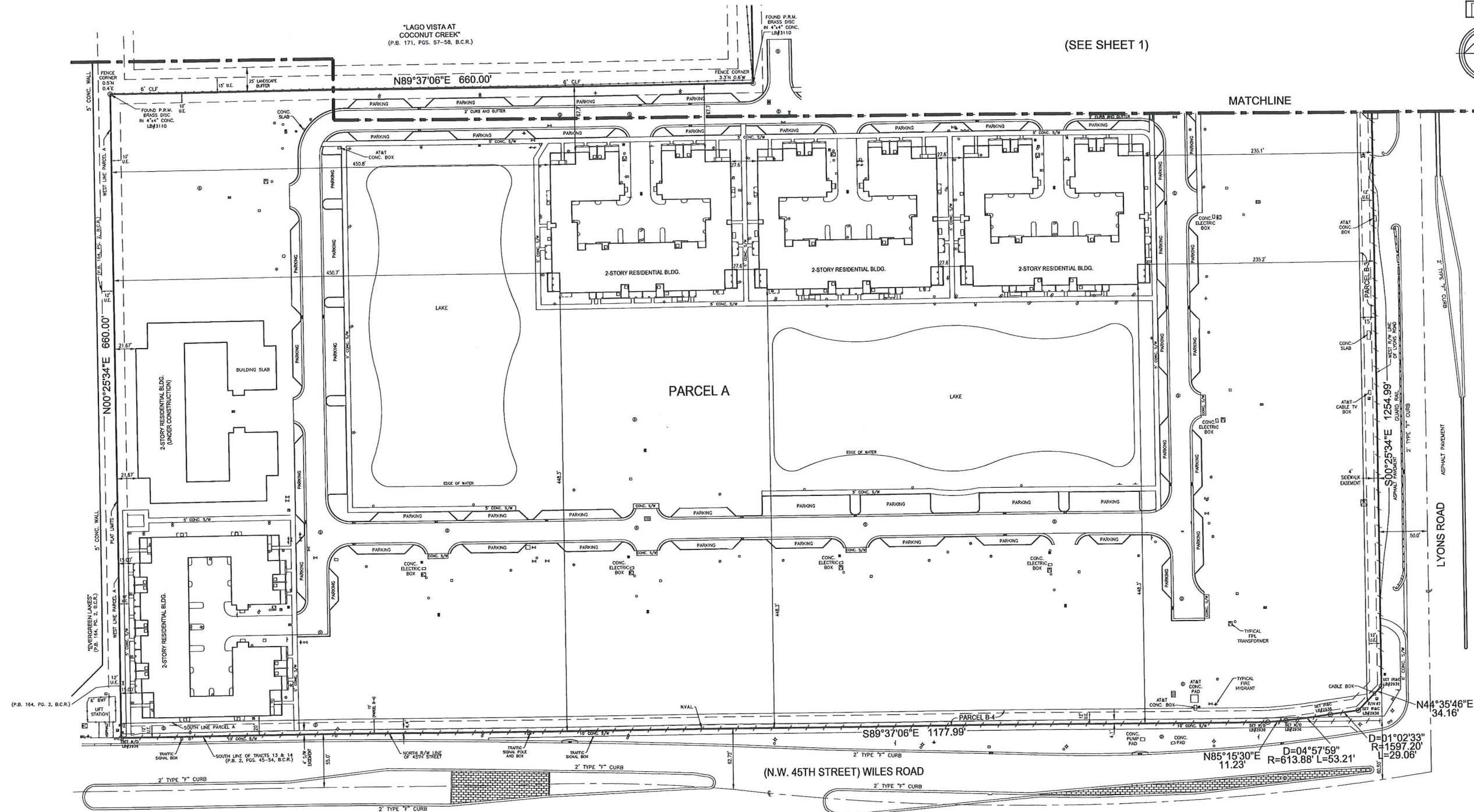




(SEE SHEET 1)



- ABBREVIATIONS:**
- B.C.R. = BROWARD COUNTY RECORDS
  - BWF = BARBED WIRE FENCE
  - C.L.F. = CHAIN LINK FENCE
  - CONC. = CONCRETE
  - D = DELTA
  - F.D.O.T. = FLORIDA DEPARTMENT OF TRANSPORTATION
  - I.R.&C. = IRON ROD AND CAP
  - L = LENGTH
  - M.B. = MAP BOOK
  - N/D = NAIL AND DISC
  - N.T.S. = NOT TO SCALE
  - NVAL = NON VEHICULAR ACCESS LINE
  - O.R.B. = OFFICIAL RECORDS BOOK
  - P.B. = PLAT BOOK
  - P.B.C.R. = PALM BEACH COUNTY RECORDS
  - P.C. = PAGE (S)
  - PRM = PERMANENT REFERENCE MONUMENT
  - R = RADIUS
  - R/W = RIGHT-OF-WAY
  - S/W = SIDEWALK
  - U.E. = UTILITY EASEMENT

- LEGEND:**
- CATCH BASIN
  - CABLE JUNCTION BOX
  - CENTERLINE
  - CLEANOUT
  - ELECTRIC SERVICE
  - FIRE HYDRANT
  - FENCE, CHAIN LINK
  - FENCE, METAL
  - FPL (ELECTRIC) PAD
  - MANHOLE, DRAINAGE
  - MANHOLE, SANITARY
  - POLE, CONC.
  - POLE, METAL
  - SIGN
  - TELEPHONE, JUNCTION BOX
  - WATER METER
  - VALVE
  - YARD DRAIN
  - PERMANENT REFERENCE MONUMENT
  - BACKFLOW PREVENTER

LAST DATE OF FIELD WORK: DECEMBER 14, 2009

**SURVEYOR'S CERTIFICATION:**

I HEREBY CERTIFY THAT THE SURVEY SHOWN HEREON COMPLIES WITH MINIMUM TECHNICAL STANDARDS FOR SURVEYS AS CONTAINED IN CHAPTER 61G17-6, FLORIDA ADMINISTRATIVE CODE, PURSUANT TO SECTION 472.007, FLORIDA STATUTES, AND THAT SAID SURVEY IS TRUE AND CORRECT TO THE BEST OF MY KNOWLEDGE AND BELIEF.

*Scott A. Partle*  
SCOTT A. PARTLE  
PROFESSIONAL SURVEYOR AND MAPPER  
FLORIDA REGISTRATION NO. 155630

| NO. | DATE | BY | CKD | REVISIONS |
|-----|------|----|-----|-----------|
|     |      |    |     |           |
|     |      |    |     |           |
|     |      |    |     |           |
|     |      |    |     |           |

SCALE: 1" = 50'  
 DATE: 12-07-09  
 DRAWN BY: GTW  
 CHECKED BY: SMP  
 FBPG: FILE AND TDS  
 SURVEY TYPE:  
 BOUNDARY SURVEY

 **CARNAHAN · PROCTOR · CROSS, INC.**  
 CONSULTING ENGINEERS · SURVEYORS · PLANNERS  
 6101 W. ATLANTIC BLVD., SUITE 201, MARGATE, FL 33063  
 PHONE: 954-972-3959 FAX: 954-972-4178 WEBSITE: www.carnahan-proctor.com

**BOUNDARY SURVEY**  
**PALOMA LAKES**  
 FILE NO. 061003  
 SHEET 2 OF 2