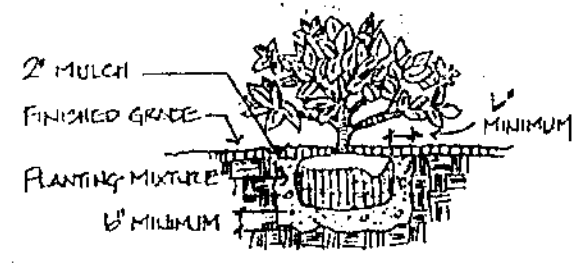


TREES

PALMS



SHRUBS

PLANTING DETAILS

MARK	QUANTITY	BOTANICAL/COMMON NAME	PROCUREMENT SPECS
<b>TREES &amp; PALMS</b>			
SM	(2)	Swietenia Mahogany / Mahogany (3 @ 15')	14'-16" Ht/5'-6" Sp/4" Ct
CV	(2)	Callistemon Viminalis / Weeping Bottle Brush	Min 10' Ht/6" Sp/4" Ct
AK	(6)	Arecastrum Komarovianum / Queen Palm	16'/18'/20" Ht
SP	(6)	Sabal Palmetto / Sabal Palm (10-4-8)	16'/18'/20" Ht
BB	(2)	Bucida Buceras / Black Olive (8 @ 15')	12' Ht/6" Sp/6" Ct
CE	(2)	COCONUTS & BRECTIA/BUYONWOOD	12' HT/6" Sp/4"
<b>SHRUBS &amp; GROUNDCOVER</b>			
FB	(45)	Ficus Benjamina / Weeping Fig	5 Gal/48" Ht/24" Sp/36" O.C.
CI	(108)	Chrysobalanus Icaco / Red Tip Coco Plum	3 Gal/36" Ht/36" O.C.
JS	(91)	Jasminum Simplicifolium / Shiny Jasmine	3 Gal/24" Ht/12" Sp/24" O.C.

NOTE: Trees to have minimum 6'8" clear wtd.

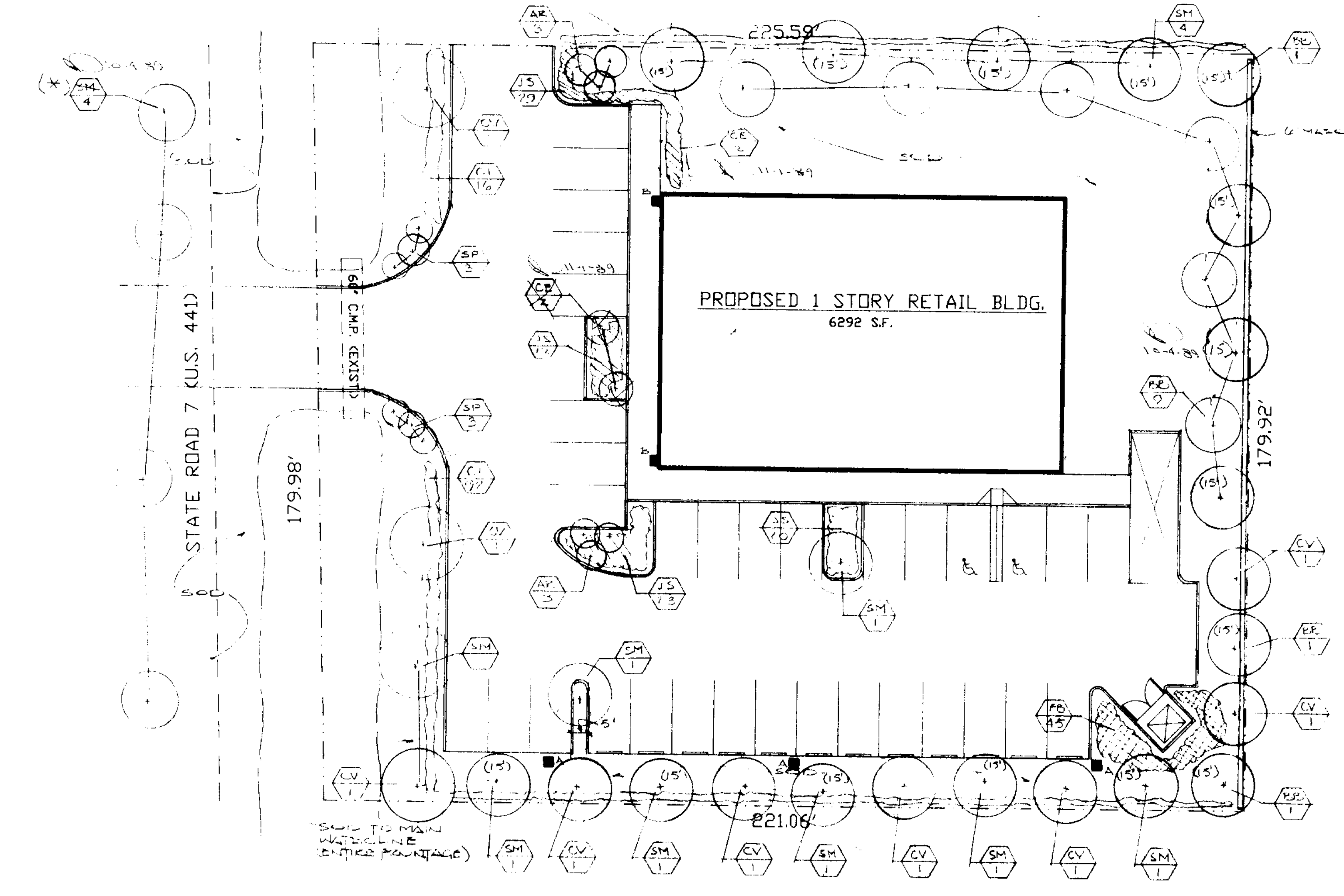
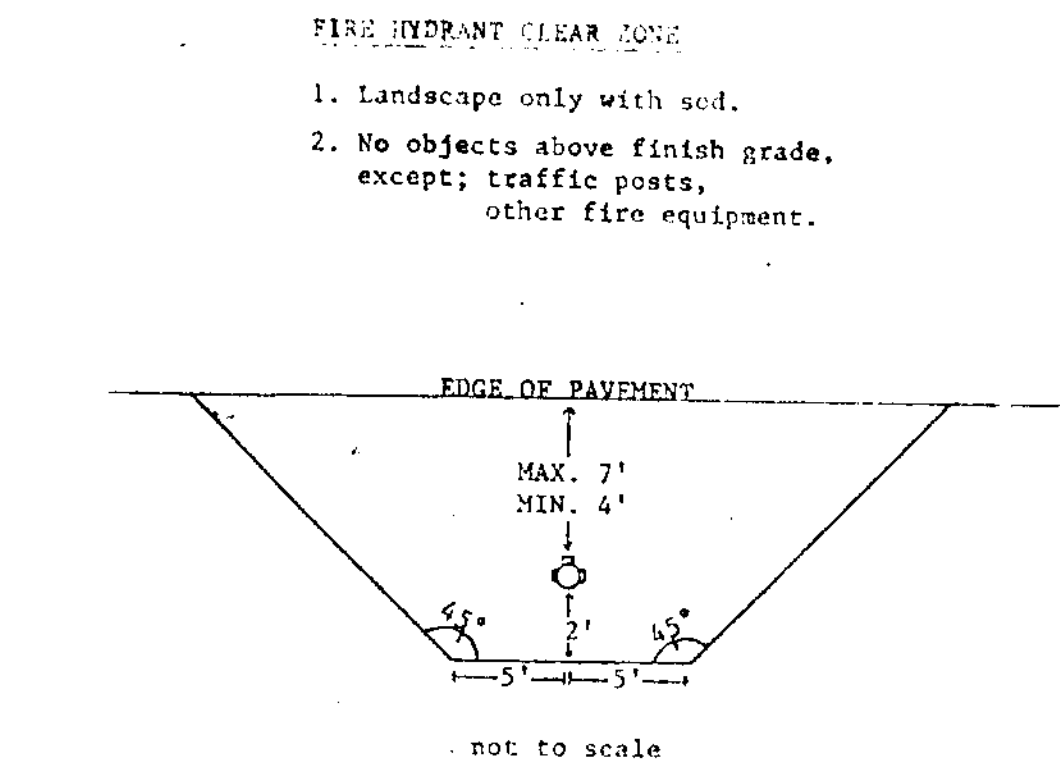
TREES NOTED (15') - MIN 13' HGT

**LANDSCAPE SPECIFICATIONS**

- 1.0 GENERAL
- 1.1 DESCRIPTION OF WORK
  - A. The extent of landscape development work is shown on drawings and details.
  - B. Work includes furnishing all trees, shrubs and groundcovers, sod, materials, and equipment and labor necessary for the installation of plant materials as indicated on the drawings and described in these specifications.
- 1.2 QUALITY ASSURANCE
  - A. All plant material furnished shall be Florida No. 1 or better. Specimen material to be Florida Fancy.
  - B. Provide trees and shrubs grown in accordance with good horticultural practices. Provide healthy, vigorous stock free of disease, insects, eggs, larvae and defects such as knots, sun-scald, injuries, abrasions, or disfigurement.
  - C. Provide trees and shrubs at sizes shown on plans.
  - D. Do not make substitutions. If specified material is not available, a request for change must be submitted to the project Landscape Architect. Only approved written changes will be accepted.
  - E. The Landscape Architect reserves the right to reject all materials that do not meet the drawing and/or specification requirements.
- 1.3 QUANTITIES
  - A. All quantities indicated on the plant list are intended as a guide for the bidders and do not relieve the bidder of his responsibility to do a comprehensive plant take-off. Should a discrepancy occur between the bidder's take-off and the plant list, the Landscape Architect is to be notified for clarification prior to the submission of bids.
- 1.4 GUARANTEE
  - A. All plant material shall be guaranteed for a period of 90 days from the date of final acceptance. The Contractor shall notify the Landscape Architect upon completion of the work in order to receive final acceptance under this contract.
  - B. All plants required under this contract that do not meet specifications, or are missing, dead, or not in satisfactory growth at the time of final acceptance, as determined by the Landscape Architect, shall be removed from the site and replaced with material as required by the terms of the contract. All replacement plants are to be installed within 2 weeks of rejection unless notified otherwise by the Landscape Architect. A new warranty period shall begin upon replacement and acceptance by the Landscape Architect, for all replaced plants. The cost of all replacements shall be born by the Contractor.
- 1.5 DELIVERY, STORAGE, AND HANDLING
  - A. All trees, palms, and shrubs that are field grown or collected and balled and burlapped shall be root pruned a minimum of 4 weeks prior to delivery to the site, according to standard horticultural practices.
  - B. Provide freshly dug trees and shrubs. Do not prune branches prior to delivery. Do not bend or blind-tie trees or shrubs in such a manner as to damage bark, break branches or destroy the plant's natural shape. Provide protective covering during delivery.
  - C. Trees and shrubs shall be planted upon delivery to the site. If planting is delayed by more than 6 hours, all material shall be protected from the sun, weather and mechanical damage, and the roots kept moist.
- 1.6 JOB CONDITIONS
  - A. Utilities: Determine location of all underground utilities and perform work in such a manner as to avoid any damage to said utilities.
  - B. Excavation: When conditions detrimental to plant growth are encountered, such as rubble fill, drainage problems, and/or other obstructions, the Contractor shall notify the Landscape Architect before planting.
  - C. Final grades: The Contractor shall maintain and/or return to their original condition, all site grades and elevations.
  - D. Install all trees and shrubs prior to planting of lawns. If planting is delayed by more than 6 hours, all material shall be protected from the sun, weather and mechanical damage, and the roots kept moist.
- 2.0 PRODUCTS
  - A. Topsoil: Provide new topsoil as required which is fertile, friable, natural loam, surface soil, reasonably free of weeds, clay lumps, brush, weeds and other litter, and roots, stumps, stones larger than 2" in any dimension, and other extraneous or toxic matter harmful to plant growth.
  - B. Cypress Mulch: Windproof shredded cypress mulch, unless otherwise indicated, shall be used for mulching around all shrubs, ground covers and tree trunks, and placed to a minimum depth of 2 inches.
  - C. Fertilizer for trees, shrubs and groundcovers shall be commercial grade, complete fertilizer with chemical designation of 6-6-6 or 8-8-8. At least 50% of the nitrogen shall be derived from natural organic sources. Fertilizer shall be delivered in unopened containers and bear the manufacturer's guaranteed statement of analysis.
- 3.1 PREPARATION
  - A. Grading: The finish grade will be established by others prior to beginning any planting operations.
  - B. Removal of rubbish: Should any objectional materials such as stones or construction debris be encountered they shall be promptly removed from the site by the Landscape Contractor, before planting.
- 3.2 PLANTING TREES AND SHRUBS
  - A. Layout: Locations for trees and shrubs and the outlines of ground-cover beds are indicated on the plan. All plant locations shall be staked in the field by the Contractor, prior to planting and to the satisfaction of the Landscape Architect and/or Owner's representative. Where construction or utilities below ground or overhead are encountered, or where changes have been made in the construction, necessary adjustments will be approved by the Landscape Architect and/or Owner's representative.
  - B. Soil Preparation: Soil used shall be thoroughly mixed with peat to produce 25 percent peat by volume. The soil should be in a relatively dry state and mixed thoroughly by hand or rotary mixer. All planting soil shall be treated with an approved herbicide as recommended by the Landscape Architect, in accordance with the manufacturer's specifications.
  - C. Pit Sizes: Minimum diameter (width) and depth of planting pits for balled and burlapped and container grown plants shall be as follows:
    - 1. Trees- width: 18" greater than diameter of ball or spread of roots.
    - 2. Shrubs- width: 6" greater than diameter of ball or spread of roots.
    - 3. Trees and shrubs- depth: 4" greater than depth of ball or roots to root = 4 inches of topsoil balled under the root ball. Large, heavy trees and shrubs may sit directly on unweave of pit bottom if it is determined that undue settling may occur.

- D. Backfilling: When the plant pit has been excavated as specified above and the plant has been set, the pit shall be backfilled with planting soil at the following minimum rates:
  - 1. One-half cubic yard per tree.
  - 2. One cubic yard per fifty shrubs.
- E. Guy and Stake Trees: Guy all trees 1-1/2" and greater in caliper in three directions with double strands of number 10 galvanized wire attached to approved anchors driven below grade. When securing wires to trees, cover all wires which may come in contact with any part of the tree with new 3/4" diameter rubber hose; place gues not less than 1/3 of the height of tree above finished grade and if possible, above substantial limbs 1" or more in diameter. All hoses shall be interlocked around the trunk. Place anchors so that gues are equally spaced and at 45 degree angles to horizon. Keep gues tight until project completion. All palms with trunk height above 6' shall be supported and held in an upright position by secure staking in accordance with best current horticultural and landscape practice, and in a manner acceptable to the Owner. Any trees that lean or fall due to improper staking shall be uprighted by the Contractor within 24 hours. The warranty period for these trees shall be extended an additional 90 days.
- F. Mulching: All trees and shrub beds shall be mulched immediately after planting, to a 2" depth. Prevent wind displacement of mulch by thoroughly wetting down.
- G. Pruning: All trees and shrubs shall be pruned as necessary to remove injured limbs and branches, deadwood, suckers and any undesirable branching as directed by the Landscape Architect. Pruning shall be done with clean, sharp instruments and promote growth according to each species' characteristic natural form.
- H. Watering: All trees and shrubs shall be thoroughly watered at the time of planting. They shall continue to be watered as sufficient to maintain adequate soil moisture until final acclimation. The irrigation system should not be relied upon and it is the Contractor's responsibility to insure proper watering of all trees and shrubs.

- 3.3 CLEAN UP
  - A. Any excess soil or debris on any paved areas as a result of landscape operations shall be removed promptly, keeping these areas clean as the work progresses. Upon completion of the planting, all excess soil and debris which have not been previously cleaned up shall be removed from the site or disposed of as directed by the Landscape Architect and/or Owner's representative.
- 3.4 MAINTENANCE
  - A. Maintenance shall begin immediately after each plant is planted and shall continue until all planting has passed final inspection and acceptance. Maintenance shall include watering, weeding, pruning, cultivating, removal of dead material, protection of plants from frost or upright positions, and restoration of the planting saucer and any other necessary maintenance operations. Proper protection to adjacent areas shall be provided and any damage resulting from planting operations shall be repaired promptly at no cost to the Owner.
  - B. In the event of the threat of serious damage resulting from insects or disease prior to final acceptance, the plants shall be treated by preventive or remedial measures approved for good horticultural practice, at no additional cost to the Owner.
  - C. During the period of construction, before final approval, the Contractor will be required to repair at his own expense any significant damage to any previously laid sod caused by "washouts, inadequate water, or other construction operations.
- 3.5 GUARANTEE
  - A. The Contractor, as part of this contract, shall furnish a written guarantee for all materials, workmanship and plant materials, except sod, for a period of 90 days from the time of completion and acceptance. (See section 1.4-b)
  - B. All plant materials shall be alive and in vigorous growing condition for each specific type of plant at the end of the guarantee period. Sod and seed shall be guaranteed for a two-month period dating from final lawn acceptance, and any lawn areas which become necessary during the guarantee period to insure a vigorous stand of grass will be the responsibility of the Contractor. (See section 1.4-h)
- 3.6 REPLACEMENT
  - A. At the end of the guarantee period, any plant that is dead or not in satisfactory growth as determined by the Owner or his representative, for any reason, shall be removed and replaced by the Landscape Contractor within 2 weeks of rejection, unless Contractor is notified otherwise. Replacement plants shall be guaranteed for 90 days after date of replacement.
  - B. All replacements shall be plants of the same kind and size as those specified in the plant list. They shall be furnished and planted as specified herein at no additional cost to the Owner.
- 3.7 CARE AND MAINTENANCE SCHEDULE
  - A. The Contractor shall furnish the Owner with a written and detailed description for the care and maintenance of all plant material at the time of final inspection. The Owner agrees to execute the instructions for such care and maintenance.



LANDSCAPE PLAN  
SCALE: 1" = 20'

SECTION	SHRUBS	TREES	PROVIDED
13-44(4)	95	19	47 Trees + 4 @ Street (8)
13-44(6)	Various	3	131 Shrubs
13-44(7)	20	4	108 Hedge
13-44(3a)	Hedge Included	-	Note: See Schedule and Plan for Plant Types and Placement
13-44(10a)	Hedge Included	9	
13-44(12a)	N/A	4	
13-44(13)	N/A	-	
TOTAL		30	

- 1. If DOT does not add area from water line to edge of pavement, Discount Auto Parts to take appropriate zoning action for that area.
- 2. Add shrubs as necessary on north property line to fill existing hedge.
- 3. Trees marked (\*) to be installed with written permission from Florida D.O.T.

**SIGHT DISTANCE**  
 3-44(10a) ACESAN/ACESAN/ACESAN  
 3-44(12a) ACESAN/ACESAN/ACESAN  
 3-44(13) ACESAN/ACESAN/ACESAN

NOTE: ALL MOBILE CLEANING EQUIPMENT TO BE FULLY GUARDED FROM PUBLIC VIEW AND SUBJECT TO PLANNING BOARD

ALL PLANTS AND MATERIALS TO BE FURNISHED BY THE CONTRACTOR. THE CONTRACTOR SHALL BE RESPONSIBLE FOR OBTAINING ALL NECESSARY PERMITS AND APPROVALS FROM THE APPROPRIATE AGENCIES. THE CONTRACTOR SHALL BE RESPONSIBLE FOR OBTAINING ALL NECESSARY PERMITS AND APPROVALS FROM THE APPROPRIATE AGENCIES. THE CONTRACTOR SHALL BE RESPONSIBLE FOR OBTAINING ALL NECESSARY PERMITS AND APPROVALS FROM THE APPROPRIATE AGENCIES.

PROPOSED ONE STORY BUILDING FOR  
**DISCOUNT AUTO PARTS**  
 COCONUT CREEK  
**retronics associates** architects and planners  
 8 & 58 northwest 4th street, suite 100, tampa, florida 33601  
 (813) 572-8590

DATE 9-6-89  
 13-44-13

SCALE A-N

PROJECT NUMBER  
89067

SHEET NUMBER  
LP-1

Joe New  
10.2.89