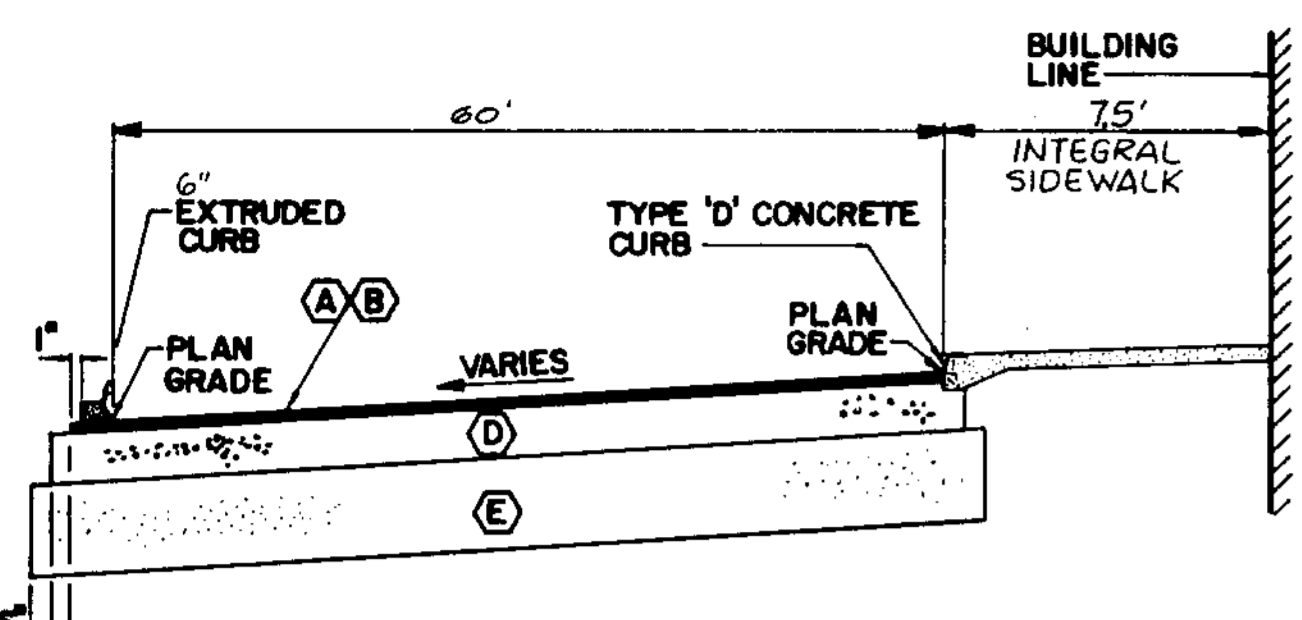
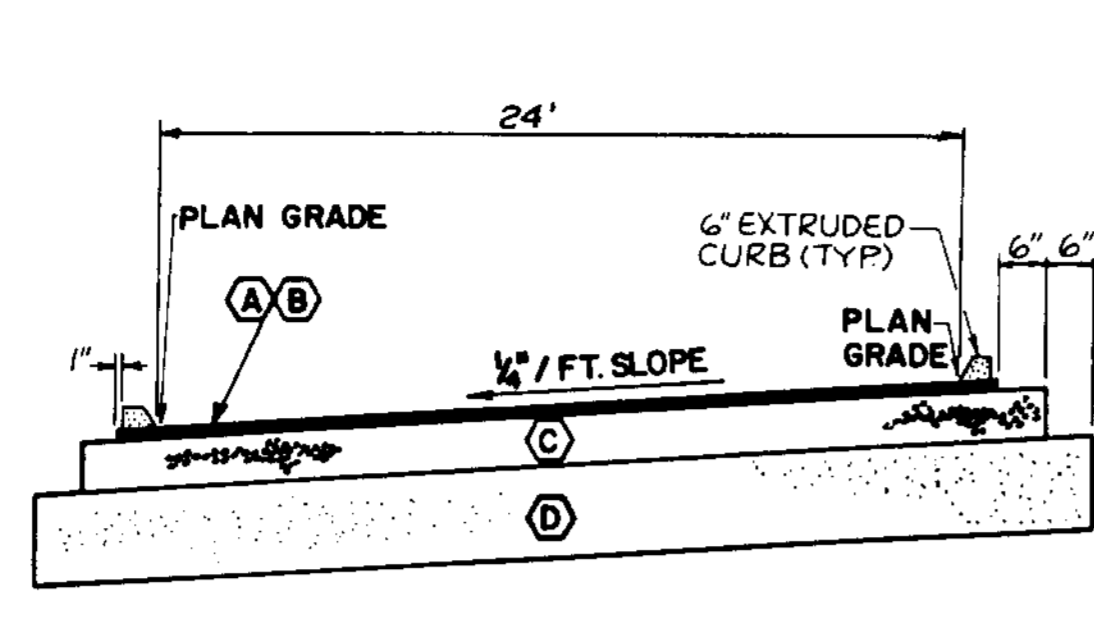


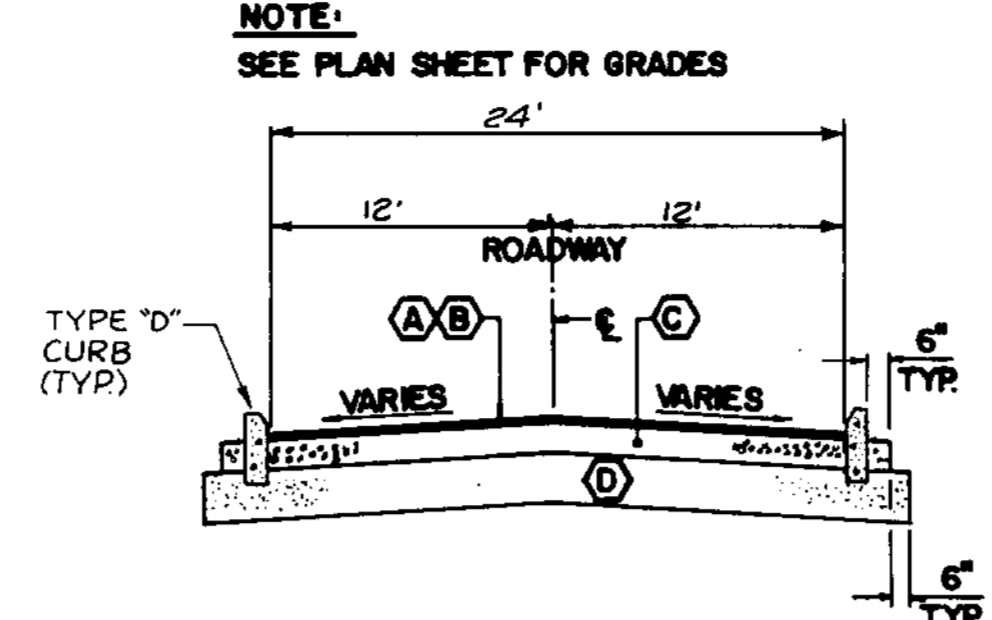
STATE ROAD 7 (US 441)



SECTION A-A

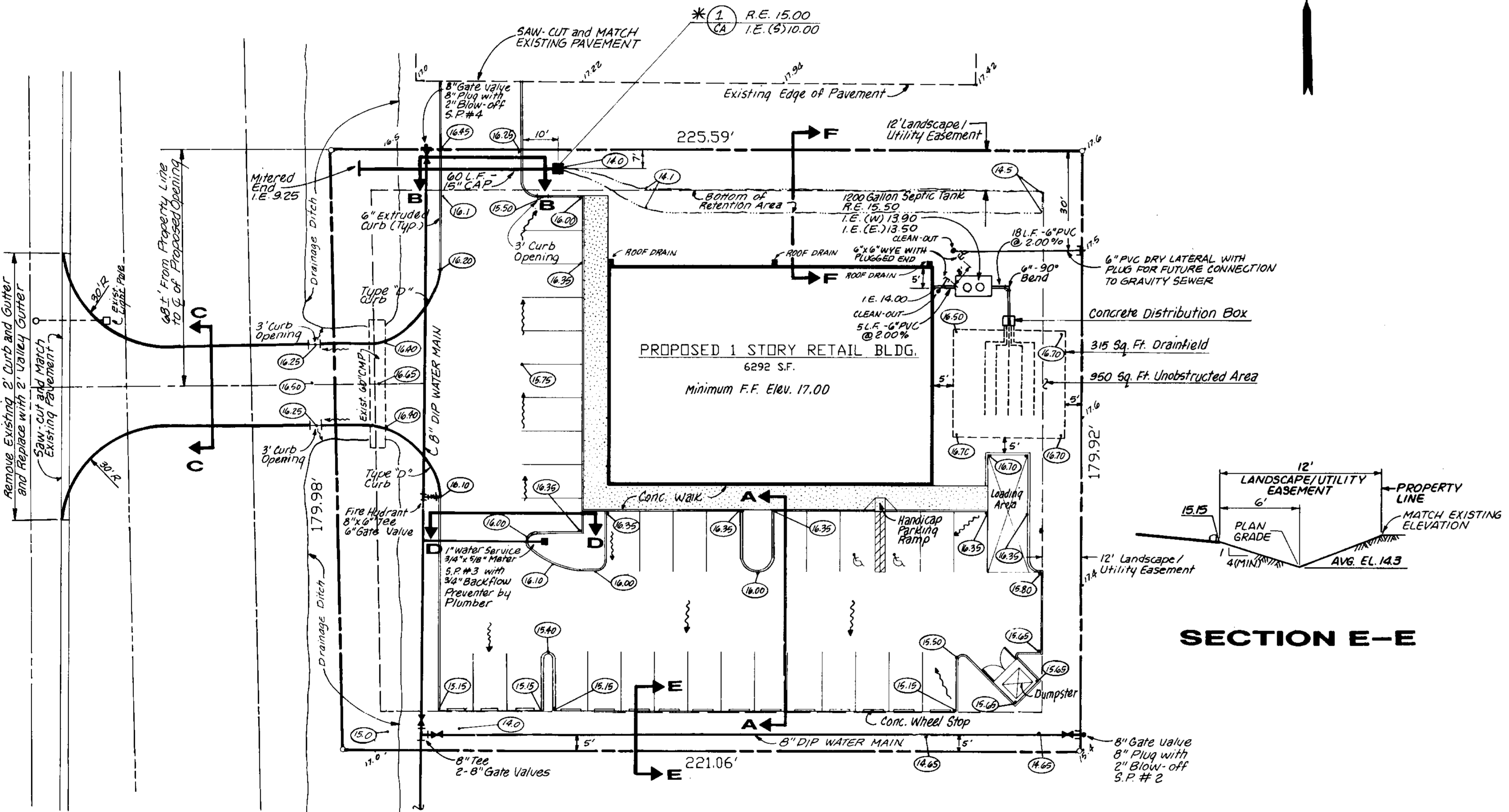
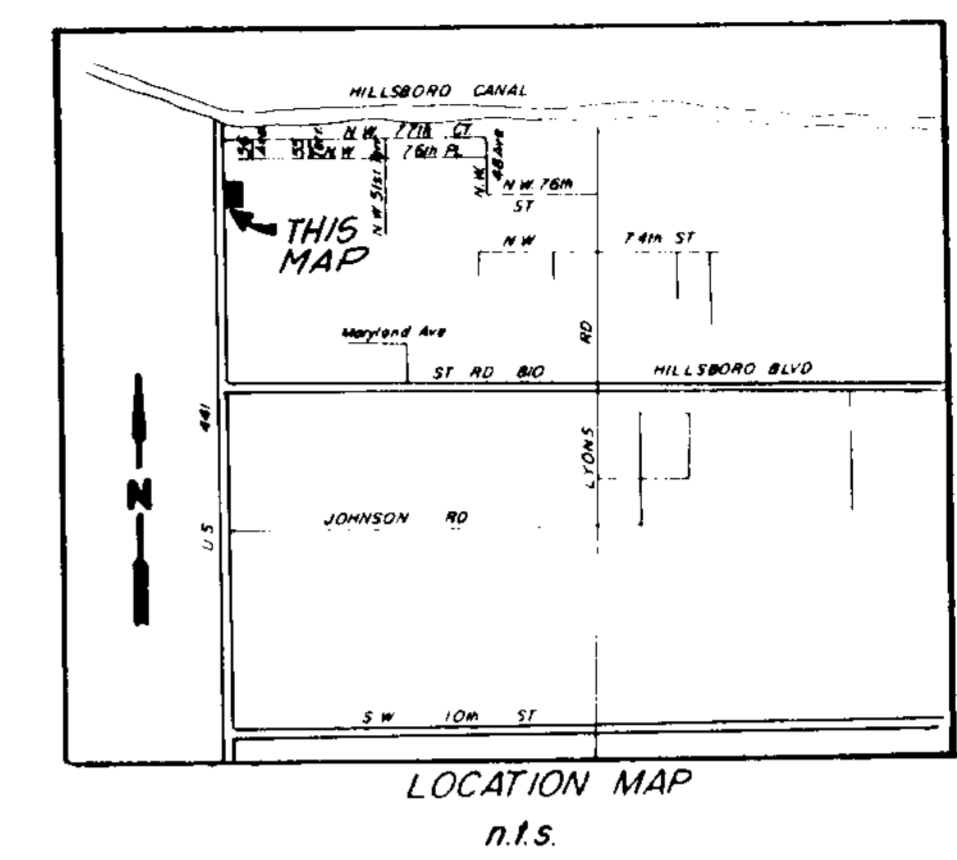


SECTION B-B



SECTION C-C

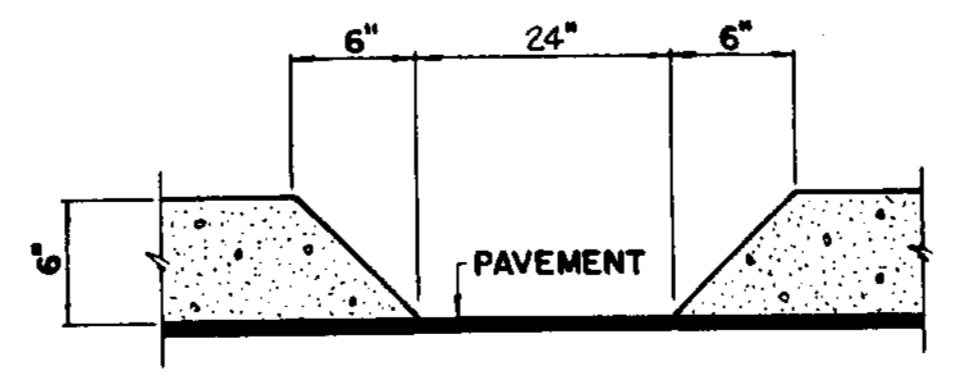
NOTE:
SEE PLAN SHEET FOR GRADES



SEE SHEET C-4 FOR CONTINUATION

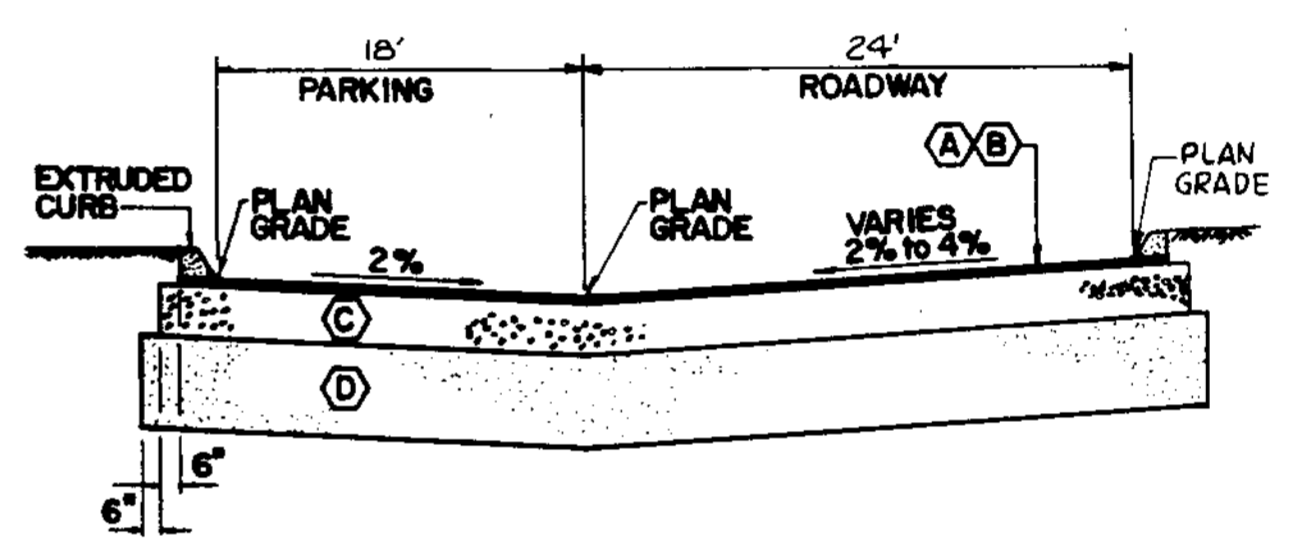
LEGEND

- Structure No. (1) Rim Elevation
- Type of Structure (A) Invert Elevation
- (16.35) Proposed Elevation
- (17.25) Existing Elevation
- ~ Direction of Flow
- Proposed Catch Basin
- S.P.# Denotes Sampling Point Number

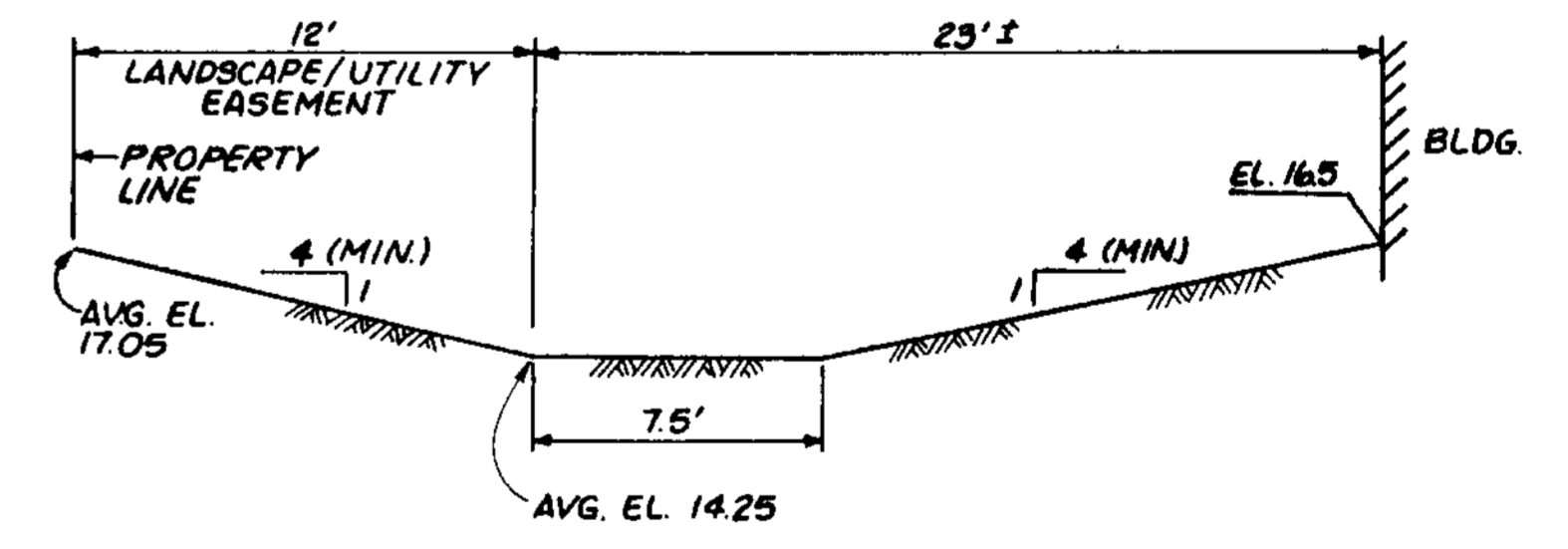


NOTE:
SEE DETAIL FOR CONCRETE RUNOFF CHANNEL TO BE INSTALLED AT ALL OPENINGS.

OPENING IN 6\"/>



SECTION D-D



SECTION E-E



SECTION F-F

- (A) 1\"/>

PAVING, GRADING and DRAINAGE PLANS
PLANS PREPARED BY

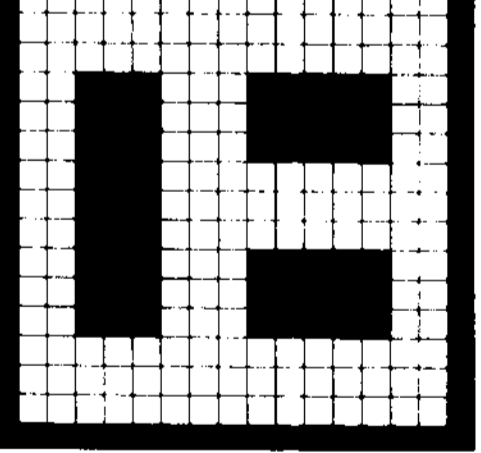
WESCON ENGINEERING
3500 PARK CENTRAL BLVD., NORTH
SUITE 200 • POMPANO BEACH, FL. 33064 • 908-0113

SEAL
STATE OF FLORIDA
REGISTERED PROFESSIONAL ENGINEER
35518
SEP 27 1989

* THESE PLANS ARE NOT VALID UNLESS EMBOSSED WITH ENGINEERS SEAL *

ALL DESIGN ARRANGEMENTS AND PLANS INDICATED ON THIS SHEET ARE THE PROPERTY OF THE ENGINEER AND THE CLIENT. NO PART OF THIS SHEET IS TO BE REPRODUCED OR TRANSMITTED IN ANY FORM OR BY ANY MEANS, ELECTRONIC OR MECHANICAL, INCLUDING PHOTOCOPYING, RECORDING, OR BY ANY INFORMATION STORAGE AND RETRIEVAL SYSTEM, WITHOUT THE WRITTEN PERMISSION OF THE ENGINEER ASSOCIATES, INC.

Proposed One Story Retail For
DISCOUNT AUTO PARTS
CITY OF COCONUT CREEK, FLORIDA
tecronics associates - architects and planners
6658 Northwest 44th Street, Sunrise, Florida 33351
(305) 572-6590



DATE	August 28, 1989

SCALE 1" = 20'

PROJECT NUMBER
89067

SHEET NUMBER
C1