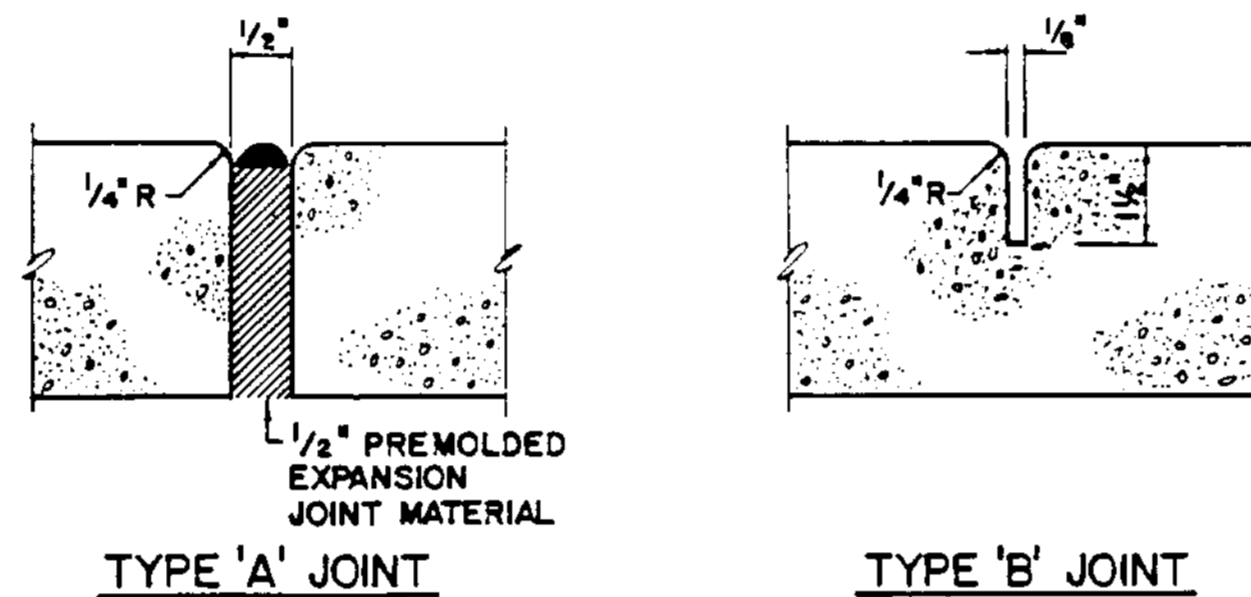


NOTE:
SIDEWALK SHALL BE 4" THICK EXCEPT IN DRIVEWAYS WHERE THE THICKNESS SHALL BE 6".

ELEVATION



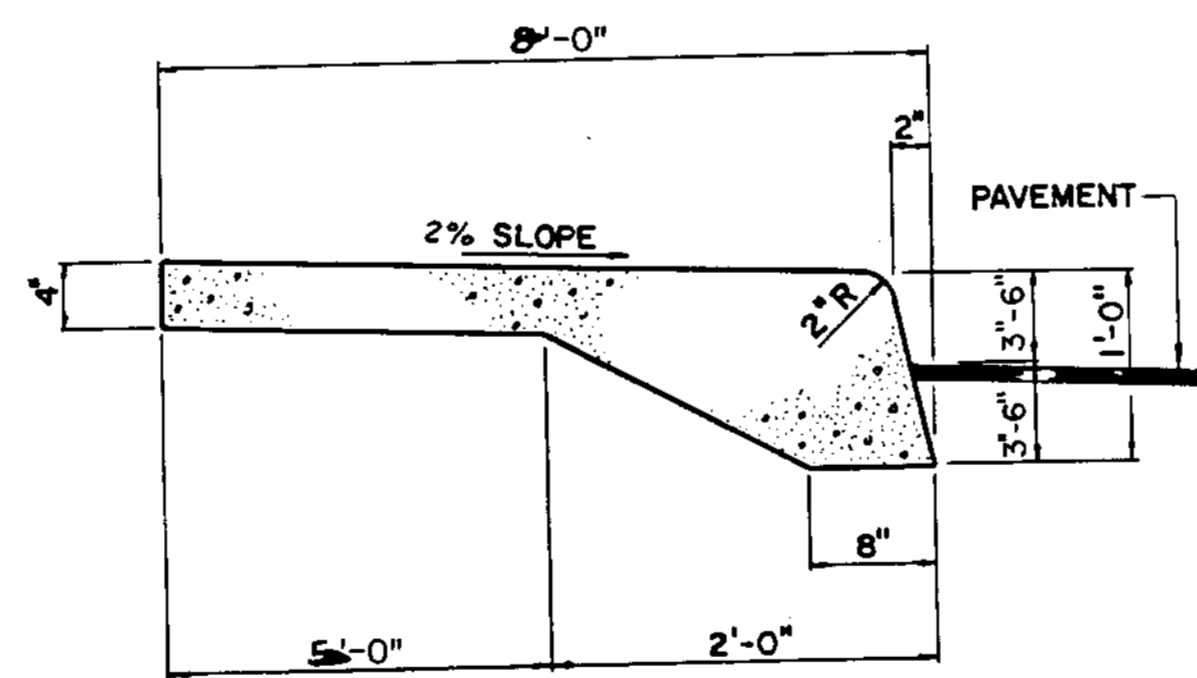
SIDEWALK DETAIL
(FRONT AND SIDE PROP. BLDG.)



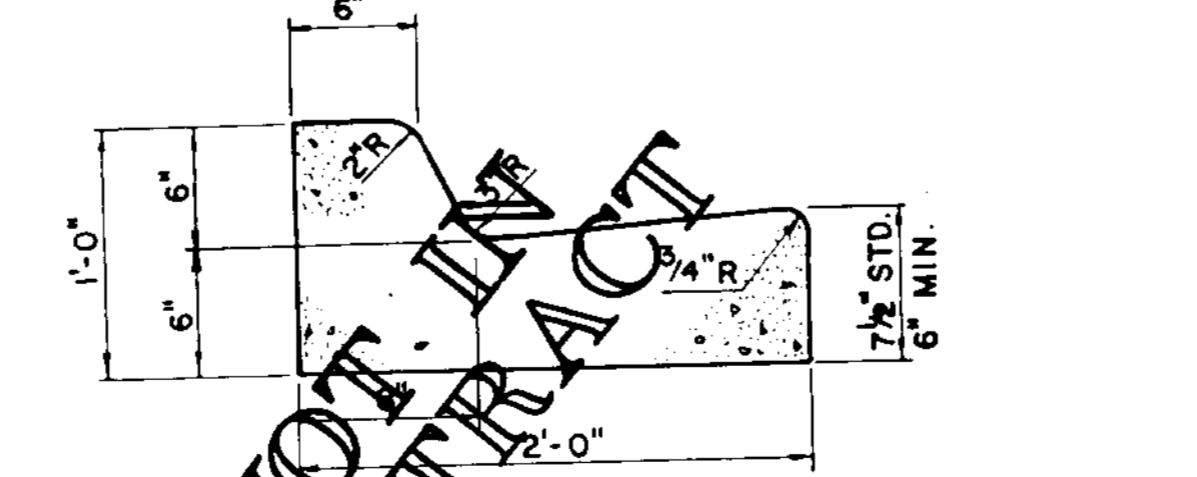
TYPE 'A' JOINT TYPE 'B' JOINT

TABLE OF SIDEWALK JOINTS	
TYPE	LOCATION
'A'	20 FEET CENTER TO CENTER ON SIDEWALKS, P.C. AND P.T. OF CURVES, JUNCTION OF EXISTING AND NEW SIDEWALKS, WHERE SIDEWALK ABUTS CONCRETE CURBS, DRIVEWAYS, AND SIMILAR STRUCTURES.
'B'	5 FEET CENTER TO CENTER ON SIDEWALKS.

SIDEWALK JOINTS

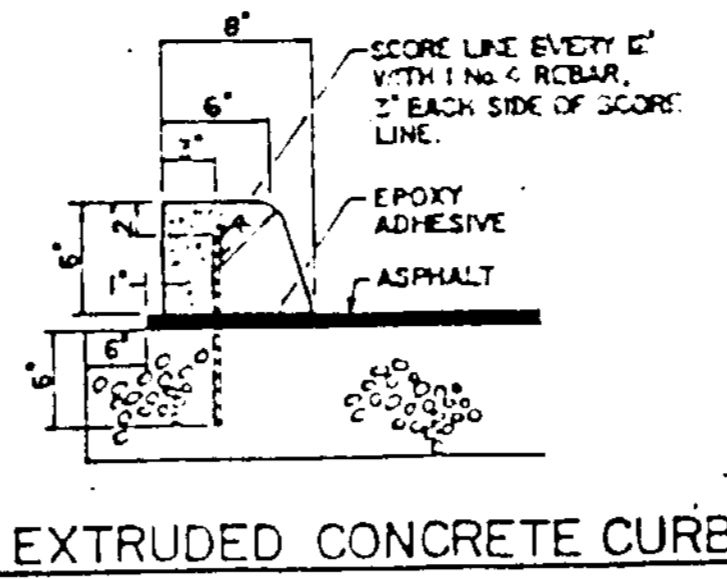


INTEGRAL SIDEWALK AND CURB DETAIL



NOTE:
WHEN USED ON HIGH SIDE OF ROADWAYS, THE CROSS SLOPE OF THE GUTTER SHALL MATCH THE CROSS SLOPE OF THE ADJACENT PAVEMENT AND THE THICKNESS OF THE LIP SHALL BE 6", UNLESS OTHERWISE SHOWN ON PLANS.

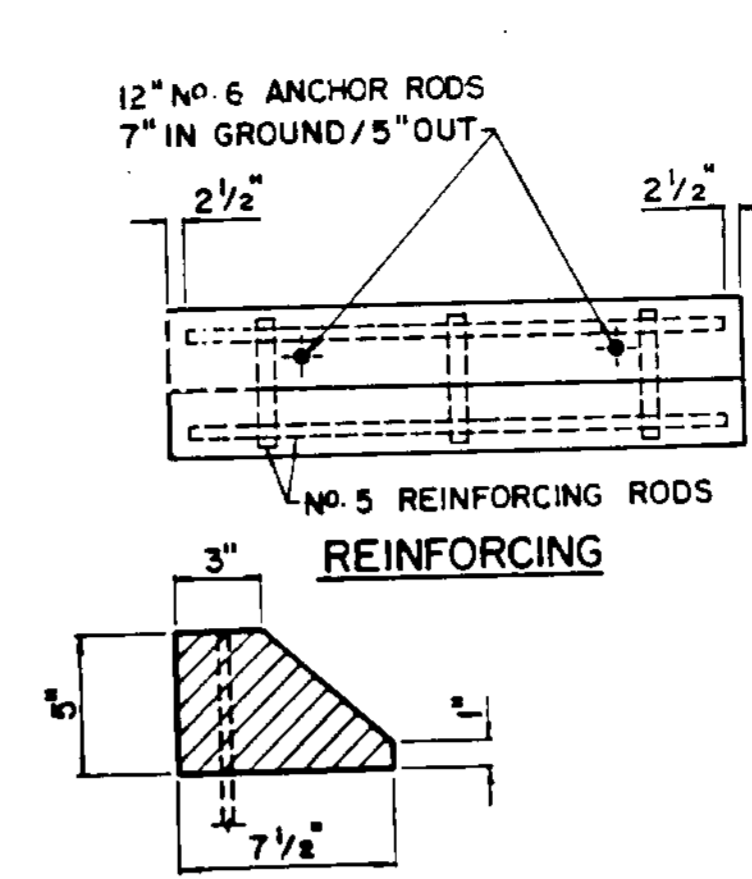
CONCRETE CURB AND GUTTER DETAIL
TYPE F



6" EXTRUDED CONCRETE CURB

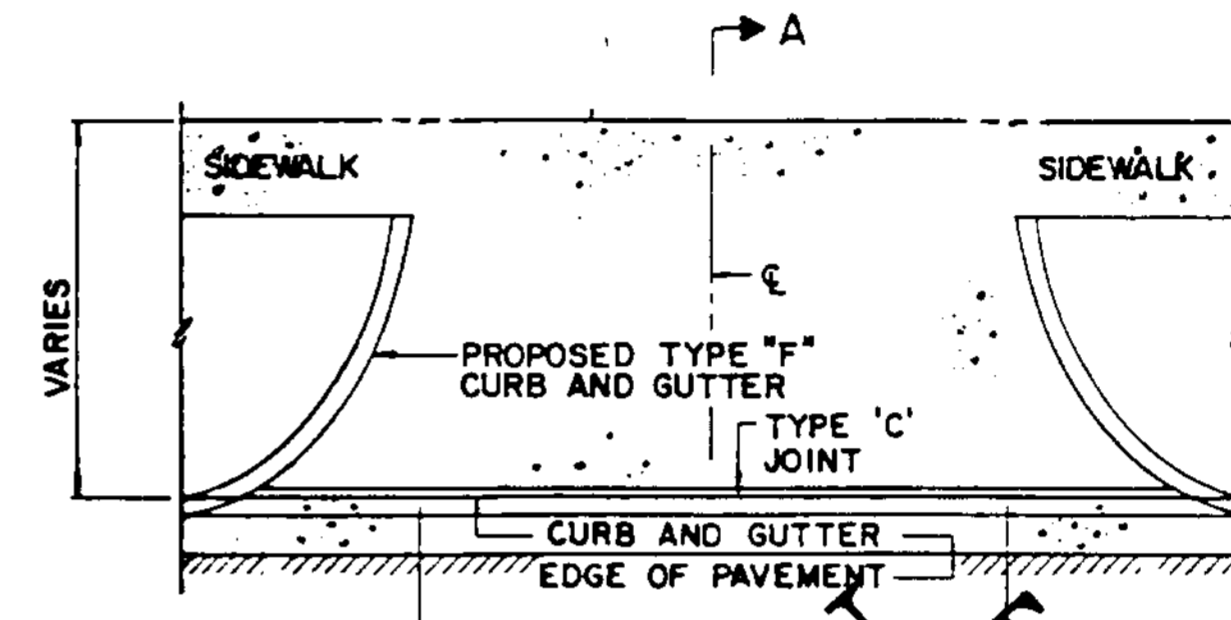
NOTE:
WHEEL STOP FORM SIZES MAY VARY DEPENDING ON MANUFACTURER.

PLAN



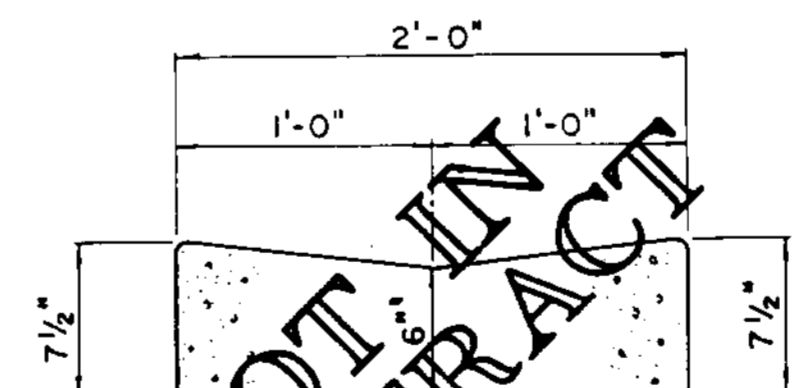
SECTION

WHEEL STOP DETAIL

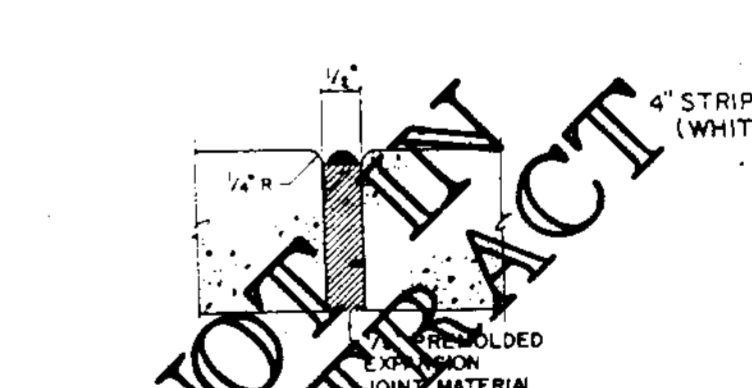


SECTION A-A

CONCRETE TURNOUT DETAIL
PER F.O.D.T. INDEX No. 506



VALLEY GUTTER DETAIL



90° ANGLE PARKING

PARKING LAYOUTS

PARKING STALLS
H = HANDICAP
V = VISITOR
E = EMPLOYEE



HANDICAP PARKING SIGN
FTO-25

NOTES:

- ALL LETTERS ARE 1" SERIES "C".
- TOP PORTION OF SIGN SHALL HAVE A REFLECTORIZED BLUE BACKGROUND WITH WHITE REFLECTORIZED LEGEND AND BORDER.
- BOTTOM PORTION OF SIGN SHALL HAVE A REFLECTORIZED WHITE BACKGROUND WITH BLACK OPAQUE LEGEND AND BORDER.

NO.	DATE	REVISIONS	BY

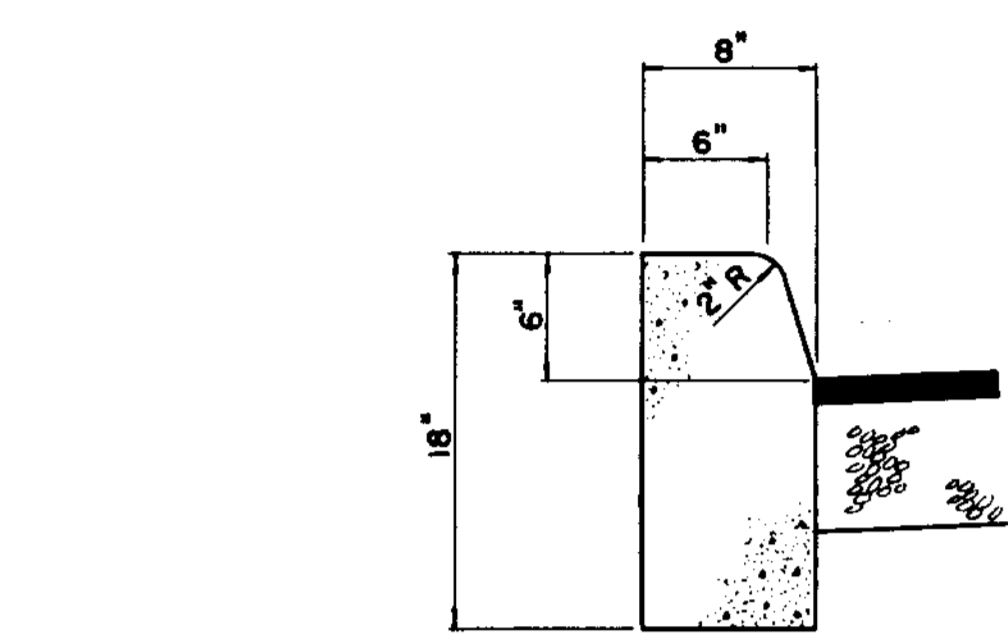
NEWSOM ENGINEERING

3500 PARK CENTRAL BLVD. NORTH
SUITE 200 • POMPANO BEACH, FL 33064 • 968-0113

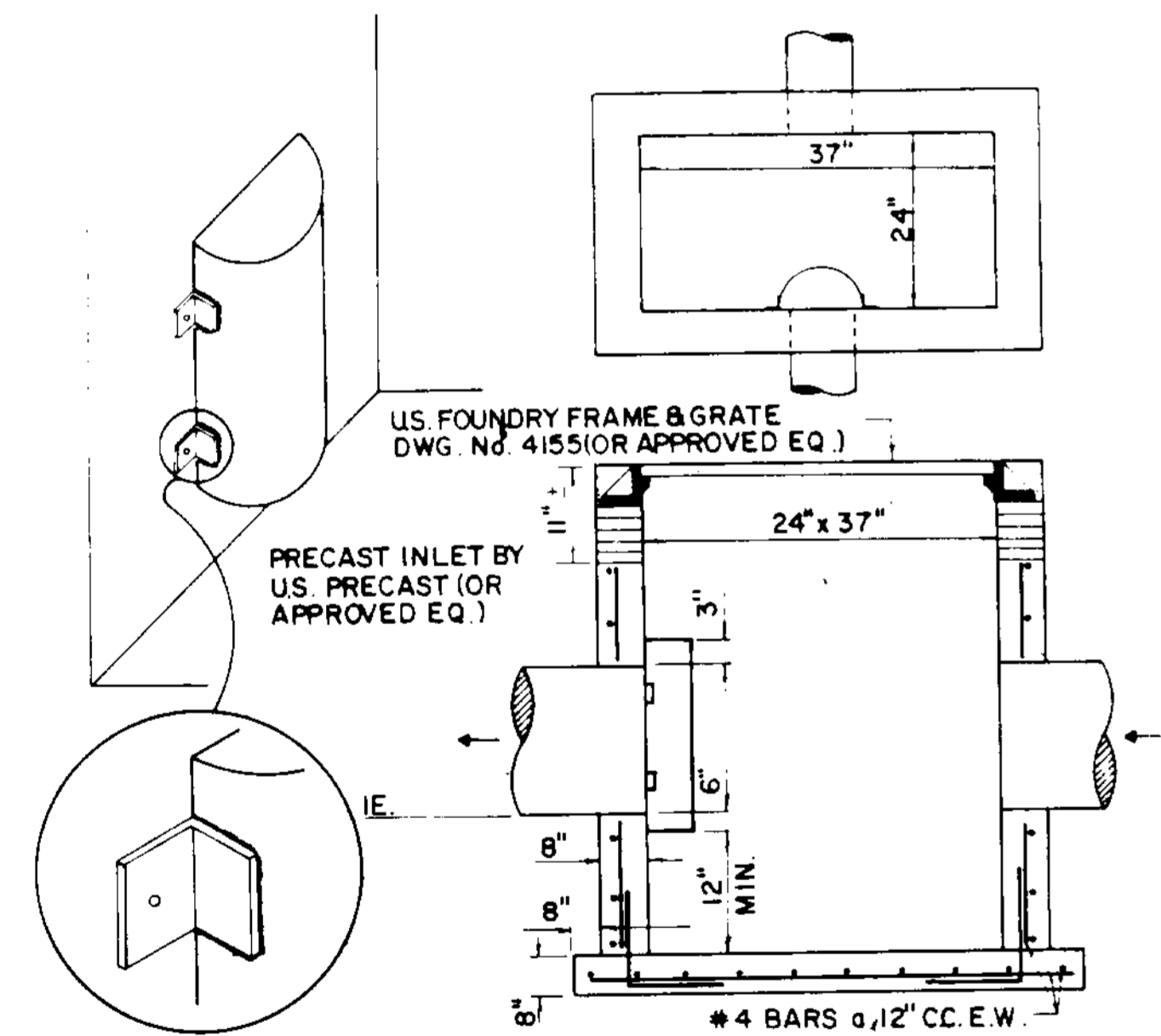
DISCOUNT AUTO PARTS
CITY OF COCONUT CREEK, FLORIDA

SEAL
DATE: 11/11/09
SHEET: C3

PROJECT No
890149

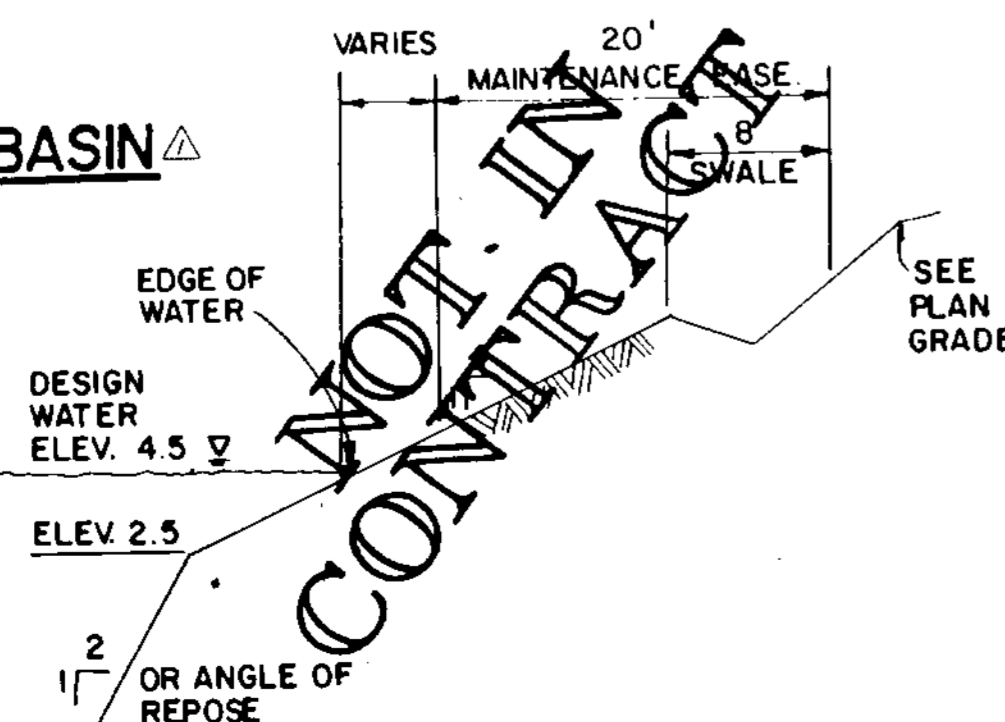


CONCRETE CURB DETAIL
TYPE D



- NOTES:
- HALF ROUND PLATE TO BE WELDED TO TOP FOR POLLUTION RETARDANT BASIN.
 - THE HALF ROUND PIPE SHALL BE ONE SIZE LARGER THAN DISCHARGE PIPE.
 - HOLES FOR PIPING SHALL BE 6" LARGER THAN PIPE O.D. AND SHALL CAST AT TIME OF FABRICATION.

POLLUTION RETARDANT BASIN



CANAL RESHAPING DETAIL