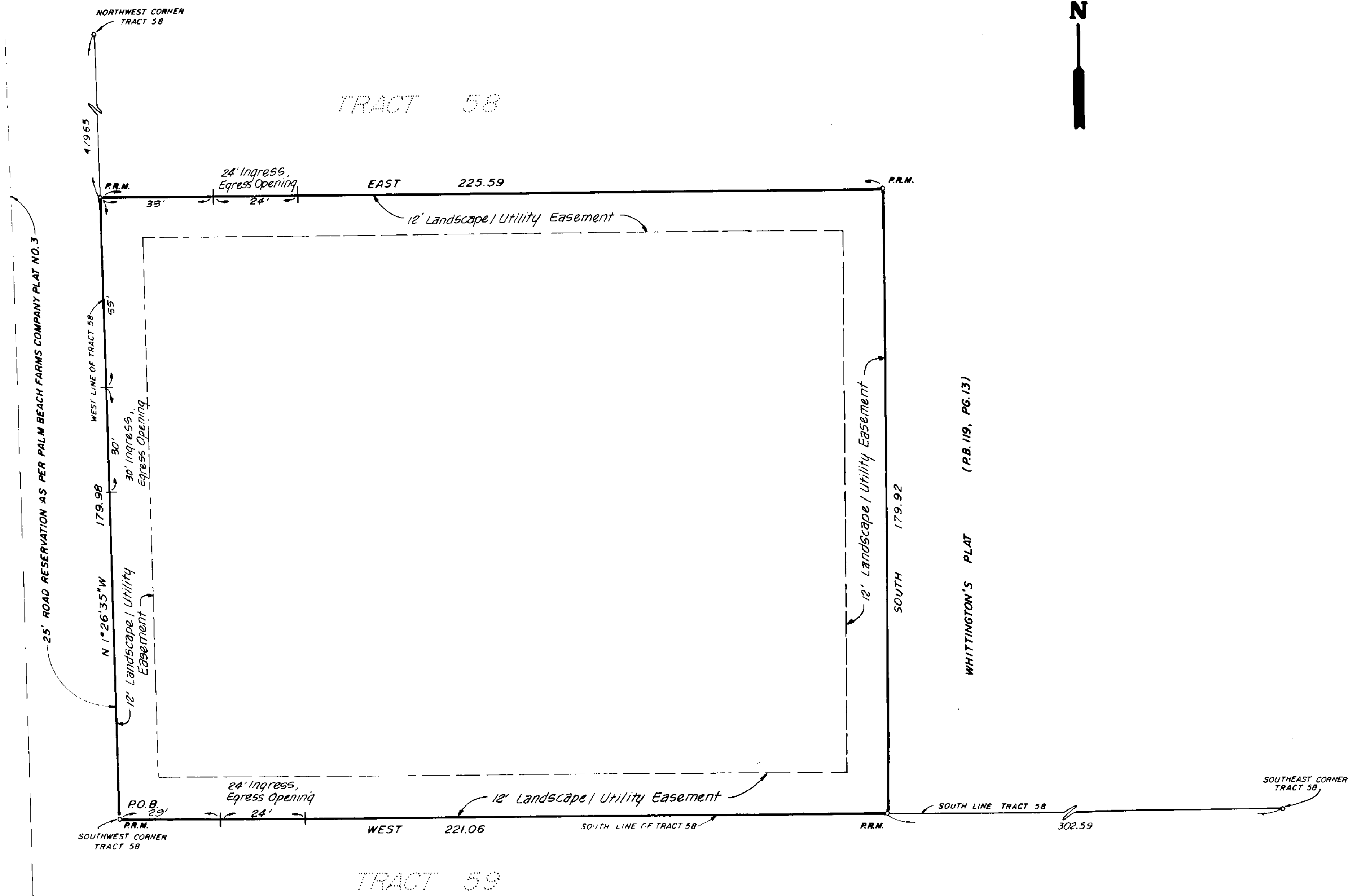
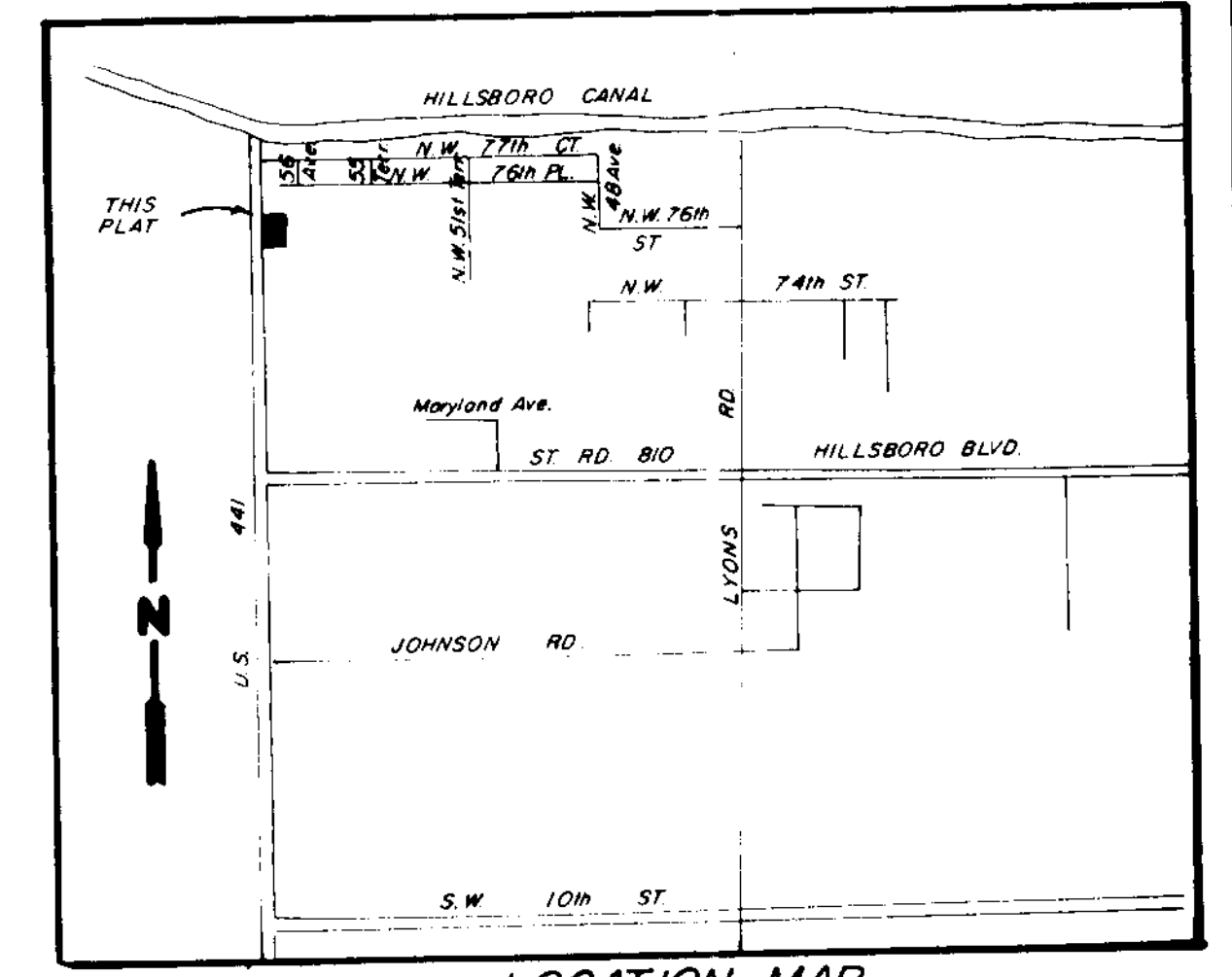
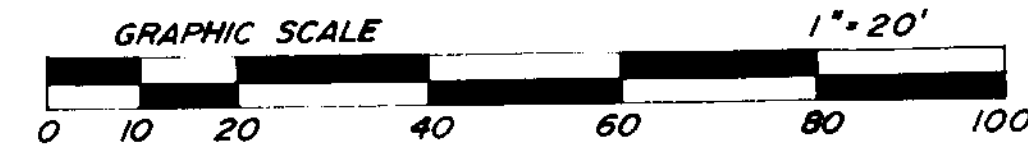
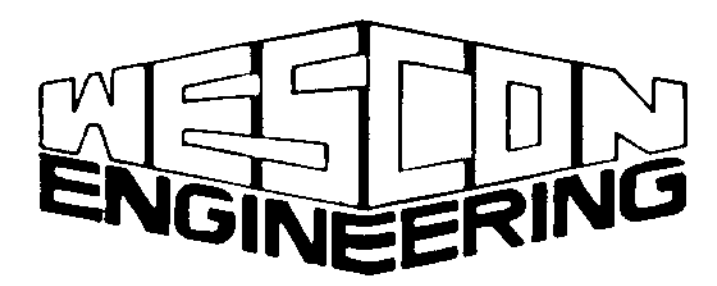


"MINOR PLAT SURVEY" DISCOUNT AUTO PARTS STORE No.145

A REPLAT OF A PORTION OF TRACT 58, BLOCK 82 OF "PALM BEACH FARMS COMPANY, PLAT NO. 3", LYING IN SECTION 31, TOWNSHIP 47 SOUTH, RANGE 42 EAST, BROWARD COUNTY, FLORIDA.



LEGAL DESCRIPTION:
A portion of Tract 58, Block 82, Palm Beach Farms Plat No. 3, according to the plat thereof as recorded in Plat Book 2 at Pages 45 through 54 of the Public Records of Palm Beach County, Florida being more particularly described as follows: Beginning at the Southeast corner of said Tract 58, thence N. 01 deg. 26 min. 35 sec. W. along the West line of said Tract 58, a distance of 179.98 feet; thence East along a line parallel with and 179.92 feet North of, as measured at right angles to the South line of said Tract 58, a distance of 225.59 feet; thence South a distance of 179.92 feet to the Point of Intersection with the South line of said Tract 58; thence West along the said South line of Tract 58 for a distance of 221.06 feet to the Point of Beginning. Containing 40,180.737 square feet or 0.9224 acres more or less, lying and being in Broward County, Florida.



3500 PARK CENTRAL BLVD., NORTH
SUITE 200 POMPANO BEACH, FL. 33064 968-0113

**CITY OF COCONUT CREEK
CITY COUNCIL**

THIS IS TO CERTIFY THAT THIS PLAT HAS BEEN APPROVED FOR RECORD BY THE CITY COUNCIL OF THE CITY OF COCONUT CREEK BY ORDINANCE, ADOPTED THIS _____ DAY OF _____, A.D. 198____, PURSUANT TO ORDINANCE NO. _____

CITY CLERK

CITY ENGINEER

THIS PLAT IS HEREBY APPROVED FOR RECORD THIS _____ DAY OF _____, A.D. 198____.

CITY ENGINEER
FLA. P.E. REG. # _____

PLANNING AND ZONING BOARD

THIS IS TO CERTIFY THAT THIS PLAT HAS BEEN APPROVED BY THE PLANNING AND ZONING BOARD OF THE CITY OF COCONUT CREEK, FLORIDA, THIS _____ DAY OF _____, A.D. 198____.

CHAIRMAN