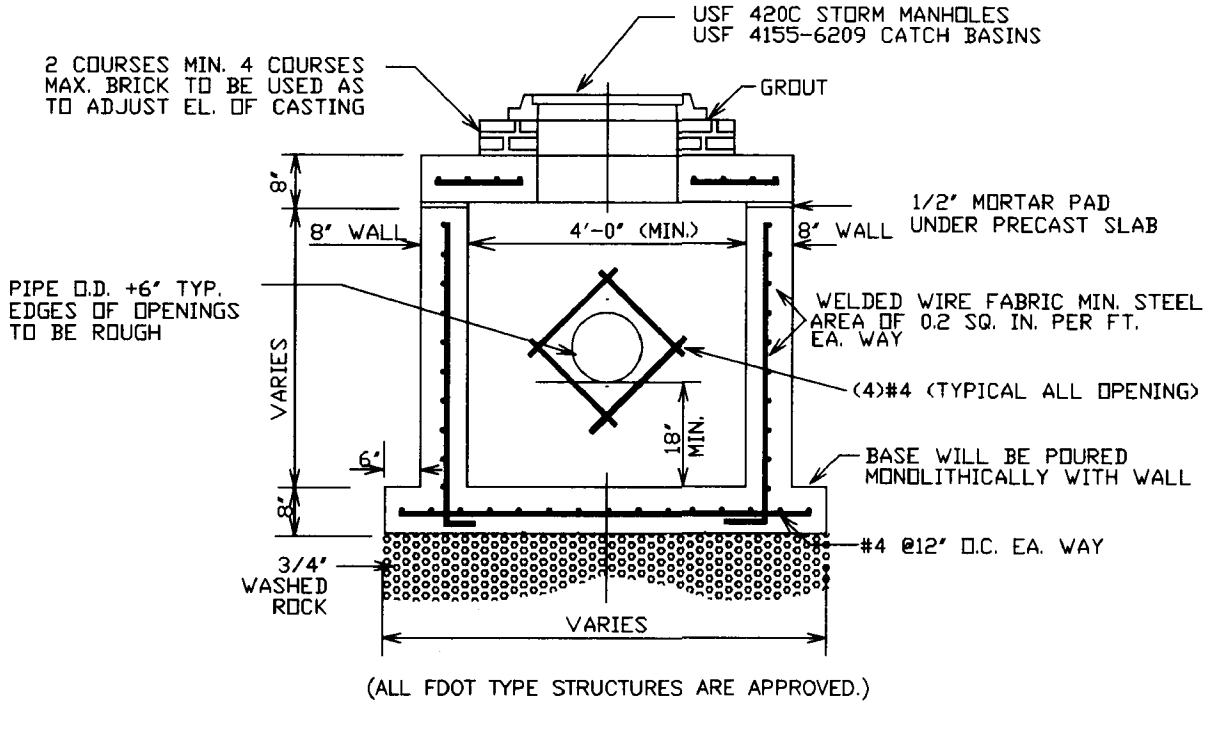
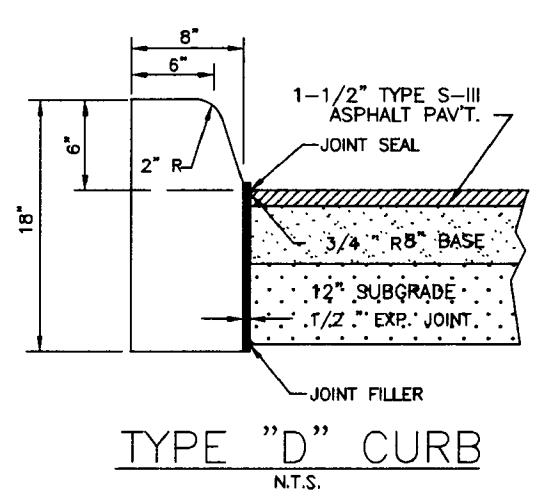
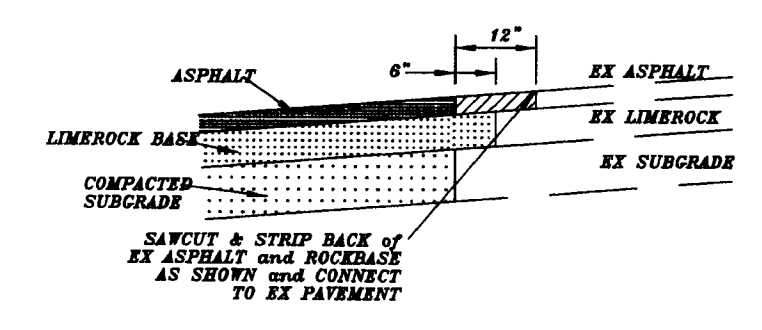


- GENERAL NOTES:
1. REPLACED BASE MATERIAL OVER DITCH SHALL BE TWICE THE THICKNESS OF THE ORIGINAL BASE BUT NOT LESS THAN "X" SCHEDULE.
  2. BASE MATERIAL SHALL BE PLACED IN 6 INCH MAXIMUM LAYERS AND EACH LAYER THOROUGHLY ROLLED OR TAMPED TO 98% OF MAXIMUM DENSITY, PER AASHTO T-190. BASE MATERIAL SHALL HAVE A MINIMUM LBR OF 100.
  3. ASPHALTIC CONCRETE PAVEMENT JOINTS SHALL BE MECHANICALLY SAWED.
  4. SURFACE TREATED PAVEMENT JOINTS SHALL BE LAPPED AND FEATHERED.
  5. SURFACE MATERIAL WILL BE CONSISTENT WITH THE EXISTING SURFACE.
  6. IF THE DITCH IS FILLED TEMPORARILY, IT SHALL BE COVERED WITH A 2 INCH ASPHALTIC CONCRETE PATCH TO KEEP THE FILL MATERIAL FROM RAVELING UNTIL PLACED WITH A PERMANENT PATCH.
  7. MINIMUM WIDTH OF PAVEMENT RESTORATION SHALL BE ONE LANE WIDTH.

PAVEMENT RESTORATION



DRAINAGE STRUCTURE DETAIL



CONNECTION TO EX PVMT DETAIL

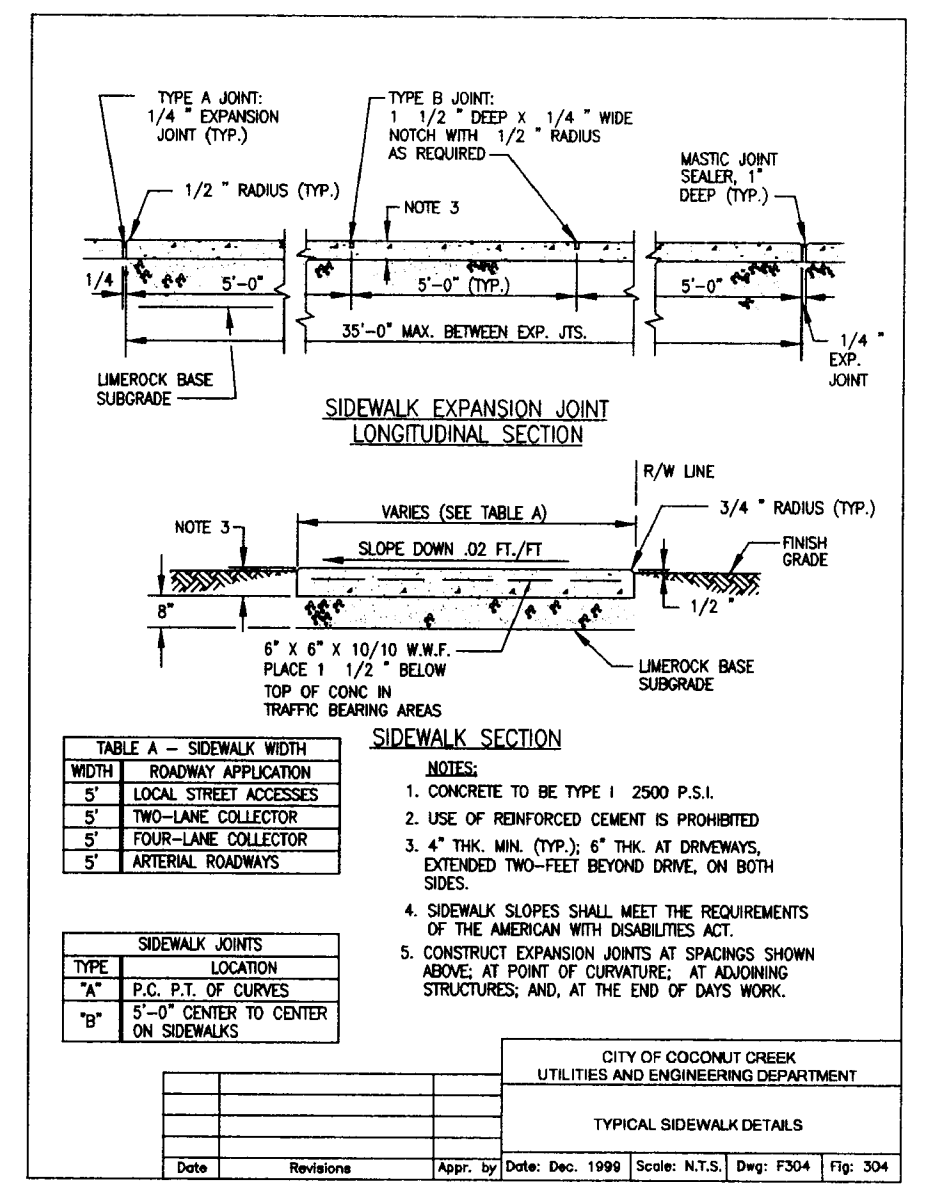


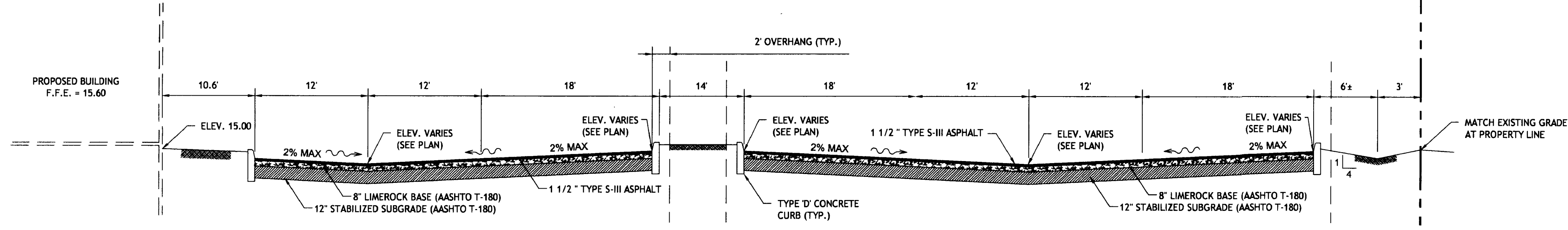
TABLE A - SIDEWALK WIDTH

WIDTH	ROWWAY APPLICATION
5'	LOCAL STREET ACCESSORIES
5'	TWO-LANE COLLECTOR
5'	FOUR-LANE COLLECTOR
5'	ARTERIAL ROADWAYS

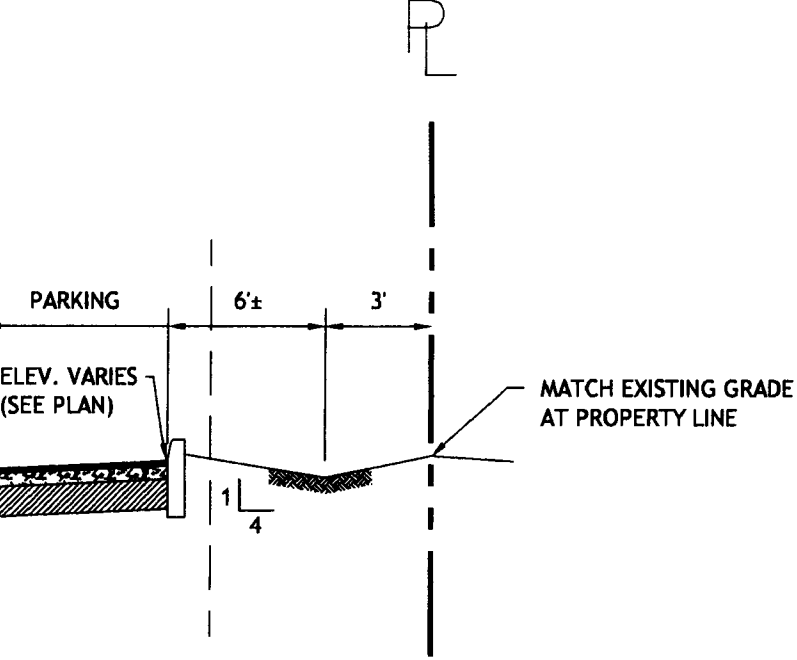
NOTES:

1. CONCRETE TO BE TYPE I 2000 P.S.I.
2. USE OF REINFORCED CEMENT IS PROHIBITED.
3. 4" MIN. DIA. (TYP.) 4" DIA. AT DRIVEWAYS, EXTENDED TWO-FEET BEYOND DRIVE, ON BOTH SIDES.
4. SIDEWALK SLOPES SHALL MEET THE REQUIREMENTS OF THE AMERICAN WITH DISABILITIES ACT.
5. CONSTRUCT EXPANSION JOINTS AT SPACINGS SHOWN ABOVE, AT POINT OF CURVATURE, AT ADJOINING STRUCTURES, AND, AT THE END OF DAYS WORK.

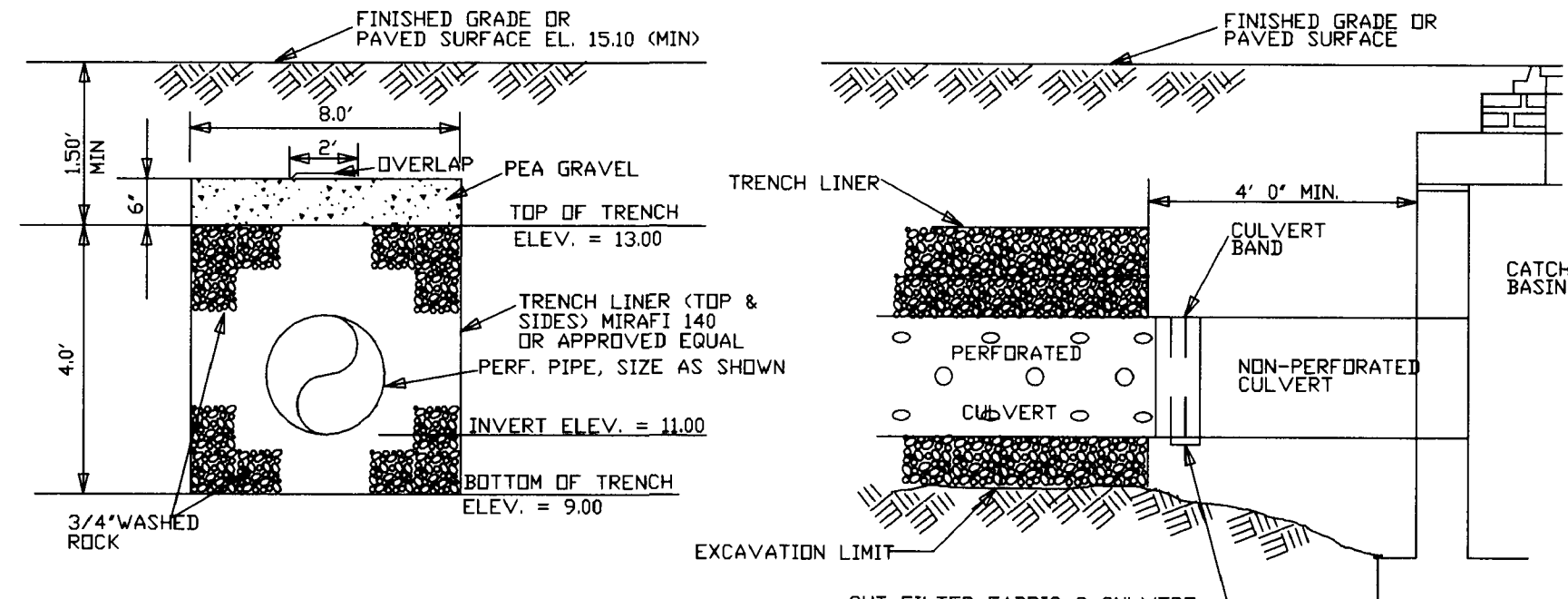
CITY OF COCONUT CREEK  
UTILITIES AND ENGINEERING DEPARTMENT  
TYPICAL SIDEWALK DETAILS



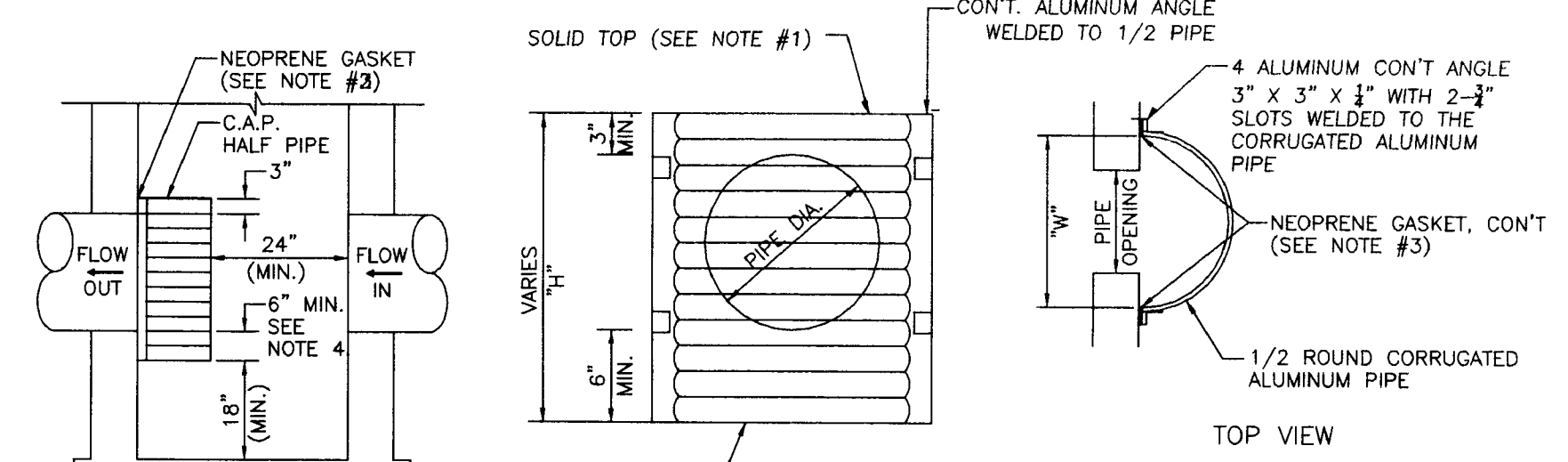
SECTION "A-A"



SECTION "B-B"



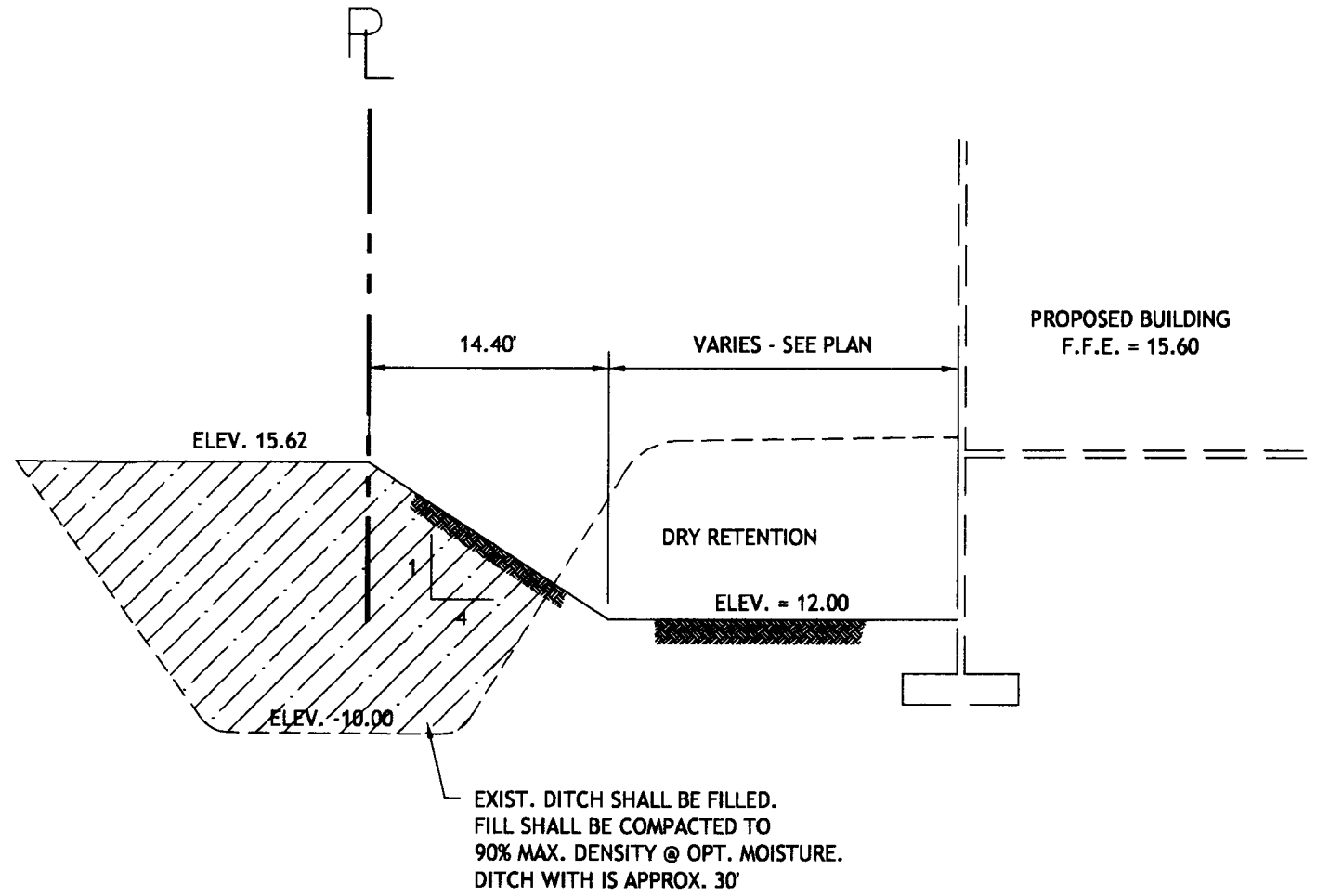
EXFILTRATION TRENCH DETAIL



PIPE DIA.	W <sup>1</sup> (IN)	W <sup>2</sup> (IN)	T (GAUGE)	H (IN)
15"	21"	24"	16	VARIES
18"	24"	30"	16	VARIES
21"	30"	30"	16	VARIES
24"	30"	36"	16	VARIES
30"	36"	42"	14	VARIES
36"	42"	48"	14	VARIES
42"	48"	54"	14	VARIES
48"	54"	60"	14	VARIES
54"	60"	66"	14	VARIES

1. RECTANGULAR STRUCTURE  
2. ROUND STRUCTURE

POLLUTION RETARDANT BAFFLE DETAIL



SECTION "C-C"

NO	DATE	BY	CKD	REVISIONS

SCALE: N.T.S.  
DATE: 08/08/2005  
DRAWN BY: BDH  
CHECKED BY: DMA  
DESIGNED BY: DMA

**CARNAHAN • PROCTOR • CROSS, INC.**  
CONSULTING ENGINEERS • SURVEYORS • PLANNERS  
6101 WEST ATLANTIC BOULEVARD, MARGATE, FLORIDA 33063  
PHONE: 954-972-9959 FAX: 954-972-4178  
3931 RCA BOULEVARD, SUITE 3114, PALM BEACH GARDENS, FLORIDA 33410  
PHONE: 561-799-5515 FAX: 561-799-5643

Website: www.carnahan-proctor.com

**PARK CREEK EXECUTIVE OFFICE**  
SECTIONS AND DETAILS  
SR 7, COCONUT CREEK

D.M. AMBROSE  
FL. REG. NO. 12831  
JUN 08 2005  
SEAL

CERT. OF AUTH. # LB2936  
FILE NO. 040314  
SHEET C5 OF 9

S:\040314\040314\_C\dwg\040314C-101.ENG.dwg, DET, 6/8/2006 11:16:20 AM, KIP6000.pc3, user defined field1